

Rosemount™ 928 Wireless Gas Monitor

Integrated Wireless Gas Monitoring



The Rosemount 928 Wireless Gas Monitor is the first integrated *WirelessHART*® toxic gas monitoring solution with a tool-less hot-swappable sensor from Emerson. The Rosemount 928 extends detection coverage to remote installations, eliminates wiring costs, and reduces installation and commissioning times.

- Hot-swappable electrochemical sensor module with end-of-life diagnostics can be installed in the field without tools.
- Hazardous location, performance, and functional safety approvals for worldwide use.
- Large liquid crystal display clearly shows gas concentration and transmitter diagnostics.
- Optional discrete output for activating field alarms.

Features

WirelessHART® communication

Traditional electrochemical sensor technology is proven and reliable, but conventional products require a wired infrastructure for power and signal communication. The Rosemount 928 requires no wired infrastructure and dramatically reduces installation and maintenance costs.

Hot-swappable power module

The device uses a replaceable, intrinsically safe lithium-thionyl chloride power module.

The power module has over three years of service life⁽¹⁾ and can be easily exchanged in the field in hazardous locations.

High performance monitoring

Table 1: Monitoring Ranges by Gas

Gas	Range	Accuracy	T20	T50	T90	Default alarm	Zero drift	Relative humidity	Operating temperature range
H ₂ S	0-100 ppm	±3 ppm or 10% of reading	< 8 seconds	< 10 seconds	< 45 seconds	10 ppm	< 5% per annum	10-95%	-40 to +122 °F -40 to +50 °C
CO	0-1000 ppm	±6 ppm or 10% of reading	< 7 seconds	< 12 seconds	< 29 seconds	100 ppm	< 5% per annum	10-95%	-22 to +122 °F -30 to +50 °C
O ₂	0-25% by volume	±0.5% oxygen content of supply gas	< 2 seconds	< 4 seconds	< 15 seconds	19.5%	< 5% per annum	5-95%	-22 to +122 °F -30 to +50 °C

Contents

Features.....	2
Ordering information.....	3
Specifications.....	5
Product certifications.....	8
Dimensional drawings.....	14

(1) Power module service life depends on wireless update rate, local display settings, and ambient conditions.

Hot-swappable sensor

The Rosemount 928 uses the Rosemount 628 series of hot-swappable electrochemical gas sensor modules that can be installed in the field with one hand and no tools.

The Rosemount 628 Universal Gas Sensor is a smart sensor. As such, it retains its own calibration information. It must be connected to a Rosemount 928 Transmitter to calibrate, but the calibration settings are stored in the sensor itself rather than in the transmitter. The Rosemount 628 Sensor may be uninstalled from one Rosemount 928 Transmitter and reinstalled in another transmitter without affecting its calibration.

The device automatically recognizes the sensor. Built-in end-of-life diagnostics alert you when sensor replacement is necessary.

Built for harsh environments

The Rosemount 928 is designed to operate in ambient temperatures ranging from -40 °F to +122 °F (-40 °C to +50 °C).

Ingress protection levels of IP66 are achieved with the ingress protection (IP) filter fitted to the Rosemount 628.

Ordering information

Standard options

The starred options (★) represent the most common options and should be selected for best delivery. The non-starred options are subject to additional delivery lead time.

Model	Description	
Product description		
928	Wireless Gas Monitor	★
Transmitter output		
X	Wireless	★
Sensor options		
SS	Sensor specified separately and shipped with the transmitter (requires specification of the Rosemount 628).	★
UT	Universal transmitter (no sensor specified)	★
Discrete output		
00	No discrete output; wireless communication only	★
01	Discrete output and wireless communications	★
Housing material		
2A	Aluminum ½-14 national pipe thread (NPT) conduit	★
2S	Stainless steel ½-14 national pipe thread (NPT) conduit	★
Product certifications		
I5	USA Intrinsically Safe	★
I6	Canada Intrinsically Safe	★
I4	Japan Intrinsic Safety	★
I1	ATEX Intrinsic Safety	★

Model	Description	
I3	China Intrinsic Safety	★
I7	IECEX Intrinsic Safety	★
KQ	USA CSA ATEX Intrinsic Safety	★
NA	No approvals	★

Wireless options

The starred options (★) represent the most common options and should be selected for best delivery. The non-starred options are subject to additional delivery lead time.

Model	Description	
Wireless update range, operating frequency, and protocol		
WA3	User configurable update rate, 2.4 GHz DSSS, IEC 65291 (<i>WirelessHART</i> [®])	★
Omnidirectional wireless antenna and SmartPower™ solutions		
WK1	External antenna, adapter for black power module. (I.S. power module sold separately)	★
WM1	Extended range, external antenna	★
WJ1	Remote antenna, adapter for black power module (I.S. power module sold separately)	★
WN1	High-gain remote antenna, adapter for black power module (I.S. power module sold separately)	★

Other options

The starred options (★) represent the most common options and should be selected for best delivery. The non-starred options are subject to additional delivery lead time.

Model	Description	
Mounting bracket		
B4	Universal L mounting bracket for 2-in. (50.8 mm) pipe mounting, stainless steel bracket, and bolts	★
Configuration		
C1	Factory configuration date, descriptor, message fields, and wireless parameters	★
Quality documentation		
Q1	Certificate of Compliance	★
Typical model number: 928 X SS 00 2A I5 WA3 WK1 B4		

Rosemount 628 Universal Gas Sensor ordering information

The starred options (★) represent the most common options and should be selected for best delivery. The non-starred options are subject to additional delivery lead time.

Model	Description	
Product description		
628	Universal Gas Sensor	★
Sensor technology		
EC	Electrochemical	★
Gas type		
T02	Hydrogen sulfide	★
A03	Oxygen	★
T04	Carbon monoxide	★
Unit of measurement		
2	ppm	★
3	% by volume	★
Sensor range		
F	0-100	★
D	0-25	
K	0-1000	
Typical model number: 628 EC T02 2 F		

Spare parts

Description	Part number
Ingress Protection (IP) filter	00628-9000-0001
Spare B4 mounting bracket for Rosemount 928	03151-9270-0004

Specifications

Functional specifications

Measurement type

Gas concentration levels

- Hydrogen sulfide (H₂S): 0 - 100 ppm
- Carbon monoxide (CO): 0 - 1,000 ppm
- Oxygen depletion (O₂): 0 - 25% by volume

Sensor type

Tool-less hot-swappable electrochemical cell module

Discrete output, models 928XSS01, 928XUT01

Maximum rating: 28 Vdc, 100 mA

On resistance: typical 1 Ohm

Wireless output

IEC 62591 (*WirelessHART*[®]) Compliant, 2.4 GHz

Antenna radio frequency power output

External (WK option) antenna: Maximum of 10 mW (10 dBm) EIRP

Extended range, external (WM option) antenna: Maximum of 18 mW (12.5 dBm) EIRP

High gain, remote (WN option) antenna: Maximum of 40 mW (16 dBm) EIRP

Remote, extended (WJ option) antenna: Maximum of 18 mW (12.5 dBm) EIRP

Local display

The integral LCD display can display alert state and diagnostic information. Configurable to display updates at each wireless update.

Humidity limits

See [Table 1](#).

Maximum inputs for the Rosemount 928 (ordinary and IS environments)

28 Volts

95 milliamps

650 milliwatts

Wireless update rate

User selectable, 1 second to 60 minutes

Diagnostics

End-of-life sensor diagnostics

Physical specifications

Electrical connections wireless power module

Replaceable, intrinsically safe lithium-thionyl chloride power module with PBT polymer enclosure. 5.8 years of life at one minute update rate.⁽²⁾

⁽²⁾ Reference conditions are 70 °F (21 °C) and routing data for three additional network devices.

Materials of construction

Enclosure:

- Housing: low-copper aluminum or stainless steel
- Paint: polyurethane
- Cover O-ring: Buna-N

Terminal block and power module pack: PBT

Antenna: PBT/PC integrated omnidirectional antenna

Conduit entries: ½-14 national pipe thread (NPT)

Environmental

Operating temperature: -40 to +122 °F (-40 to +50 °C)

Ingress protection: IP66 ingress protection (IP) filter

Switch terminals, models 928XSS01, 928UXT01

Screw terminals permanently fixed to terminal block

Field Communicator connections

Communication terminals

Clips permanently fixed to terminal block

Rosemount 928 weight

Low-copper aluminum housing (2A ordering option): 73 ounces (2076 grams)

Stainless steel housing (2S ordering option): 143 ounces (4055 grams)

Enclosure ratings

NEMA® 4X and IP66

Performance specifications

Electromagnetic compatibility (EMC)

All models: meet all relevant requirements of EN-61326-2-3: 2006

Vibration effect

Wireless output unaffected when tested according to the requirements of IEC60770-1 field or pipeline with high vibration level (10-60 Hz 0.2 mm displacement peak amplitude/60-2000 Hz 3g).

Wireless output unaffected when tested according to the requirements of IEC60770-1 field with general application or pipeline with low vibration level (10-60 Hz 0.15 mm displacement peak amplitude/60-500 Hz 2g).

Note

Continuous exposure to ambient temperature limits (less than -40 °F or greater than 122 °F [less than -40 °C or greater than 50 °C]) may reduce specified power module life by less than 20 percent.

Temperature guidelines

Sensor type	Operating limit	Transmitter storage limit	Sensor storage recommendation
H ₂ S	-40 to 122 °F -40 to 50 °C	-40 to 185 °F -40 to 80 °C	34 to 45 °F 1 to 7 °C
O ₂	-22 to 122 °F -30 to 50 °C	-40 to 185 °F -40 to 80 °C	34 to 45 °F 1 to 7 °C
CO	-22 to 122 °F -30 to 50 °C	-40 to 185 °F -40 to 80 °C	34 to 45 °F 1 to 7 °C

Note

The electrochemical cells in sensor modules have a limited shelf life. Store sensor modules in a cool location that is not excessively humid or dry. Storing sensor modules for long periods may shorten their useful service life.

Wireless transmission rate

User selectable from 1 second to 60 minutes.

Accuracy

Refer to [Table 1](#).

Product certifications

Rev 3.3

European Directive information

The most recent revision of the EC Declaration of Conformity can be found at www.Emerson.com/Rosemount under *Documentation*.

Telecommunication compliance

All wireless devices require certification to ensure that they adhere to regulations regarding the use of the RF spectrum. Nearly every country requires this type of product certification. Emerson is working with governmental agencies around the world to supply fully compliant products and remove the risk of violating country directives or laws governing wireless device usage.

FCC and IC

This device complies with Part 15 of the FCC rules. Operation is subject to the following conditions: This device may not cause harmful interference. This device must accept any interference received, including interference that may cause undesired operation. This device must be installed to ensure a minimum antenna separation distance of 7.81 in. (20 cm) from all persons.

Ordinary location certification

As standard, the transmitter has been examined and tested to determine that the design meets basic electrical, mechanical, and fire protection requirements by a nationally recognized testing laboratory (NRTL) as accredited by the Federal Occupational Safety and Health Administration (OSHA).

Installing in North America

The US National Electrical Code® (NEC) and the Canadian Electrical Code (CEC) permit the use of Division-marked equipment in Zones and Zone-marked equipment in Divisions. The markings must be suitable for the area classification, gas, and temperature class. This information is clearly defined in the respective codes.

USA

15 U.S.A. Intrinsically Safe (IS)

Certificate CSA 70138122

Standards FM 3600–2011, FM 3610–2010, UL Standard 50—Eleventh edition, UL 61010–1—3rd edition, ANSI/ISA–60079–0 (12.00.01)–2013, ANSI/ISA–60079–11 (12.02.01)–2014

Markings IS CL I, DIV 1, GP A, B, C, D T4 Ex ia IIC T4 Ga;
 T4 (-40 °C ≤ Ta ≤ +50 °C) when installed according to Rosemount™ drawing 00928-1010;
 Class 1, Zone 0, AEx ia IIC T4 Ga;
 Type 4X

Table 2: Entity Parameters

Input (power) parameters	Output (alarm) parameters
Ui - 28 Vdc	Uo - 28 Vdc
Ii - 93.3 mA	Io - 93.3 mA
Pi - 653 mW	Po - 653 mW
Ci - 5.72 nF	Co - 77 nF
Li - 0	Lo - 2 mH

Table 3: HART® Comm Parameters

Uo - 1.9 Vdc
Io - 32 μA

Special Conditions for Safe Use (X):

1. For use only with the Emerson Model 701PBKFF, the Computation Systems, Inc. MHM-89004, or the Perpetuum Ltd. IPM71008/IPM74001.
2. The surface resistivity of the antenna is greater than 1 GΩ. To avoid electrostatic discharge buildup, it must not be rubbed or cleaned with solvents or dry cloth.
3. Substitution of components may impair Intrinsic Safety.

Canada

I6 Canada Intrinsically Safe (IS)

Certificate CSA 70138122

Standards CAN/CSA C22 No. 0-10, CAN/CSA C22.2 No. 94.2-15, CAN/CSA-60079-0-2015, CAN/CSA-60079-11-2014, CAN/CSA-C22.2 61010-1-2012

Markings IS CL I, DIV 1, GP A, B, C, D T4;
Ex ia IIC T4 Ga;
T4 (-40 °C ≤ Ta ≤ +50 °C) when installed according to Rosemount drawing 00928-1010;
Type 4X

Refer to [Table 2](#).

Special Conditions for Safe Use (X):


- For use only with the Emerson Model 701PBKKF, the Computations Systems, Inc. MHM-89004, or the Perpetuum Ltd. IPM71008/IPM74001.
Pour utilisation uniquement avec Emerson Model 701PBKKF, Computation Systems, Inc MHM-89004, ou Perpetuum Ltd. IPM71008/IPM74001.
- The surface resistivity of the antenna is greater than 1 GΩ. To avoid electrostatic discharge buildup, it must not be rubbed or cleaned with solvents or a dry cloth.
La résistivité de surface du boîtier est supérieure à un gigaohm. Pour éviter l'accumulation de charge électrostatique, ne pas frotter ou nettoyer avec des produits solvants ou un chiffon sec.
- Substitution of components may impair Intrinsic Safety.
La substitution de composants peut compromettre la sécurité intrinsèque.

Europe

I1 ATEX Intrinsically Safe (IS)

Certificate Sira17ATEX2371X

Standards EN 60079-0:2012 + A11:2013, EN 60079-11:2012

Markings  II 1 G
Ex ia IIC T4 Ga;
T4 (-40 °C ≤ Ta ≤ +50 °C)
Type IP66

Refer to [Table 2](#) and [Table 3](#).

Special Conditions for Safe Use (X):

- Under certain extreme circumstances, the non-metallic parts incorporated in the enclosure of this equipment may generate an ignition capable of electrostatic charge. Therefore, the equipment shall not be installed in a location where the external conditions are conducive to the build-up of electrostatic charge on such surfaces. In addition, the equipment shall only be cleaned with a damp cloth.
- The transmitter may contain more than 10 percent aluminum and is considered a potential risk ignition by impact or friction. Care must be taken into account during installation and use to prevent impact or friction.
- The equipment shall be powered by Emerson 701PBKKF. An alternative power source shall be the CSI MHM-89004, as these devices have output parameters that are equal or less onerous than the parameters of the 701PBKKF.
- Only the 375, 475, or AMS Trex Communicators may be used with the Rosemount 928.

International

I7 IECEx Intrinsically Safe (IS)

Certificate	IECEx SIR 17.0091X
Standards	IEC 60079-0:2011, IEC 60079-11:2011
Markings	Ex ia IIC T4 Ga; T4 (-40 °C ≤ Ta ≤ +50 °C) Type IP66

Refer to [Table 2](#) and [Table 3](#).

Special Conditions for Safe Use (X):

1. Under extreme circumstances, the non-metallic parts incorporated in the enclosure of this equipment may generate an ignition-capable level of electrostatic charge. Therefore, the equipment shall not be installed in a location where the external conditions are conducive to the build-up of electrostatic charge on such surfaces. In addition, the equipment shall only be cleaned with a damp cloth.
2. The transmitter may contain more than 10 percent aluminum and is considered a potential risk ignition by impact or friction. Care must be taken into account during installation and use to prevent impact or friction.
3. The equipment shall be powered by Emerson 701PBKFF. An alternative power source shall be the the CSI MHM-89004, as these devices have output parameters that are equal or less onerous than the parameters of the 701PBKFF.
4. Only the 375, 475, or AMS Trex Communicators may be used with the Rosemount 928.

China

I3 NEPSI Intrinsically Safe (IS)

Certificate	GYJ18.1438X
Standards	GB 3836.1-2010, GB 3836.4-2010, GB 3836.20-2010
Markings	Ex ia IIC T4 Ga (Ta= -40 °C to +50 °C)

Special Conditions for Safe Use (X):

See certificate.

Japan

CML Intrinsically Safe (IS)

Certificate	CML 18JPN2345X
Standards	IEC 60079-0:2011, IEC 60079-11:2011
Markings	Ex ia IIC T4 Ga; T4 (-40 °C ≤ Ta ≤ +50 °C)

Special Conditions for Safe Use (X):

See certificate.

Brazil

IM INMETRO Intrinsically Safe

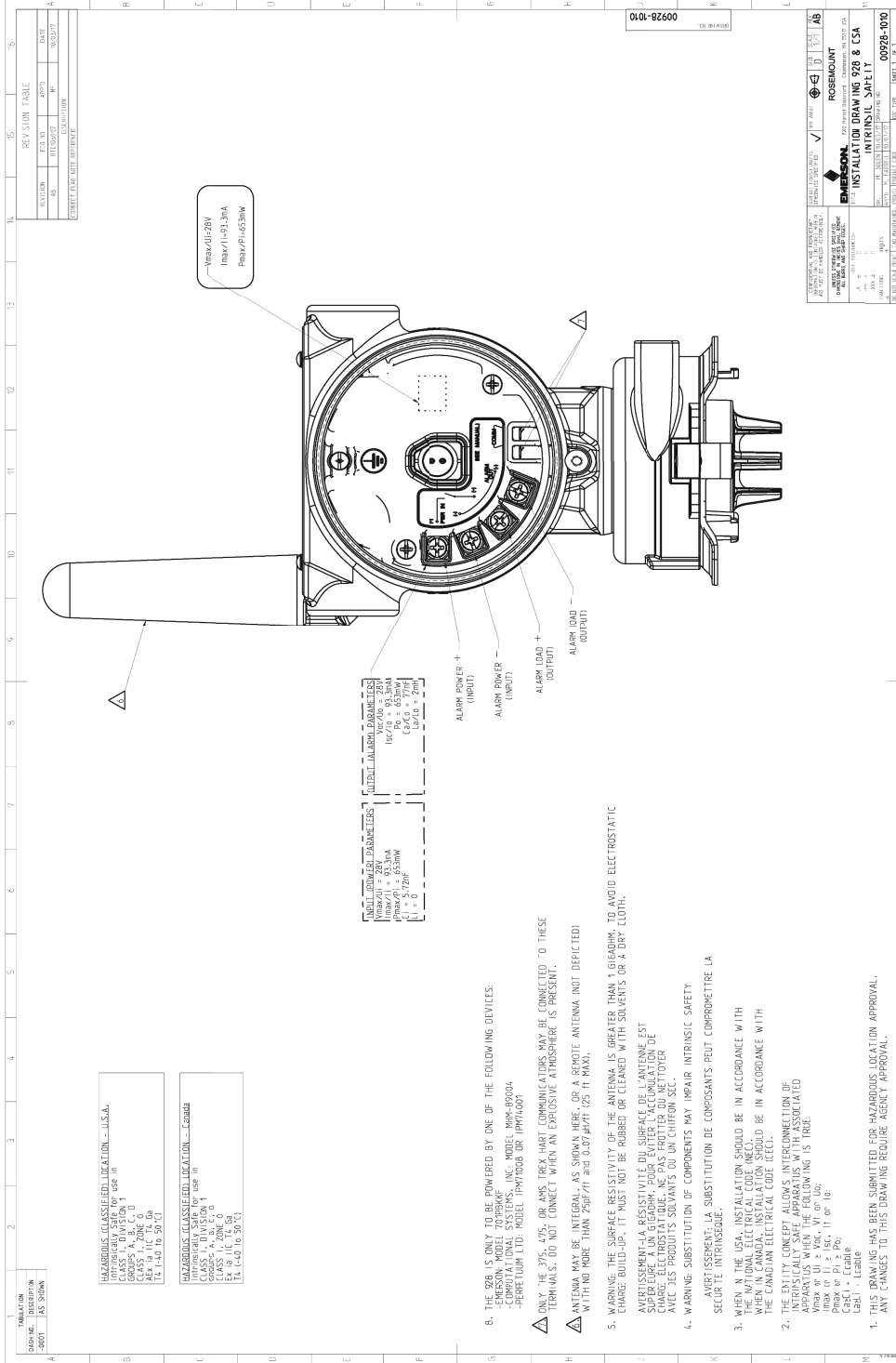
Certificate	UL-BR 19.0096X
Standards	ABNT NBR IEC 60079-0:2013, ABNT NBR IEC 60079-11:2013
Markings	Ex ia IIC T4 Ga; T4 (-40°C ≤ Ta ≤ +50°C)

Special Conditions for Safe Use (X):

See certificate.

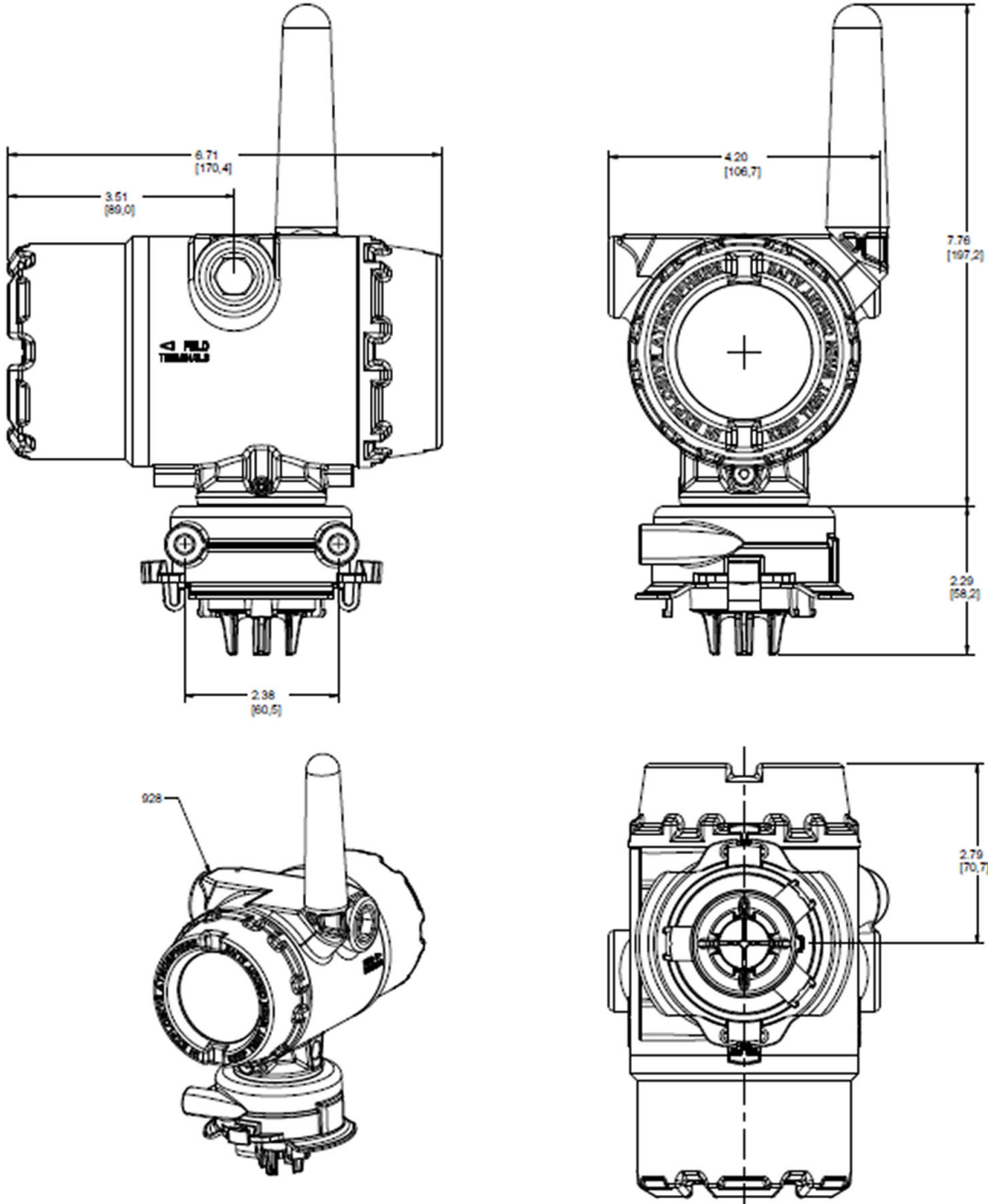
Intrinsically Safe installation drawing

Figure 1: Rosemount 928 Wireless Gas Monitor Intrinsically Safe Installation Drawing



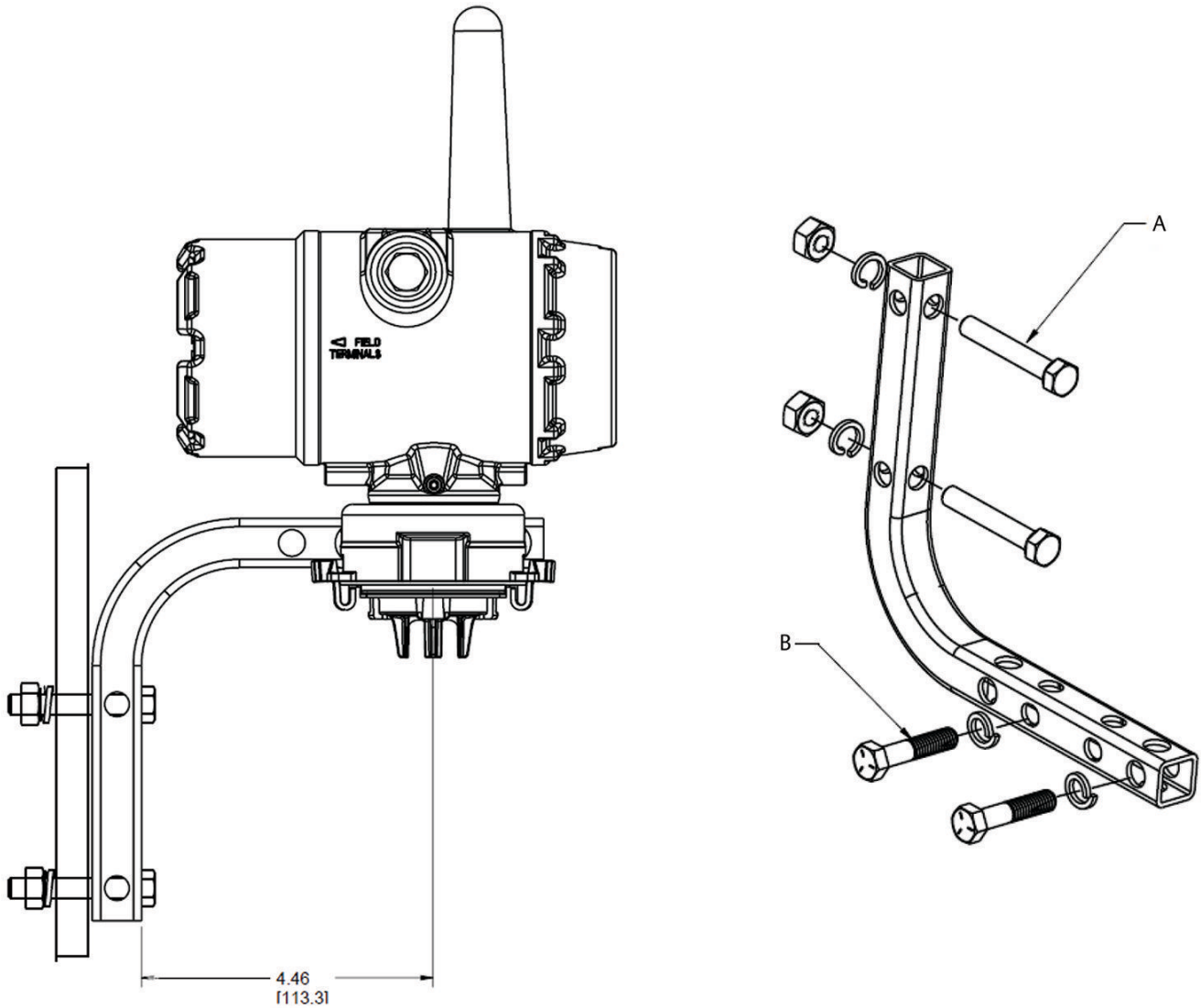
Dimensional drawings

Figure 2: Rosemount 928



Dimensions are in inches [millimeters].

Figure 3: Rosemount 928 Mounting Configurations



Dimensions are in inches [millimeters].

- A. 2-in. bolt for pipe mounting (clamp shown)
- B. 1/4-in. x 1/4-in. bolts for transmitter mounting

GLOBAL HEADQUARTERS

6021 Innovation Blvd.
Shakopee, MN 55379

+1 866 347 3427

+1 952 949 7001

safety.csc@emerson.com

EUROPE

Emerson Automation Solutions
Neuhofstrasse 19a PO Box 1046
CH-6340 Baar
Switzerland

+41 (0) 41 768 6111

+41 (0) 41 768 6300

safety.csc@emerson.com

MIDDLE EAST AND AFRICA

Emerson Automation Solutions
Emerson FZE
Jebel Ali Free Zone
Dubai, United Arab Emirates, P.O. Box 17033

+971 4 811 8100

+971 4 886 5465

safety.csc@emerson.com


ASIA-PACIFIC


Emerson Automation Solutions
1 Pandan Crescent
Singapore 128461
Republic of Singapore

+65 6 777 8211


+65 6 777 0947

safety.csc@emerson.com

 [Linkedin.com/company/Emerson-Automation-Solutions](https://www.linkedin.com/company/Emerson-Automation-Solutions)

 twitter.com/rosemount_news

 [Facebook.com/Rosemount](https://www.facebook.com/Rosemount)

 [youtube.com/RosemountMeasurement](https://www.youtube.com/RosemountMeasurement)

©2019 Emerson. All rights reserved.

The Emerson logo is a trademark and service mark of Emerson Electric Co. Rosemount is a mark of one of the Emerson family of companies. All other marks are the property of their respective owners.