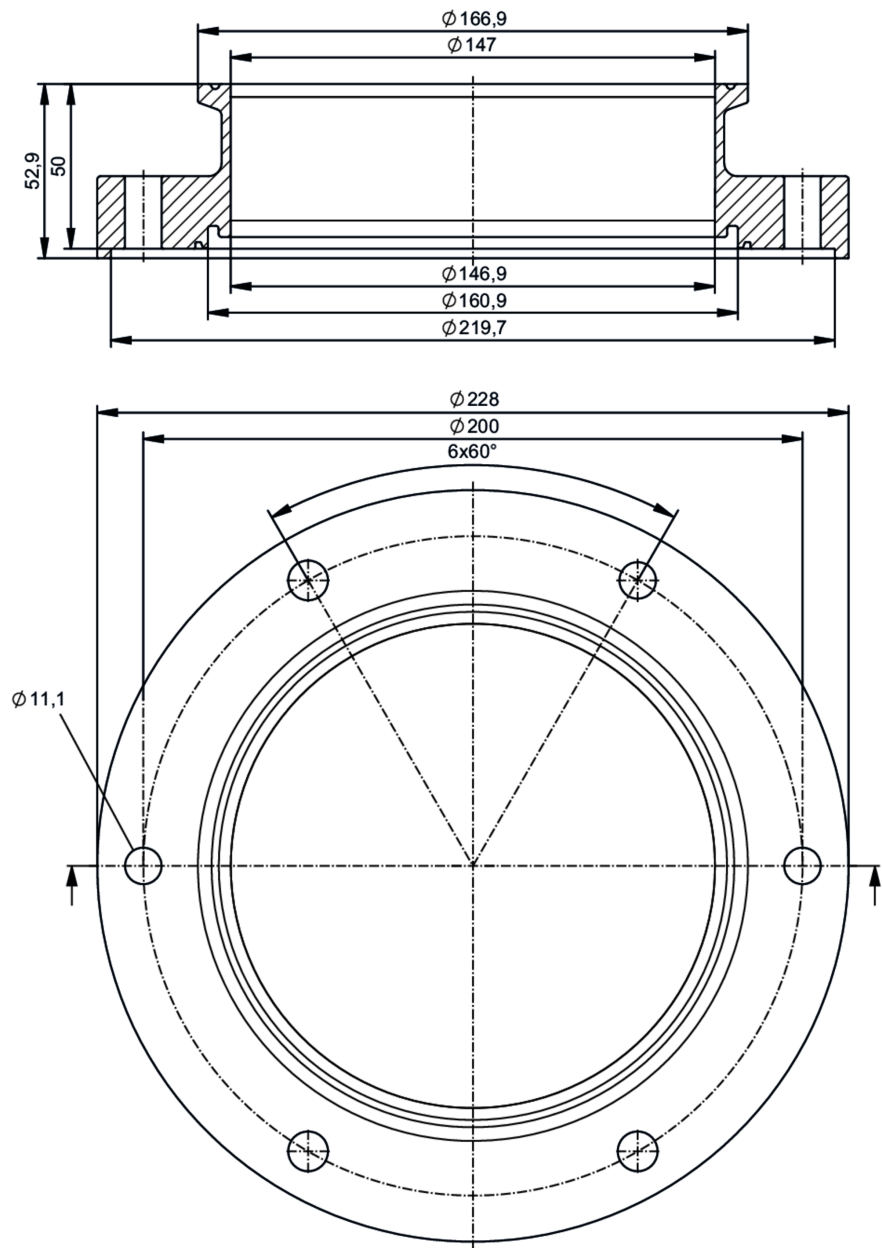




Process adapters clamp DIN 32676 series C (ASME BPE)

ADAPT DIN32676-C DN150



Application		
Design	for volumetric flow meters SMF	
Application	food and beverage industry; hygienic systems	
Pressure rating	10 bar	1 MPa
Tests / approvals		
Pressure Equipment Directive	A possible classification to PED depends on the application and has to be carried out by the user / operator.	
Safety instructions	The compatibility between medium and product material has to be checked in all applications.	

E40618



Process adapters clamp DIN 32676 series C (ASME BPE)

ADAPT DIN32676-C DN150

Mechanical data	
Weight	[g] 10949
Housing	cylindrical
Dimensions	[mm] Ø 228 / L = 52.9
Materials	stainless steel (316L/1.4404)
Nominal diameter	DN150 (6")
Sensor connection	ifm-specific device flange
Process connection	Clamp DIN 32676 series C (ASME BPE)
Process connection suitable for pipe standard	(DIN 11866 series C); (DIN EN 10357 series C)
Surface characteristics Ra/Rz of the wetted parts	Ra < 0.4 µm
Accessories	
Items supplied	screws 12
Remarks	
Pack quantity	2 pcs.