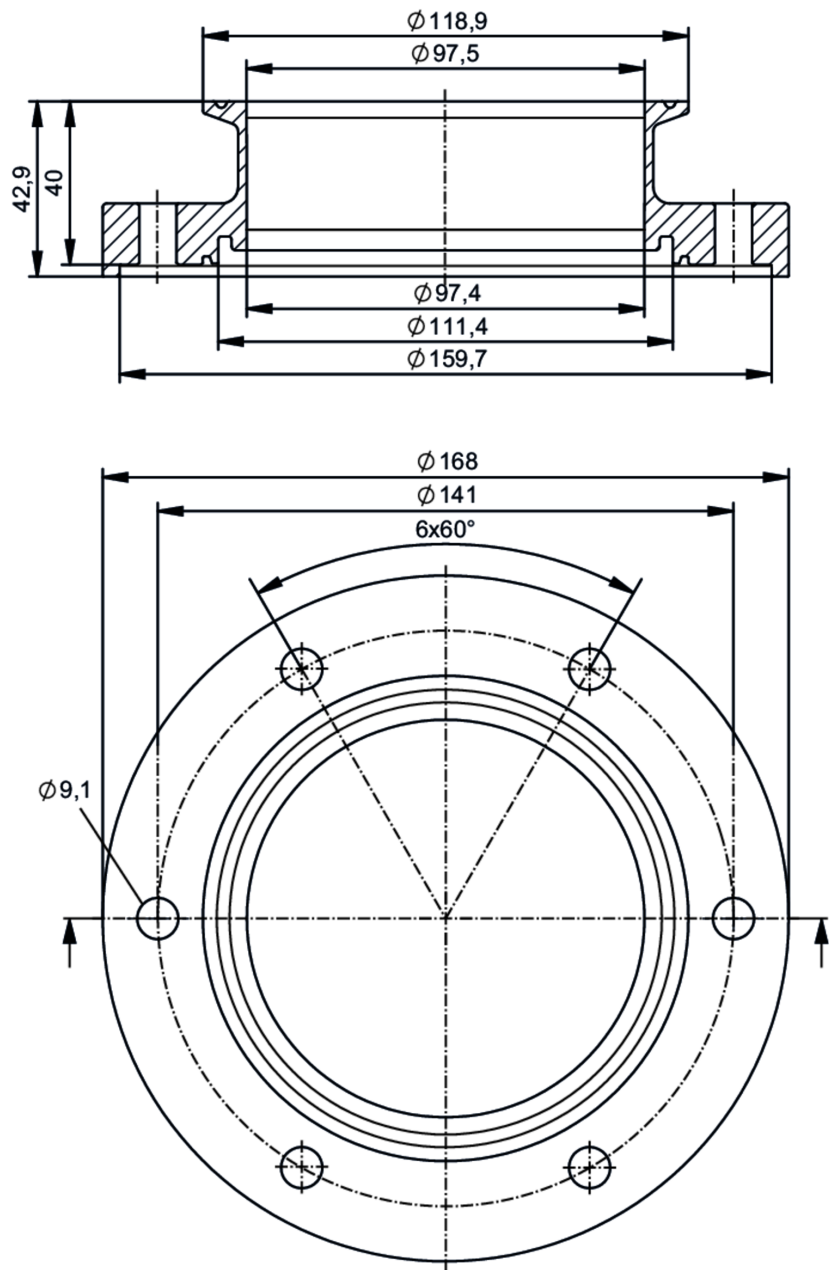




Process adapters clamp DIN 32676 series C (ASME BPE)

ADAPT DIN32676-C DN100



Application		
Design	for volumetric flow meters SMF	
Application	food and beverage industry; hygienic systems	
Pressure rating	10 bar	1 MPa
Tests / approvals		
Pressure Equipment Directive	A possible classification to PED depends on the application and has to be carried out by the user / operator.	
Safety instructions	The compatibility between medium and product material has to be checked in all applications.	

E40616



Process adapters clamp DIN 32676 series C (ASME BPE)

ADAPT DIN32676-C DN100

Mechanical data		
Weight	[g]	4937.8
Housing		cylindrical
Dimensions	[mm]	Ø 168 / L = 42.9
Materials		stainless steel (316L/1.4404)
Nominal diameter		DN100 (4")
Sensor connection		ifm-specific device flange
Process connection		Clamp DIN 32676 series C (ASME BPE)
Process connection suitable for pipe standard		(DIN EN 10357 series C); (DIN EN 10357 series D); (DIN 11866 series C); (BS 4825 Part 1); (ISO 2037)
Surface characteristics Ra/Rz of the wetted parts		Ra < 0.4 µm
Accessories		
Items supplied		screws 12
Remarks		
Pack quantity		2 pcs.