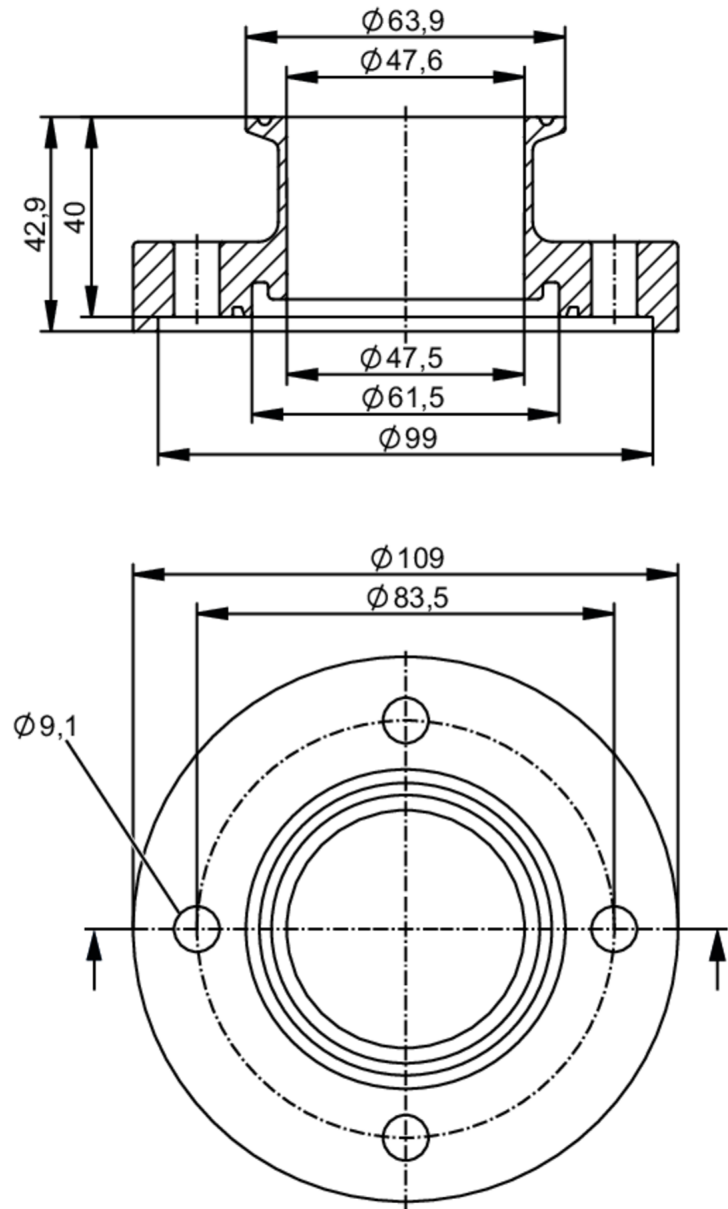




Process adapters clamp DIN 32676 series C (ASME BPE)

ADAPT DIN32676-C DN50



Application		
Design	for volumetric flow meters SMF	
Application	food and beverage industry; hygienic systems	
Pressure rating	16 bar	1.6 MPa
Tests / approvals		
Pressure Equipment Directive	A possible classification to PED depends on the application and has to be carried out by the user / operator.	
Safety instructions	The compatibility between medium and product material has to be checked in all applications.	
Mechanical data		
Weight	[g]	2611.2

E40613



Process adapters clamp DIN 32676 series C (ASME BPE)

ADAPT DIN32676-C DN50

Housing	cylindrical
Dimensions [mm]	Ø 109 / L = 42.9
Materials	stainless steel (316L/1.4404)
Nominal diameter	DN50 (2")
Sensor connection	ifm-specific device flange
Process connection	Clamp DIN 32676 series C (ASME BPE)
Process connection suitable for pipe standard	(DIN EN 10357 series C); (DIN 11866 series C); (BS 4825 Part 1)
Surface characteristics Ra/Rz of the wetted parts	Ra < 0.4 µm
Accessories	
Items supplied	screws 8
Remarks	
Pack quantity	2 pcs.