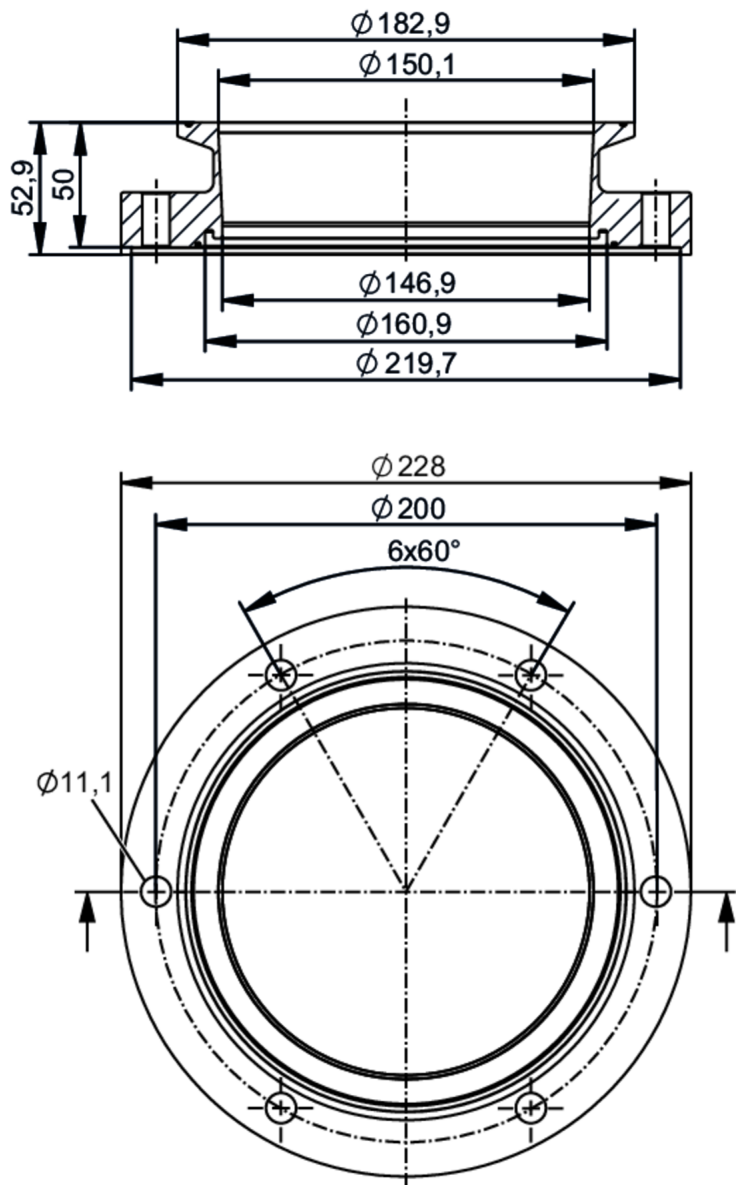




Process adapter clamp DIN 32676 series A

ADAPT DIN32676-A DN150



| Application | | |
|------------------------------|---|------------------|
| Design | for volumetric flow meters SMF | |
| Application | food and beverage industry; hygienic systems | |
| Pressure rating | 10 bar | 1 MPa |
| Tests / approvals | | |
| Pressure Equipment Directive | A possible classification to PED depends on the application and has to be carried out by the user / operator. | |
| Safety instructions | The compatibility between medium and product material has to be checked in all applications. | |
| Mechanical data | | |
| Weight | [g] | 11.42 |
| Housing | cylindrical | |
| Dimensions | [mm] | Ø 228 / L = 52.9 |

E40498



Process adapter clamp DIN 32676 series A

ADAPT DIN32676-A DN150

| | |
|---|---|
| Materials | stainless steel (316L/1.4404) |
| Nominal diameter | DN150 (6") |
| Sensor connection | ifm-specific device flange |
| Process connection | Clamp DIN 32676 series A (ISO) |
| Process connection suitable for pipe standard | (DIN EN 10357 series A); (DIN 11866 series A); (DIN 11850 series 2) |
| Surface characteristics Ra/Rz of the wetted parts | Ra < 0.4 µm |
| Accessories | |
| Items supplied | screws 12 |
| Remarks | |
| Pack quantity | 2 pcs. |