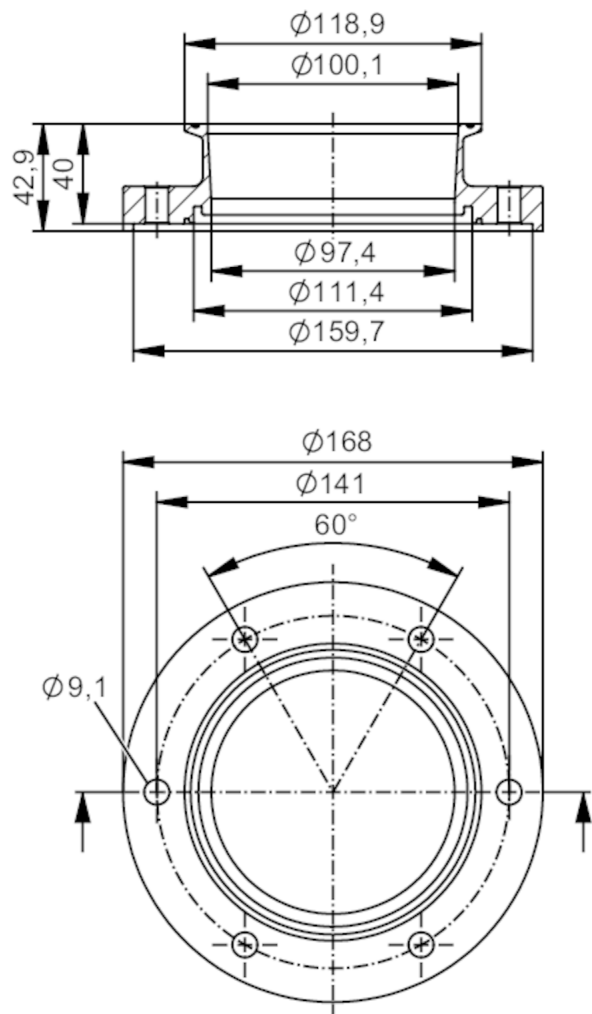




Process adapter clamp DIN 32676 series A

ADAPT DIN32676-A DN100



EC 1935/2004 FCM FDA

Application		
Design	for volumetric flow meters SMF	
Application	food and beverage industry; hygienic systems	
Pressure rating	10 bar	1 MPa
Tests / approvals		
Pressure Equipment Directive	A possible classification to PED depends on the application and has to be carried out by the user / operator.	
Safety instructions	The compatibility between medium and product material has to be checked in all applications.	
Mechanical data		
Weight	[g]	4883.8
Housing	cylindrical	
Dimensions	[mm]	Ø 168 / L = 42.9
Materials	stainless steel (316L/1.4404)	
Nominal diameter	DN100 (4")	
Sensor connection	ifm-specific device flange	



Process adapter clamp DIN 32676 series A

ADAPT DIN32676-A DN100

Process connection	Clamp DIN 32676 series A (ISO)
Process connection suitable for pipe standard	(DIN EN 10357 series A); (DIN 11866 series A); (DIN 11850 series 2)
Surface characteristics Ra/Rz of the wetted parts	Ra < 0.4 µm
Accessories	
Items supplied	screws 12
Remarks	
Pack quantity	2 pcs.