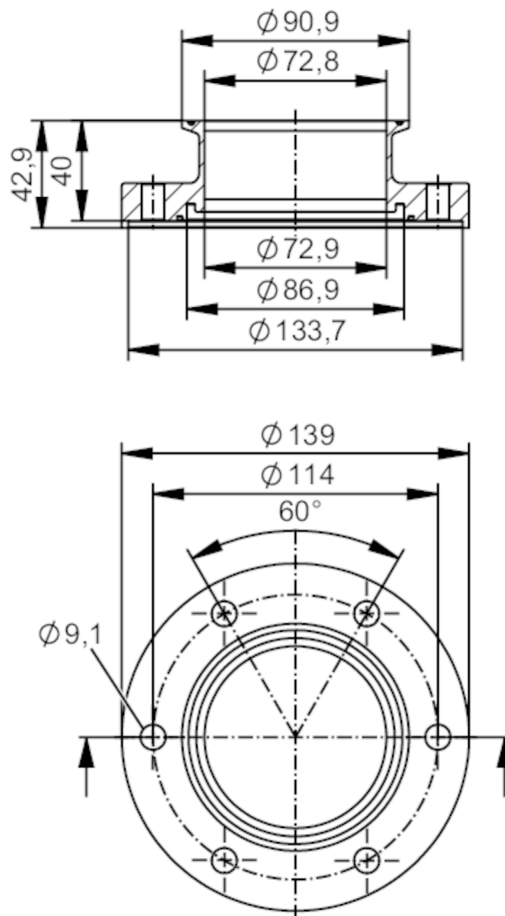




Process adapter clamp ISO 2852

ADAPT ISO2852 DN80



| Application                  |   |                               |
|------------------------------|---|-------------------------------|
| Design                       | for volumetric flow meters SMF  |                               |
| Application                  | food and beverage industry; hygienic systems  |                               |
| Pressure rating              | 10 bar  | 1 MPa                         |
| Tests / approvals            |   |                               |
| Pressure Equipment Directive | A possible classification to PED depends on the application and has to be carried out by the user / operator. |                               |
| Safety instructions          | The compatibility between medium and product material has to be checked in all applications.                  |                               |
| Mechanical data              |   |                               |
| Weight                       | [g]   | 3935                          |
| Housing                      |   | cylindrical                   |
| Dimensions                   | [mm]  | Ø 139 / L = 42.9              |
| Materials                    |   | stainless steel (316L/1.4404) |
| Nominal diameter             |   | DN80 (3")                     |
| Sensor connection            |   | ifm-specific device flange    |
| Process connection           |   | Clamp ISO 2852                |

E40485



Process adapter clamp ISO 2852

ADAPT ISO2852 DN80

|   |  |
|---|--|
| Process connection suitable for pipe standard     | (ISO 2037); (DIN EN 10357 series C); (DIN EN 10357 series D) |
| Surface characteristics Ra/Rz of the wetted parts | Ra < 0.4 µm  |
| Accessories                                       |  |
| Items supplied                                    | screws 12  |
| Remarks   |  |
| Pack quantity                                     | 2 pcs.   |