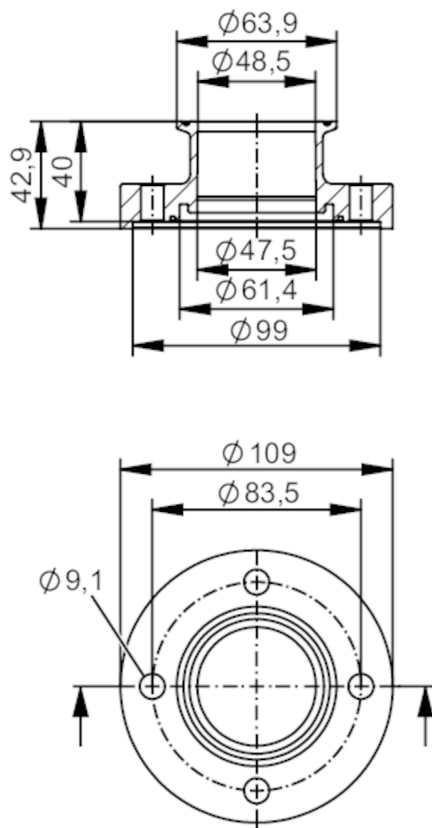




Process adapter clamp ISO 2852

ADAPT ISO2852 DN50



Application		
Design	for volumetric flow meters SMF	
Application	food and beverage industry; hygienic systems	
Pressure rating	16 bar	1.6 MPa
Tests / approvals		
Pressure Equipment Directive	A possible classification to PED depends on the application and has to be carried out by the user / operator.	
Safety instructions	The compatibility between medium and product material has to be checked in all applications.	
Mechanical data		
Weight	[g]	2580.7
Housing		cylindrical
Dimensions	[mm]	Ø 109 / L = 42.9
Materials		stainless steel (316L/1.4404)
Nominal diameter		DN50 (2")
Sensor connection		ifm-specific device flange
Process connection		Clamp ISO 2852
Process connection suitable for pipe standard		(ISO 2037); (DIN EN 10357 Series D)

E40483



Process adapter clamp ISO 2852

ADAPT ISO2852 DN50

Surface characteristics Ra/Rz of the wetted parts	Ra < 0.4 µm
Accessories	
Items supplied	screws 8
Remarks	
Pack quantity	2 pcs.