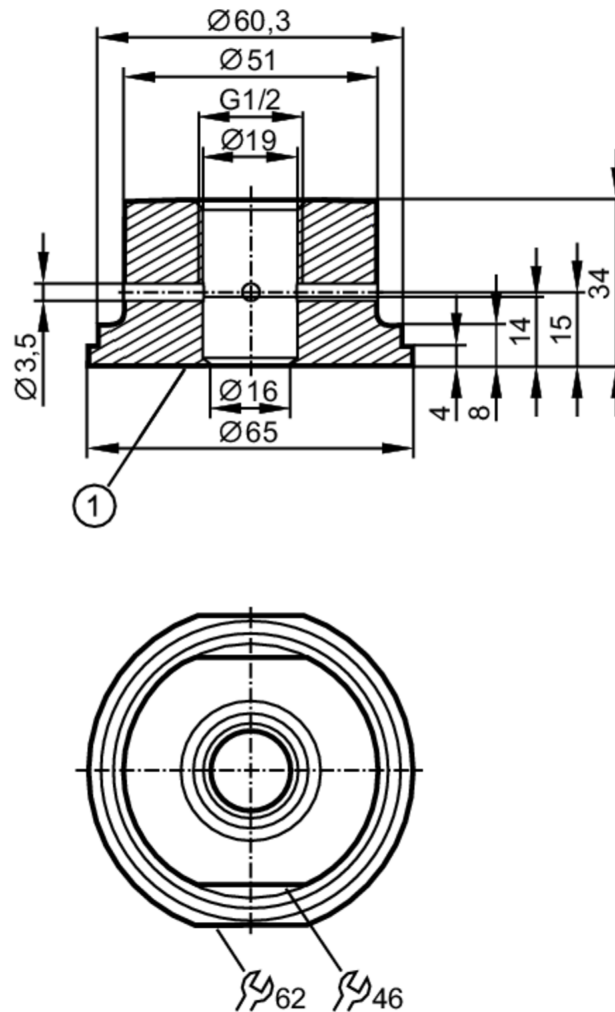




Process adapter for SMS pipe fitting

ADAPT G1/2 - SMS DN50/2"



1 sealing edge



EC 1935/2004 FCM FDA

Application

Design	with leakage port	
Pressure rating	16 bar	1.6 MPa

Tests / approvals

Pressure Equipment Directive	A possible classification to PED depends on the application and has to be carried out by the user / operator.
Safety instructions	The compatibility between medium and product material has to be checked in all applications.

Mechanical data

Weight	[g]	570.5
Materials	process adapter: stainless steel (316L/1.4435) surface characteristics: Ra < 0,4 µm / Rz 4 µm	
Sensor connection	G 1/2 sealing cone	
Process connection	SMS pipe fitting DN50 (2")	
Surface characteristics Ra/Rz of the wetted parts	Ra < 0.8 µm / Rz = 8 µm	

E43344



Process adapter for SMS pipe fitting

ADAPT G1/2 - SMS DN50/2"

Sealing	metal to PEEK
Hygienic equipment class to DIN 11866	H3
Remarks	
Pack quantity	1 pcs.