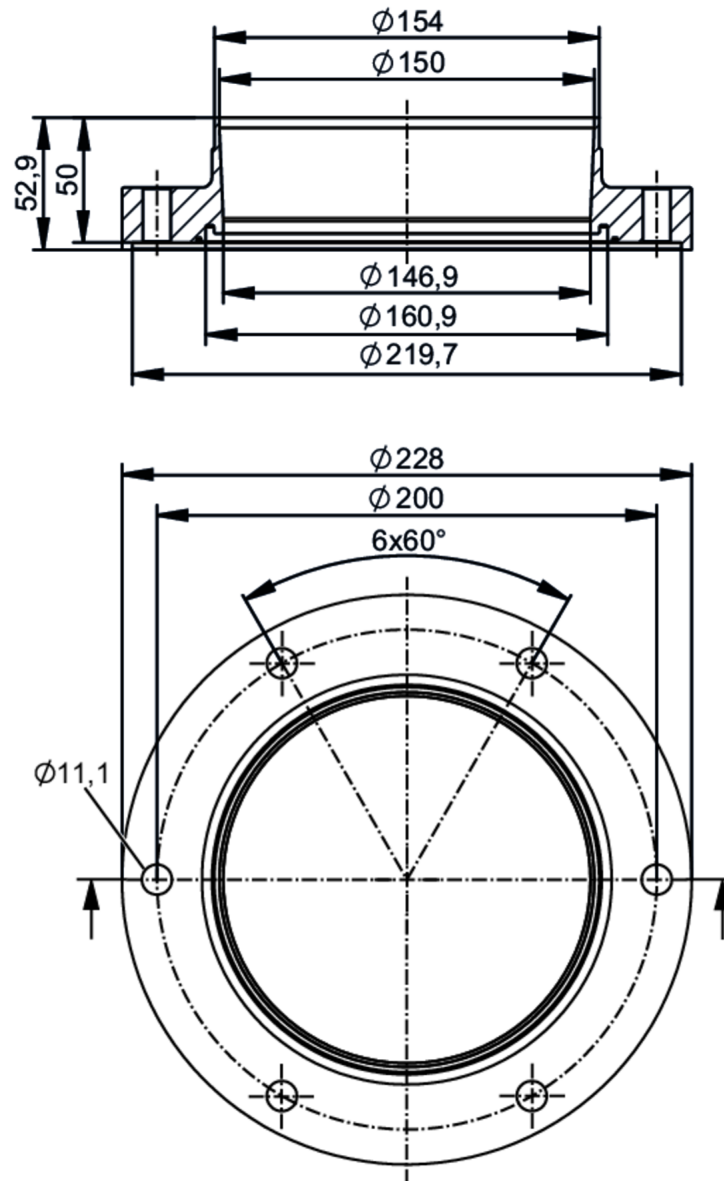


Welding adapters EN10357 series A

ADAPT EN10357 DN150



Application

Design	for volumetric flow meters SMF	
Application	food and beverage industry; hygienic systems	
Pressure rating	16 bar	1.6 MPa

Tests / approvals

Pressure Equipment Directive	A possible classification to PED depends on the application and has to be carried out by the user / operator.	
Safety instructions	The compatibility between medium and product material has to be checked in all applications.	

Mechanical data

Weight	[g]	11450
Housing		cylindrical
Dimensions	[mm]	Ø 228 / L = 52.9
Materials (wetted parts)		stainless steel (316L/1.4404)
Nominal diameter		DN150 (6")

E40478



Welding adapters EN10357 series A

ADAPT EN10357 DN150

Sensor connection	ifm-specific device flange
Process connection	welding adapter EN10357 series A (DIN)
Process connection suitable for pipe standard	(DIN EN 10357 series A); (DIN 11866 series A); (DIN 11850 series 2)
Surface characteristics Ra/Rz of the wetted parts	Ra < 0.4 µm
Accessories	
Items supplied	screws 12
Remarks	
Pack quantity	2 pcs.