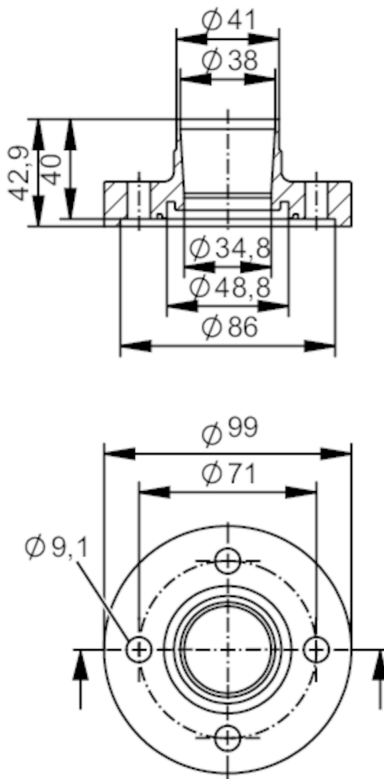




Welding adapters EN10357 series A

ADAPT EN10357 DN40



Application		
Design	for volumetric flow meters SMF	
Application	food and beverage industry; hygienic systems	
Pressure rating	40 bar	4 MPa
Tests / approvals		
Pressure Equipment Directive	A possible classification to PED depends on the application and has to be carried out by the user / operator.	
Safety instructions	The compatibility between medium and product material has to be checked in all applications.	
Mechanical data		
Weight	[g]	2387.6
Materials (wetted parts)	stainless steel (316L/1.4404)	
Nominal diameter	DN40 (1 1/2")	
Sensor connection	ifm-specific device flange	
Process connection	welding adapter EN10357 series A (DIN)	
Process connection suitable for pipe standard	(DIN EN 10357 series A); (DIN 11866 series A); (DIN 11850 series 1); (DIN 11850 series 2)	
Surface characteristics Ra/Rz of the wetted parts	Ra < 0.4 µm	
Accessories		
Items supplied	screws 8	

E40472



Welding adapters EN10357 series A

ADAPT EN10357 DN40

Remarks	
Pack quantity	2 pcs.