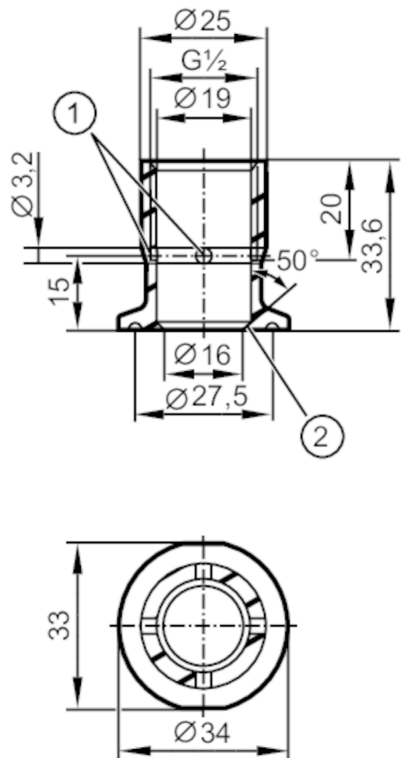




Process adapter Tri-Clamp

ADAPT G1/2-DN20 DIN32676-A



- 1 Leakage port
- 2 sealing edge



EC 1935/2004 EHEDG Certified FCM FDA

Application		
Design	with leakage port	
Pressure rating	25 bar	2.5 MPa
Note on pressure rating	for the connection sensor - adapter	
Tests / approvals		
Pressure Equipment Directive	A possible classification to PED depends on the application and has to be carried out by the user / operator.	
Safety instructions	The compatibility between medium and product material has to be checked in all applications.	
Mechanical data		
Weight	[g]	117.6
Dimensions	[mm]	Ø 34
Materials	process adapter: stainless steel (316L/1.4435) surface characteristics: Ra < 0,4 µm / Rz 4 µm	
Sensor connection	G 1/2 sealing cone	
Process connection	Clamp DN20 DIN 32676 (ISO 2852)	
Surface characteristics Ra/Rz of the wetted parts	Ra < 0.4 µm / Rz = 4 µm	
Remarks		
Pack quantity	1 pcs.	