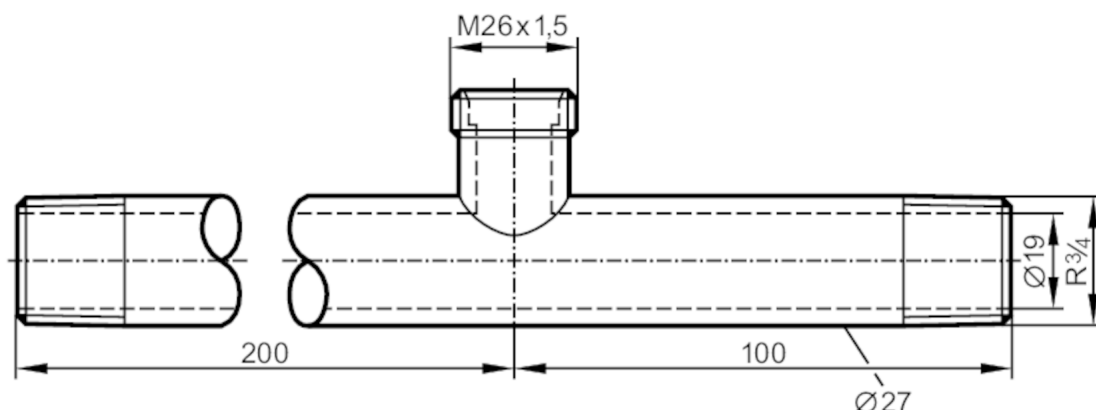




## T-piece

T-PIECE R3/4-M26X1.5-R3/4



## Application

|                 |  |        |
|-----------------|--|--------|
| Design          | for sensors and adapters with process connection M26x1,5 |        |
| Flow range      | [l/min]  | 0...20 |
| Application     | for industrial applications                              |        |
| Media           | liquids and gases  |        |
| Pressure rating | 30 bar   | 3 MPa  |

## Tests / approvals

|                              |   |  |
|------------------------------|---|--|
| Pressure Equipment Directive | A possible classification to PED depends on the application and has to be carried out by the user / operator. |  |
| Safety instructions          | The compatibility between medium and product material has to be checked in all applications.                  |  |

## Mechanical data

|                          |   |       |
|--------------------------|---|-------|
| Weight                   | [g]                                     | 757.5 |
| Materials (wetted parts) | housing: stainless steel (316Ti/1.4571) |       |
| Sensor connection        | M26 x 1,5                               |       |
| Process connection       | threaded connection R 3/4               |       |

## Accessories

|                        |   |
|------------------------|---|
| Accessories (optional) | Adapter: 1 x M18 x 1,5, for direct connection of flow sensors, E40104 |
|------------------------|---|

## Remarks

|               |        |
|---------------|--------|
| Pack quantity | 1 pcs. |
|---------------|--------|