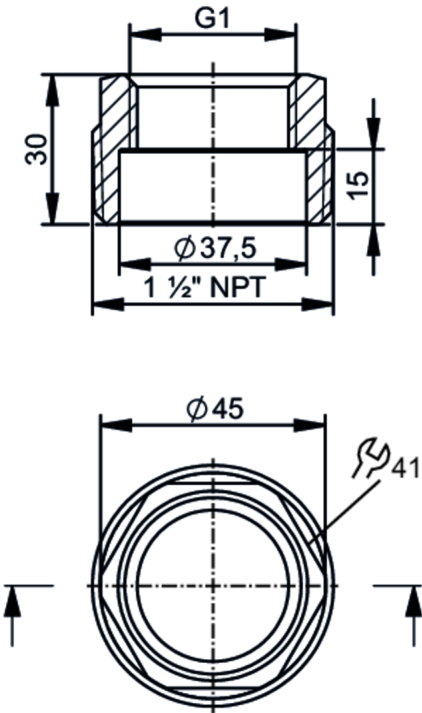




Screw-in adapter for process sensors

ADAPT G1 - 1 1/2 NPT



CRN

Application		
Design	for sensor LW2120	
Pressure rating	50 bar	5 MPa
Note on pressure rating	for the connection sensor - adapter	
MAWP for applications according to CRN	50 bar	5 MPa
Tests / approvals		
Pressure Equipment Directive	A possible classification to PED depends on the application and has to be carried out by the user / operator.	
Safety instructions	The compatibility between medium and product material has to be checked in all applications.	
Mechanical data		
Weight	[g]	194.5
Materials (wetted parts)	stainless steel (316L/1.4404)	
Sensor connection	G 1	
Process connection	threaded connection 1 1/2" NPT	
Remarks		
Pack quantity	1 pcs.	