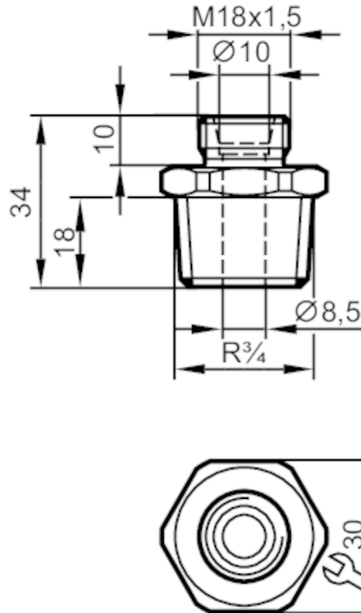


Screw-in adapter for process sensors

ADAPT SI3/4R



Application		
Application	for industrial applications	
Media	liquids and gases	
Pressure rating	100 bar	10 MPa
Tests / approvals		
Pressure Equipment Directive	A possible classification to PED depends on the application and has to be carried out by the user / operator.	
Safety instructions	The compatibility between medium and product material has to be checked in all applications.	
Mechanical data		
Weight	[g]	114.25
Materials	stainless steel (316L/1.4404)	
Sensor connection	M18 x 1,5 internal thread	
Process connection	threaded connection R 3/4 external thread	
Insertion depth	[mm]	16.5; (measuring probe SID, SFD, TN)
Accessories		
Items supplied	sealings: 1, AFM	
Remarks		
Remarks	In applications >30 bar use a suitable high-pressure adapter.	
Pack quantity	1 pcs.	