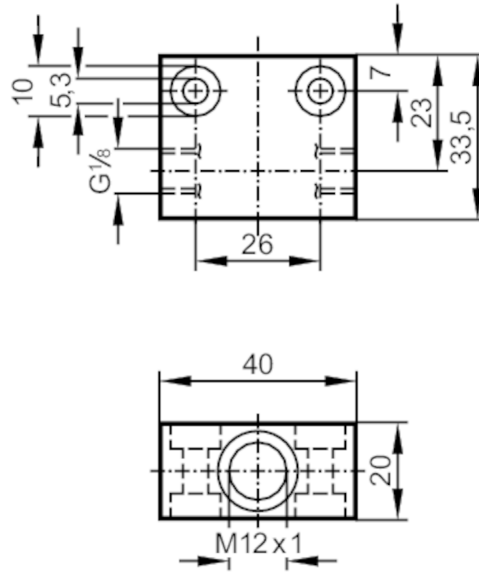


Process adapter for small volumetric flow quantities

FLOW ADAPT SI



Application		
Design	for flow sensors and flow monitors	
Application	for industrial applications	
Installation	via internal G1/8A male thread, any mounting position	
Media	liquids and gases	
Medium temperature [°C]	0...80; (Temperature gradient: 1 K/min)	
Pressure rating	300 bar	30 MPa
Measuring/setting range		
Flow range [ml/min]	2...100	
Tests / approvals		
Pressure Equipment Directive	A possible classification to PED depends on the application and has to be carried out by the user / operator.	
Safety instructions	The compatibility between medium and product material has to be checked in all applications.	
Mechanical data		
Weight [g]	156.5	
Dimensions [mm]	M12 x 1	
Thread designation	M12 x 1	
Materials	stainless steel (316L/1.4404)	
Sensor connection	M12 x 1	
Process connection	G 1/8	
Accessories		
Items supplied	sealings: 1, U-seal	
Accessories (optional)	Adapter: ≤ 30 bar, E40101	
	Adapter: ≤ 300 bar, E40236	
Remarks		
Remarks	Can only be used in combination with the flow sensor's relative operating mode.	
Pack quantity	1 pcs.	