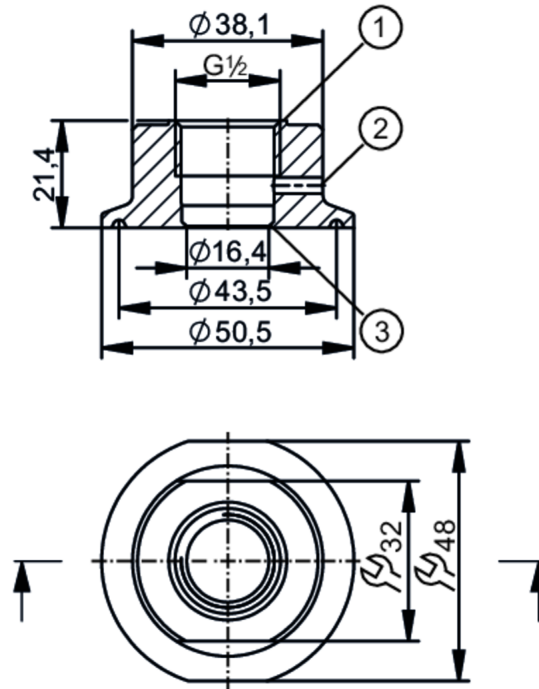


Screw-in adapter for process sensors

ADAPT G1/2-CLAMP DIN32676/DN1,5



- 1: sealing area
2: Leakage port
3: sealing edge

Application

Design	with leakage port	
Pressure rating	150 bar	15 MPa
Note on pressure rating	take into account the pressure resistance of the bracket and the seal used for clamp connection	

Tests / approvals

Pressure Equipment Directive	A possible classification to PED depends on the application and has to be carried out by the user / operator.	
Safety instructions	The compatibility between medium and product material has to be checked in all applications.	

Mechanical data

Weight	[g]	199
Materials	stainless steel (316L/1.4435)	
Sensor connection	G 1/2	
Process connection	Clamp DN25...DN40 (1...1,5") DIN 32676 (ISO 2852)	

Remarks

Pack quantity	1 pcs.
---------------	--------