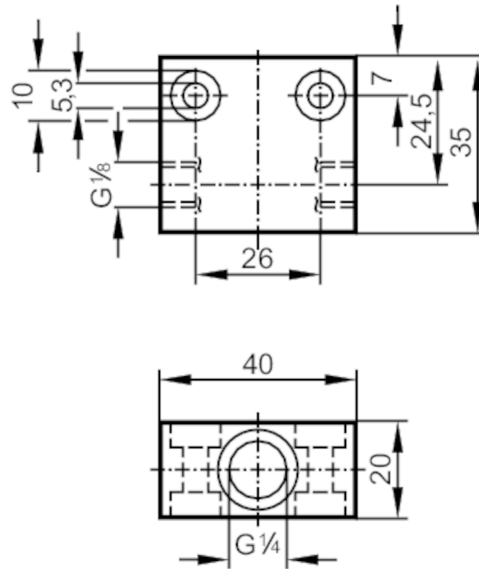


**Process adapter for small volumetric flow quantities**

FLOW ADAPT SF PTFE


**Application**

Design	for flow sensors with ceramic probe G 1/4	
Installation	via internal G1/8A male thread, any mounting position	
Medium temperature [°C]	0...80	
Pressure rating	30 bar	3 MPa

**Measuring/setting range**

Flow range [ml/min]	2...50
---------------------	--------

**Tests / approvals**

Pressure Equipment Directive	A possible classification to PED depends on the application and has to be carried out by the user / operator.
Safety instructions	The compatibility between medium and product material has to be checked in all applications.

**Mechanical data**

Weight [g]	48
Materials	PTFE
Sensor connection	G 1/4
Process connection	G 1/8

**Accessories**

Accessory required	Adapter: 1 x G1/4 BSPP, in combination with a flow sensor from the SI series, E40176
--------------------	--

**Remarks**

Remarks	Can only be used in combination with the flow sensor's relative operating mode.
Pack quantity	1 pcs.