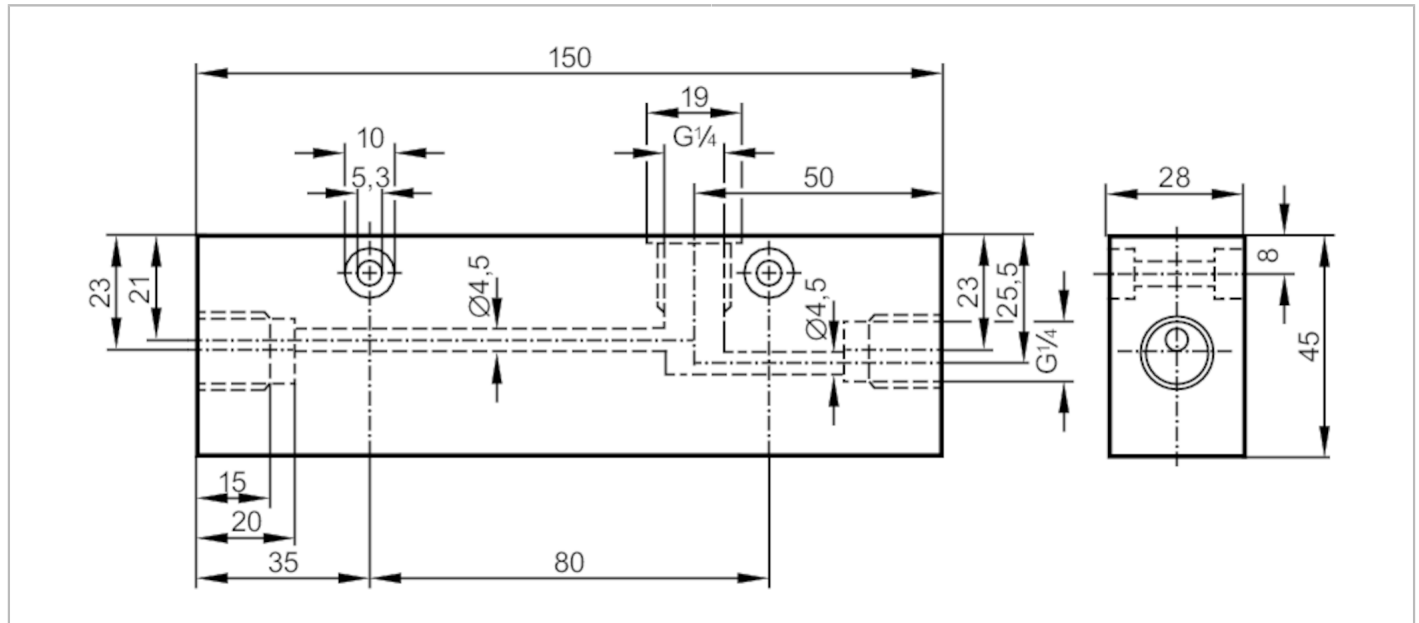


E40187



Process adapter for small volumetric flow quantities

ADAPTBLOCK D4,5 G1/4 PVC



Application		
Design	for flow sensors SID, SF5	
Flow range	[l/min]	0...0.5; ((SI1xxx); 0...1.0 (SI5xxx); factory setting with water)
Application	for industrial applications	
Media	liquids and gases	
Medium temperature	[°C]	-25...60
Pressure rating	6 bar	0.6 MPa
Mechanical data		
Weight	[g]	420
Materials	PVC	
Sensor connection	M18 x 1,5	
Process connection	G 1/4	
Accessories		
Items supplied	Adapter: 1 x G1/4 BSPP, E40099	
	sealings: 1, U-seal	
Remarks		
Remarks	Can only be used in combination with the flow sensor's relative operating mode.	
Pack quantity	1 pcs.	