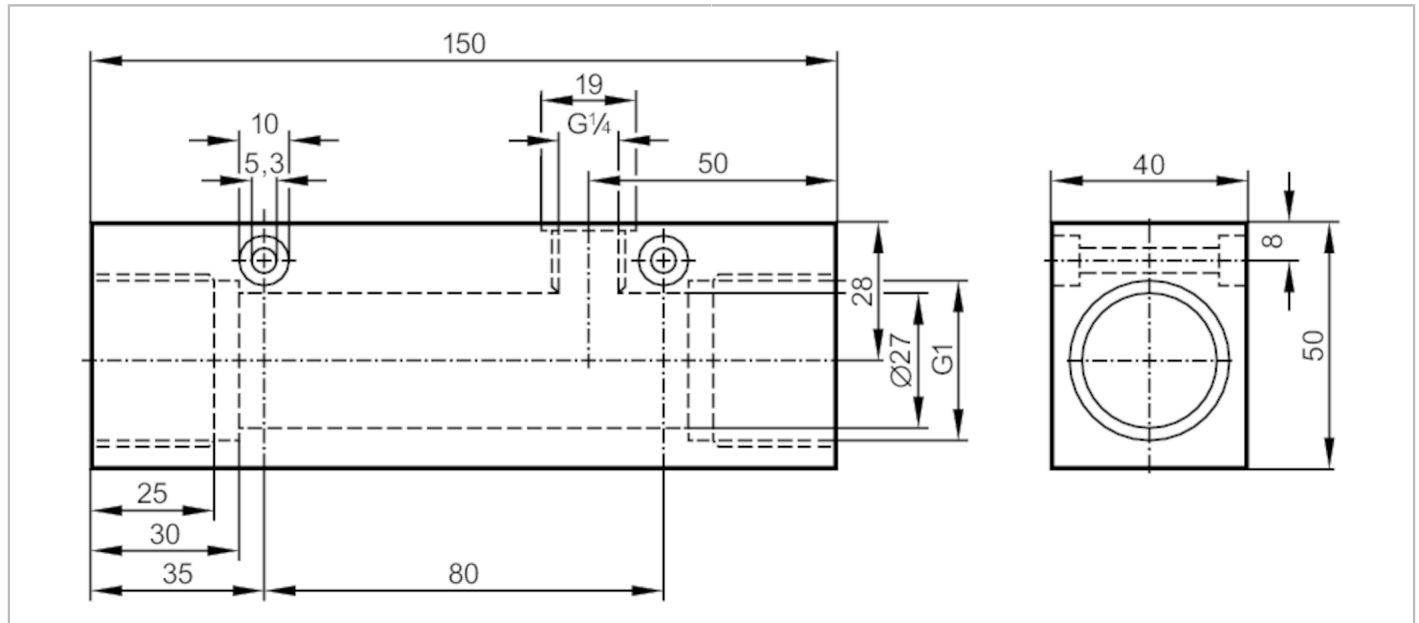


E40164



Process adapter for small volumetric flow quantities

ADAPTBLOCK D27 G1



Application		
Design		for flow sensors SID, SF5
Flow range	[l/min]	2...20; ((SI1xxx); 2...25 (SI5xxx); factory setting with water)
Application		for industrial applications
Media		liquids and gases
Pressure rating	300 bar	30 MPa
Mechanical data		
Weight	[g]	1512.5
Materials		stainless steel (316L/1.4404)
Sensor connection		M18 x 1,5
Process connection		G 1
Accessories		
Items supplied		Adapter: 1 x G1/4 BSPP, E40099
		sealings: 1, U-seal
Remarks		
Remarks		Can only be used in combination with the flow sensor's relative operating mode.
Pack quantity		1 pcs.