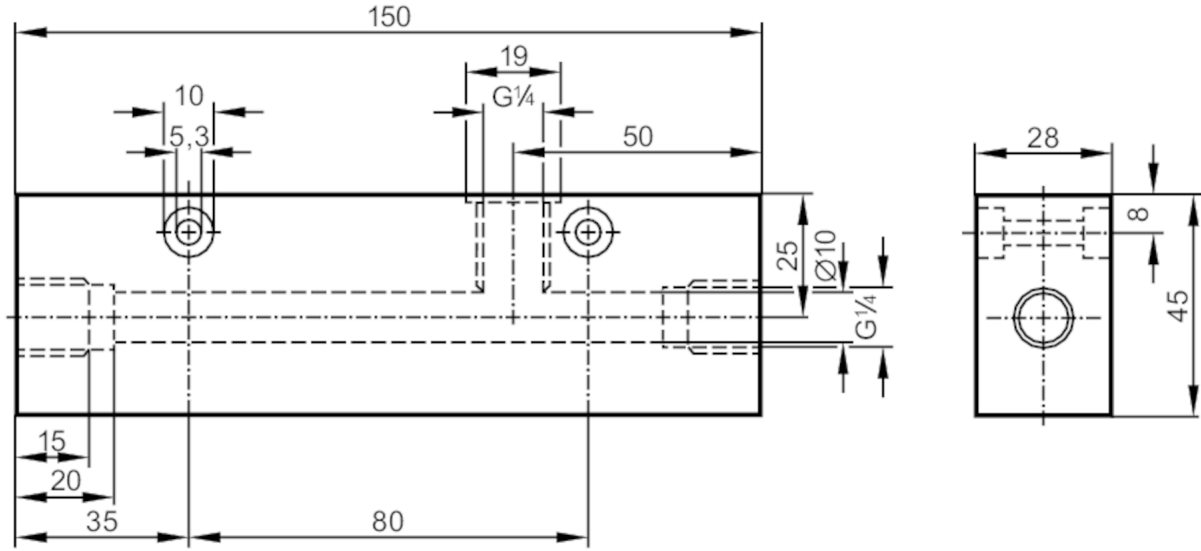


E40161



Process adapter for small volumetric flow quantities

ADAPTBLOCK D10 G1/4



Application

| | | |
|-----------------|-----------------------------|---|
| Design | for flow sensors SID, SF5 | |
| Flow range | [l/min] | 0.2...2; ((SI1xxx); 0.2...3 (SI5xxx); factory setting with water) |
| Application | for industrial applications | |
| Media | liquids and gases | |
| Pressure rating | 300 bar | 30 MPa |

Tests / approvals

| | |
|------------------------------|---|
| Pressure Equipment Directive | A possible classification to PED depends on the application and has to be carried out by the user / operator. |
| Safety instructions | The compatibility between medium and product material has to be checked in all applications. |

Mechanical data

| | | |
|--------------------|-----|-------------------------------|
| Weight | [g] | 1514 |
| Materials | | stainless steel (316L/1.4404) |
| Sensor connection | | M18 x 1,5 |
| Process connection | | G 1/4 |

Accessories

| | |
|----------------|--------------------------------|
| Items supplied | Adapter: 1 x G1/4 BSPP, E40099 |
| | sealings: 1, U-seal |

Remarks

| | |
|---------------|---|
| Remarks | Can only be used in combination with the flow sensor's relative operating mode. |
| Pack quantity | 1 pcs. |