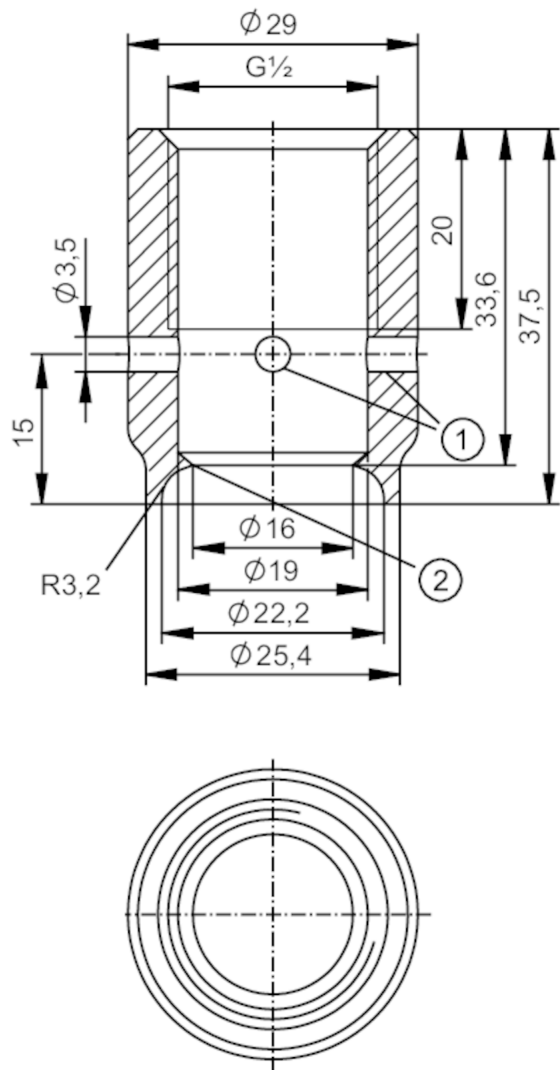




Welding adapter for process sensors

ADAPT G1/2-WELD FOR PIPE 3A



- 1 Leakage port (4x)
- 2 sealing edge



Application		
Design	for pipes, with leakage port	
Pressure rating	50 bar	5 MPa
Note on pressure rating	for the connection sensor - adapter	
Tests / approvals		
Pressure Equipment Directive	A possible classification to PED depends on the application and has to be carried out by the user / operator.	
Safety instructions	The compatibility between medium and product material has to be checked in all applications.	
Mechanical data		
Weight	[g]	168.7
Materials (wetted parts)	welding adapter: stainless steel (316L/1.4435) surface characteristics: Ra < 0,4 µm / Rz 4 µm	
Sensor connection	G 1/2 sealing cone	

E43412



Welding adapter for process sensors

ADAPT G1/2-WELD FOR PIPE 3A

Process connection	welding adapter 1" (25,4 x 1,65); Maße gemäß DIN 11866; Reihe C ASME-BPE
Surface characteristics Ra/Rz of the wetted parts	Ra < 0.4 µm / Rz = 4 µm
Remarks	
Pack quantity	1 pcs.