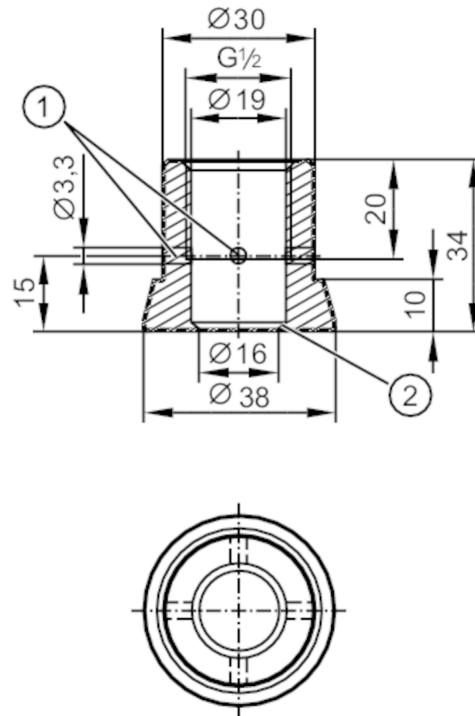


Welding adapter for process sensors

ADAPT G1/2-WELD D38 3A



- 1 Leakage port
2 sealing edge



CRN EC 1935/2004 EHEDG Certified FCM FDA

Application

Design	with leakage port
Pressure rating	50 bar 5 MPa
Note on pressure rating	for the connection sensor - adapter
MAWP for applications according to CRN [bar]	50

Tests / approvals

Pressure Equipment Directive	A possible classification to PED depends on the application and has to be carried out by the user / operator.
Safety instructions	The compatibility between medium and product material has to be checked in all applications.

Mechanical data

Weight [g]	205.5
Materials (wetted parts)	welding adapter: stainless steel (316L/1.4435) surface characteristics: Ra < 0,4 µm / Rz 4 µm
Sensor connection	G 1/2 sealing cone
Process connection	welding adapter Ø 38 mm
Surface characteristics Ra/Rz of the wetted parts	Ra < 0.4 µm / Rz = 4 µm

Remarks

Pack quantity	1 pcs.
---------------	--------