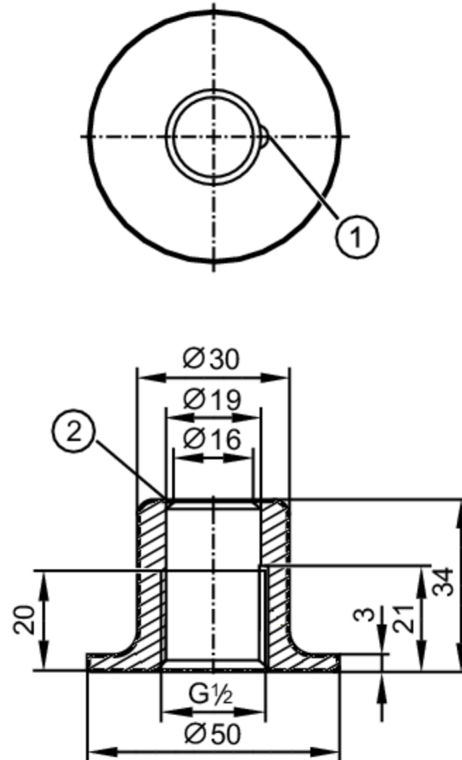


## Welding adapter for process sensors

ADAPT G1/2 WELDING POT



- 1 Leakage port  
2 sealing edge



EC 1935/2004 EHEDG Certified FCM FDA

## Application

Design	long design for deeper installation	
Pressure rating	50 bar	5 MPa
Note on pressure rating	for the connection sensor - adapter	

## Tests / approvals

Pressure Equipment Directive	A possible classification to PED depends on the application and has to be carried out by the user / operator.
Safety instructions	The compatibility between medium and product material has to be checked in all applications.

## Mechanical data

Weight	[g]	200
Materials (wetted parts)	welding adapter: stainless steel (316L/1.4435) surface characteristics: Ra < 0,4 µm / Rz 4 µm	
Sensor connection	G 1/2 sealing cone	
Process connection	welding adapter Ø 50 mm	
Surface characteristics Ra/Rz of the wetted parts	Ra < 0.4 µm / Rz = 4 µm	

## Remarks

Pack quantity	1 pcs.
---------------	--------