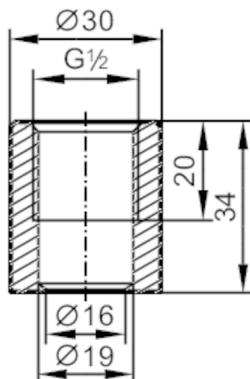


E43300



Welding adapter for process sensors

ADAPT G1/2-WELDING SLEEVE



Application

Design	for tanks	
Pressure rating	50 bar	5 MPa
Note on pressure rating	for the connection sensor - adapter	
MAWP for applications according to CRN [bar]	75	

Tests / approvals

Pressure Equipment Directive	A possible classification to PED depends on the application and has to be carried out by the user / operator.
Safety instructions	The compatibility between medium and product material has to be checked in all applications.

Mechanical data

Weight [g]	0.108
Materials (wetted parts)	stainless steel (316L/1.4435)
Sensor connection	G 1/2 sealing cone
Process connection	welding adapter Ø 30 mm
Surface characteristics Ra/Rz of the wetted parts	Ra < 0.4 µm / Rz = 4 µm

Remarks

Pack quantity	1 pcs.
---------------	--------