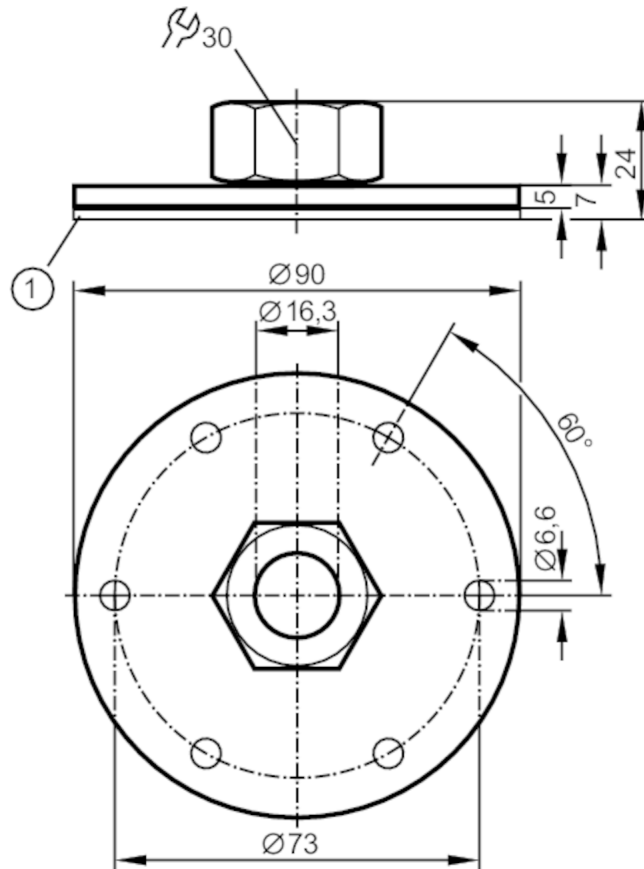


Flange plate for level sensors

FLANGE PLATE 73-90 D16



1 sealings

Application

Design	for capacitive level sensors LK, LI, LT, LL	
Installation	according to DIN 24557	
Pressure rating	0.5 bar	0.05 MPa

Operating conditions

Ambient temperature	[°C]	0...80
---------------------	------	--------

Mechanical data

Weight	[g]	183
Type of mounting	according to DIN 24557	
Materials	aluminium anodised; Lock nut: stainless steel; spacer: brass; clamping ring: FKM; Sealing: NBR	
Tightening torque	[Nm]	6...9
Sensor connection	clamp adapter Ø 16 mm	
Process connection	flange	

Remarks

Pack quantity	1 pcs.
---------------	--------