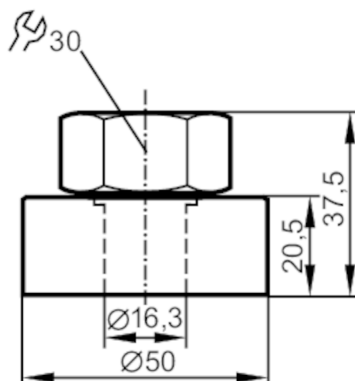




## Welding adapter for level sensors

WELDING ADAPTER 50/D16



### Application

Design	for capacitive level sensors LK, LI, LT, LL	
Installation	Clamp fitting	
Pressure rating	0.5 bar	0.05 MPa

### Operating conditions

Ambient temperature	[°C]	0...80
---------------------	------	--------

### Tests / approvals

Pressure Equipment Directive	A possible classification to PED depends on the application and has to be carried out by the user / operator.	
Safety instructions	The compatibility between medium and product material has to be checked in all applications.	

### Mechanical data

Weight	[g]	394.5
Dimensions	[mm]	Ø 50 / L = 37.5
Materials	flange: stainless steel; Lock nut: stainless steel; spacer: brass; clamping ring: FKM	
Tightening torque	[Nm]	6...9
Sensor connection	Ø 16 mm	
Process connection	welding adapter Ø 50 mm	

### Remarks

Pack quantity	1 pcs.
---------------	--------