



NON-CONTACT TEMPERATURE MEASUREMENT PLASTICS INDUSTRY

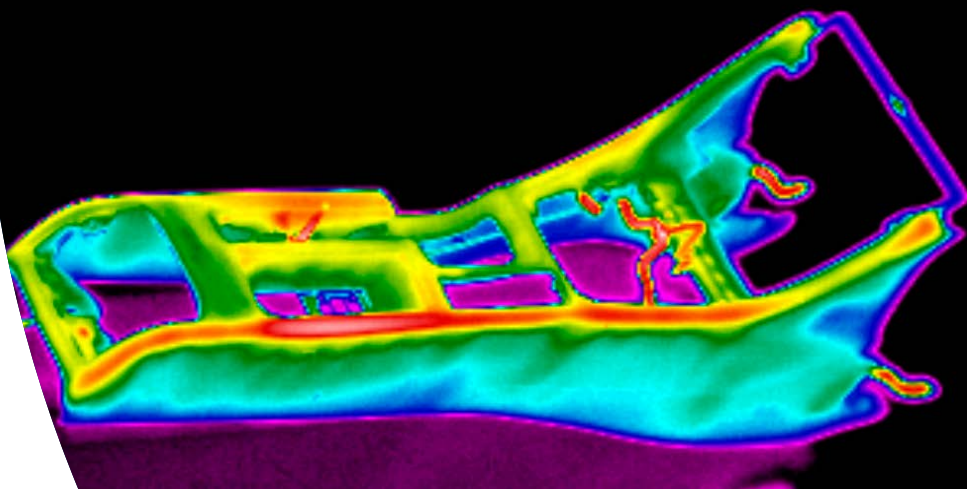
Production

Quality Assurance

Research & Development

Test & Measurement

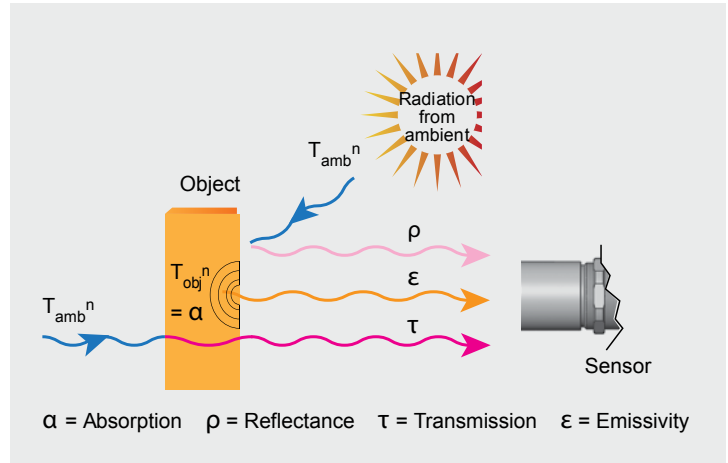
innovative infrared technology



Influence from the surroundings

The illustration shows that the transmissivity of air strongly depends on the wavelength. Strong flattening alternates with areas of high transmissivity – the so-called atmospheric windows. The transmissivity in the long-wave atmospheric window (8–14 μm) is constantly high whereas there are measurable extinctions by the atmosphere in the shortwave area, which may lead to false results. Typical measuring windows are 1.1 – 1.7 μm , 2 – 2.5 μm and 3 – 5 μm .

Additional influences can arise from heat sources in the environment of the measuring object. To prevent wrong measuring results due to increased ambient temperatures, the infrared thermometer compensates the influence of ambient temperatures beforehand (as e.g. when measuring temperatures of plastic foils in heating areas whereby the walls are hotter than the measuring objects). A second temperature sensing head helps to generate accurate measuring results by automatically compensating the ambient temperatures and a correctly adjusted emissivity.



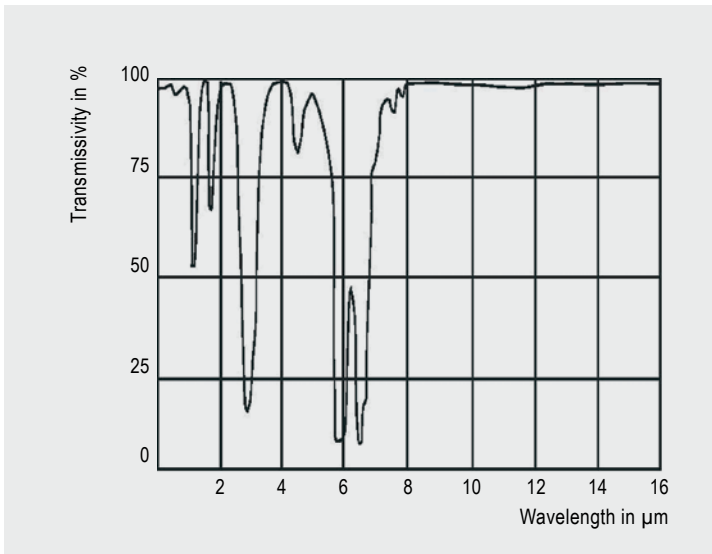
Compensating ambient influences

Emissivity and temperature measurement of plastics

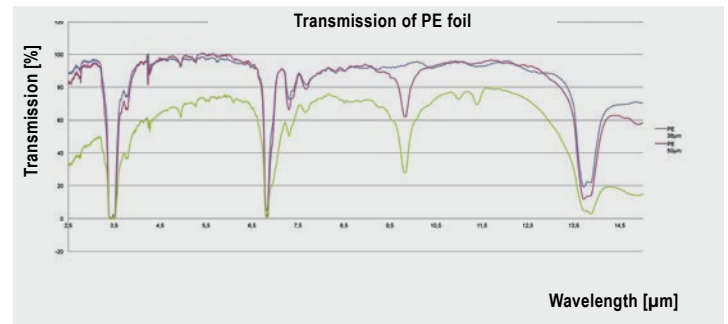
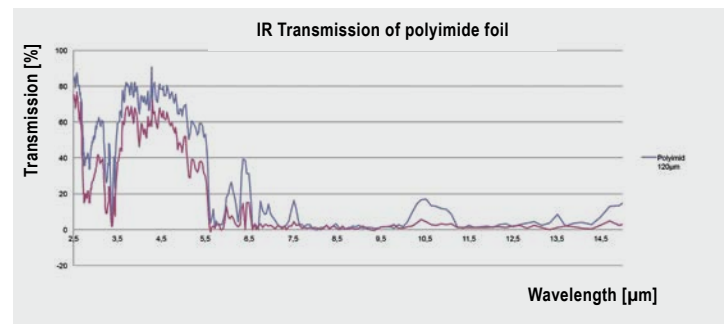
Emissivity is a key factor in the accurate measurement of temperatures. It depends on various influences and must be adjusted according to the application.

Emissivity theoretically depends on the material, its surface quality, wavelength, the measuring angle and, in some cases, even the applied measuring configuration.

Plastics with a thickness of > 0.4 mm (0.02 in) and pigmented films can be measured very easily in the long-wave IR spectral range (8-14 μm) with emissivities of ≥ 0.9 .



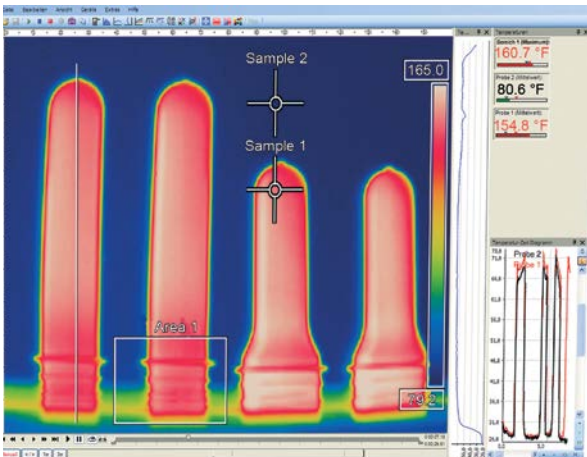
Spectral transmissivity of air (1 m, 32 °C (90 °F), 75 % r. F.)



Dust, smoke and suspended matter in the atmosphere can pollute the optics and result in false measuring data. Here air purge collars (which are installed in front of the optics with compressed air) help to prevent deposition of suspended matter in front of the optics. Accessories for air and water cooling support the use of infrared thermometers even in hazardous surroundings.



The CoolingJacket Advanced enables an operation within an ambient temperature of up to 315 °C (599 °)



In-depth inspection of preforms during bottle production.

Very thin plastic films are, however, transparent in this spectral range, meaning that a temperature measurement is only possible with the aid of material-specific absorption bands in the IR spectrum via correspondingly narrow-band sensitive IR sensors.

Polyethylene, polypropylene, nylon und polystyrene, for example, are IR opaque at 3.43 µm; for polyester, polyurethane, Teflon, FEP and polyamide, in contrast, it is 7.9 µm.

	C-H band 3.43 µm P3 > 50 °C (122 °F)	C-F Ester band 7.95 µm P7 > 0 °C (32 °F)
Polyethylene (PE)	Yes	No
Polypropylene (PP)	Yes	No
Cellophane	Yes	No
Polystyrene (PS)	Yes	No
Fluoroplastic (FEP)	No	Yes
Polyimide	No	Yes
Acrylic	Yes	Yes
Polycarbonate	Yes	Yes
Polyester	Yes (>10 µm)	Yes
	$\begin{array}{ccccccc} \text{H} & \text{H} & \text{H} & \text{H} & \text{H} & \text{H} & \text{H} \\ & & & & & & \\ -\text{C}- & \text{C}- & \text{C}- & \text{C}- & \text{C}- & \text{C}- & \dots \\ & & & & & & \\ \text{H} & \text{H} & \text{H} & \text{H} & \text{H} & \text{H} & \end{array}$ <p>Polyethylene</p>	$\left[\begin{array}{c} \text{F}_2 \\ \\ \text{C} \\ \\ \text{F}_2 \end{array} \right]_n \left[\begin{array}{c} \text{CF}_3 \\ \\ \text{C} \\ \\ \text{F} \end{array} \right]_m$ <p>FEP</p>

Line scan with compact infrared camera for thick plastic films

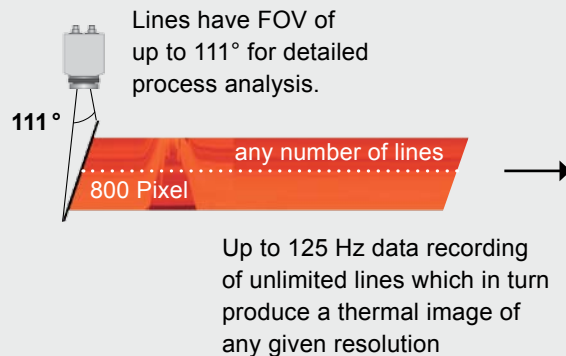
Plastics processors produce a wide range of products of various dimensions, thicknesses, textures, colors and embossed patterns. Here the manufacturing is subject to numerous thermal processes which have to be continually and rigorously checked at various critical points.

In order to ensure quality, a high level of temperature homogeneity is required and this is checked at various stages, including during thermoforming and in the calender zone, by means of a line scan.

When using an infrared camera as a line scanner, an arbitrary line is selected from the detector array. In addition to the compact construction and the lower price, there are two significant benefits: the line to be scanned can be positioned anywhere using the software and the user receives a complete IR image quasi as additional information – these are important advantages, especially during system setup.

The cameras can accurately measure surface temperatures of moving measurement objects using minimal apertures. This function is of particular significance in the plastics industry, since homogeneity of foil temperature has a direct impact on the quality of the final product. During the production process, temperatures are measured accordingly at many points and it is possible to intervene in the process, when necessary, if there are deviations in setpoint temperatures.

The optris PI 640, in combination with the 90° lens, allows for high-resolution line scanning with up to 800 pixels and a maximum scan angle of 111° with the use of the diagonal dimension.



Further information in our infrared basics brochure:
www.optris.com/optris-downloads

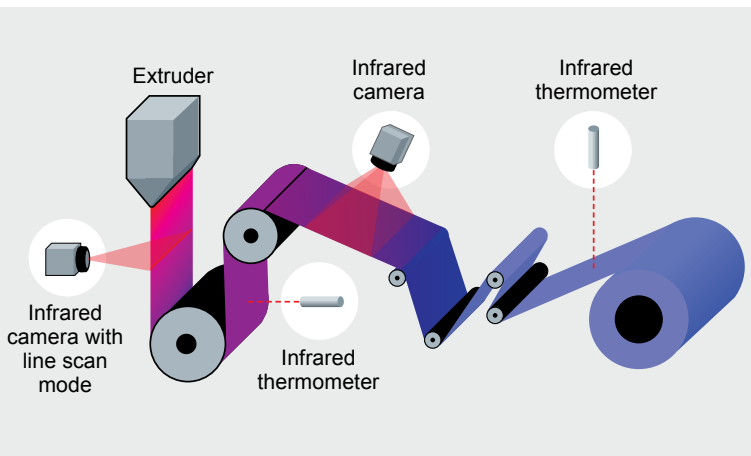
Applications of temperature measurement technology

PRODUCTION OF PLASTICS

The measurement of process, instrument and workpiece temperatures is a crucial factor in production and quality control in the plastics industry. In many areas only non-contact temperature monitoring is possible, and this is where infrared cameras and infrared thermometers are used. Optris offers compact cameras in the long-wave range as well as point sensors.

Flat film and sheet extrusion

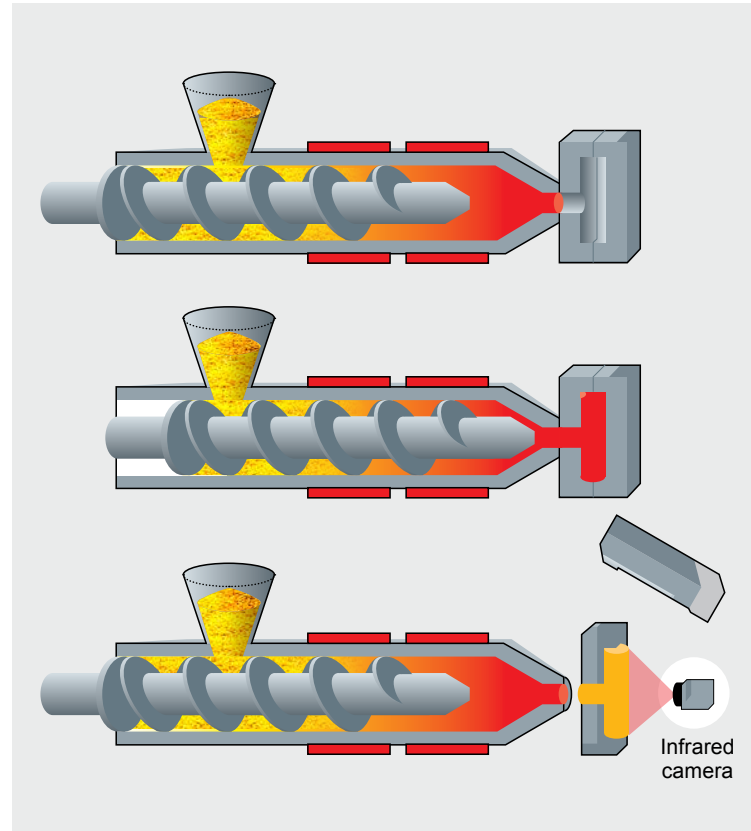
In flat film and sheet extrusion the molten mass is pressed through a wide slit die and then processed further using a calender. In this process the film is gradually cooled. The infrared sensors measure the temperature of the film at various points, thereby monitoring the process. Infrared cameras also allow cracks and surface defects to be detected.



Rotational molding

The rotational molding process is a specialist technique used in the manufacturing of plastic parts and is primarily used for larger objects. Here a negative mold is filled with a powdered or liquid raw material such as PE or PP and then sealed. The mold is then heated in an oven to a maximum of 320 °C (608 °F) and rotated biaxially. This causes the material to stick to the mold, layer by layer. The mold is subsequently cooled in a chamber and the plastic part removed. Upon opening the mold, the product is thermally tested to allow the production process to be readjusted if necessary.

Injection molding



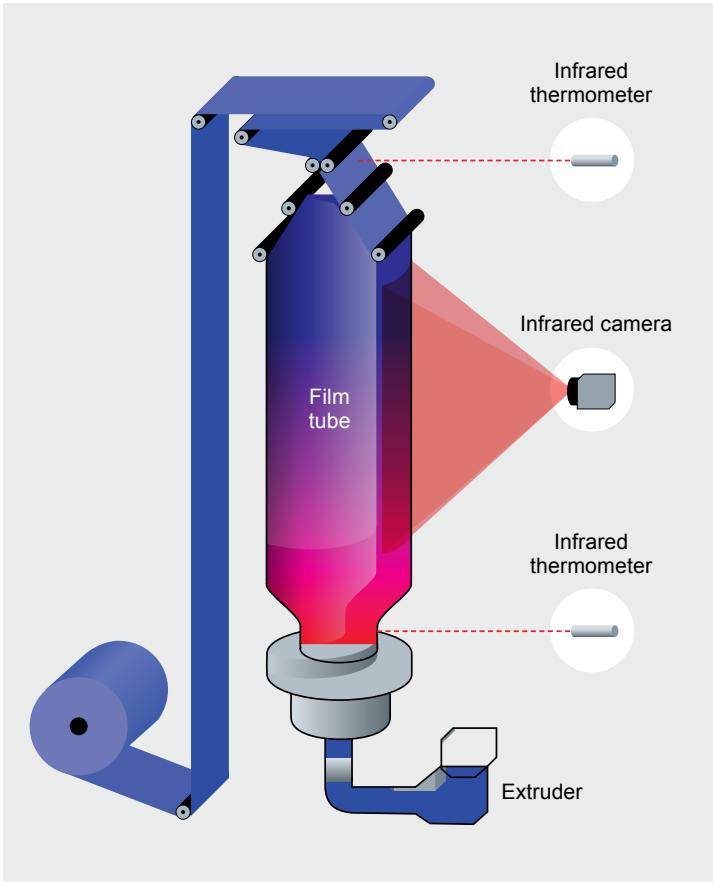
Injection molding is the most common production process in the manufacture of moldings from thermoplastic polymers. It is used in particular in the intermittent mass production of complex moldings where the size of the workpieces ranges from the smallest of cogs right up to large containers. The weight of a workpiece starts at 1 mg (0.001 g) and goes up to 100 kg (220.5 lb).

The pellets, often mixed with additives, are added to the cylinder via the funnel. The pellets are plasticized by the mechanical friction caused by the movement of the screw inside the cylinder as well as the external application of heat from the heating bands.

The resulting liquid mass is pushed to the tip of the screw and is then forced into the die in front of it through the injection unit nozzle.

The molding compound cools in the die which then opens when the hardening process is complete. To ensure the high quality of the molding it requires optimum temperature management, especially during the cooling phase in the die. The moldings, meanwhile, are automatically checked for homogenous temperature distribution immediately after ejection with infrared cameras.

Further information can be found in our application note "Injection molding" at www.optris.com/plastics



Extrusion blow molding of films

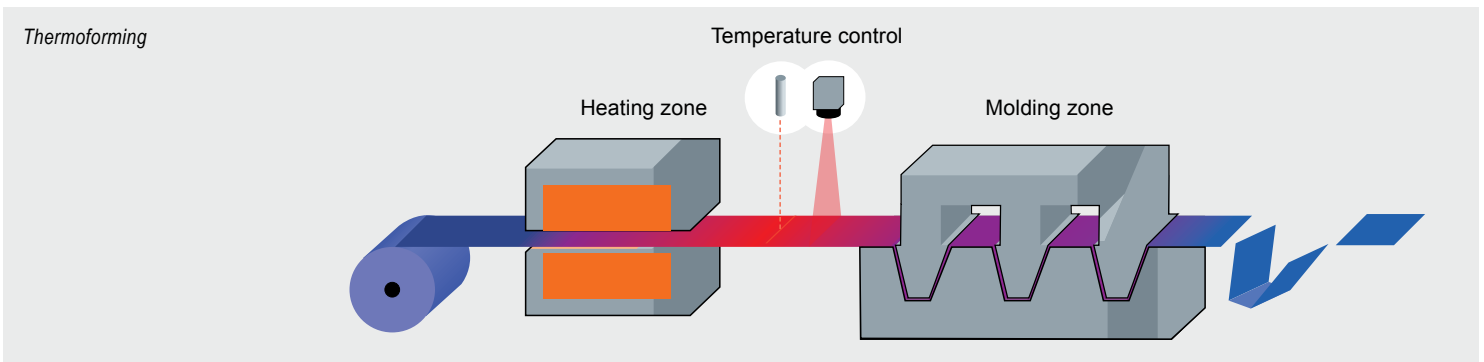
Similar to injection molding, the molten mass is pushed out of the extruder – however, in this case not into a die, rather through a die with a ring nozzle. The resulting film tube is then pulled vertically and blown up in the process. During this process air is used to cool the tube both inside and out.

From the moment the molten mass emerges from the nozzle, the temperature of the film tube needs to be measured at various points in order to ensure the characteristics and quality of the product.

Thermoforming

Sheets or unrolled film made from thermoplastic polymers are fed into the molding machine and then, in the first step, warmed up on both sides until the semi-finished product is completely melted. When a pre-defined temperature has been reached, the film is then sucked into a tempered mold using a vacuum. Only when the product has cooled down again and is dimensionally stable is it transported further to be finished.

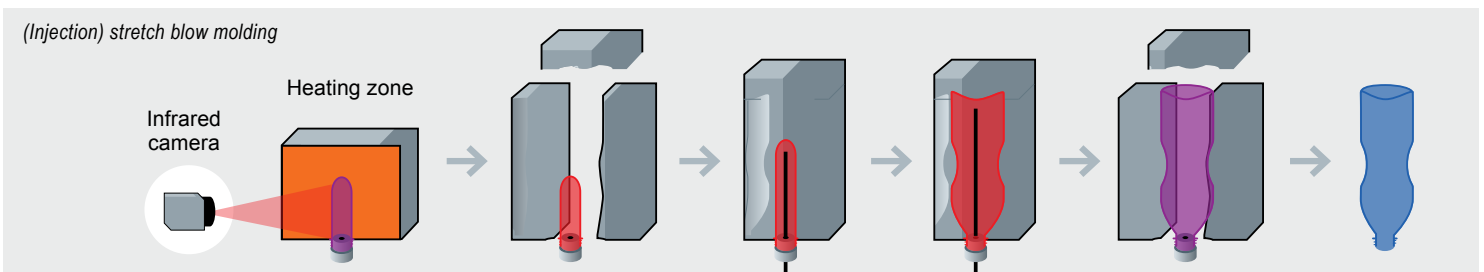
Further information can be found in our application note "Plastics industry" at www.optris.com/plastics



(Injection) stretch blow molding

For the manufacturing of PET bottles, the stretch blow molding or injection blow molding processes are used, whereby the preforms are heated until viscous. The heated forms are then fully formed in a blow mold using a stretching process. Before being transported further the bottle is

cooled inside a die. Depending on the texture of the preform and the desired end product, the preform needs to be brought up to a process temperature of 100 °C. Optris PI cameras are used to monitor this process.



Plastics industry

INFRARED CAMERAS AND INFRARED THERMOMETERS

The optris CT P3 infrared thermometer, with its extremely narrow-band spectral range of $3.43 \mu\text{m}$, is particularly suited to the **temperature measurement of very thin plastic materials such as PE, PP and PS.**



optris® CT P3

The temperature range extends from 50 to $400 \text{ }^\circ\text{C}$ ($122 \text{ }^\circ\text{F}$ to $752 \text{ }^\circ\text{F}$) with a machine response time of 100 ms . The sensing head can withstand temperatures of up to $75 \text{ }^\circ\text{C}$ ($167 \text{ }^\circ\text{F}$) without additional cooling. The film thermometer's separate electronics box is equipped with easy-to-access programming buttons and a backlit LCD display.

The innovative optris CT P7 infrared thermometer, with its specific spectral range of $7.9 \mu\text{m}$, is particularly suited to the **temperature measurement of thin plastic materials such as PET, PU, PTFE and PA.**



optris® CT P7

It has a temperature range of 0 to $710 \text{ }^\circ\text{C}$ (32 to $1,319 \text{ }^\circ\text{F}$), while the sensing head is resistant to temperatures of up to $85 \text{ }^\circ\text{C}$ ($185 \text{ }^\circ\text{F}$) without additional cooling. The machine sensing time is 150 ms . The pyrometer's separate electronics box features easy-to-access programming buttons and a backlit LCD display.

The optris CTlaser P7 infrared thermometer is suited to the temperature measurement of thin plastic materials like, for example, **PET, PU, PTFE and PA.** It measures the smallest objects with the greatest of accuracy.



optris® CTlaser P7

The IR thermometer boasts a wide temperature range of 0 to $710 \text{ }^\circ\text{C}$ ($1,319 \text{ }^\circ\text{F}$) and can be used at temperatures of up to $85 \text{ }^\circ\text{C}$ ($185 \text{ }^\circ\text{F}$) without additional cooling. It can capture objects as small as 1.6 mm (0.06 in) from a distance of 70 mm (2.76 in). A double laser precisely marks the measuring spot. The pyrometer's separate electronics box has easy-to-access programming buttons and a backlit LCD display. Additionally, a variety of selectable outputs ensures the reliable transfer of measured data and easy SPS integration.

The infrared cameras in the optris PI series are **fixed thermography systems** that offer outstanding value for money. In the plastics industry the LT cameras (8-14 μm) are used for molding or film thicknesses of over 0.4 mm (0.02 in). The thermal imaging cameras are connected to a computer via USB 2.0 or integrated into a PLC and are ready to use immediately after connecting.

Compact infrared cameras

At 120 Hz the **optris PI 160** (160 x 120 px) is ideally suited to fast processes.

For applications which require bi-spectral recording, the **optris PI 200 / 230** (160 x 120 px) is a good solution.

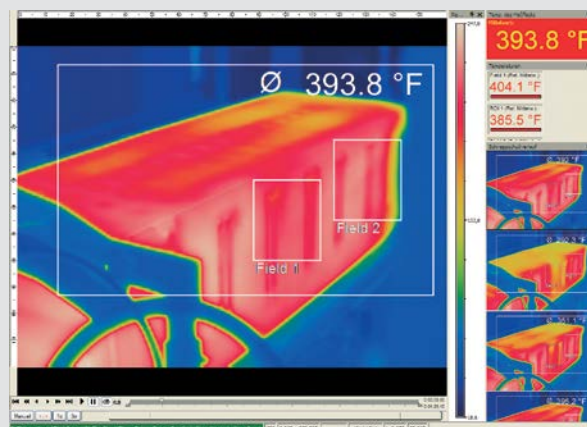
The **optris PI 400 / 450** (382 x 288 px) impresses with its high thermal sensitivity from 40 mK.

For high-resolution line scanning at high speeds (125 Hz) or for close, detailed inspection, the **optris PI 640** (640 x 480 px) VGA camera is an outstanding choice.



optris® PI Connect Software (Merging function)

In confined spaces in a machine, when there is not enough room to measure at the recommended distance, it may be necessary to use two or more infrared cameras to scan, for example, the entire product width. With the PI Connect software the data streams of the individual cameras can be simply combined to form an overall IR image, meaning the user can see the whole process or the temperature distribution across the entire film width in a single software window.



innovative infrared technology

Optris Infrared Sensing, LLC
200 International Drive
Suite 170
Portsmouth, NH 03801 USA
Phone: (603) 766-6062
E-mail: sales@optris-ir.com
www.optris.com

