

Read Me First

LL50A

Parameter Setting Software

with Ladder Program Building Function and Network Profile Creating Function
Installation Manual

UTAdvanced



IM 05P05A01-01EN

YOKOGAWA

Yokogawa Electric Corporation

12th Edition: Dec. 2022

This manual describes the installation/uninstallation of LL50A.

Product Registration

Thank you for purchasing YOKOGAWA products. YOKOGAWA provides registered users with a variety of information and services. Please allow us to serve you best by completing the product registration form accessible from our homepage.
<https://myportal.yokogawa.com/>

Contents

Introduction

1. Safety Precautions
2. Operating Environment
3. Installing USB Converter Driver Software
4. Installing LL50A Parameter Setting Software

Introduction

Thank you for purchasing the UTAdvanced Series Digital Indicating Controller and LL50A Parameter Setting Software. This manual describes the installation/uninstallation of LL50A. Please read though this user's manual carefully before using the product. For the function and operating method of LL50A Parameter Setting Software, see "LL50A Parameter Setting Software User's Manual." For details of each function, refer to the electronic manual. User's manuals can be downloaded or viewed at the following URL.

<https://www.yokogawa.com/ns/ut/im/>

■ Checking the Contents of the Package

Before using the product, refer to the table of Model and Suffix Codes to make sure that the delivered product is consistent with the model and suffix codes you ordered.
Model and Suffix Code

Model	Suffix code	Description
LL50A		Parameter Setting Software (with Ladder Program Building Function and Profile Creating Function)
	-00	Always "-00"

Also make sure that the following items are included in the package.
Dedicated cable (Parts No.: A1059UR) and dedicated adapter (Parts No.: L3502LP) ... x1
LL50A Installation Manual (this document) x1 (A3 size)

■ Checking the Contents of the Package

Download the latest version of the LL50A and USB driver software from the following URL;

<https://www.yokogawa.com/ns/ll50a/download/>

1. Safety Precautions



The following symbol is used on the instrument. It indicates the possibility of injury to the user or damage to the instrument, and signifies that the user must refer to the user's manual for special instructions. The same symbol is used in the user's manual on pages that the user needs to refer to, together with the term "WARNING" or "CAUTION."



CAUTION Calls attention to actions or conditions that could cause injury to the user or damage to the instrument or property and indicates precautions that should be taken to prevent such occurrences.

Note

Identifies important information required to operate the instrument.

2. Operating Environment

PC

Item	Windows 11 ^{*)} Japanese / English	Windows 10 ^{*)} Japanese / English	Windows 8.1 ^{*)} Japanese / English
Edition	Pro 64 bit	Pro 32 bit/64 bit	Pro 32 bit/64 bit
Version ^{*)}	21H2 or later	20H2 or later	Update
CPU	Intel processor that supports 64 bit and 1 GHz or faster with 2 or more cores	Intel processor that supports 32 bit/64 bit and 2 GHz or faster speed (recommended)	2GHz or faster Intel processor (recommended)
Recommended main memory capacity	8 GB or more	8 GB or more	2 GB or more
Recommended storage free capacity	32 GB or more	32 GB or more	16 GB or more
Display	Display compatible with OS	Display compatible with OS	Display compatible with OS
Communication port	Communication with a dedicated cable: USB port (1 channel) RS-485 communication: RS-232C port (1 channel) (RS-232C/485 converter required, YOKOGAWA ML2 recommended) Ethernet communication: 10BASE-T/100BASE-TX		
Peripherals	Printer (paper size for print: A4-size, or letter-size on the English version.) LL50A connection cable (dedicated, included with tool) Ethernet connection cable (necessary for Ethernet communication, compliant with 10BASE-T/100BASE-TX standard)		

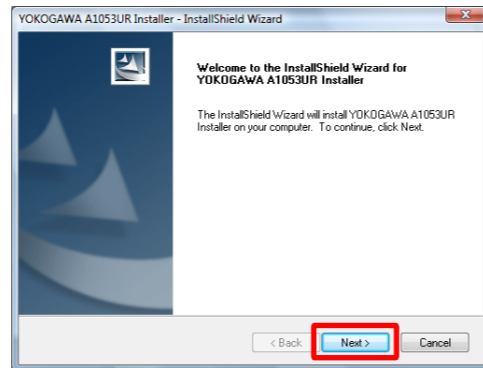
*1: Yokogawa will also stop supporting OSs that Microsoft Corporation no longer supports.

3. Installing USB Converter Driver Software

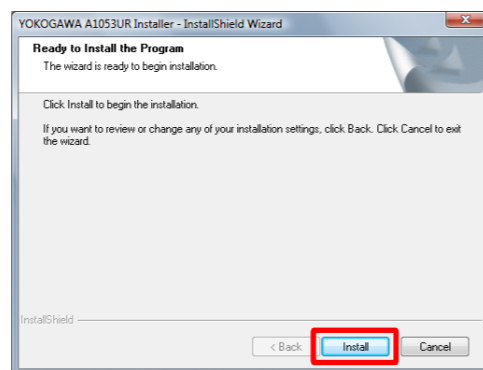


- Install USB converter driver software as an administrator.
- Avoid entering just the drive as the installation location, such as C:\. Enter the full directory path.
- Before installing USB converter driver software, quit all running applications.
- When reinstalling USB converter driver software, uninstall the installed USB converter driver software first, and then reinstall USB converter driver software.

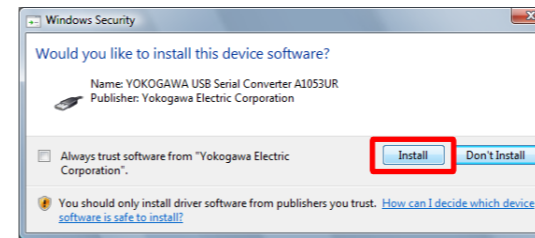
1. Start Windows.
2. Double-click the downloaded zip file to extract the files.
3. In the extracted folder, right-click the downloaded file, and click Run as administrator Double-click setup.exe.
4. The User Account Control screen appears. Click Yes.
5. Installshield Wizard screen appears. Click Next.



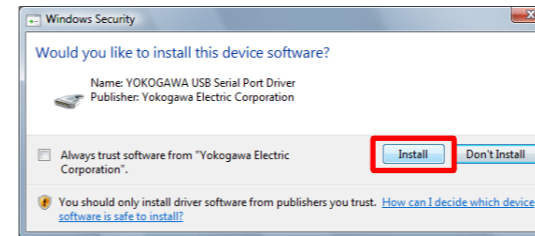
6. Click Install.



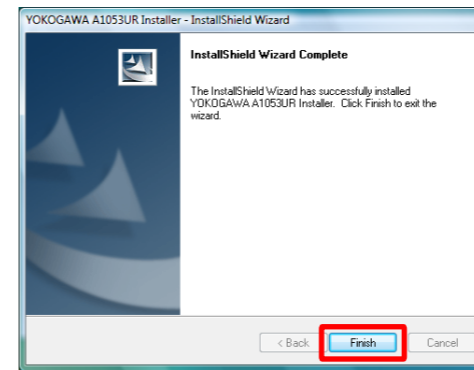
7. The Windows Security screen appears. Click Install. (USB device driver)



8. The Windows Security screen appears. Click Install. (COM port driver)



9. When installation is complete, the Finish dialog box appears. Click Finish.

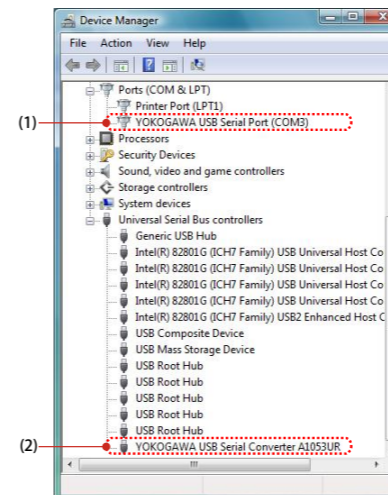


The dialog box closes. You have completed installing the driver software.

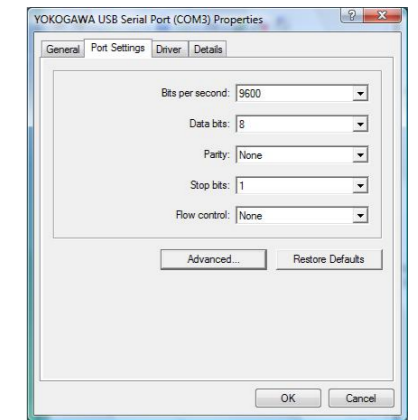
When you connect the dedicated cable to a USB port on your computer, the driver becomes available automatically.

■ Verifying Installation

1. For Windows 11:
Right-click the **Start button** and then click **Device Manager** in the list.
For Windows 10:
In the Windows search bar, type **Device Manager** and then click **Device Manager** in the pop-up window.
For Windows 8.1:
Hold down the **Windows key** and press **X**, and then click **Device Manager** in the list.
2. Verify that the virtual COM port driver (1) "YOKOGAWA USB Serial Port (COMn)" is displayed under "Ports (COM & LPT)" as COM port and the USB device driver (2) "YOKOGAWA USB Serial Converter A1053UR" is displayed under "Universal Serial Bus controllers."



3. The COM port number assigned to the dedicated cable can be verified by the port number displayed in (1) "YOKOGAWA USB Serial Port (COMn)" of Device Manager (see the step 3). To change the COM port number, double-click (1), select Port Settings tab of Properties screen and click **Advanced**. Change the COM port number in the Advanced Settings for COMn screen.

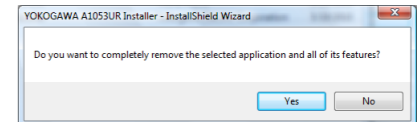


■ Uninstalling USB Converter Driver Software



CAUTION Unplug the dedicated cable if it is connected to a personal computer.

1. Unplug the dedicated cable if it is connected to a personal computer.
2. For Windows 10/Windows 11:
On the Windows **Start menu**, click **Settings > Apps > Apps & Features**.
For Windows 8.1:
Hold down the **Windows key** and press **X**, and then click **Uninstall a Program > Programs and Features** in the list.
3. Select **YOKOGAWA A1053UR Installer** and click **Uninstall**.
4. The **User Account Control** screen appears. Click **Continue**.
5. The **Confirm Uninstall** screen appears. Click **Yes**.



6. The **Uninstall Complete** screen appears. Click **Finish**.

You have completed uninstalling the driver software.

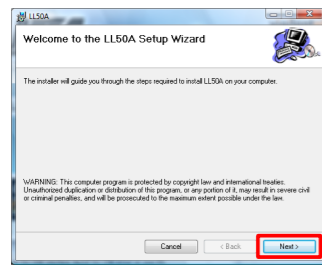
4. Installing LL50A Parameter Setting Software



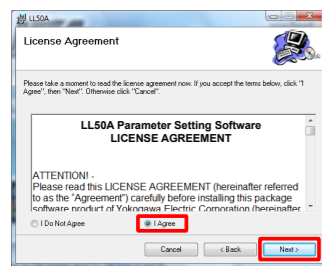
- Install the software as an administrator.
- Do not set LL50A user file save directory in Program Files folder. The LL50A will not work properly.
- Before installing LL50A Setting Software, quit all running applications.
- Avoid entering just the drive as the installation location, such as C:\. Enter the full directory path.
- When .NET Framework 4.0 is not installed on personal computer, .NET Framework 4.0 is installed to start LL50A.
- When reinstalling LL50A, uninstall the installed LL50A first, and then reinstall LL50A.

■ Installing LL50A Parameter Setting Software

1. Start Windows.
2. Double-click the downloaded zip file to extract the files.
3. In the extracted folder, right-click the downloaded file, and click Run as administrator. Double-click setup.exe.
4. When .NET Framework 4.0 is not installed on a personal computer, the license agreement for installing it appears. Click **Accept**.
5. The message "Copying required files" appears. And then the message "Installing .NET Framework 4.0" appears.
6. The User Account Control screen appears. Click **Yes**.
7. The message "Please wait while Setup configures the components." appears.
8. The message "Setup must reboot before proceeding." may appear. Click **Yes**.
9. Personal computer reboots. The LL50A Setup Wizard appears. Click **Next**.



10. The License Agreement for Package Software Product appears. Read this license agreement carefully. If you agree, select **I Agree**. Click **Next**.



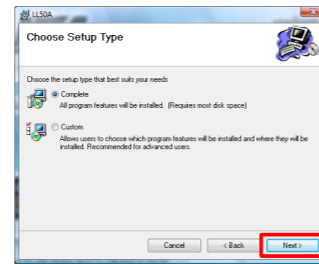
Note: If **I Do Not Agree** is selected, you cannot install the LL50A. Click **Cancel**.

11. The Select Installation Folder screen appears. Select **Everyone** or **Just me**. Click **Next**.

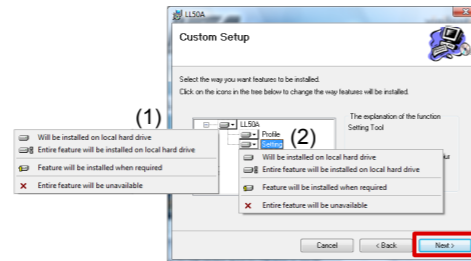
Note

When you install the LL50A after "Everyone" is selected, even if other users log in, it is possible to start LL50A from the **Start menu > Programs menu**.
When you install the LL50A after "Just me" is selected, even if other users log in, LL50A is not displayed in the **Programs**.

12. The Setup Type screen appears. Select **Complete** and click **Next**. (We recommend choosing **Complete**.)



Note1: If you chose **Complete**, go to the procedure 13.
Note2: If you chose **Custom**, continue the procedure as follows:
Choose each installation method (*1) of **LL50A**, or **Profile** and **Setting**, then click **Next**.



*1: **Profile** is to install Network Profile Tool.
Setting is to install Parameter Setting Tool.
(1) On the **LL50A**, select **Entire feature will be installed on local hard drive**.
(2) On the **Profile** and **Setting**, select either **Will be installed on local hard drive**, or **Entire feature will be unavailable**.

13. The Confirm Installation screen appears. Click **Next**.
14. The message "Installing LL50A" appears. The User Account Control screen appears. Click **Yes**.
15. Installation begins. When installation is completed, a confirmation message appears. Click **Close**.

The following icons are appeared on the desktop.



You have completed installing the LL50A parameter setting software.

■ Verifying Installation of LL50A Parameter Setting Software

For Windows 11:
[UTAdvanced] - [Setting Tool] and [Network Profile Tool] will be registered under All apps in the Windows Start menu.
For Windows 10:
[UTAdvanced] - [Setting Tool] and [Network Profile Tool] will be registered under Apps in the Windows Start menu.
For Windows 8.1:
From the **Start menu** of Windows, point to **All Programs**, then **UTAdvanced** and verify that the **Setting Tool** and the **Network Profile Tool** is registered.

■ Uninstalling LL50A Parameter Setting Software

For Windows 11/Windows 10:
On the Windows **Start menu**, click **Settings > Apps > Apps & Features > LL50A** and uninstall it.
For Windows 8.1:
Hold down the **Windows key** and press **X**, and then click **Uninstall a Program > Programs and Features > LL50A** in the list and uninstall it.

The User Account Control screen appears. Click **Yes**. The LL50A is uninstalled.

*1: From the **Start menu** of Windows, select **Control Panel > Uninstall a program** if the control panel's display method is "Control Panel Home."

Authorised Representative in the EEA and the Importer into the EU/EEA Market

The Authorised Representative for this product in the EEA and the importer for this product into the EU/EEA market via Yokogawa sale channel is:
Yokogawa Europe B.V.
Euroweg 2, 3825 HD Amersfoort, The Netherlands

Importer for This Product into the Great Britain Market

In relation to UKCA marking, the importer for this product into the Great Britain market via the YOKOGAWA sales channel is:
Yokogawa United Kingdom Limited
Stuart Road Manor Park Runcorn, WA7 1TR, United Kingdom

Printed Manual

LL50A Parameter Setting Software with Ladder Program Building Function and Network Profile Creating Function Installation Manual (IM 05P05A01-01EN)

Electronic Manual

You can download the latest manuals from the following website:
URL: <https://www.yokogawa.com/ns/ut/im/>
LL50A Parameter Setting Software with Ladder Program Building Function and Network Profile Creating Function (IM 05P05A01-02EN)

General Specifications

LL50A Parameter Setting Software with Ladder Program Building Function and Network Profile Creating Function (GS 05P05A01-01EN)

* The last two characters of the manual number and general specification number indicate the language in which the manual is written.

Waste Electrical and Electronic Equipment (WEEE)

(Only valid in the EEA for EU WEEE Directive and in the UK for UK WEEE Regulation)

This product complies with the WEEE marking requirement. This marking indicates that you must not discard this electrical/electronic product in domestic household waste. When disposing of products in the EEA or UK, contact your local Yokogawa office in the EEA or UK respectively.



QR Code

The product has a QR Code pasted for efficient plant maintenance work and asset information management. It enables confirming the specifications of purchased products and user's manuals.
For more details, please refer to the following URL.
<https://www.yokogawa.com/qr-code>
QR Code is a registered trademark of DENSO WAVE INCORPORATED.

YOKOGAWA

YOKOGAWA ELECTRIC CORPORATION
Network Solutions Business Division
2-9-32, Naka-cho Musashino-shi, Tokyo 180-8750 JAPAN
YOKOGAWA CORPORATION OF AMERICA
Head office and for product sales
2 Dart Road, Newnan, Georgia 30265, USA
YOKOGAWA EUROPE B.V.
Headquarters
Euroweg 2, 3825 HD Amersfoort, THE NETHERLANDS

www.yokogawa.com