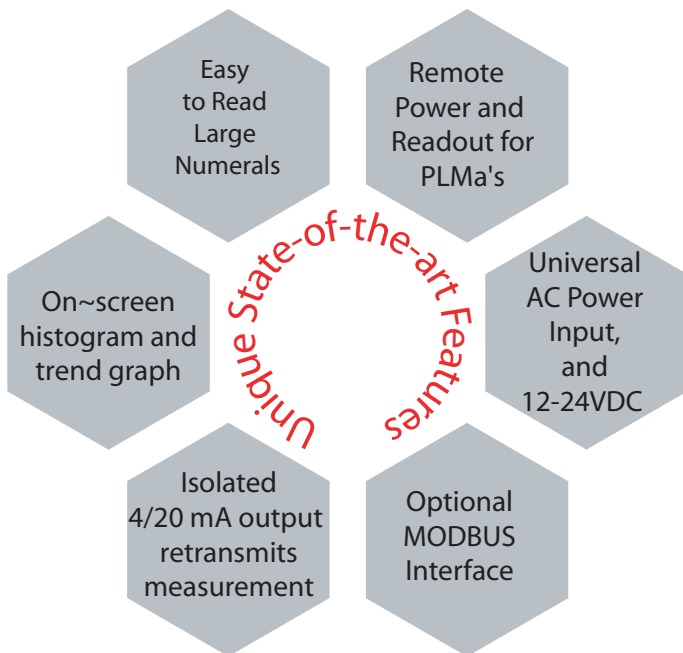


### Feature Rich Wallmount Display for moisture measurement!



### more FEATURES

- Provides Remote Display and Power for PLMa's
- State-of-the-art electronics & software
- Advanced User-friendly Interface
- Continuous Status and Diagnostics display
- Optional battery backup for weeks of logging data
- Optional: Alarm Relays with programmable hysteresis
- Optional: Built-in Self Verification & Calibration
- Optional Shock-mount vibration isolation
- ABS impact resistant IP65 enclosure
- Wall Mount 5.16" w x 7.32" h x 3.25" d
- Separate terminal section pre-punched for cable grips
- Units of measure °C & °F dewpoint, ppmV, ppmW,  $\mu$ B H<sub>2</sub>O vapor pressure, grams of H<sub>2</sub>O / m<sup>3</sup>, Lbs H<sub>2</sub>O / 10<sup>6</sup> standard cubic feet in Natural Gas.
- Virtual Analyzer PC s/w for training & evaluation

### APPLICATIONS

- Natural Gas
- Petrochemical
- Industrial Gases
- Power Generation
- Furnace Gas / Heat Treating
- Air Dryers
- Pharmaceutical
- Aerospace
- Medical



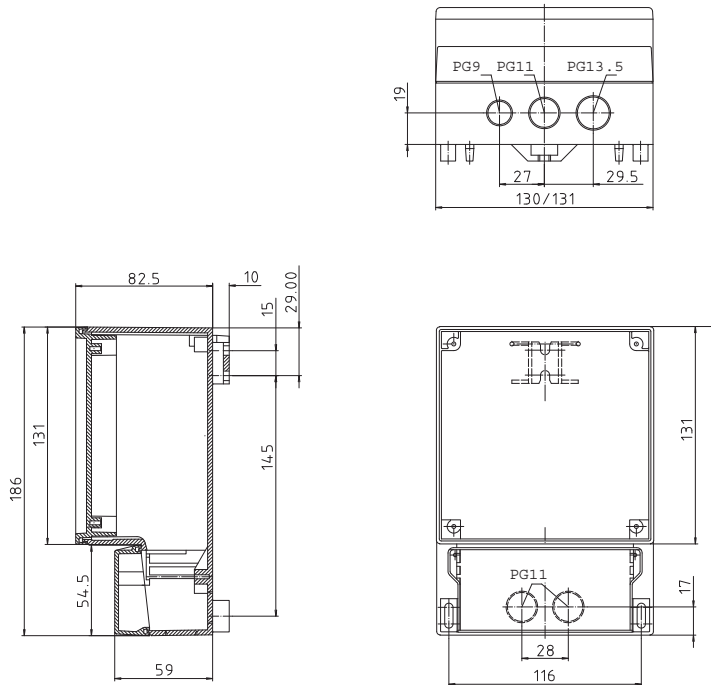
**PhyMetrix, Inc.**  
Moisture Measurement  
Innovation at work

- ◆ Test
- ◆ Measure
- ◆ Calibrate
- ◆ Quick
- ◆ Reproducible
- ◆ NIST Traceable

Proudly Designed, Developed and Manufactured in the USA



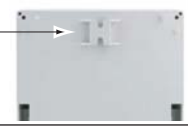
### Installation and Connection Options



PhyMetrix model WMI wiring compartment opened

### Technical Specifications

Moisture Sensor	Consult transmitter (model: PLMa User's Manual) Range -110°C to +20°C Accuracy: ±2°C temperature corrected Repeatability: 0.8°C Response time: 95% of step change in 3 min. Sample flow: >1 LPM
Temperature Sensor	-40°C to +70°C ±2°C
Electrical	Two automatic detection - self configuring power modes: 1) 90-260VAC 47-440Hz or 2) 12-24VDC 10VA with the following optional I/O: a) isolated RS-422/485 b) isolated 4/20mA sink or source c) 2 Alarm Relays - 3A, 250VAC / 30VDC contacts Insulation Resistance: >100MΩ at 500VDC Optional Rechargeable batteries: 30 hours continuous operation. While logging needs to be ON for approximately 1 minute per sample. Thus can take 1800 samples on battery power, if taking samples once every 5 minutes batteries will last over 6 days of logging data.
Mechanical	ABS Wall Mount Enclosure Dimensions 5.16" w x 7.32" h x 3.25" d Weight Total: 1.5 Lbs (0.7 Kg) A rear suspension unit, ensures a concealed fit on the wall. IP65 protection Optional Shock-mount vibration isolation
Temperature Range	WMI electronics: -40°C to +85°C LCD operating: -20°C to +70°C storage: -30°C to +80°C
Miscellaneous Features	NIST traceable calibrations Virtual Analyzer PC software for training and evaluation, allows the user to experience the exact interface on their own PC with voice explanations Units of measure: °C & °F dewpoint, ppmV, ppmW, μB H <sub>2</sub> O vapor pressure, grams of H <sub>2</sub> O / m <sup>3</sup> and Lbs H <sub>2</sub> O / 10 <sup>6</sup> standard cubic feet in Natural Gas Modbus: ASCII and RTU



ORDERING INFORMATION		Part Number
<b>Moisture Monitor Indicator</b>	Model: <b>WMI</b>	<b>WMI</b>
Analog Output 4/20mA		suffix - A
Alarm Relays		suffix - R
Digital RS485 Modbus interface		suffix - D
Shock-mount vibration isolation		suffix - S
Rechargeable battery backup		suffix - B

Represented by: