

Data Sheet

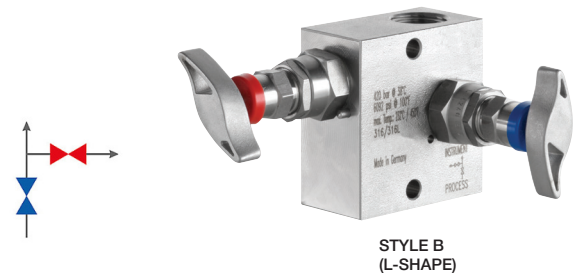
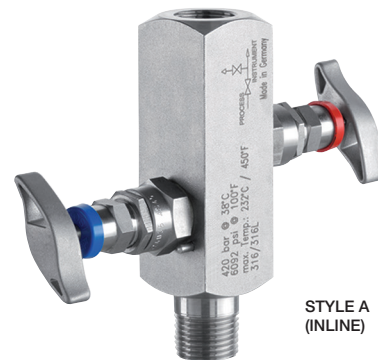
Gauge Valve - V02 Series Block and Bleed Manifold

FEATURES

- Isolates and bleeds process from instrument assembly pressure for instrument maintenance
- 316L SS construction
- Support mounting brackets available

TYPICAL USES

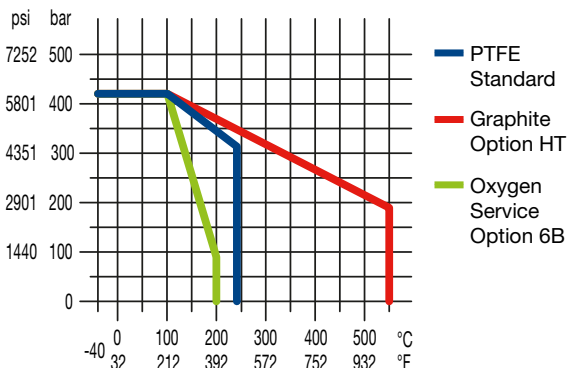
- Oil & Gas Industry
 - Upstream: Onshore/offshore production
 - Midstream: Transport, storage and natural gas compression
 - Downstream: Refineries & petrochemical industries
- Chemical Industry
- Power Plants
 - Conventional power plants
 - Flue gas desulfurization plants
- Other Industries
 - Waste incineration plants
 - Seawater desalination plants
 - Steel mills
 - Cement plants



SPECIFICATIONS

Process Connection:	Style A ½ NPT Male Style B ½ NPT Female Style C ½ NPT Female
Instrument Connection:	½ NPT Female
Construction:	316 SS
Max. Pressure Rating	6092 psi at 100°F (420 bar at 38°C) more details, check chart below
Max. Temperature Rating for:	
PTFE	450°F (232°C)
Graphite	1,022°F (550°C)
Oxygen service	392°F (200°C)
Min. Temperature Rating for:	
PTFE	-40°F (-40 °C)
Graphite	-40°F (-40 °C)

- Available for oxygen service
- Color-coded dust caps prevent dust ingress and identifies handle function
- PTFE Packing (other materials available upon request)
- Stem with cold rolled surface, back seat and non-rotating needle tip
- Supplied with wetted parts according to NACE MR0175/MR0103 (CD-5 Certificate)
- Material traceability reports available per EN 10204 3.1



COMPONENTS	MATERIAL
Wetted	
Body	1.4404 (316L SS)
Valve stem	1.4404 (316L SS)
Needle tip	1.4571 (316Ti SS)
Packing	PTFE up to 390°F (200 °C)
Gland nut	1.4301 (304 SS)
Screw Plug	1.4404 (316L SS)
Non-Wetted	
Bonnet	316 SS (1.4401)
T-handle	SS

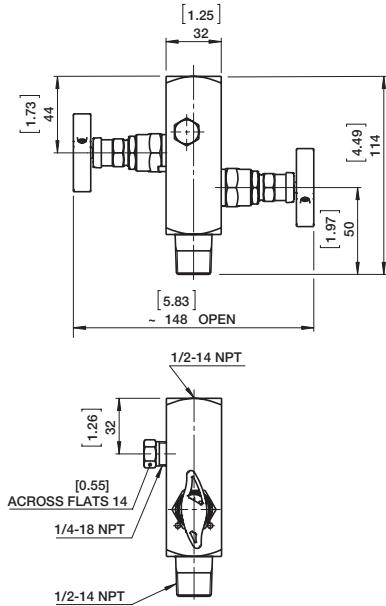
Gauge Valve - V02 Series Block and Bleed Manifold

ORDERING CODE	Example:	04	V02	2V	A	SS	50	X2G
Process Connection								
02 - ¼ NPT Male (style A only)								
04 - ½ NPT Male (style A only)		04						
25 - ¼ NPT Female								
50 - ½ NPT Female								
Series Code								
V02 - Valve			V02					
Valves								
2V - 2 Valve				2V				
Version								
A - Style A (In-Line)					A			
B - Style B (L-Shape)								
C - Style C (Y-shape)								
Material								
SS - 316L SS						SS		
PM - Monel® 400								
HH - Hastelloy® C-276								
Instrument Connection								
04 - ½ NPT Male (style A only)								
25 - ¼ NPT Female								
50 - ½ NPT Female							50	
Options (if choosing an option(s) must include an "X")								
C3 - Material traceability report per EN 10204 3.1								X__
CD-5 - Certificate according to NACE for Oilfields MR0175/ISO 15156-2009 and for Refineries MR0103-2010								
P7 - Power piping acc. to ASME B31.1								
2G - Graphite bonnet for high temperatures								2G
HY - Hydrostatic testing								
NH - SS Tags wired to valve								
PN700 - High pressure (10,000 psi / 689 bar)								
TM - 2" Pipe mounting bracket								
6B - Cleaned for oxygen service								

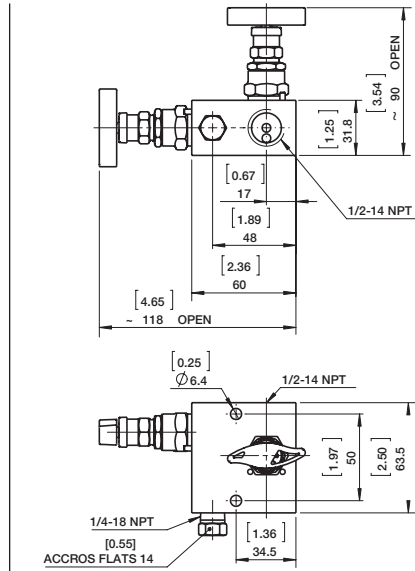
Gauge Valve - V02 Series Block and Bleed Manifold

DIMENSIONS (DIMENSIONS IN [] ARE DECIMAL INCHES)

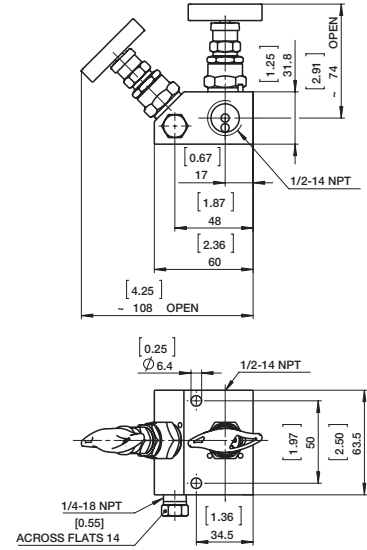
Drawings are for reference only, consult Ashcroft for specific dimensional drawings.



Style A (In-line)



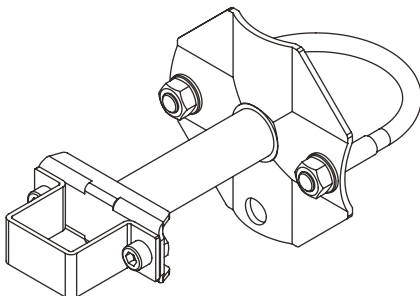
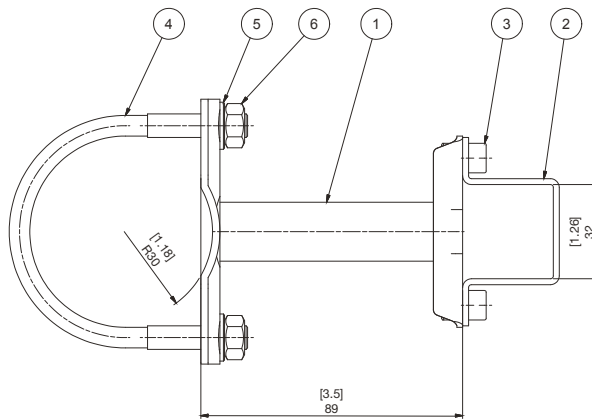
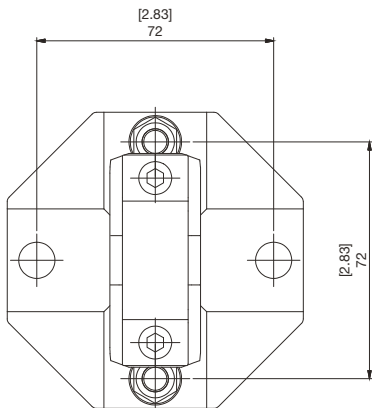
Style B (L-Shape)



Style C (Y-Shape)

OPTION TM - 2" PIPE MOUNTING BRACKET (DIMENSIONS IN [] ARE DECIMAL INCHES)

Drawings are for reference only, consult Ashcroft for specific dimensional drawings.



Pos.	Description	Material
1	Mounting bracket	316Ti SS
2	Bracket	316Ti SS
3	Socket head cap screw ISO 4762 -M6x10	316 SS
4	U-bolt M8 for 2" pipe	316 SS
5	Washer 8,4 DIN 128-B	316 SS