

# Compact Series User Manual

(for Apple and Android devices)

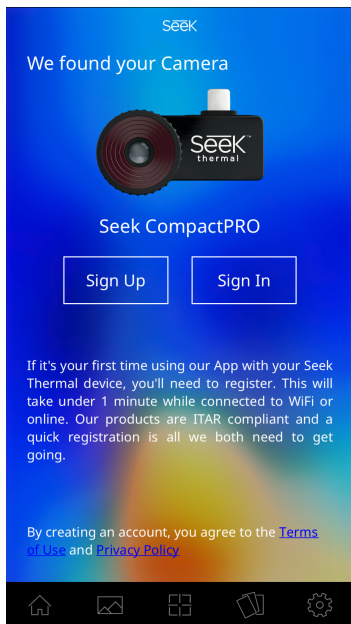
Welcome to the official Seek Thermal App! Let's take a few minutes to quickly walk through the basics of the App and learn how to use your Device.

Watch the app intro videos in the Settings panel for more.

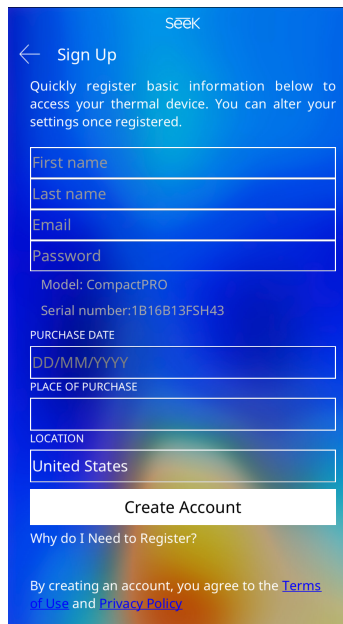
Seek  
thermal

## Why Register?

Registration is primarily a means to provide Seek Thermal with necessary basic information on device ownership to maintain ITAR compliance as manufacturer / exporter of thermal imaging devices. It is required to use the device. We securely hold your information and do not provide it to any other authorities or third-party companies. This also lets us provide you with better customer service, software upgrades, warranty status reminders, and makes it easier to stay connected to new product and company news.



## Registration



## First Time Registration:

When you plug in your Seek Thermal camera for the first time, choose Sign Up and enter the required information.

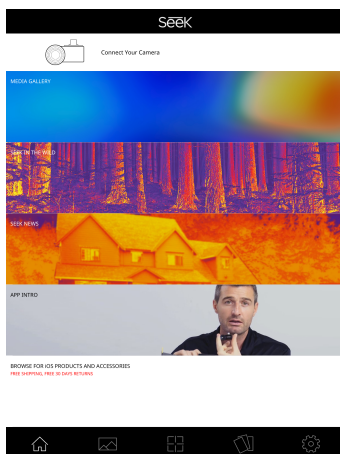
## Changing your Registration:

Go to thermal.com and login to make changes to your user account.

To read our data policy visit:

[www.thermal.com/datapolicy](http://www.thermal.com/datapolicy)

## Home Screen



- **CAMERA TYPE INDICATOR:** Shows which type of thermal camera you have connected.
- **MEDIA GALLERY:** Here you will find all your photos & videos.
- **SEEK IN THE WILD:** See thermal images from the Seek community.
- **SEEK NEWS:** Read the latest articles featuring Seek Thermal.
- **APP INTRO:** Watch a variety of videos to help you get started with the new Seek Thermal app.
- **BROWSE FOR PRODUCTS AND ACCESSORIES:** Shop for the latest Seek Thermal gear.

## Icon Guide

### Navigating with the Bottom Menu



**Home** icon: Select **HOME** to return to the App home page.



**Media** icon: Touch **MEDIA** to go to your gallery for photos & videos.



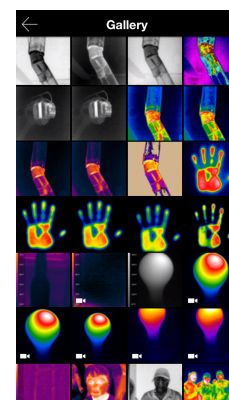
**Mode** icon: Touch **MODE** icon to access all features: Span & Level, Spot, HiLo and more.



**Filters** icon: Change your **PALETTES** while in Camera or Video mode any time here.

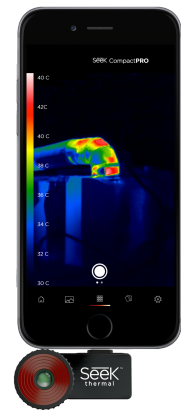


**Settings** icon: All **SETTINGS** and preferences are located here.



# Thermal Imaging Modes

	<b>Spot</b> mode: Use the crosshair to pinpoint a specific temperature.
	<b>Hi/Lo</b> mode: Pinpoint the highest and lowest temperatures.
	<b>Normal</b> mode: Default mode that maximizes thermal image consistency using auto exposure control.
	<b>Full Frame</b> mode: Displays all temperature data for maximum clarity.
	<b>Span and Level*</b> mode: Easily set and lock a temperature range to display the maximum thermal information of any object or scene. <b>CompactPro Only*</b>
	<b>Threshold Above</b> mode:
	<b>Threshold Equals</b> mode:
	<b>Threshold Below</b> mode:
	<b>Thermal+</b> mode: Experimental mode that allows thermal and visual imaging side by side in real-time.



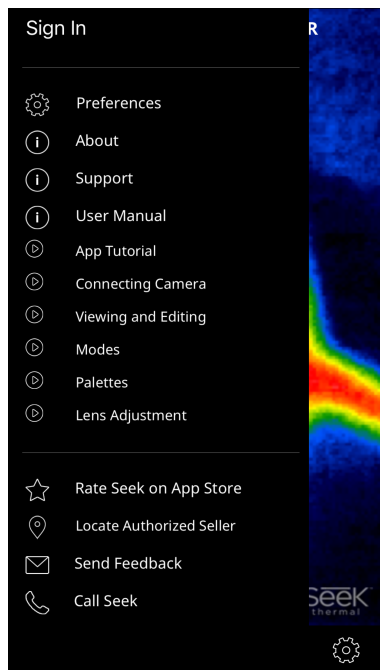
\*Span and Level mode as well as emissivity control are only available with CompactPro

## Settings Drawer

Change temperature units (°C,°F,K), aspect ratio (4:3 or 16:9), and watermarks.

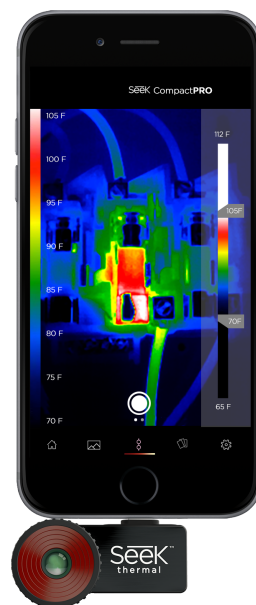
View helpful how-to videos on how to use the Seek Thermal app.

Rate our app and Contact us for more support.

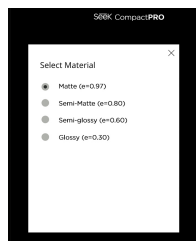


## Thermal Span and Level (CompactPro Only)

Easily set and lock a temperature range to display the maximum thermal information of any object or scene with a set point and range.

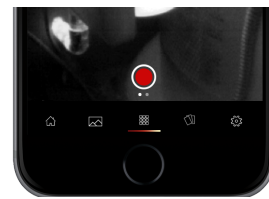
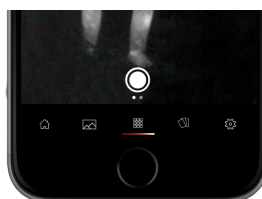


## Emissivity Control (CompactPro Only)



Emissivity is a material property that defines how much IR light is reflected from a particular surface. Calibrate for emissivity through four pre-defined settings to ensure accurate temperature readings and reporting.

## Taking Photos & Video



Swipe left and right to switch between photo & video mode.

Made for iPhone SE, iPhone 6s Plus, iPhone 6s, iPhone 6 Plus, iPhone 6, iPhone 5s, iPhone 5c, and iPhone 5.

Utilizes the power and display of your smartphone. (<280mW)

### Warranty

[thermal.com/warranty](http://thermal.com/warranty)

### Support

**North America**  
Email: [support@thermal.com](mailto:support@thermal.com)  
Phone: 1 (844) SEE-HEAT

**Europe**  
Email: [eu.support@thermal.com](mailto:eu.support@thermal.com)  
Phone: +44 (0) 1425 284267



"Made for iPhone" means that an electronic accessory has been designed to connect specifically to iPhone, and has been certified by the developer to meet Apple performance standards. Please note that the use of this accessory with iPhone may affect wireless performance.

iPhone® is a trademark of Apple Inc., registered in the U.S. and other countries.