

Check Components



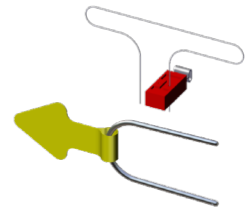
Meter with Indicator
and hinged cover



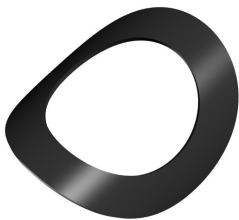
Saddle Assembly
(Packaged Separately)



Display Security Seal



Security Clip & Seal
(Security Clip has small hole for seal wire)

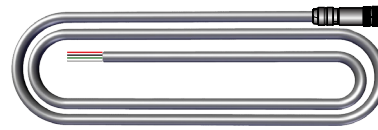


Saddle Gasket



Security Tab

Optional



Power/Output Cable

Recommended Tools

Recommended:

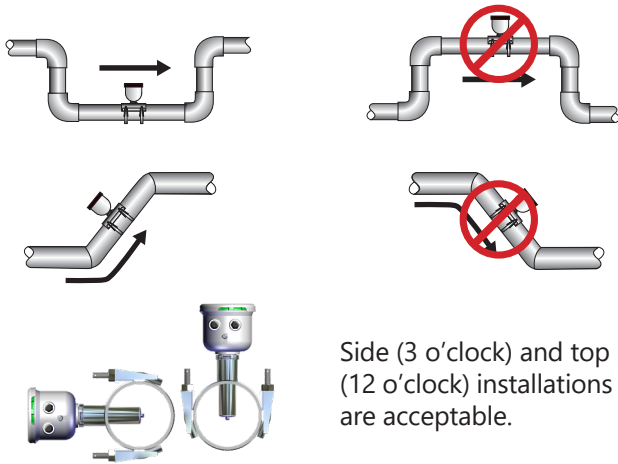
- 3/32" or 2.5mm (small) flat head screw driver
- Crescent Wrench
- 5/32" Hex Key

Optional:

- Channel locks
- 6" Strap Wrench

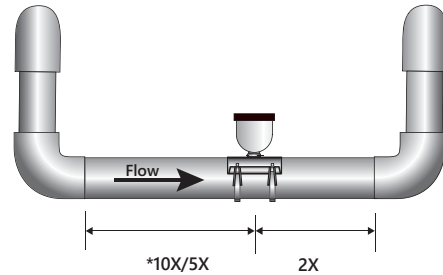
Positioning

Choose a position that will ensure a full pipe.



Side (3 o'clock) and top (12 o'clock) installations are acceptable.

Choose a position that will minimize flow distortion.



*Upstream straight pipe is selected during initial setup. Upstream options are 5X or 10X the diameter and are based on the amount of straight pipe available in either new or propeller meter replacement installation. Downstream straight pipe requirement is 2X the diameter. See programming setup for details.

Flow Straightening Vanes/Conditioners

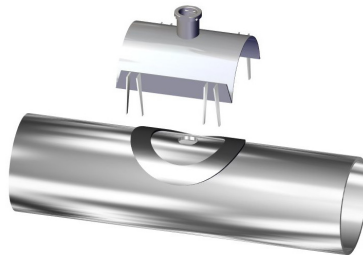
1. If you have the bolt-in, 3-vane style they may be removed or left in place. They do not affect performance.
2. If you have the 6-vane, bolt-in style with a cone, it should be removed.
3. For 6-vane, weld-in style installed in a spool, turn the spool 180° and reinstall with the vanes behind the meter.
4. Orifice, tube or Vortab style conditioners will not affect performance.

BEFORE INSTALLING measure & record inside diameter (ID) of pipe.

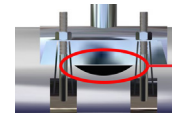
1. Clean the mounting surface, remove any roughness from the area and cut a 1.75" hole into pipe. Place gasket centered over pipe opening.



2. Place saddle top over gasket.

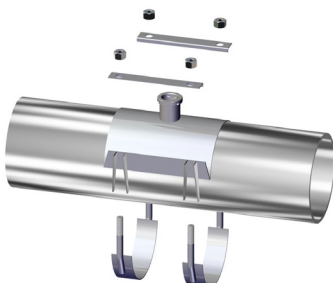


3. Make sure saddle top covers entire gasket.

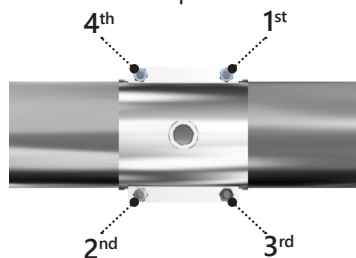


NOTE: Gasket will extend outside of a 4" pipe saddle's sides.

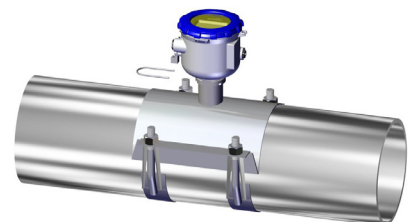
4. Place the saddle clamps under the pipe and align with the clamp guides on the saddle top.



5. Place saddle plates over saddle clamp threads. Attach nuts and tighten as shown below. Torque to 75 ft-lb in cross pattern.



6. Insert the EX90 sensor into the saddle fitting and secure with mounting clip or attach security clip and seals if required.

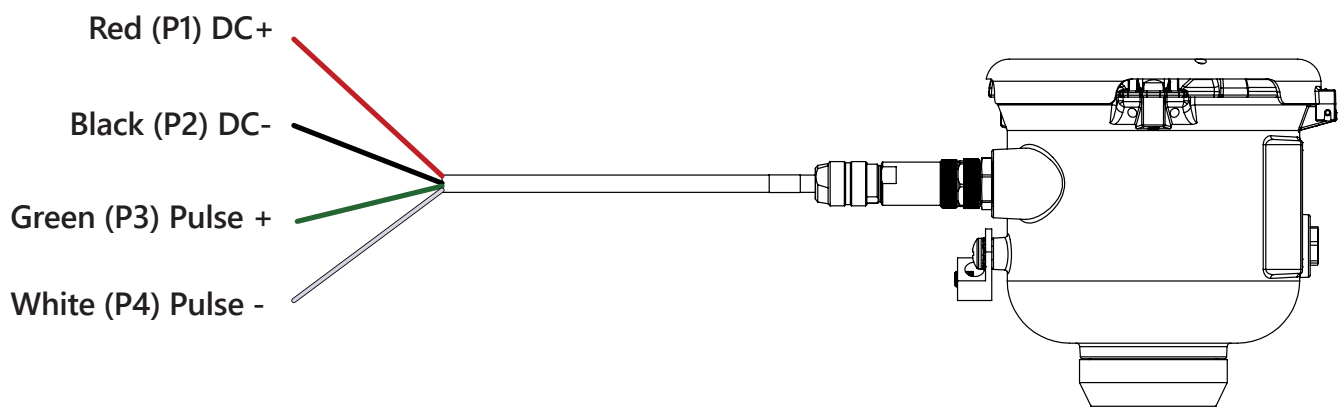


Wiring

Battery Power with No External Output

If not using external output, no wiring is required.

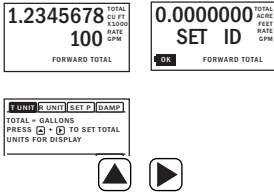
Connections for External DC Power and Pulse Output with DC or Battery Power



Warnings *Refer to instruction manual for further details.*

- Confirm that U-clip retainer is installed and never remove the U-clip retainer when pipe is under pressure—may result in serious injury.
- Saddle bolts must be tightened evenly. Do not over tighten.
- Install security seals during installation if regulations require.
- Ensure proper grounding when required.
- Programming pipe ID, pipe insertion hole size and straight pipe configuration is required for the meter to read.
- To prevent tampering or changes to the program, after initial set-up, either enter a security pass-code, or remove the display lid and place a security tab over one of the arrows before installing the housing security seal.

Menu System



The **HOME Screen** displays flow volume, direction of the flow total and flow RATE along with status conditions such as Empty Pipe. Two buttons below the LCD display are used to access menu screens for viewing and changing meter setup parameters.

These two buttons are light sensors which can detect when a finger is covering them and activate upon release. Only three button touch actions are needed to control navigation through the menus, settings changes and back to the home screen.

HORIZONTAL SCROLLING:
 Tap right-hand button to scroll horizontally through menu tabs or move horizontally within a tab dialog when applicable.

SELECT: Tap left-hand button to change a highlighted item within a tab dialog.

ENTER/EXIT: Hold left button while tapping right button once to enter or exit a tab dialog or to navigate between the HOME and other menu screens.

All menu screens consist of two rows of tabs surrounding a dialog box that lets you view and change setup parameters. To enter the Menu System perform the hold and tap sequence.



Changing Settings

HOME SCREEN

The Home Screen page on a new meter will indicate for you to SET ID. Tap to move to the Passcode Screen.

PASSCODE

Set passcode if required, or to move to the Standard Menu Options Screen. Tap .

T UNIT

View or change TOTAL volume units

R UNIT

View or change flow RATE units

SET P

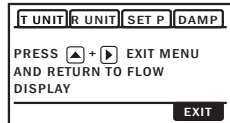
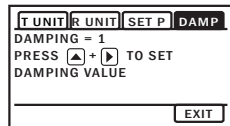
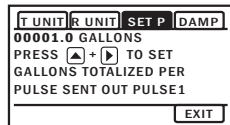
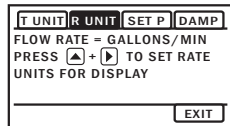
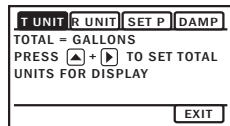
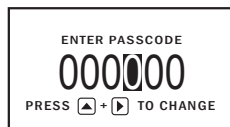
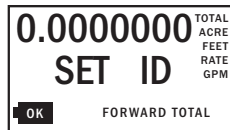
View or change pulse output scaling

DAMP

View or change # of sample periods for rolling average* DAMP default set to 15

EXIT

Return to HOME SCREEN or Tap five times, to enter a SUBMENU screen from which you can access the required pipe setting functions



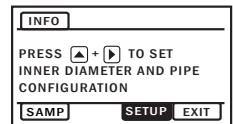
Enter Pipe Settings (Required)



INITIAL SETUP OF ID, HOLE, AND PIPE IS REQUIRED FOR THE METER TO OPERATE PROPERLY.

1. SETUP

View or change meter configuration settings.

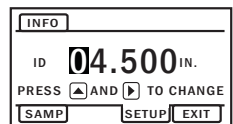


2. SETUP (Menu Functionality)

The highlighted value can be changed using the arrows. The value on the left is the menu name. Cycle through these by pressing . Press to highlight and change the value of the menus.

3. ID (Required)

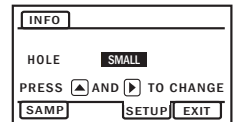
View or change inner diameter of the pipe. Measurement in inches.



4. HOLE (Required)

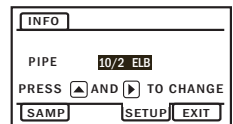
View or change installation pipe hole size. Tap then to change setting from N/A (default) to small and large sizes.

Note: See instruction manual page 14 for hole size description.



5. PIPE (Required)

View or change pipe configuration based on installation. Tap then to change setting from N/A (default) to 10/2, 5/2 or STRAIGHT (conditions with 15 diameters or more)



INFO: Meter model, serial number, firmware version

SAMP: Sample rate (Default is set to 5 seconds. Battery life with a 5-second sampling rate is four years. Increase sampling interval to extend battery life. (May vary depending on environmental factors. See instruction manual for more details.)