

Rough-n-Ready System

VIRTUi²® Installation Instructions

PNs 155626, 155628, 155629, 155630, 155631, 155631

The Rough-n-Ready System is comprised of three components: a RoughDeck® floor scale, an iQUBE²® junction box and the VIRTUi² software to be installed on a PC. Use the following instructions as a guide to set up the system.

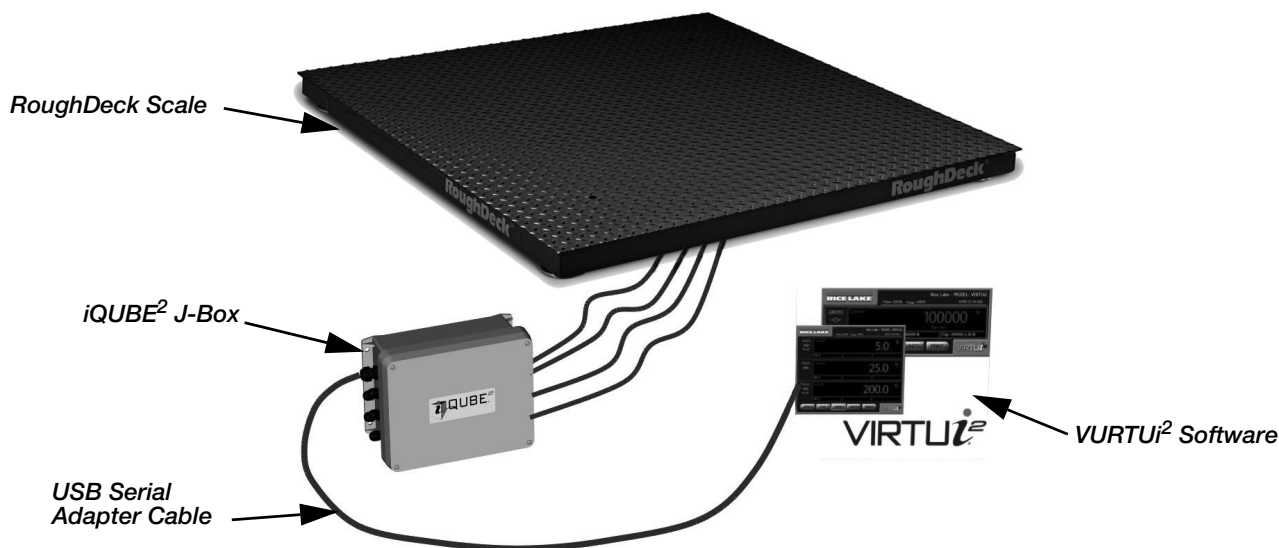


Figure 1. Parts Included in Rough-n-Ready System



WARNING

Do not install or work on this equipment unless you have read and understand the instructions and warnings in the manuals included. Failure to follow the instructions or heed the warnings could result in injury. Contact any Rice Lake Weighing Systems dealer for replacement manuals.



Note

If a field installation is being done, install Virtui² on the PC prior to going into the field. An Internet connection is required to download the program.

1. Install the RoughDeck floor scale (see RoughDeck manual, PN 66662).
2. Remotely install the iQUBE² (see iQUBE² Manual, PN 106113).
3. Install the VIRTUi² program on a PC.
 - Connect to ricelake.com to download the software
 - Install according to the software instructions
4. Connect the iQube² to the PC using the USB serial adapter cable.
5. Open VIRTUi² Configuration.

6. Select File, then Login

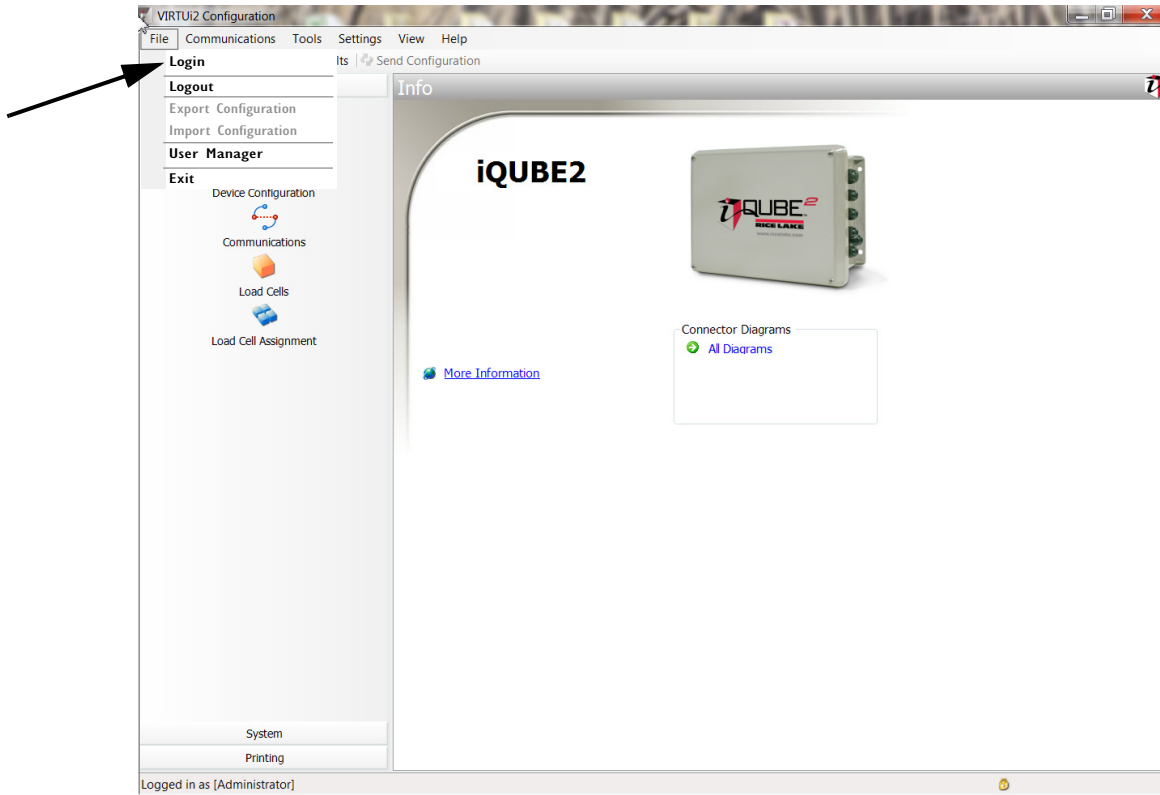


Figure 2. Login Screen

7. Enter username: Administrator

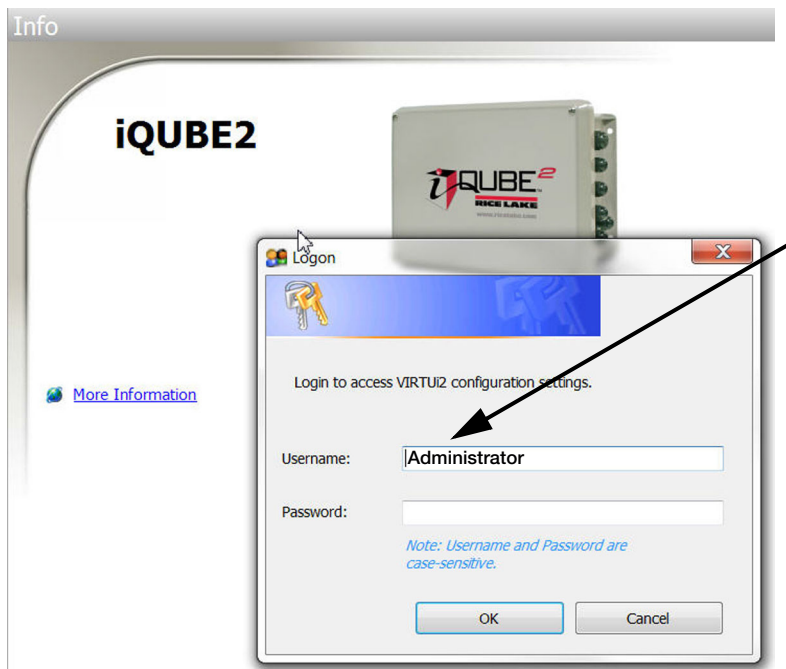


Figure 3. Enter Username

8. Select **OK**, a popup appears in lower right area of the screen that indicates the connection was successful.

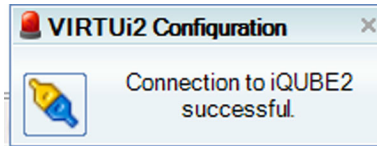


Figure 4. Connection Successful

9. Select **Communication**, then **Connect** to connect to the iQUBE².

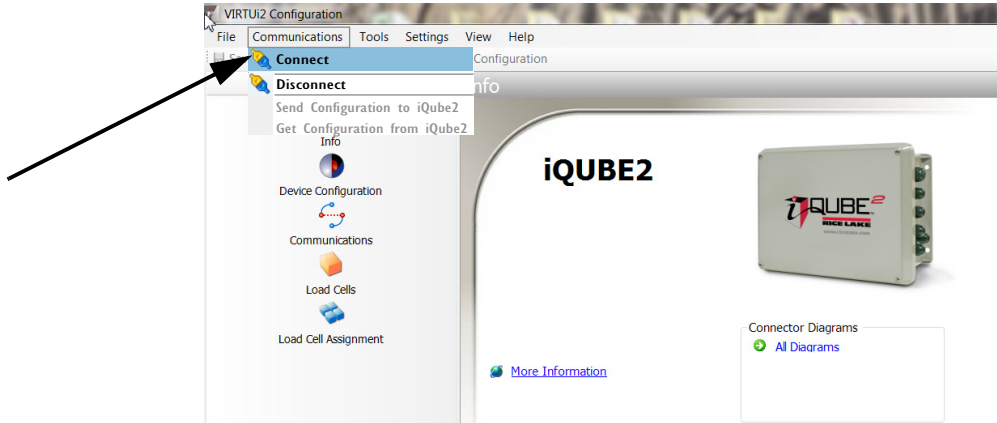


Figure 5. Connect to the iQUBE²

10. Select **Communication**, then **Get Configuration from iQUBE2**. A popup will appear showing the progress of the upload.
11. Select **File**, then **Exit** to close the program. Select **Save** when asked.

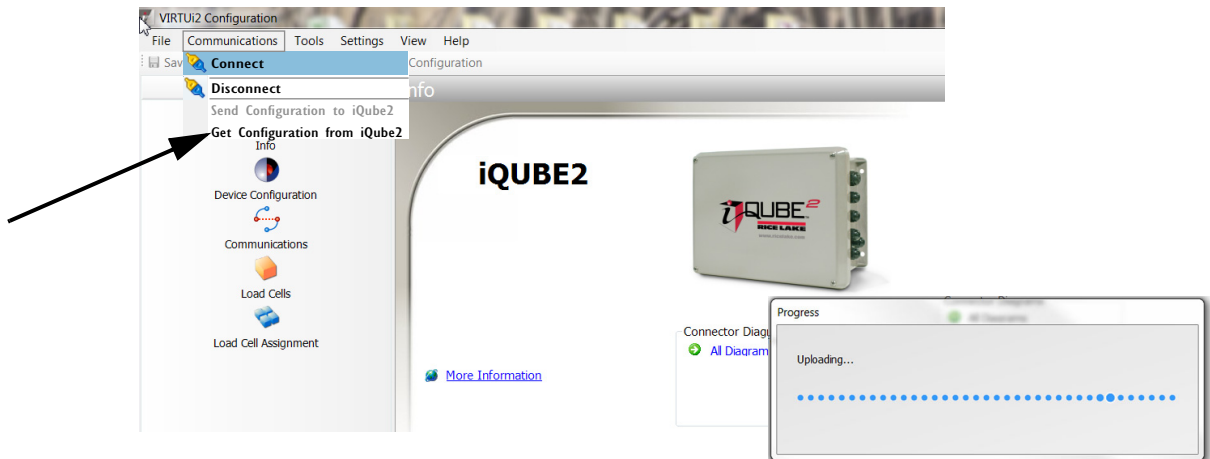
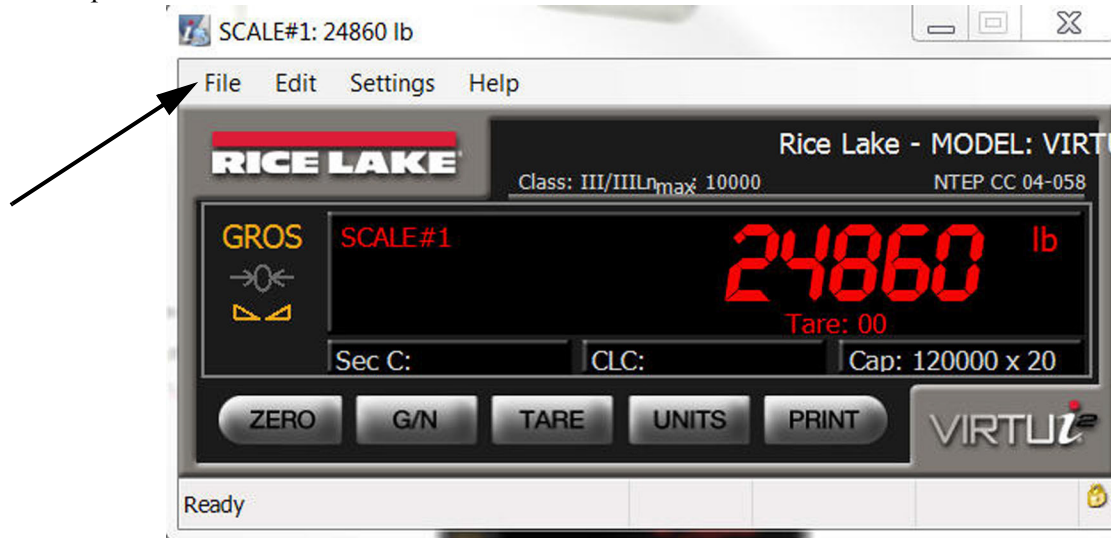


Figure 6. Updating Configuration

12. Open the Virtui Viewer.



13. Select **File**, then **Login**.

14. Enter username: Administrator

15. Enter license number obtained from Rice Lake Weighing Systems.



Note To obtain a license number call 800-472-6703 between 6:30 am and 6:30 pm CST and ask for inside sales.

The Rough-n-Ready system is now ready to begin weighing.



© Rice Lake Weighing Systems Specifications subject to change without notice.
Rice Lake Weighing Systems is an ISO 9001 registered company.

230 W. Coleman St. • Rice Lake, WI 54868 • USA
U.S. 800-472-6703 • Canada/Mexico 800-321-6703 • International 715-234-9171 • Europe +31 (0)26 472 1319

www.ricelake.com