

D-M-LOG-HC2-V1_00 Document code	Rotronic AG Bassersdorf, Switzerland Unit		
LOG-HC2 Universal datalogger: User manual Document title	<table border="1"> <tr> <td data-bbox="682 165 1038 225"> User manual Document Type </td> </tr> <tr> <td data-bbox="682 225 1038 269"> Page 1 of 60 </td> </tr> </table>	User manual Document Type	Page 1 of 60
User manual Document Type			
Page 1 of 60			

LOG-HC2

Universal datalogger with LCD screen

User manual



D-M-LOG-HC2-V1_00	Rotronic AG Bassersdorf, Switzerland
Document code	Unit
LOG-HC2 Universal datalogger: User manual	User manual Document Type
Document title	Page 2 of 60

Table of contents

Important notes regarding this user manual	7
Safety instructions and warnings	8
Operating Instructions	9
Overview	10
Controls	10
Turning the unit on / saving measurement parameters	11
Logger display / Logger operation	12
Logger states	12
Logger display and logger operation	13
Indicator LED's	14
Maintenance	15
User checks	15
Cleaning	15
Charging the battery	15
Specifications	16
Defining the axes	16
Terminal assignment (only LOG-HC2-RO1)	17
Operating, transport and storage conditions	18
Troubleshooting	18
Packing list	19
Disposal	19
PC software	20
Setup	28
Basic settings	29
Prediction	30
Reducing the volume of data	31
Conditional recording of measurement parameters (limits)	31
Setting the alarm limit	31
LED behaviour	32
Transferring basic settings to several loggers	32
User settings	33
Adjusting the channel properties	34
Change basic unit	36
Calibrating the sensors	37
Changing the display parameter	38
Defining the logger display	39

D-M-LOG-HC2-V1_00 <small>Document code</small>	Rotronic AG Bassersdorf, Switzerland <small>Unit</small>
LOG-HC2 Universal datalogger: User manual <small>Document title</small>	<p style="text-align: right;">User manual <small>Document Type</small></p> <p style="text-align: center;">Page 3 of 60</p>

Formatting the memory	40
Reader	41
Viewer	42
Online	48
Utility programs	50
CSV	51
Cutter	52
Calc	53
Concat	56
Additional software for PCs	58
FreeMat	59

D-M-LOG-HC2-V1_00 <small>Document code</small>	Rotronic AG Bassersdorf, Switzerland <small>Unit</small>		
LOG-HC2 Universal datalogger: User manual <small>Document title</small>	<table border="1"> <tr> <td data-bbox="682 165 1038 225"> User manual <small>Document Type</small> </td> </tr> <tr> <td data-bbox="682 225 1038 274"> Page 4 of 60 </td> </tr> </table>	User manual <small>Document Type</small>	Page 4 of 60
User manual <small>Document Type</small>			
Page 4 of 60			

Document releases

Doc. Release	Date	Notes
_00	28.11.2011	Original release

User manual

rotronic LOG-HC2

Operating instructions

Instructions

PC software

Setup

Setup

Reader

Reader

Viewer

Viewer

Online

Online


Utility programs


Additional software for PCs




Important notes regarding this user manual

In this manual notes of particular importance are presented as follows:

 <p style="font-weight: bold; font-size: 1.2em; margin: 0;">WARNING</p>	<p>Indicates that equipment may suffer damage or that there is a risk of injury to the operator or user should the instructions not be followed correctly.</p>
--	--

 <p style="font-weight: bold; font-size: 1.2em; margin: 0;">CAUTION</p>	<p>Indicates that equipment may suffer damage or that data loss may occur should the instructions not be followed correctly.</p>
--	--

Conventions

Term / Symbol	Description	Example
Logger	In this manual the term "logger" is used to mean both "LOG-HC2-RO1" and "LOG- HC2-P1".	
Commands, programs, menu items, functions, field names	Commands, programs, menu items, functions, field names are shown in bold .	Record
->	See page	-> 5
	<ul style="list-style-type: none"> • Reference to further information • Further information 	

Safety instructions and warnings



WARNING

- Read the operating instructions carefully before using the logger or the logger software. This will protect you personally and avoid damage to the unit.
- The logger is a unit for recording and displaying measurement parameters and may not be used for safety-related applications.
- Before using the logger check the unit itself and all cables for visible signs of damage and never operate a damaged logger. A damaged logger can endanger operator safety! Should the logger not function perfectly or appear to be damaged, send it to Rotronic for repair.
- Ensure that no fluids enter the logger's casing. Fluids cause corrosion damage and short-circuits inside the logger.
- The logger must never be opened or modified. The manufacturer cannot be held liable for damage resulting from use other than that for which the unit is intended, or from improper operation of the unit.
- Never use a logger with a leaking battery. Should a battery leak be detected ensure that the electrolyte does not come into contact with the skin, the eyes or the mouth. Should this occur, thoroughly rinse the affected area with water for at least 15 minutes. Consult a doctor. Do not breathe in any vapours emitted. Immediately clean the electrolyte from the logger using a soft cloth and dispose of the cloth subsequently.



CAUTION

- Ensure the proper disposal of an obsolete logger and USB connection cable ->17.

Operating Instructions



LOG-HC2-R01



LOG-HC2-P1

Overview

The logger is a miniaturised universal datalogger for measuring and recording different physical measurement parameters. For further information, see data sheets.

The Logger PC program enables users to customise the way in which the logger measures and records data according to their requirements. The integrated clock (RTC) allows data from as many loggers as required to be synchronised and merged into a single data record.



LOG-HC2-RO1



LOG-HC2-P1



USB connection cable

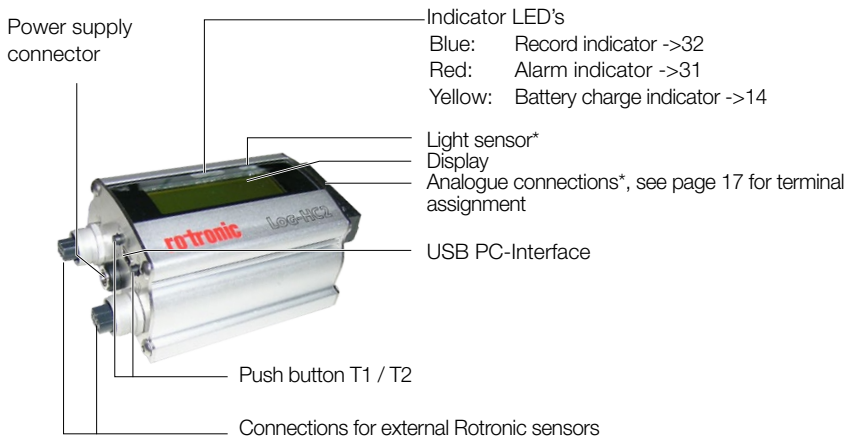


CD with LOG software



Mains adapter

Controls



*LOG-HC2-RO1 only

Turning the unit on / saving measurement parameters

The storage properties of the logger are determined using the **Setup** program*. Control of measurement parameter storage can be either time activated, value activated or by pushing the push button.

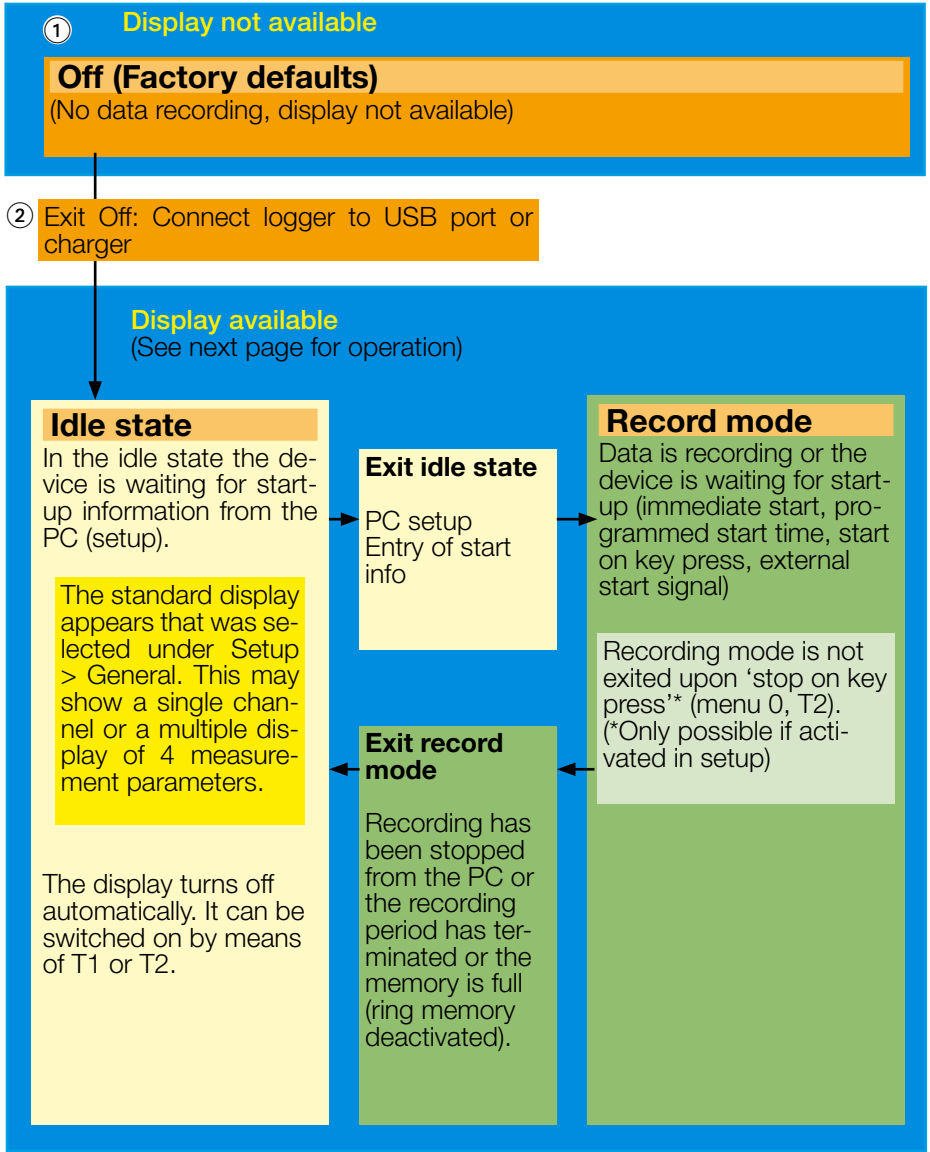
See also chapter „Logger display / Logger operation“ on page 12.

***Setup** is an LOG PC program (see below).

Logger display / Logger operation

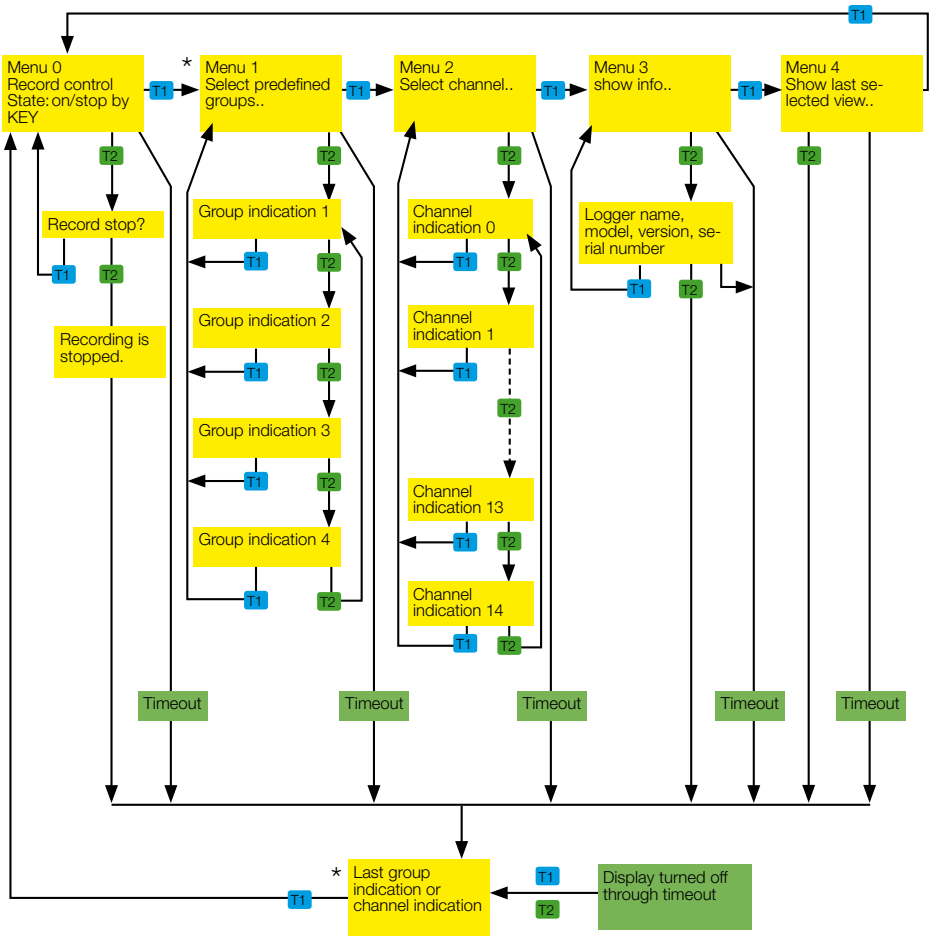
When the logger is turned off ① the display cannot be activated using the T1 or T2 keys. The display and keys are activated by connecting the logger to a USB port or charger ②. The display is operated using keys T1 and T2 (see the diagram "Display and operation").

Logger states





Logger display and logger operation




Instructions



* For defining group indication and channel indication see „Defining the logger display“ on page 39.

Indicator LED's

Information displayed	
LED	Meaning
 Red	Alarm limit reached
 Blue	Define the behaviour of the blue LED via Setup > Basic settings . See the section Setup, LED behaviour.

Meaning of the yellow lamp during charging	
LED	Meaning
 yellow continuously	Charging in progress
 yellow off	<ul style="list-style-type: none">• Fully charged• No connection to PC• PC turned off• Power supply not connected
 yellow flashes	Fully charged The battery is recharged for a short time, e.g. during an online measurement or data recording

Maintenance

User checks

- Check the logger before each use.
- Before using the logger check for visible signs of damage.
- Check the functions of the logger.
- Never use a logger that is damaged or not functioning perfectly. Never use damaged accessories.
- Ensure that the battery is sufficiently charged for the required period of use.

Should the logger not function perfectly or should damage become apparent send the unit to Rotronic for repair. Repairs may only be carried out by Rotronic or an authorised dealer. Defective or damaged components may only be replaced with manufacturer's original parts.

Cleaning



CAUTION

- Ensure that no fluids enter the logger's casing. Fluids will cause corrosion damage and short circuits.
- Never use corrosive or abrasive cleaning agents or polishes.
- Cleaning agents containing additives such as alcohol will cause the case to become matt and/or brittle.

- Clean the logger when necessary.
- Always disconnect the logger from the PC or the power supply before cleaning.
- Use a cleaning agent suitable for plastic or a cloth dampened with water and soap.

Charging the battery

Before first use:

The battery is not fully charged on delivery and should be charged before using the logger for the first time.

Charge the logger

- Before each use
- At least every six months

Procedure:

- Connect the logger to the power supply or via USB connection cable to the PC or an external USB mains adapter.

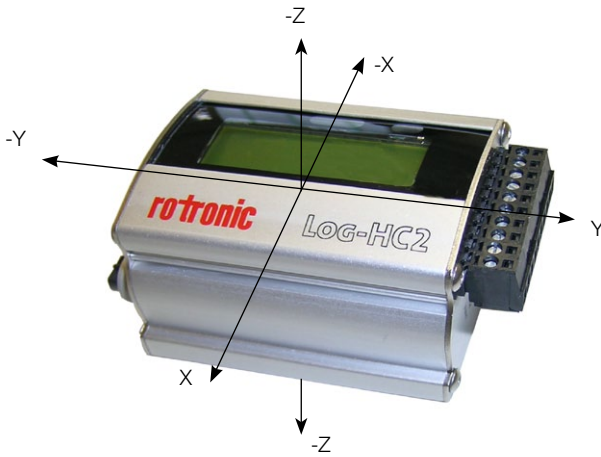
Notes:

- The meaning of the yellow warning light during charging is described on page 14.
- Charging an exhausted battery takes approx. 5 hours using the mains adapter. Charging is also possible via the USB port with the backlight turned off (approx. 28 hours).
- Recorded data is non-volatile and remains in the unit's memory even when the battery is exhausted.
- Never store the logger with a discharged battery. See ->18 (storage conditions).

Specifications

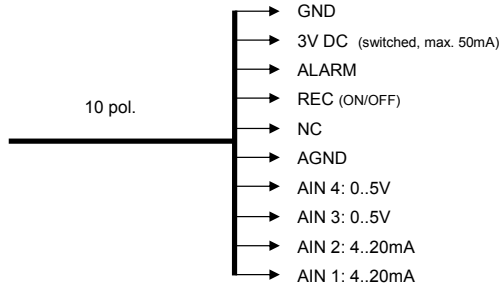
See data sheets

Defining the axes

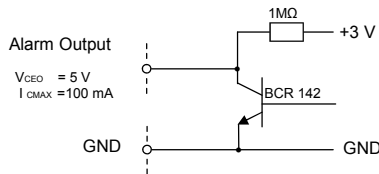


Terminal assignment (only LOG-HC2-RO1)

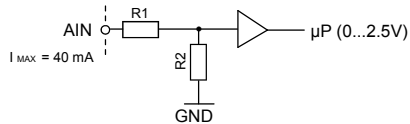
Pin Assignment:



Alarm: • Alarm Output

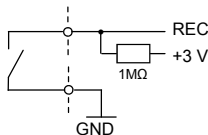


AIN1 ... AIN4: • Analog - Input (internal)



Input	R1	R2
4..20mA	0Ω	120kΩ
0..5V	510kΩ	470kΩ

REC Start/Stop: • Record Start/Stop



GND: • Ground

Operating, transport and storage conditions

- Protect the logger from excessive exposure to the sun and other sources of heat. Avoid heavy impacts.
- Do not place heavy objects on top of the logger.
- Only store the logger in a dry, dust-free environment.

Operating conditions:

Temperature: -20°C to +65 °C

Pressure: 500 mbar to 2500 mbar absolute

Humidity: 10-95% relative humidity, non-condensing
Avoid contact with water and humidity

Optimal storage and transportation conditions:

Temperature: 5°C bis 45 °C (ideal storage condition for the battery)

Humidity: 10-95% relative humidity, non-condensing
Avoid contact with water and humidity

Battery charge level: Never store the logger with a discharged battery.
The ideal charge level is a 2/3 charge
(see „Charging the battery“ on page 15)

Troubleshooting

Problem	Possible cause	Possible solution
The temperature increases continuously when the logger is connected to the mains adapter or the PC	The battery warms up because charging commences.	When making temperature measurements disconnect the logger from mains adapter or the PC.
The LOG PC programs do not recognise the connected logger	The COM port driver is not installed correctly.	Observe the manufacturer's installation instructions. http://www.ftdichip.com/

Packing list

- LOG-HC2-RO1, or LOG-HC2-P1
- CD including:
 - User manual
 - Logger PC software
- Logger USB connection cable
- Mains adapter

Options:

- Additional sensors
- Adapter for connecting further sensors

Disposal



Take the logger and the mains adapter to a municipal waste disposal centre or return it to Rotronic. The logger and the mains adapter must not be disposed of in normal domestic waste.

PC software

Setup

Setup

Reader

Reader

Viewer

Viewer

Online

Online

PC software

Overview

External processing of logger data is carried out using the LOG PC software programs Setup, Reader, Viewer and Online. The LOG PC programs can be used for all logger types.

The Setup enables the properties of the logger to be customised to user's requirements.

The Reader allows the user to transfer measurement parameters to a Windows PC. The Viewer is used to display data graphically or in table form or to export it as a text file (*.csv).

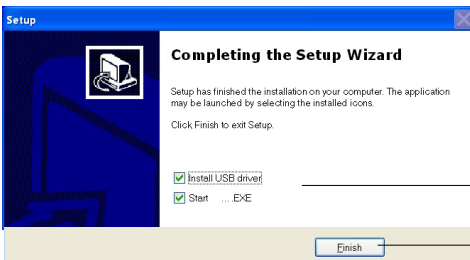
With the help of Online (and the built-in display) users can view measurement parameters and curves "live" on a PC.

Installation of the LOG PC software on a PC

For installation you will require Windows administrator rights.

Insert the CD containing the LOG PC software into the computer's CD-ROM drive. The installation procedure starts automatically*.

Completing installation



Initial installation: Select **Install USB driver**.

Click on **Finish**.

The logger symbol appears on screen.

If the PC is not set up for automatic installation, proceed as follows:

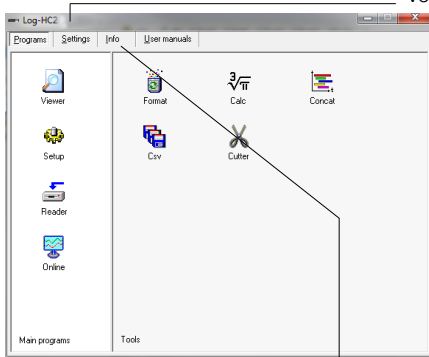
1. Click **Start > Run**
2. Click **Find > Look in:** (set to CD drive).
3. Select the file **Install_LOG_HC2.exe** and **Open**.
4. In the **Run** dialog box click **OK**.
5. The installation process will begin.
6. Follow the instructions and select: **Run LOG-program** now.
7. During the initial installation select **Install USB driver**. See above, **Completing installation**.

* The program "Inno Setup" for installing the logger PC programs was written by Jordan Russell (www.jrssoftware.org, copyright Jordan Russell).

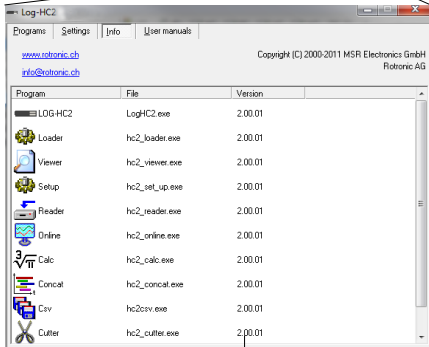
Starting the logger Software

The logger software may be started by clicking on the logger symbol or via **Start > Programs > LOG_HC2 X.XX.XX** (folder) > **LOG_HC2 X.XX.XX**. The logger program window appears:

Version number of CD



Logger program window



Version numbers of LOG PC programs

Setup

Reader

Viewer

Online

Uninstalling

The software is uninstalled via the computer's operating system (Programs > LOG_HC2 > Uninstall LOG_HC2).

System Requirements

- Windows 2000 / XP / Vista / 7
- USB port

Setup

Reader

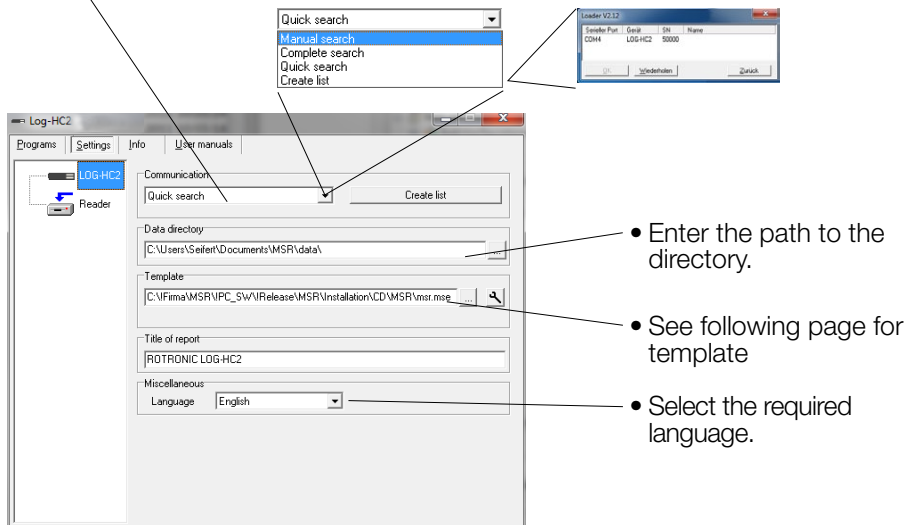
Viewer

Online

Preparation

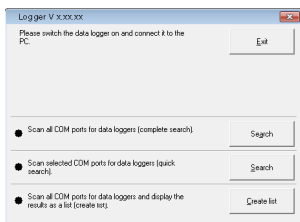
Before using the LOG PC programs **Setup**, **Reader** and **Online**, the following preparations must be completed:

- Use the USB connecting cable to connect the logger with the PC.
- Before first use: Using logger symbol open the logger program window, select **Settings > Logger**.
- Select the rule by which the **Setup**, **Reader** and **Online** programs are to search for the required logger*.



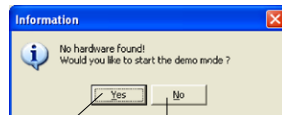
Logger program window

* One of the following windows will appear if a connection to a logger cannot be established using the current rule.



Loader Dialog

During Setup:



Starts the Loader dialog (see screenshot left)

Starts the Setup demo mode

Setup
Reader
Viewer
Online





Template

The template, selected via **Setting > LOG-HC2** (*.mse), defines which sensors the **Reader** reads out as standard or are displayed in **Online**. The template sets the colour of the trace, the positioning of its axis (left, right) and gives the sensors a name ("HUM, T1" is required to be displayed as "outside temperature", for example). Templates can be produced on the basis of examples contained in **Viewer** (->34).

Example

The temperature curves are required to be blue and oriented on the right hand axis in all display modes.

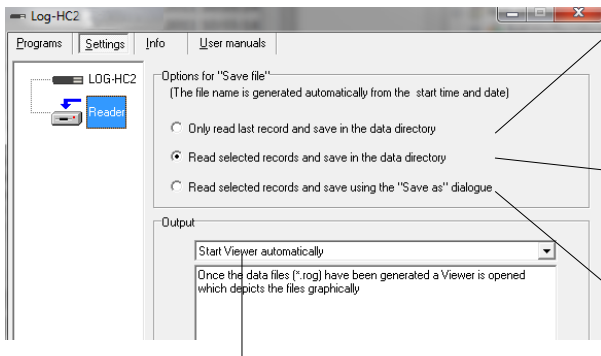
1. Assign right hand axis and blue colour shades to temperature in **Viewer**.
2. Save as template (Bluetemp.mse).
3. Generate new templates for **Reader** and **Online**: Select logger program window, **Settings LOG-HC2 > Template** , enter new name and path (Temperature.mse), then **Open**.
4. Open the still blank template (Temperature.mse) using .
5. **Import** the template that was created in **Viewer** (Bluetemp.mse). Select the required sensors (tick in checkbox) in the **Module** column and confirm with **Accept**.
6. Edit the displayed list: First select a sensor in the Module column and then choose **Edit**.
7. Change the name "HUM, T1" to "Outside temperature", and Accept.
8. Continue to make the necessary adjustments and confirm them with **Accept**.

Pre-adjustments - Reader

Enter the required options for the Reader** via Settings > Reader.

**Data records are transferred from the logger to a PC using the Reader.

Once data transfer is complete the Reader creates a data record (*.msr) from each logged record, names it and saves it in the corresponding directory. The bottom-most option allows the user to alter the suggested filename and location.



Transfer only the most recent data record logged with the logger to the PC.

User defines which records are transferred to the PC

User defines which records are transferred to the PC, their filenames and their location.

Once the data has been transferred to the PC various options are available to the user. Details may be found in the text window.

Example: "Automatically generate a text file"

In addition to the logger format file, the **Reader** creates a text file (*.csv), which can be opened with programs such as e.g. Microsoft Word or Excel.

Completion of the preparatory measures

Upon exiting Settings the PC saves the settings that were last entered.

Once entry of the settings is complete, select Programs and start the required program.

Note: The following instructions assume that the preparations for using the LOG PC programs have been completed.

Setup

Reader

Viewer

Online

Setup

Setup is used to select the sensors for which the logger is required to save measurement parameters, to enter the measurement frequency and to set the behaviour of the logger's memory. In **Setup** you can also define the start time for data recording and stop data recording.

The following subjects are dealt with in the Setup chapter:

Basic settings	29
Prediction	30
Reducing the volume of data	31
Conditional recording of measurement parameters (limits)	31
Setting the alarm limit	31
LED behaviour	32
Transferring basic settings to several loggers	42
User settings	33
Adjusting the channel properties.	34
Changing the basic unit	36
Calibrating the sensors	37
Changing the display unit	38
Defining the logger display.	39
Formatting the memory	39

Basic settings

This page describes the most commonly used settings – the Basic settings. Information on further settings can be found on the following pages.

- Complete the preparations (->33).
- Start Setup (Setup symbol).
- Edit the **Basic settings** according to your requirements.
- Transfer the new configuration and the start conditions to the **logger** with **Write basic settings**.

Setup

The screenshot shows the Log-HC2 software interface with the following callouts and annotations:

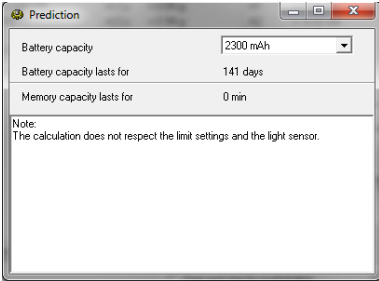
- Name of the logger ->33**: Points to the 'LOG-HC2' text in the General tab.
- Currently no data is being recorded (inactive) (active: data recording in progress)**: Points to the 'State: inactive' text.
- Exit setup**: Points to the 'Exit' button.
- Read the information and measurement parameters**: Points to the 'Read' button.
- Freezes the selected options in the Basic settings and Limits tabs so that these can be transferred to other logger units ->32**: Points to the 'Freeze' checkbox.
- Enter the main storage rates**: Points to the 'Main storage rate' section with callouts **->40** and **->39**.
- Conditional recording of measurement parameters ->31**: Points to the 'Record control' section with callouts **->33** and **->33**.
- Stop data recording**: Points to the 'Stop record' button.
- Overwrite oldest measurement parameters when memory is full**: Points to the 'Write basic settings' button.
- Transfers the configuration, the start conditions and the PC time to the logger**: Points to the 'Write basic settings' button.
- Blue LED flashes during data recording (LED ->32)**: Points to the 'blue LED flashes with t1' checkbox.
- Define the sensors from which the logger should record data, together with the storage rate.**: Points to the 'Sensors' section with callouts **->30** and **->30**.

The **50Hz (3200 Hz)** function is only available for the acceleration sensors (ACC).

50Hz (3200 Hz)

Acceleration values are measured at 3,200 Hz and saved at a frequency of approx. 50 Hz following digital filtration. Energy consumption increases for **50Hz (3200 Hz)** measurements.

Prediction



The maximum amount of data that can be recorded is influenced by:

- The number of sensors
- The measurement rate
- The battery capacity

With each click on **Prediction (Basic settings)** the program generates an approximate prediction using the selected basic settings.

Note: The Limit settings are not taken into account here.

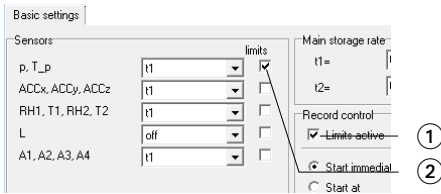
Reducing the volume of data

When making extensive recordings it is recommended that all sensors that are not required be “turned off”. This prevents unrequired measurement parameters from being saved.

- Under **Basic settings** turn “off” all unused sensor groups (see next section).
- To turn off individual sensors within one sensor group proceed as follows: Set the cut-in condition such that they are not activated during the planned recording (e.g. $> 200\text{ }^{\circ}\text{C}$) (see next section).

Conditional recording of measurement parameters (limits)

If for example, you require only to record temperatures above $5\text{ }^{\circ}\text{C}$ and less than $20\text{ }^{\circ}\text{C}$, use the following procedure:



- Activate **Limits active** ① and the corresponding temperature sensor ②.
- The Limits tab opens.

Channel	Record limit	Alarm limit	Limit L1	Limit L2	Unit
0	inactive	inactive	0.0	0.0	rtbar
T _p	>L1 and <L2	inactive	5.0	20.0	°C
ACCx	inactive	inactive	0.00	0.00	g
ACCy	inactive	inactive	0.00	0.00	g
ACCz	inactive	inactive	0.00	0.00	g
RH1	<L1 or >L2 (Shock)	inactive	0.0	0.0	%rh
T1	>L1, stop <L2	inactive	0.0	0.0	°C
RH2	inactive	inactive	0.0	0.0	%rh
T2	inactive	inactive	0.0	0.0	°C
L	inactive	inactive	0	0	lux

- In the columns **Record Limit**, **Limit L1** and **Limit L2** enter the cut-in conditions for the sensor.

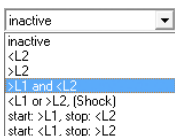
The logger only records measurement parameters from the sensor T(p) above $5\text{ }^{\circ}\text{C}$ and less than $20\text{ }^{\circ}\text{C}$

- Return to the **Basic settings** with and click **Write basic settings**. The limits will only be transferred to the logger with **Write basic settings**.

Setting the alarm limit

The logger can display an alarm if a certain measurement parameter drops below or exceeds a certain value. When the alarm condition occurs the red LED flashes once per second until the data recording is stopped.

Inputting the alarm condition is carried out in the same way as setting the cut-in conditions (see section Conditional recording of measurement parameters).



- In the Alarm Limit, **Limit L1** and **Limit L2** columns enter the alarm conditions. The alarm limits can be displayed in **Viewer**.

LED behaviour

The behaviour of the blue LED is defined via **Setup > Basic settings**.

		Options during record <input checked="" type="checkbox"/> blue LED flashes with t1	Options during record <input type="checkbox"/> blue LED flashes with t1
Situation		Behaviour of the blue LED	
Start time has been transferred to the logger	First 5 seconds	Double-flashes 5 times at 1-second intervals	
	Waiting for start	Double-flashes at 5-second intervals	
Data recording in progress	First 5 seconds	Flashes 5 times at 1-second intervals	
	After 5 seconds	LED flashes with main storage rate t1	LED does not flash

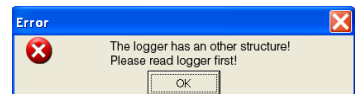
Transferring basic settings to several loggers

Use the following procedure to transfer basic settings that have already been input to several loggers:

- Start **Setup**.
- Connect the logger to the PC. (If several loggers are connected to the PC, select the COM port of the required logger)
- Enter the required values in the **Basic settings** tab.
- Set the cut-in and alarm conditions in the Limits tab.
- Use **Write basic settings** to transfer the basic settings to the logger.
- Disconnect the logger just configured and connect the next logger to the PC.
- Select the new logger via COM Port.
- **Caution!** If you wish to import the information and measurement parameters of the newly connected logger, you must first select the option **Freeze** ->24, so that the settings in the Basic settings and Limits tabs are not overwritten!
- Transfer the basic settings to the logger with **Write basic settings**.

Note:

- It is also possible to configure differently equipped loggers with a single basic setting. One logger may for example, not be equipped with any analogue inputs. The setup program then simply does not write any data to the settings saved in the logger for those analogue inputs.
- If a connected logger deviates too greatly from the first logger, this message appears:



User settings

To display the configuration saved in the logger select the Basic settings tab ① and click **Read basic settings**. The settings are now displayed in the **User settings** tab.



CAUTION

The changes made in the **User settings** tab and its sub-menus will only be transferred to the logger after clicking **Write user settings** ②.

Check the checkbox in order to enter/change the date, notes and „Calibrating the sensors“ on page 34.

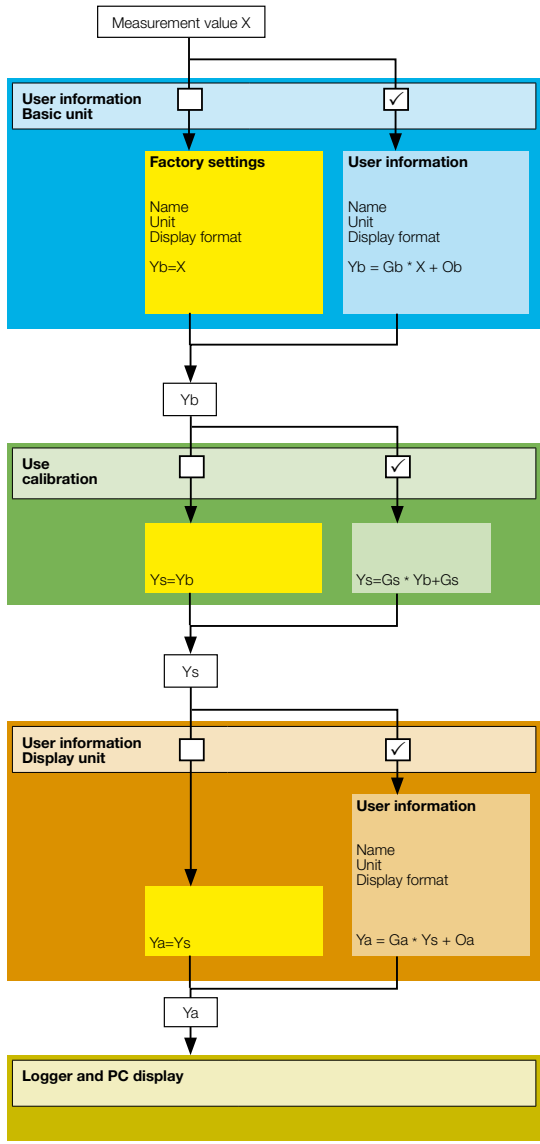
Only for analogue inputs: Input of a "warm-up time" to warm-up analogue sensors before making measurements. A start-up time of zero = the sensor voltage is always ON.

Adjusting the channel properties

Select the tab **Channels** ③ in order to change the name, unit, display format and calibration of a channel.

The following options are available (see following schematic):

- **Changing the basic unit** (see page 36)
Changing the factory settings (name, unit, display format).
This information is used for calibration purposes among others.
- **Calibration** (see page 37)
Correction of the displayed values.
- **Changing the display unit** (see page 38)
Change the factory settings or the information entered under **Changing the basic unit**.
This information is used for the logger and PC display.



X Measurement value
 Gb Base amplification
 Ob Zero reference point
 Yb Reference value

Yb Reference value
 Px Calibration points (P1 and P2)
 $GS = (P2_{Setpoint\ value} - P1_{Setpoint\ value}) / (P2_{Actual\ value} - P1_{Actual\ value})$
 $OS = P1_{Setpoint\ value} - GS * P1_{Actual\ value}$
 Ys Calibrated value

Ys Calibrated value
 Ga Display gain
 Oa Zero point display
 Ya Display value

Change basic unit

Change basic parameter is used to adapt the factory settings (name, unit, display format) to your requirements. These details are used among others, for **calibration** purposes.

Select the desired channel (e.g. analogue input A2) and then click **Changing the basic unit**. Enter your adjustments ⑤ (e.g. Mbar instead of Volt).

To enter the conversion factor (e.g. Volts to Mbar) the following options are available:

- Enter the **amplification** and the **zero point**
- Using the calculation assistant ⑥ enter the values for points P1 and P2 ⑦. The program will then calculate the amplification and the zero point.

Activate **Apply user information** by checking the checkbox ④ and then click **OK**. Transfer the changes to the logger by clicking **Write user settings**.

Note: Should you wish to use a different display unit to that used for calibration, then please use the function **Change display parameter**.

The screenshot shows the 'User settings' window with the 'Channels' tab selected. A table lists channels 1 through 14 with columns for Channel, Name, Unit, Format, modified, and Calibration. Channel 12 (A2) is highlighted in blue. A callout box ⑤ points to the 'modified' column for channel 12, which contains 'yes'. To the right, the 'Change basic parameter of channel 12' dialog is open, showing factory settings for Name (A2), Unit (V), and Display format (0.000). Below this, the 'Use information' section has Name (A2b), Unit (mbar), Gain (475), Offset (425), and Display format (0). A checkbox ④ labeled 'Apply user information' is checked. A callout box ⑥ points to the 'Calculation assistant' dialog, which has fields for Point P1 (Target value: 50, Actual value: 1) and Point P2 (Target value: 1000, Actual value: 3). A callout box ⑦ points to the 'Actual value' field for Point P2.

Max. 4 characters

Changes have been made to this channel.

Channel	Name	Unit	Format	modified	Calibration
1	p	mbar	0.0	no	no
2	T.P	°C	0.0	no	no
3	ACCx	g	0.00	no	no
4	ACCy	g	0.00	no	no
5	ACCz	g	0.00	no	no
6	RH1	%RH	0.0	no	not change...
7	T1	°C	0.0	no	not change...
8	RH2	%RH	0.0	no	not change...
9	T2	°C	0.0	no	not change...
10	L	kLux	0.00	no	no
11	A1	V	0.00	no	no
12	A2	V	0.000	yes	no
13	A3	V	0.00	no	no
14	A4	V	0.000	no	no

11	A1	V	0.000	
12	A2b	mbar	0	
13	A3	V	0.000	

Resetting channel properties to the factory settings:

Uncheck checkbox ④ (**Apply user information**) and transfer the changes to the logger by clicking **Write user settings**.

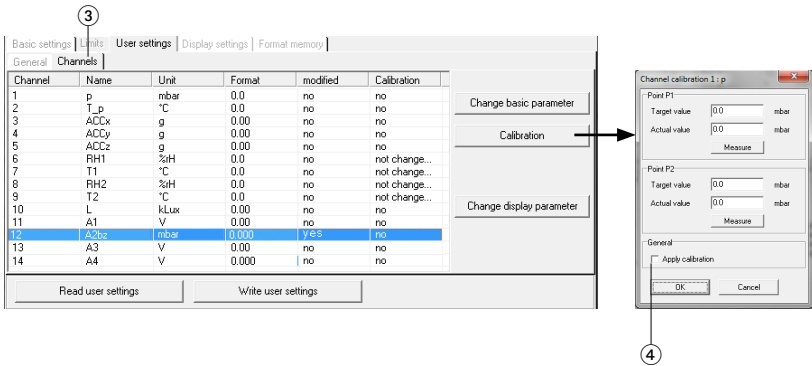
Calibrating the sensors

The sensors and analogue inputs can be calibrated using a 2 point calibration process. Those sensors marked “not changeable” in the **Calibration** column cannot be calibrated.



Calibration and adjustment of the HygroClip2 probe is carried out using the ROTRONIC HW4 software.

Select **User settings** and at the bottom click on **Read user settings**. Under **General > Calibration**, check the **Make calibration changeable** checkbox. Choose **Channel ③**. Select a channel and then click **Calibration**.

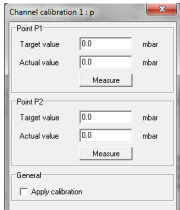


Calibration can be carried out a) manually or b) by measuring the signal and subsequently entering the target value.

a) Manual calibration

First enter the actual value and then the associated target value for points P1 and P2. Activate the completed calibration by checking the checkbox ④. Confirm your selection with **OK**.

b) Calibration using the measurement function



Apply the desired signal for point P1 and click **Measure**. The measured actual value is displayed. Enter the associated target value for point P1. Repeat this procedure for P2. Activate the completed calibration by checking the checkbox ④. Confirm your selection with **OK**.

Activate the completed calibration by checking the checkbox ④ and then click **OK**. If necessary, calibrate further sensors (channels). With **Write user settings** ② you can simultaneously transfer all of the completed calibrations to the logger.

Resetting the calibration to the factory defaults

Uncheck the checkbox ④ (Apply calibration) and transfer the change to the logger by clicking **Write user settings**.



CAUTION

If, following calibration, changes are made via “Changing the basic unit“ on page 36, the performed calibration will be lost.

Changing the display parameter

Changes that are made with **Change display parameter** have no effect on the settings made with **Change basic parameter**. This allows you to always perform calibration using the units selected with **Change basic parameter**.

Select the desired channel (e.g. analogue input A2) and then click **Change display parameter**. Enter your adjustments ⑤ (e.g. psi instead of Mbar).

To enter the conversion factor (e.g. Mbar to psi) the following options are available:

- Enter the **amplification** and the **zero point**
- Using the calculation assistant ⑥ enter the values for points P1 and P2 ⑦. The program will then calculate the amplification and the zero point.

Activate “Apply user information” by checking the checkbox ④ and then click **OK**. Transfer the changes to the logger by clicking **Write user settings**.

Resetting the properties to the factory settings:

Uncheck checkbox ④ (**Apply user information**) and transfer the changes to the logger by clicking **Write user settings** ②.

③

Channel	Name	Unit	Format	modified	Calibration
1	p	mbar	0.0	yes	no
2	T_p	°C	0.0	no	no
3	ACCx	g	0.00	no	no
4	ACCy	g	0.00	no	no
5	ACCz	g	0.00	no	no
6	RH1	%H	0.0	no	not change...
7	T1	°C	0.0	no	not change...
8	RH2	%H	0.0	no	not change...
9	T2	°C	0.0	no	not change...
10	L	kLux	0.00	no	no
11	A1	V	0.00	no	no
12	A2bz	mbar	0.000	yes	no
13	A3	V	0.00	no	no
14	A4	V	0.000	no	no

Max. 4 characters

⑤

④

⑥

⑦

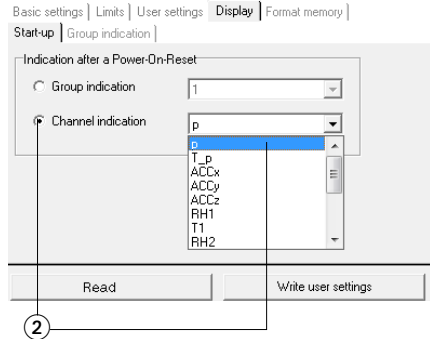
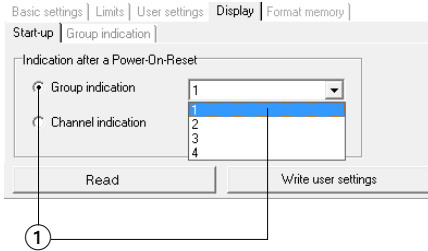
⑥

13	A1	V	0.000	no	no
14	A2bz	psi	0	yes	yes
15	A3	V	0.000	no	no

Defining the logger display

Select **Display** and then click **Read user settings** at the bottom.

Define what the device should display following a power-on-reset under **Start-up**. A group of measurement parameters ① defined under **Group indication**, or a single channel ② can be displayed.

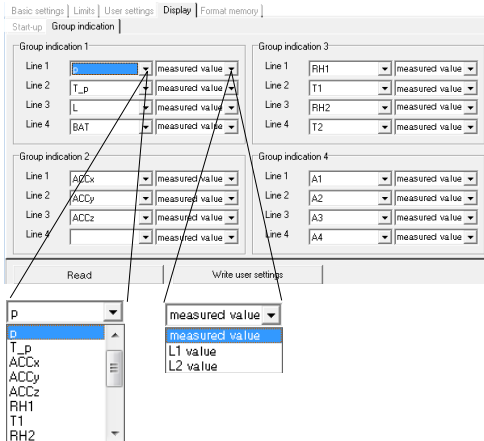


Setup

Transfer the desired settings to the device by clicking **Write user settings**.

Defining the group indication

Define which channels should be displayed together in one group indication under **Display > Group indication**. 4 group indications each with 4 channels can be shown. For each channel, the measurement parameter, limit L1 or limit L2 can be displayed.



Transfer the desired settings to the device by clicking **Write user settings**.

Open group indication on the device: See „Logger display and logger operation“ on page 13.

Formatting the memory

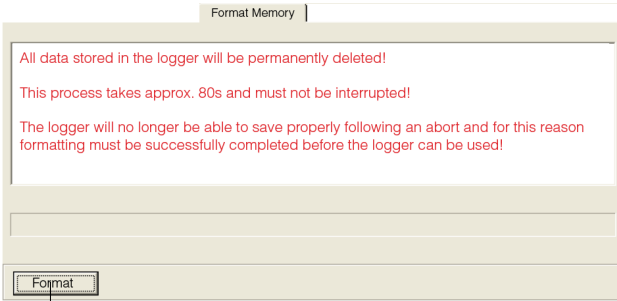


CAUTION

Formtting will erase all measurement parameters saved in the logger!

Formatting is used to delete all the measurement parameters saved in the logger.

Formatting the logger is carried out from the **Format memory** tab.




Deletes all measurement parameters saved in the logger

Reader

With the **Reader** users can selectively transfer data records logged with the logger to a PC. It does however free measurement records that have already been read out for overwriting.

Transferring data records to a PC

- Complete the preparations (->24) aus.
- Start the **Reader** (Reader symbol)

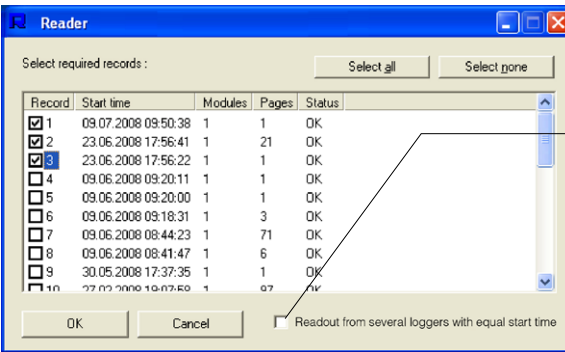

CAUTION

Once data transfer has started (Start) all data records saved on the logger can be overwritten if required, even if the circular buffer is deactivated in Setup.

- Begin data transfer with Start.

The options selected under **Settings > Reader** (->26) influence the next steps:

- Under the option **Read selected records** the following data entry dialog box appears:



- Select the data records to be transferred.
- Click **OK**.
- Data records having the same start time are written together to one file.

- With the option **Read selected records and save with "Save dialog as"** under **Settings > Reader** (->26) the filenames and locations suggested by **Reader** can be overwritten.

Once the data records have been saved on the PC a list of files created appears.

Files generated:

C:\Programme\... \Data\ ... 20025_060726_143917_7....

C:\Programme\... \Data\ ... 20025_060726_130000_3....

Serial number

Date (YYMMDD)

Recording start time (HHMMSS)

Copy number

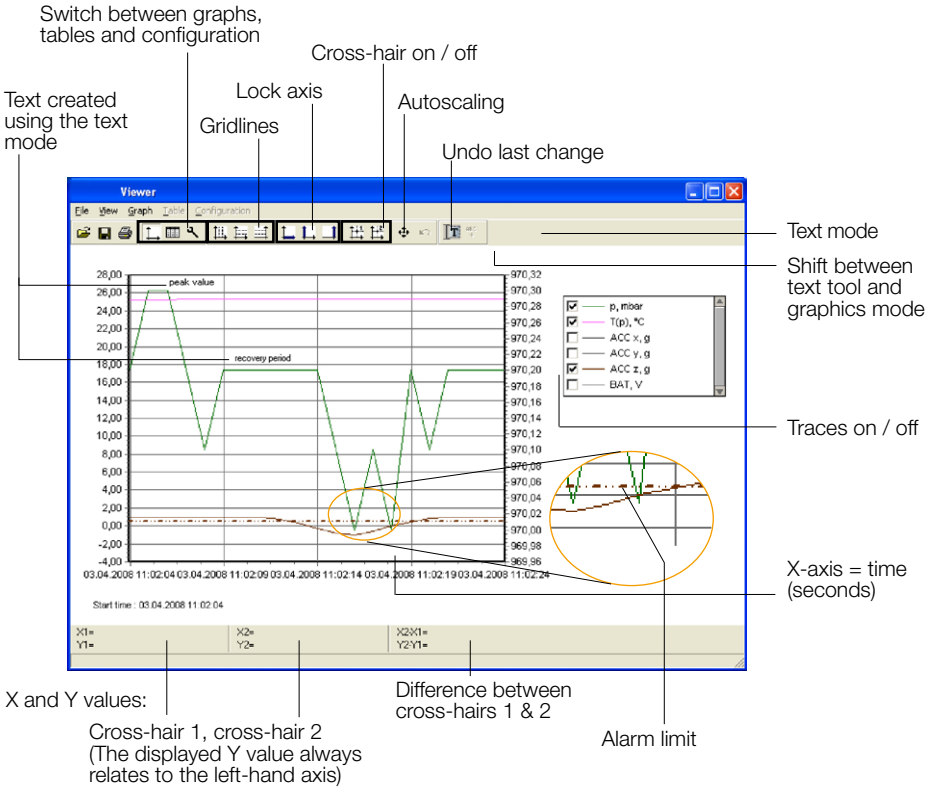
— Filenames allocated by the **Reader**

Reader

Viewer

Records created in **Reader** or **Online** may be viewed and edited on a PC with the **Viewer**. The measurement parameters may be displayed either in graph or in table form.

- Start the **Viewer** (Viewer symbol).
- Open a record (*.msr) via **File > Open**.



Viewer

Viewer			
File View Graph Table Configuration			
Time	300045, p, mbar	300045, T(p), °C	300046, ACC z, g
2	970	25,2999992370605	0,0475125670637402
3	970,200012207031	25,2999992370605	0,409510612487793
4	970,039575585938	25,2999992370605	0,828550338745117
5	970,200012207031	25,2999992370605	0,999975681304932
6	970,200012207031	25,2999992370605	0,999975681304932
7	970,200012207031	25,2999992370605	0,961881160736084
8	970,200012207031	25,2999992370605	0,980928421020508

Displayed as a table

Alarm limit exceed

Move traces

With right mouse button held down

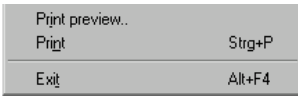
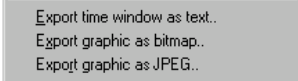
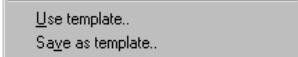
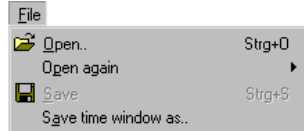
Enlarge section

Mark the required section with the left mouse button held down. See also **Graphics > Fixed axis**).



Cross-hair

Move axis:
Move centre:

Grab the axis, move with left mouse button.
Grab the centre, move with left mouse button.




File

The **File** menu is used to **Open** records , to Reopen (**Open again**) the most recently used records and to **Save** the currently open record as displayed .

With **Save time window as** the measurement parameters of the displayed time window are saved. (The measurement parameters of the hidden traces are also saved). For further options see **Cutter** ->44.

Templates help to standardise the displays, enable easy repetition when reselecting the same sensors and the same printing format.

Creating templates: Adjust the display with **Graph and Configuration**  and save via **File > Save as template** (file type: *.mse).

Apply a template to the displayed record: **File > Use template** then select the required template (*.mse).

Export Time window as text exports the measurement parameters of the displayed time window in *.csv format. The measurement parameters of the hidden traces are also exported.

The trace can be exported in **Bitmap** (*. bmp) or as **JPEG** forma.

Print preview opens a preview of the trace/graph.

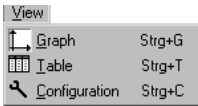
Print  opens the print dialog box.

Exit closes the **Viewer**. If changes were made the user is asked whether the changes should be saved.

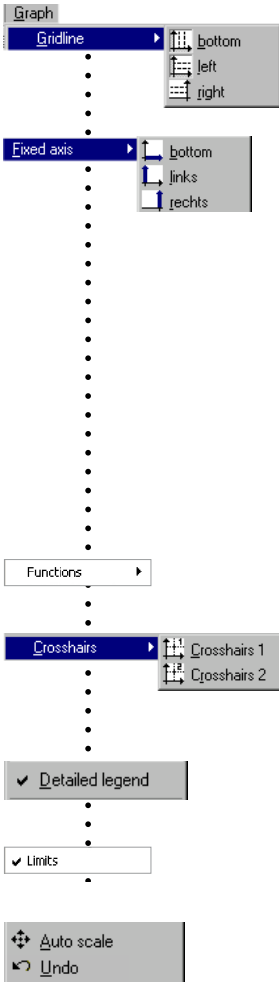
Note:

The program saves changes as "Template" (*. mse). The template is automatically saved in the record's directory. Template (*. mse) and record (*. msr) have the same name.

Upon **Opening** a record the **Viewer** searches for the template associated with that record. Should the template not be located in the same directory as the record then the standard format will be opened.



View, Graph ,Table, Configuration




Graph

Gridlines can be shown for each axis (bottom, left, right).

Fixed axis simplifies the amount of detail shown within a time window or range of values.

- Select the required section with the left mouse button held down. The section is displayed enlarged.
- For closer viewing, lock the time window (L) or range of values to the left or right axis (L/ R). Several axes can be locked.
- With the left mouse button held down, select the required detail. The enlargement is displayed without altering the time segment or range of values of the locked axes.

A further click releases the lock.


Auto scal  clears all locked axes.

Calculation functions

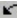


Using the two **Crosshairs** values can be measured on the X and Y traces. X and Y differences can be evaluated with the second cross-hair. The Y values displayed are always associated with the left axis.

With **Detailed legend** traces can be turned on and off in the list of sensors.

If available: Display of the alarm limits (see ->42).

The complete record is displayed by selecting **Auto scale** .

Auto scale  clears all locked axes.

Undo  undoes the last enlargement. As long as the **Configuration** dialog  is not quitted, **Undo**  allows the last changes made to the displayed configuration screen to be undone.

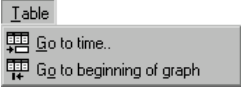


Table (Tabelle)

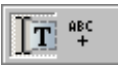
Go to time allows users to jump straight to the line in the table with the required time.

Jump to beginning of graph causes the table to jump to the first measurement values displayed in the graph.



Configuration

As long as the **Configuration** dialog is not quit- ted, **Undo** allows the last changes made to the configuration screen to be undone.

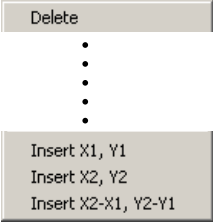


Text mode

Using the text mode you can insert texts at any place. By clicking on you can activate and deactivate the text mode.

Insert text:

- Click on . The viewer displays "Text 1" in the upper left corner.
- Drag the text field to the desired place.
- Double click on the text field and enter your required text.



Delete text:

- Click with the right mouse button on the text field and select **Delete**.

Text field with X and Y values:

- place the crosshairs on your chosen position to adopt the X and Y values you would like to use in the text field.
- Create a text field (see above) and click on the right mouse button. Select the desired representation.

 Configuration **Strg+C**

General | Curves | Time axis X | left Y axis | right Y axis | Crosshairs

General


Curves


Time axis X

left Y axis

right Y axis


Crosshairs

Configuration  allows the display method of the measurement parameters to be set with the help of the configuration screens.


Entering title and footer information is achieved via **Configuration**  > **General**.


The associated sensor name, assignment to the left or right axis, the colour, line weight and style can be set for each curve.

Axis > **inactive** allows the graph curve to be shown or hidden as required.




CAUTION


Depiction of the curves using dots (**Configuration**  > **Curves** > **Dot: Yes**) requires more computing power, possibly leading to problems.

Using **Configuration**  > **Time axis X**, the time axis can be annotated, the time segment to be displayed can be set, and the Increment for the lettering and ruled lines, together with the **Format** for numbers can be entered.

Automatic axis annotation with an **Increment** of 0 (zero).

The number **Format** for the displayed X and Y values is entered via **Configuration**  > **Crosshairs**. The displayed Y value always relates to the left axis.

Undo the last changes

As long as **Configuration** is not quitted, users can undo the last changes made to the displayed configuration screen with .

Quit **Configuration** 

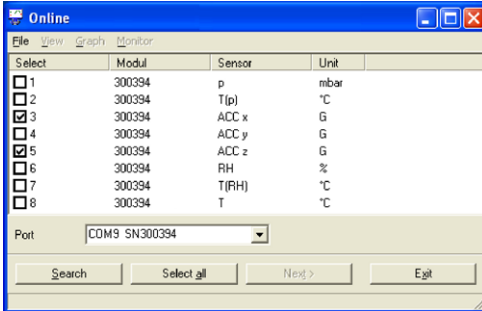
Quit **Configuration**  via **Graph**  or **Table** . Upon quitting, the **Viewer** saves the configuration.

Online

Online allows users to view the progress of the measurement parameters directly on-screen.

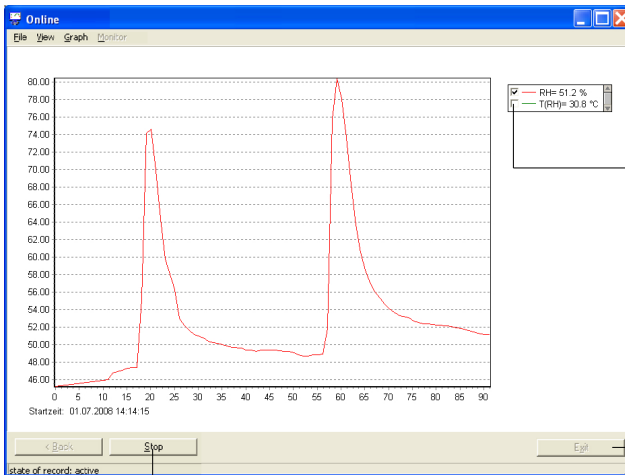
Procedure:

- Complete the preparations ->24.
- Start **Online** (Online symbol)



- Select the sensors that you wish to display.
- Click on **Next**.

- Online displays the measurement parameters graphically and numerically.



Turn trace on and off

Exits **Online**

Stop: A display
Continue: Continue

The logger is currently recording measurement parameters

File

Use template..
 Save as template..
 Save as..



Save as..

For recurring applications in **Online**, **Templates** assist in selecting the required sensors and adjusting the display to suit.

Create template: Start **Online** and select the required sensors. Select **Next**>. Use **Graph > Properties**, **Graph > Grid line**, **Graph > Legend** and **Graph > Start time to change the way the curve is displayed**. Via **Back** return to the trace display. Interrupt recording with **Stop**. Save the template via **File > Save as template**.

Apply the template to Online: **File > Use template** and select the required template (*.mse).

Once recording has finished by clicking on **Stop**, the recorded measurement parameters can be saved via **File > Save as**.

View

Graph
 Monitor

Unit	Monitor
p	964.2 mbar
T(p)	30.7 °C
ACC x	0.302 g
ACC y	-0.181 g
ACC z	0.961 g
RH	49.1 %
T(RH)	30.5 °C
T	29.2 °C

In the menu **View** the measurement parameters can be displayed as curves with **Graph** or as numerical values with **Monitor**. The font displayed on the monitor can be selected via the menu **Monitor > Font**.

Graph

clear
 .
 Properties
 Grid line ▶
 ✓ legend
 ✓ start time
 .
 Refresh rate ▶
 .
 .
 .
 Time window ▶

Once recording has finished by clicking on **Stop**, the recorded measurement parameters and traces can be deleted via **Clear**.

The display can be changed via **Properties**, **Gridlines**, **Legend** and **Start time**.

Select the frequency (**Refresh rate**) with which measurement parameters are to be transferred to the PC.

In the **Time window** you can define the time period represented by the time axis.

Utility programs

CSV

Cutter

Calc

Concat

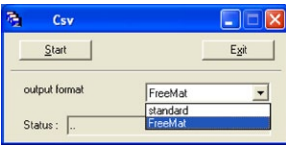


CSV

The **CSV** utility creates text files (*.csv or *.fmc) from data records (*.msr). Files saved in *.csv format can subsequently be opened and edited in a word processing or spreadsheet application. The *.fmc files can be transferred to FreeMat1.

Creating a text file

- Start CSV (**Logger Program window** > Tools > Csv).
- Select the output format (standard *.csv or FreeMat *.fmc)
- Click on **Start** and select the data record from which the text file is to be created. **CSV** creates a text file (*.csv) and saves it in the corresponding directory for that data record. Text file (*.csv) and data record (*.msr) have the same name.



Note on creating *.csv files: If a template (*.mse) exists for the data record in question, **CSV** takes this into account when creating the text file (*.csv).

Example: Opening a CSV text file with Excel

- Start the word-processing or spreadsheet program.
- Open the CSV file via **File > Open**.
- Under **File type**, select **Text Files**

	A	B	C	D	E	F
1	*CREATOR					
2_cutters.exe [V1.20]				
3_2csv.exe [V1.26]				
4	*					
5	Name	Pilatus				
6	SN	20025				
7	Revision	0				
8						
9						
10	*STARTTIME					
11		31.07.2006 17:14:00				
12						
13	*MODUL					
14	NAME	20025	20025	20025	20025	20025
15	ID	[C102 V1.22]	[C102 V1.22]	[C102 V1.22]	[C102 V1.22]	[C102 V1.22]
16						
17	*TIMEDELAY					
18	s	0.3	0.3	0.3	0.3	0.3
19						
20	*CHANNEL					
21	TIME	T	RH	T(RH)	ACC_x	ACC_y
22						
23	*UNIT					
24	s	°C	%	°C	g	g
25						
26	*DATA					
27	31.07.2006 11:	26.875	48.8699989	26.3799992	-1.01199996	0.27599999
28	31.07.2006 11:	26.875	48.9300003	26.3899994	-1.01199996	0.27599999
29	31.07.2006 11:	26.875	48.9300003	26.3899994	-1.01199996	0.26800001
30	31.07.2006 11:	26.875	48.9700012	26.4099996	-1.01199996	0.26800001

- Data source
- Logger name
- Serial number
- Logger revision number
- Record start time: Date (Day.Month.Year) and time of day (Hr:Min:Sec)
- Modules for which measurement parameters were recorded
- Module version
- Time difference between PC time and Logger time (readout time)
- Channel and sensor names
- Unit for the displayed value
- Measured parameters (data) in chronological order
- Time of recording

Excel file with measured data

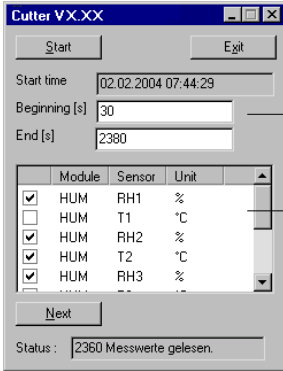
¹ Further details on FreeMat can be found in the section **FreeMat** ->59

Cutter

The **Cutter** utility creates an extract from a data record (*.msr).

Creating an extract from a data record

- Start the **Cutter** utility (**Logger Program window > Tool > Cutter**)



- Click on **Start** and select the data record from which the extract is to be created.
- Select the time window. **Beginning / End**.
- Select the sensors for which the measurement parameters are to be exported to a new data record and click **Next**.
- Enter the name and directory for the new data record. Click on **Save**.

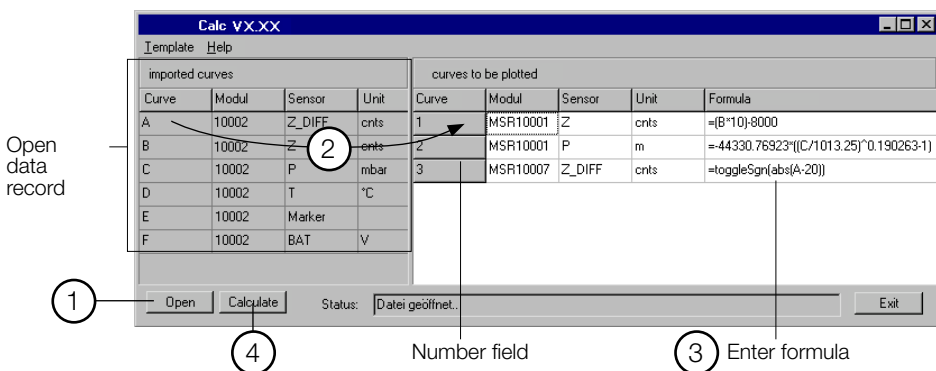
Calc

With **Calc** curves from existing data records can be linked to each other using formulae and saved as a data record (*.msr). The saved data record can be displayed and processed in the form of curves or as a table using the Viewer. Templates simplify the processing of recurring tasks.

Note: For making comprehensive calculations the FreeMat math software is available (see ->59).

Computing new curves

- Start **Calc** (**Logger program window > Tools > Calc**)



- 1 Open data record (data origin)**
Click on **Open** to open the data record for which you want to perform calculations on the curve. It is possible to open multiple data records.
- 2 Create new curves**
From **imported curves** select the curve that you want to use for your calculations and drag it – with the left mouse button pressed – to the right into the field for curves to be plotted. Repeat this procedure until the required number of curves is shown on the right.
- 3 Enter formula**
Enter the formula to be used for the new curve into the **Formula** column. For this, use the capital letters on the left.
Example for a subtraction: A-C

You will find a list of the available functions at the end of this section or under **Help**.

Modify the text for the new curves

The entries in the columns **Module**, **Sensor** and **Unit** can be modified.

Modify the order of the new curves

With the left mouse button pressed, drag the number field to the required position.

Template

.

Delete plotted curve

Delete new curves

Click inside the number field of the curve to be deleted and then press the delete key. Via **Template > Delete plotted curve**, all new curves can be simultaneously deleted.

4

Calculating and saving the new curves

Click on **Calculate** then enter the name and set the directory for the new data record. Click on **Save**.

Note: The curves are saved as data records (*.mrs). The saved measurement parameters can be displayed and processed as a curve or as a table by the Viewer. Intermediate values are interpolated.

Only curves that overlap timewise can be calculated.

Template

.

Write

.

.

Read

Creating a template for processing recurring tasks

Once you have created the new curves you can save their labels and formulae as a template (*.mse). (**Template > Write**).

Creating new curves using templates

Open the required template (*.mse) via **Template > Read**. This will automatically generate a number of new curves.

Multiple templates may be used to generate new curves. Each template generates a number of new curves.

Operators / brackets

+ - * / ^	Plus, minus, multiply, divide, to the power of
()	Open brackets, close brackets

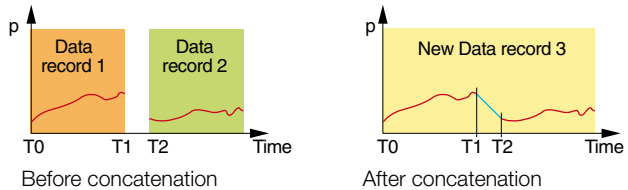
Functions

sqrt(no.)	Square root of the number
ln(no.)	Natural logarithm of the number (base e)
exp(no.)	Raise basis e to the power of the number
abs(no.)	Absolute value of the number
sgn(no.)	no. >0: sgn = 1 no. =0: sgn = 0 no. <0: sgn = -1
cos(no.)	Cosine of the number
sin(no.)	Sine of the number
tan(no.)	Tangent of the number
ctg(no.)	Cotangent of the number
arcsin(no.)	Arc sine of the number
arccos(no.)	Arc cosine of the number
arctan(no.)	Arc tangent of the number
arcctan(no.)	Arc cotangent of the number
sinh(no.)	Hyperbolic sine of the number
cosh(no.)	Hyperbolic cosine of the number
tangh(no.)	Hyperbolic tangent of the number
ctgh(no.)	Hyperbolic cotangent of the number
toggleSgn(no.)	Changes every second measurement parameter sign (plus/minus)

Further functions on request

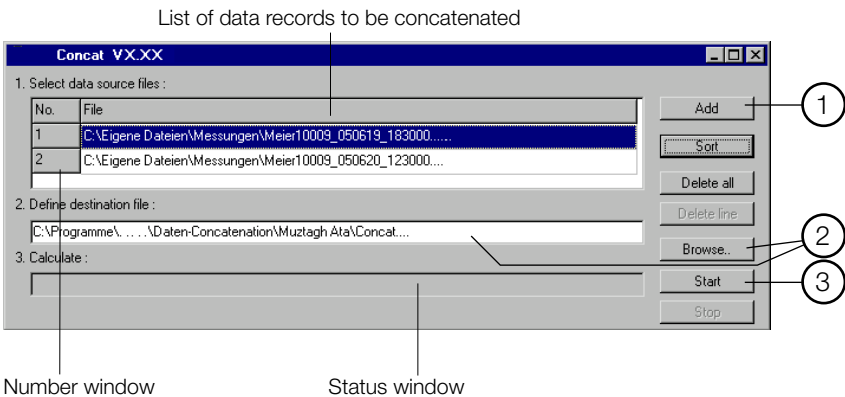
Concat

With **Concat** (concatenate = to link) data records can be linked together and saved as a new data record (*.msr). The newly created data record can be displayed and processed in the form of curves or as a table using the Viewer.



Concatenating several data records

Start **Concat** (**Logger program window > Tools > Concat**)



1 Select the data records to be concatenated

Open the data records that you want to concatenate by clicking **Add**. Note that the list must be in chronological order such that the oldest data record is at the top. Therefore either open the oldest data record first or sort the list afterwards (see below).

Sort the list alphabetically

Use **Sort** to sort the list alphabetically.

Data records that have automatically generated filenames (->41) can be chronologically sorted using **Sort**.

Modify the data record order

With the left mouse button pressed, drag the number field to the required position.

Delete all data records from the list
 Use Delete all to remove all data records from the list.

Delete one data record from the list
 Select the data record to be deleted and click Delete line.

2 Enter the name and directory for the new data record

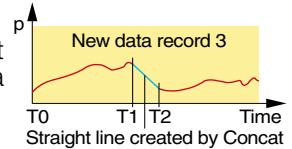
Set the path to the directory using Browse and enter the filename, or use the input window to do this.

3 Calculating the new data record

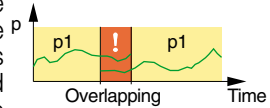
Start the calculation process with Start. Cancel the calculation with Stop.

Note:

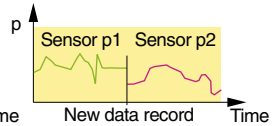
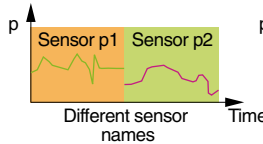
- Concat creates a straight line between the last data record of the first curve (T1) and the first data record of the second curve (T2).



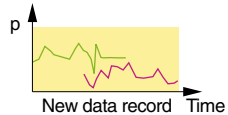
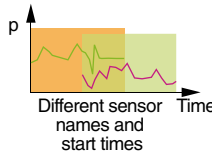
- If, for the data records to be concatenated, there are curves that overlap timewise and these have the same name (same module and sensor names with the same units), the calculation will be aborted and a corresponding message* will appear in the status window.



- If the module names, sensor names or units of the curves to be concatenated do not correspond Concat will be unable to join the curves and will create two curves.**

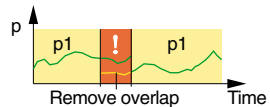


- With Concat you can superimpose curves with different module or sensor names.



*** Remove overlap**

Use the Cut utility to create an excerpt from a data record that does not overlap timewise with the next data record.



**** Modify module names, sensor names and units**

Use the Calc utility to match the module names, sensor names and units for the curves.

Additional software for PCs

FreeMat _____



