

Rosemount™ 4600 Oil & Gas Panel Pressure Transmitter

HART Revision 7



NOTICE

Read this manual before working with the product. For personal and system safety, and for optimum product performance, ensure you thoroughly understand the contents before installing, using, or maintaining this product.

Emerson has two toll-free assistance numbers:

Customer Central

Technical support, quoting, and order-related questions.

United States - 1-800-999-9307 (7:00 am to 7:00 pm CST)

Asia Pacific- 65 777 8211

Europe/Middle East/Africa - 49 (8153) 9390

North American Response Center

Equipment service needs.

1-800-654-7768 (24 hours—includes Canada)

Outside of these areas, contact your local Emerson representative.

⚠ CAUTION

The products described in this document are NOT designed for nuclear-qualified applications. Using non-nuclear qualified products in applications that require nuclear-qualified hardware or products may cause inaccurate readings. For information on Rosemount nuclear-qualified products, contact your local Emerson Sales Representative.

Apply torque only to the hex flat located at the process end of the transmitter. Do not apply torque to the transmitter body or electrical connection - severe damage could result. Do not exceed 100 ft-lb.

Static electricity can damage sensitive components.

Observe safe handling precautions for static-sensitive components.

⚠ WARNING

Explosions could result in death or serious injury.

Transmitters located in hazardous areas should be installed in accordance with local codes and requirements for that area.

Use appropriately rated Ex adapters, blanking elements, and glands during installation.

Keep process insulation at least 1-in. (25 mm) from transmitter connection.

Electrical shock could cause death or serious injury.

Avoid contact with the leads and terminals. High voltage that may be present on leads can cause electrical shock.

Process leaks could result in death or serious injury.

Properly tighten process connections before applying pressure.

Physical access

Unauthorized personnel can potentially cause significant damage and/or misconfiguration of end users' equipment. Protect against all intentional or unintentional unauthorized use.

Physical security is an important part of any security program and fundamental to protecting your system. Restrict physical access to protect users' assets. This is true for all systems used within the facility.

Contents

Chapter 1	Introduction.....	5
	1.1 Using this manual.....	5
	1.2 Product recycling/disposal.....	5
Chapter 2	Configuration.....	7
	2.1 Overview.....	7
	2.2 Safety messages.....	7
	2.3 Commissioning on the bench with HART Protocol.....	7
	2.4 Review configuration data.....	9
	2.5 Check output.....	10
	2.6 Basic setup.....	11
	2.7 Detailed setup.....	14
	2.8 Diagnostics and service.....	18
	2.9 Advanced functions for HART Protocol.....	19
	2.10 Multidrop communication	22
Chapter 3	Installation.....	25
	3.1 Overview.....	25
	3.2 Safety messages.....	25
	3.3 General considerations.....	26
	3.4 Mechanical considerations.....	26
	3.5 Installation procedures.....	27
	3.6 Hazardous locations.....	32
	3.7 Grounding the transmitter case.....	32
Chapter 4	Operation and Maintenance.....	33
	4.1 Overview.....	33
	4.2 Calibration for HART® Protocol.....	33
	4.3 Sensor trim.....	38
	4.4 Recall factory trim.....	40
	4.5 Analog output trim.....	41
Chapter 5	Troubleshooting	45
	5.1 Overview.....	45
	5.2 Safety messages.....	45
Appendix A	Specification and Reference Data.....	49
	A.1 Product certifications.....	49
	A.2 Ordering Information, Specifications, and Drawings.....	49

1 Introduction

1.1 Using this manual

The sections in this manual provides information on installing, operating, and maintaining the Rosemount™ 4600 Oil & Gas Pressure Transmitter. The sections are organized as follows:

[Configuration](#) contains mechanical and electrical installation instructions.

[Installation](#) provides instruction on commissioning and configuring the Rosemount 4600 Transmitter. Information on software functions, configuration parameters, and online variables is also included.

[Operation and Maintenance](#) contains operation and maintenance instructions.

[Troubleshooting](#) provides troubleshooting techniques for the most common operating problems.

[Specification and Reference Data](#) supplies reference and specification data, as well as ordering information and contains approval information.

1.2 Product recycling/disposal

Recycling of equipment and packaging should be taken into consideration and disposed of in accordance with local and national legislation/regulations.

2 Configuration

2.1 Overview

This section contains information on commissioning and tasks that should be performed on the bench prior to installation. This section contains the Rosemount™ 4600 Oil & Gas Pressure Transmitter HART® configuration information.

Field Communicator and AMS Device Manager instructions are given to perform configuration functions. For convenience, Field Communicator Fast Key sequences are labeled “Fast Keys” for each software function below the appropriate headings.

2.2 Safety messages

Procedures and instructions in this section may require special precautions to ensure the safety of the personnel performing the operations. Information that raises potential safety issues is indicated by a warning symbol (⚠). Refer to the following safety messages before performing an operation preceded by this symbol.

⚠ WARNING

Explosions could result in death or serious injury.

Transmitters located in hazardous areas should be installed in accordance with local codes and requirements for that area.

Verify that the operating atmosphere of the transmitter is consistent with the appropriate hazardous locations certifications.

Electrical shock could cause death or serious injury.

Avoid contact with the leads and terminals. High voltage that may be present on leads can cause electrical shock.

2.3 Commissioning on the bench with HART Protocol

Commissioning consists of testing the Rosemount 4600 and verifying transmitter configuration data. The transmitter can be commissioned either before or after installation. Commissioning the transmitter on the bench before installation using a Field Communicator or AMS Device Manager ensures that all transmitter components are in working order.

⚠ WARNING

To commission on the bench, connect the transmitter and the Field Communicator or AMS Device Manager. Connect Field Communicator leads at any termination point in the signal loop.

In order to commission the transmitter, the power supply must provide 10 to 42.4 Vdc at the transmitter terminals. A current meter is also required to measure current output. To enable communication, a resistance of at least 250 ohms must be present between the Field Communicator loop connection and the power supply. Do not use inductive-based transient protectors with more than 3 mH of inductance with the Rosemount 4600.

When using a Field Communicator, any configuration changes made must be sent to the transmitter by using the “**Send**” key (F2). AMS Device Manger configuration changes are implemented when the “**Apply**” button is selected.

For more information on the Field Communicator, see [Field Communicator](#) website for the most up to date literature. AMS Device Manger help can be found in the AMS Device Manager online guides within the AMS system.

2.3.1 Setting the loop to manual

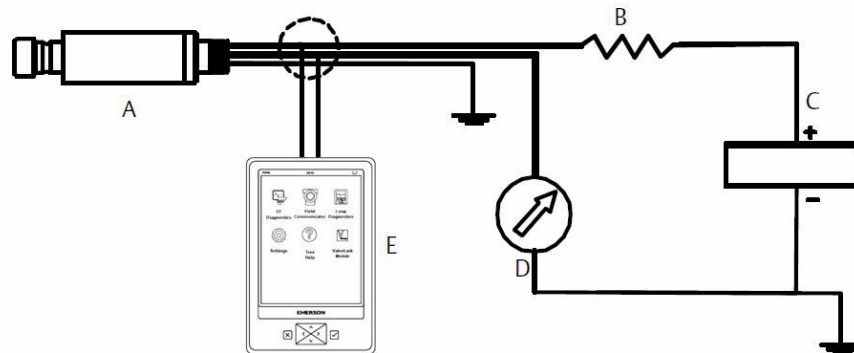
Whenever sending or requesting data that would disrupt the loop or change the output of the transmitter, set the process application loop to manual. The Field Communicator or AMS Device Manager will prompt you to set the loop to manual when necessary. Acknowledging this prompt does not set the loop to manual. The prompt is only a reminder; set the loop to manual as a separate operation.

2.3.2 Wiring diagrams

Bench hook-up

Connect the bench equipment as shown in [Figure 2-1](#) and turn on the Field Communicator by pressing the **ON/OFF** key or log into AMS Device Manager. The Field Communicator or AMS Device Manager will search for a HART-compatible device and indicate when the connection is made. If the Field Communicator or AMS Device Manager fail to connect, it indicates that no device was found. If this occurs, refer to [Troubleshooting](#).

Figure 2-1: Bench Wiring (4–20 mA)



- A Rosemount 4600
- B $R_L > 250$ ohm
- C Power supply
- D Current meter
- E Field Communicator

2.4 Review configuration data

Note

Information and procedures in this section that make use of Field Communicator Fast Key sequences and AMS Device Manager assume the transmitter and communication equipment are connected, powered, and operating correctly.

Field Communicator

Before placing the transmitter into operation, review the transmitter configuration data below which was set by the factory.

PV Lower Sensor Limit (LSL)	Tag
PV Upper Sensor Limit (USL)	Date
PV Lower Range Value (LRV)	Descriptor
PV Upper Range Value (URV)	Message
PV minimum span	Write protect
Lower sensor trim point	Local keys
Upper sensor trim point	Universal revision
Sensor trim calibration type	Field device revision

Damping	Software revision
Alarm direction	Hardware revision
High Alarm (Value)	Physical signal code
Low Alarm (Value)	Final assembly number
High saturation	Device ID
Low saturation	Burst mode
Alarm/Saturation type	Burst option
Sensor S/N	Poll address
Isolator material	Number req preams
Fill fluid	Distributor
Process connector	
Process connector material	

AMS Device Manger

Right click on the device and select **Configuration Properties** from the menu. Select the tabs to review the transmitter configuration data.

2.5 Check output

Before performing other transmitter online operations, review the digital output parameters to ensure the transmitter is operating properly and is configured to the appropriate process variables.

2.5.1 Process variables

The process variables for the Rosemount 4600 provide transmitter output, and are continuously updated. The pressure reading in both engineering units and percent of range will continue to track with pressures outside of the defined range from the lower to the upper range limit.

Field Communicator

The process variable menu displays the following process variables:

- Pressure
- Percent of range
- Analog output
- Sensor temperature

Note

Regardless of the range points, the Rosemount 4600 will measure and report all readings within the digital limits of the sensor. For example, if the 4 and 20 mA points are set to 0 and 1,000 psi, and the transmitter detects a pressure of 2,500 psi, it digitally outputs the

2,500 psi reading and a 250 percent of span reading. However, there may be up to ± 5.0 percent error associated with output outside of the range points.

AMS Device Manger

Right click on the device and select **Process Variables...** from the menu. The process variable screen displays the following process variables:

- Pressure
- Percent of range
- Analog output
- Sensor temperature

2.5.2 Sensor temperature

The Rosemount 4600 contains a temperature sensor near the pressure sensor in the transmitter. When reading this temperature, keep in mind this is not an accurate indicator of process temperature.

Field Communicator

Enter the Fast Key sequence below *Sensor Temperature* to view the sensor temperature reading.

AMS Device Manger

Right click on the device and select **Process Variables...** from the menu. *Snsr Temp* is the sensor temperature reading.

2.6 Basic setup

2.6.1 Set process variable units

The PV Unit command sets the process variable units to allow you to monitor your process using the appropriate units of measure.

Field Communicator

Enter the Fast Key sequence shown. Select from the following engineering units:

inH ₂ O	bar	torr
inHg	mbar	atm
ftH ₂ O	g/cm ²	MPa
mmH ₂ O	kg/cm ²	inH ₂ O at 4 °C
mmHg	Pa	mmH ₂ O at 4 °C
psi	kPa	

AMS Device Manger

Right click on the device and select **Configuration Properties** from the menu. In the **Basic Setup** tab, use **Unit** drop down menu to select units.

2.6.2 Rerange

The Range Values command sets the 4 and 20 mA points and digital lower (LRV) and upper (URV) range values. In practice, you may reset the transmitter range values as often as necessary to reflect changing process conditions. Changing the lower or upper range point results in similar changes to the span.

Note

Transmitters are shipped from Emerson, fully calibrated per request or by the factory default of full scale (span = upper range limit.)

Use one of the methods below to rerange the transmitter. Each method is unique; examine all options closely before deciding which method works best for your process.

- Rerange with a Field Communicator only.
- Rerange with a pressure input source and a Field Communicator.
- Rerange with a pressure input source and the local zero and span targets (option D1).
- Rerange with AMS Device Manger only.
- Rerange with a pressure input source and AMS Device Manger.

Rerange with a Field Communicator only

The easiest and most popular way to rerange is to use the Field Communicator only. This method changes the values of the analog 4 and 20 mA points independently without a pressure input.

From the **HOME** screen, enter the Fast Key sequence shown.

Procedure

1. At **Keypad Input** select **1** and use the keypad to enter lower range value.
2. From **Keypad Input** select **2** and use the keypad to enter upper range value.

Rerange with a pressure input source and Field Communicator

Reranging using the Field Communicator and a pressure source or process pressure is a way of reranging the transmitter when specific 4 and 20 mA points are unknown.

Note

The span is maintained when the 4 mA point is set. The span changes when the 20 mA point is set. If the lower range point is set to a value that causes the upper range point to exceed the sensor limit, the upper range point is automatically set to the sensor limit, and the span is adjusted accordingly.

Procedure

From the **HOME** screen, enter the Fast Key sequence shown to configure lower and upper range values and follow the online instructions.

Rerange with AMS Device Manger only

Right click on the device and select **Configuration Properties** from the menu. In the **Basic Setup** tab, locate the **Analog Output** box and perform the following procedure:

Procedure

1. Enter the lower range value (LRV) and the upper range value (URV) in the fields provided. Select **Apply**.
2. An **Apply Parameter Modification** screen appears, enter desired information and select **OK**.
3. After carefully reading the warning provided, select **OK**.

Rerange with a pressure input source and AMS Device Manger

Right click on the device, choose **Calibrate**, then **Apply values** from the menu.

Procedure

1. Select **Next** after the control loop is set to manual.
2. From the **Apply Values** menu, follow the online instructions to configure lower and upper range values.
3. Select **Exit** to leave the **Apply Values** screen.
4. Select **Next** to acknowledge the loop can be returned to automatic control.
5. Select **Finish** to acknowledge the method is complete.

2.6.3 Damping

The Damp command introduces a delay in processing which increases the response time of the transmitter; smoothing variations in output readings caused by rapid input changes. Determine the appropriate damp setting based on the necessary response time, signal stability, and other requirements of the of loop dynamics of your system. The default damping value is 0.4 seconds and is user-selectable from 0 to 60 seconds.

AMS Device Manger

Right click on the device and select **Configuration Properties** from the menu.

Procedure

1. In the **Basic Setup** tab, enter the damping value in the **Damp** field, select **Apply**.
2. An **Apply Parameter Modification** screen appears, enter desired information and select **OK**.
3. After carefully reading the warning provided, select **OK**.

2.7 Detailed setup

2.7.1 Failure mode alarm and saturation

The Rosemount 4600 Transmitter automatically and continuously perform self-diagnostic routines. If the self-diagnostic routines detect a failure, the transmitter drives the output to configured alarm values. The transmitter will also drive the output to configured saturation values if the applied pressure goes outside the 4–20 mA range values.

Note

The failure mode alarm direction can also be configured using the Field Communicator or AMS Device Manager.

Note

Under some failure conditions, the transmitter will ignore user configured alarm conditions and drive the transmitter to low alarm.

The Rosemount 4600 Transmitter have three configurable options for failure mode alarm and saturation levels:

- Rosemount (standard), see [Table 2-1](#)
- Custom, see [Table 2-2](#)

Table 2-1: Rosemount (Standard) Alarm and Saturation Values

Level	4–20 mA saturation	4–20 mA alarm
Low	3.9 mA	≤ 3.75 mA
High	20.8 mA	≥ 21.75 mA

Table 2-2: Custom Alarm and Saturation Values

Level	4–20 mA saturation	4–20 mA alarm
Low	3.7 mA – 3.9 mA	3.6 mA – 3.8 mA
High	20.1 mA – 21.5 mA	20.2 mA – 23.0 mA

Failure mode alarm and saturation levels can be configured using a Field Communicator or AMS Device Manager, see [Alarm and saturation level configuration](#). Per [Table 2-2](#), custom alarm and saturation levels can be configured between 3.6 mA and 3.9 mA for low values and between 20.1 mA and 23 mA for high values. The following limitations exist for custom levels:

- Low alarm level must be less than the low saturation level
- High alarm level must be higher than the high saturation level
- High saturation level must not exceed 21.5 mA
- Alarm and saturation levels must be separated by at least 0.1 mA

The Field Communicator or AMS Device Manager will provide an error message if a configuration rule is violated.

2.7.2 Alarm and saturation level configuration

To configure alarm and saturation levels with a Field Communicator or AMS Device Manager perform the following procedure:

Field Communicator

Procedure

1. From the **HOME** screen, follow the Fast Key sequence under Alarm and Saturation Levels.
2. Select **7, Config. Alarm Level** to configure alarm levels.
3. Select **OK** after setting the control loop to manual.
4. Select **OK** to acknowledge current settings.
5. Select desired setting, if **OTHER** is selected, enter HI and LO custom values.
6. Select **OK** to acknowledge the loop can be returned to automatic control.
7. Select **8, Config. Sat. Levels** to configure saturation levels.
8. Repeat [Step 3-Step 6](#) to configure saturation levels.

AMS Device Manger

Procedure

1. Right click on the device, select **Device Configuration**,
2. Select **Alarm/Saturation Levels**,
3. Select **Alarm Levels** from the menu.
4. Select **Next** after setting the control loop to manual.
5. Select **Next** after acknowledging the current alarm levels.
6. Select the desired alarm settings: **NAMUR**, **Rosemount**, **Other**.
7. If **Other** is selected, enter desired **HI Value** and **LO Value** custom values.
8. Select **Next** to acknowledge new alarm levels.
9. Select **Next** to acknowledge the loop can be returned to automatic control.
10. Select **Finish** to acknowledge the method is complete.
11. Right click on the device, select **Device Configuration**, then select **Alarm/Saturation Levels**, then **Alarm Levels** from the menu.
12. Select **Saturation Levels**.
13. Repeat [Step 5-Step 11](#) to configure saturation levels.

2.7.3 Alarm and saturation levels for burst mode

Transmitters set to burst mode handle saturation and alarm conditions differently.

Alarm conditions

- Analog output switches to alarm value

- Primary variable is burst with a status bit set
- Percent of range follows primary variable
- Temperature is burst with a status bit set

Saturation

- Analog output switches to saturation value
- Primary variable is burst normally
- Temperature is burst normally

2.7.4 Alarm and saturation values for multidrop mode

Transmitters set to multidrop mode handle saturation and alarm conditions differently.

Alarm conditions

- Primary variable is sent with a status bit set
- Percent of range follows primary variable
- Temperature is sent with a status bit set

Saturation

- Primary variable is sent normally
- Temperature is sent normally

2.7.5 Alarm level verification

To verify the transmitter alarm values, perform a loop test and set the transmitter output to the alarm value (see [Table 2-1](#) and [Table 2-2](#), and [Advanced functions for HART Protocol](#)). This feature is also useful in testing the reaction of the control system to a transmitter in an alarm state.

2.7.6 Process alerts

Process alerts allow the user to configure the transmitter to output a HART message when the configured data point is exceeded. Process alerts can be set for pressure, temperature, or both. A process alert will be transmitted continuously if the pressure or temperature set points are exceeded and the alert mode is **ON**. An alert will be displayed on a Field Communicator, or AMS Device Manger status screen. The alert will reset once the value returns within range.

Note

HI alert value must be higher than the LO alert value. Both alert values must be within the pressure or temperature sensor limits.

Field Communicator

To configure the process alerts with a Field Communicator, perform the following procedure:

Procedure

1. From the *HOME* screen, follow the Fast Key sequence listed.
2. Select **3, Config Press Alert** to configure the pressure alert. Select **4, Config Temp Alert** to configure the temperature alerts.
3. Use the right arrow key to configure the HI and LO alert values.
4. Use the left arrow to move back to the process alert menu. Select **1, Press Alert Mode** to turn on the pressure alert mode. Select **2, Temp Alert Mode** to turn on the temperature alert mode.

AMS Device Manger

Right click on the device and select **Configuration Properties** from the menu.

Procedure

1. In the *Analog Output* tab, locate the **Configuration Pressure Alerts** box, enter **Press Hi Alert Val** and **Press Lo Alert Val** to configure the pressure alerts.
2. Configure **Press Alert Mode** to **ON** or **OFF** the drop down menu.
3. In the **Configuration Temperature Alerts** box, enter **Temp Hi Alert Val** and **Temp Lo Alert Val** to configure the temperature alerts.
4. Configure **Temp Alert Mode** to **ON** or **OFF** using the drop down menu and select **Apply**.
5. An **Apply Parameter Modification** screen appears, enter desired information and select **OK**.
6. After carefully reading the warning provided, select **OK**.

2.7.7 Sensor temperature unit

The Sensor Temperature Unit command selects between Celsius and Fahrenheit units for the sensor temperature. The sensor temperature output is accessible via HART only.

AMS Device Manger

Right click on the device and select **Configuration Properties** from the menu.

Procedure

1. In the Process Input tab, use the drop down menu **Snsr temp unit** to select **F** (Fahrenheit) or **C** (Celsius). Select **Apply**.
2. Select **Next** to acknowledge send warning.
3. Select **Finish** to acknowledge the method is complete.
4. An **Apply Parameter Modification** screen appears, enter desired information and select **OK**.
5. After carefully reading the warning, select **OK**.

2.8 Diagnostics and service

Diagnostics and service functions listed below are primarily for use after field installation. The Transmitter Test feature is designed to verify that the transmitter is operating properly, and can be performed either on the bench or in the field. The Loop Test feature is designed to verify proper loop wiring and transmitter output, and should only be performed after you install the transmitter.

2.8.1 Loop Test

The Loop Test command verifies the output of the transmitter, the integrity of the loop, and the operations of any recorders or similar devices installed in the loop.

Field Communicator

To initiate a loop test, perform the following procedure:

Procedure

1. Connect a reference meter to the transmitter by shunting transmitter power through the meter at some point in the loop.
2. From the **Home** screen, enter the Fast Key sequence below Loop Test to verify the output of the transmitter.
3. Select **OK** after the control loop is set to manual (see [Setting the loop to manual](#)).
4. Select a discrete milliamp level for the transmitter to output. At the **Choose Analog Output** prompt select **1: 4mA**, select **2: 20mA**, or select **3: Other** to manually input a value.
 - a) If you are performing a loop test to verify the output of a transmitter, enter a value between 4 and 20 mA.
 - b) If you are performing a loop test to verify alarm levels, enter the milliamp value representing an alarm state (see [Table 2-1](#) and [Table 2-2](#)).
5. Check the reference meter installed in the test loop to verify that it displays the commanded output value.
 - a) If the values match, the transmitter and the loop are configured and functioning properly.
 - b) If the values do not match, the current meter may be attached to the wrong loop, there may be a fault in the wiring, the transmitter may require an output trim, or the reference meter may be malfunctioning.

After completing the test procedure, the display returns to the loop test screen to select another output value or to end loop testing.

AMS Device Manger

Procedure

1. Right click on the device and select **Diagnostics and Test** then **Loop test** from the menu.

2. Select **Next** after setting the control loop to manual.
3. Select desired analog output level. Select **Next**.
4. Select **Next** to acknowledge output being set to desired level.
5. Check the reference meter installed in the test loop to verify that it displays the commanded output value.
 - a) If the values match, the transmitter and the loop are configured and functioning properly.
 - b) If the values do not match, the current meter may be attached to the wrong loop, there may be a fault in the wiring, the transmitter may require an output trim, or the reference meter may be malfunctioning.

After completing the test procedure, the display returns to the loop test screen to select another output value or to end loop testing.

6. Select **End** and select **Next** to end loop testing.
7. Select **Next** to acknowledge the loop can be returned to automatic control.
8. Select **Finish** to acknowledge the method is complete.

2.9 Advanced functions for HART Protocol

2.9.1 Saving, recalling, and cloning configuration data

Use the cloning feature of the Field Communicator or the AMS Device Manger “User Configuration” feature to configure several Rosemount 4600 Transmitter similarly. Cloning involves configuring a transmitter, saving the configuration data, then sending a copy of the data to a separate transmitter. Several possible procedures exist when saving, recalling, and cloning configuration data. For complete instructions refer to the Field Communicator [Reference Manual](#) or AMS online guides. One common method is as follows:

Note

Do not clone an absolute pressure transmitter with sealed gauge pressure configuration data. Do not clone a sealed gauge pressure transmitter with absolute pressure data.

Field Communicator

Procedure

1. Confirm and apply configuration changes to the first transmitter.

Note

If transmitter configuration has not been modified, “SAVE” option in [Step 2](#) will be disabled.

2. Save the configuration data:
 - a) Select **SAVE** from the bottom of the Field Communicator screen.
 - b) Select to save your configuration in either the “**Internal Flash**” (default) or the “**Configuration EM**” (Configuration Expansion Module).

- c) Enter the name for this configuration file. The default name is the transmitter tag number.
 - d) Select **SAVE**.
3. Power the receiving transmitter and connect with Field Communicator.
4. Access the HART Application menu by pressing the **LEFT ARROW** from the **HOME/ONLINE** screen.
5. Locate the saved transmitter configuration file.
 - a) Select **Offline**
 - b) Select **Saved Configuration**
 - c) Select either **Internal Flash Contents** or **Configuration EM Content** depending on where the configuration was stored per [2.b](#).
6. Use the **DOWN ARROW** to scroll through the list of configurations in the memory module, and use the **RIGHT ARROW** to select and retrieve the desired configuration.
7. Select **Send** to transfer the configuration to the receiving transmitter.
8. Select **OK** after the control loop is set to manual.
9. After the configuration has been sent, select **OK** to acknowledge that the loop can be returned to automatic control. When finished, the Field Communicator informs you of the status. Repeat [Step 3](#) through [Step 9](#) to configure another transmitter.

Note

The transmitter receiving cloned data must have the same software version (or later) as the original transmitter.

AMS Device Manger creating a reusable copy

To create a reusable copy of a configuration perform the following procedure:

Procedure

1. Select **View** then **User Configuration View** from the menu bar (or click the toolbar button).
2. In the **User Configuration** window, right click and select **New** from the context menu.
3. In the **New** window, select a device from the list of templates shown, and select **OK**.
4. The template is copied into the **User Configurations** window, with the tag name highlighted; rename it as appropriate and select **Enter**.

Note

A device icon can also be copied by dragging and dropping a device template or any other device icon from AMS Explorer or Device Connection View into the User Configurations window.

The **Compare Configurations** window appears, showing the Current values of the copied device on one side and mostly blank fields on the other (User Configuration) side.

5. Transfer values from the current configuration to the user configuration as appropriate or enter values by typing them into the available fields.
6. Select **Apply** to apply the values, or select **OK** to apply the values and close the window.

AMS Device Manger applying a user configuration

Any amount of user configurations can be created for the application. They can also be saved, and applied to connected devices or to devices in the device list or plant database.

Note

When using AMS Revision 6.0 or later, the device to which the user configuration is applied, must be the same model type as the one created in the user configuration. When using AMS Revision 5.0 or earlier, the same model type and revision number are required.

To apply a user configuration, perform the following procedure:

Procedure

1. Select the desired user configuration in the *User Configurations* window.
2. Drag the icon onto a like device in AMS Explorer or Device Connection View. The *Compare Configurations* window opens, showing the parameters of the target device on one side and the parameters of the user configuration on the other.
3. Transfer parameters from the user configuration to the target device as desired. Select **OK** to apply the configuration and close the window.

2.9.2 Burst mode

When configured for burst mode, the Rosemount 4600 provides faster digital communication from the transmitter to the control system by eliminating the time required for the control system to request information from the transmitter. Burst mode is compatible with the analog signal. Because the HART protocol features simultaneous digital and analog data transmission, the analog value can drive other equipment in the loop while the control system is receiving the digital information. Burst mode applies only to the transmission of dynamic data (pressure and temperature in engineering units, pressure in percent of range, and/or analog output), and does not affect the way other transmitter data is accessed.

Access to information other than dynamic transmitter data is obtained through the normal poll/response method of HART communication. A Field Communicator, AMS Device Manger, or the control system may request any of the information that is normally available while the transmitter is in burst mode. Between each message sent by the transmitter, a short pause allows the Field communicator, AMS Device Manger, or a control system to initiate a request. The transmitter will receive the request, process the response message, and then continue “bursting” the data approximately three times per second.

Field Communicator

To configure the transmitter for burst mode, perform the following step:

Procedure

From the *HOME* screen, enter the Fast Key sequence below *Burst Mode*.

AMS Device Manger

Right click on the device and select **Configuration Properties** from the menu.

Procedure

1. In the *HART* tab, use the drop down menu to select **Burst Mode ON** or **OFF**. For *Burst option* select the desired properties from the drop down menu. Burst options are as follows:
 - PV
 - % range/current
 - Process vars/crnt
 - Process variables
2. After selecting options, select **Apply**.
3. An **Apply Parameter Modification** screen appears, enter desired information and select **OK**.
4. After carefully reading the warning provided, select **OK**.

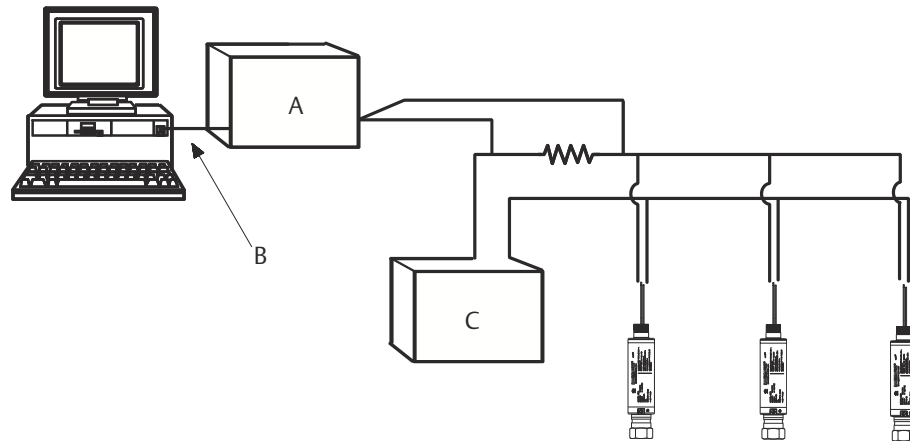
2.10 Multidrop communication

Multidropping transmitters refers to the connection of several transmitters to a single communications transmission line. Communication between the host and the transmitters takes place digitally with the analog output of the transmitters deactivated. Up to 15 transmitters can be connected on a single twisted pair of wires.

Multidrop installation requires consideration of the update rate necessary from each transmitter, the combination of transmitter models, and the length of the transmission line. Communication with transmitters can be accomplished with Bell 202 modems and a host implementing HART Protocol. Each transmitter is identified by a unique address (1–15) and responds to the commands defined in the HART Protocol. Field Communicators and AMS Device Manger can test, configure, and format a multidropped transmitter the same way as a transmitter in a standard point-to-point installation.

[Figure 2-2](#) shows a typical multidrop network. This figure is not intended as an installation diagram.

Figure 2-2: Typical Multidrop Network



- A** Bell 202 Modem
- B** RS-232-C
- C** Power supply

The Rosemount 4600 is set to address zero (0) at the factory, which allows operation in the standard point-to-point manner with a 4–20 mA output signal. To activate multidrop communication, the transmitter address must be changed to a number from 1 to 15. This change deactivates the 4–20 mA analog output, sending it to 4 mA. It also disables the failure mode alarm signal, which is controlled by the upscale/downscale alarm direction configuration parameter. Failure signals in multidropped transmitters are communicated through HART messages.

Note

A minimum loop resistance of 250 ohms is required to communicate with a Field Communicator. If a single power supply is used to power more than one Rosemount 4600, the power supply and circuitry common to the transmitter, should not have more than 20 ohms of impedance at 1200 Hz.

2.10.1 Changing a transmitter address

To activate multidrop communication, the transmitter poll address must be assigned a number from one to 15, and each transmitter in a multidropped loop must have a unique poll address.

Field Communicator

Procedure

From the *HOME* screen, enter the Fast Key sequence shown.

AMS Device Manger

Right click on the device and select **Configuration Properties** from the menu.

Procedure

1. In the *HART* tab, in the *ID* box, enter the poll address located in the *Poll addr* box. Select **Apply**.
2. An *Apply Parameter Modification* screen appears. Enter the desired information and select **OK**.
3. After carefully reading the warning provided, select **OK**.

2.10.2 Communicating with a multidropped transmitter

Field Communicator

To communicate with a multidropped transmitter, configure the Field Communicator to poll for a non-zero address.

Procedure

1. From the *HOME* screen, enter the Fast Key sequence shown.
2. On the polling menu, scroll down and select **Polling Addresses** and select the appropriate polling range. In this mode, the Field Communicator automatically polls for devices at addresses within the specified range upon start up.

AMS Device Manger

Procedure

Select on the HART modem icon and select **Scan All Devices**.

2.10.3 Polling a multidropped transmitter

Polling a multidropped loop determines the model, address, and number of transmitters on the given loop.

Field Communicator

Procedure

From the *HOME* screen, enter the Fast Key sequence shown.

AMS Device Manger

Procedure

Select on the HART modem icon and select **Scan All Devices**.

3 Installation

3.1 Overview

The information in this section covers installation considerations. A Quick Start Guide is shipped with every transmitter to describe basic mounting and wiring procedures for initial installation.

Field Communicator and AMS Device Manager instructions are provided to allow users to perform configuration functions. For convenience, Field Communicator Fast Key sequences are provided and labeled “Fast Keys” for each software function below the appropriate headings.

3.2 Safety messages

Procedures and instructions in this section may require special precautions to ensure the safety of the personnel performing the operation. Information that raises potential safety issues is indicated with a warning symbol (⚠). Refer to the following safety messages before performing an operation preceded by this symbol.

⚠ WARNING

Explosions could result in death or serious injury.

Transmitters located in hazardous areas should be installed in accordance with local codes and requirements for that area.

Use appropriately rated Ex adapters, blanking elements, and glands during installation.

Keep process insulation at least 1-in. (25 mm) from transmitter connection.

Electrical shock could cause death or serious injury.

Avoid contact with the leads and terminals. High voltage that may be present on leads can cause electrical shock.

Process leaks could result in death or serious injury.

Properly tighten process connections before applying pressure.

⚠ CAUTION

Apply torque only to the hex flat located at the process end of the transmitter. Do not apply torque to the transmitter body or electrical connection - severe damage could result. Do not exceed 100 ft-lb.

3.3 General considerations

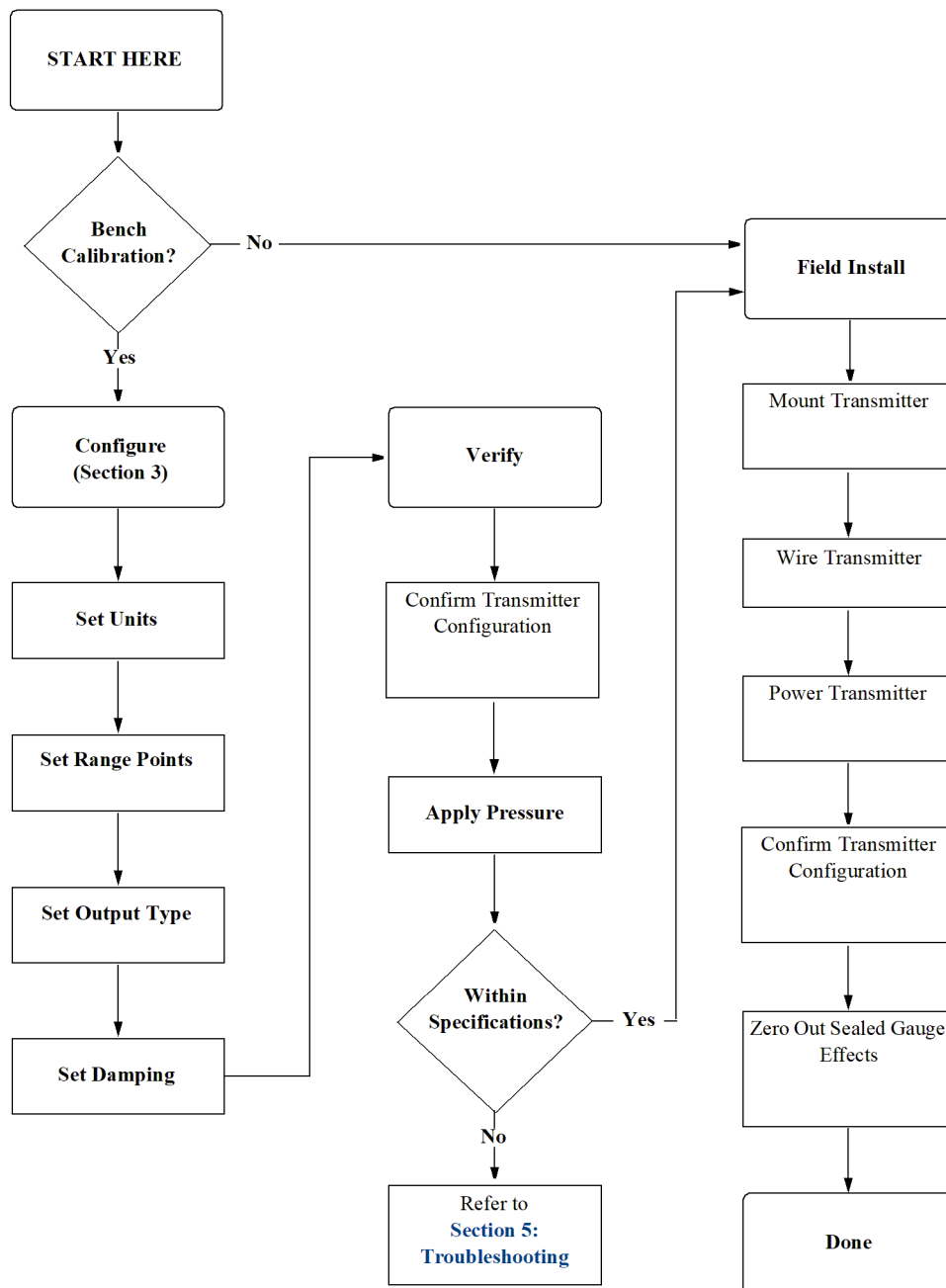
Measurement accuracy depends upon proper installation of the transmitter and impulse piping. Mount the transmitter close to the process and use a minimum of piping to achieve best accuracy. Also, consider the need for easy access, personnel safety, practical field calibration, and a suitable transmitter environment. Install the transmitter to minimize vibration, shock, and temperature fluctuation. [Specification and Reference Data](#) lists temperature operating limits.

3.4 Mechanical considerations

Note

For applications with process temperatures greater than the limits of the transmitter, do not blow down impulse piping through the transmitter. Flush lines with the blocking valves closed and refill lines with water before resuming measurement.

Figure 3-1: HART® Installation Flowchart



3.5 Installation procedures

For dimensional drawing information refer to [Specification and Reference Data](#).

3.5.1 Mount the transmitter

Panel mount Electrical connection

Procedure

1. Pull the leads through the threaded mounting hole in the panel wall.
2. Hand tighten the electrical connection into the mounting hole.
3. ⚠ Using a wrench on the hex flat at the process connection, apply sufficient torque to prevent transmitter vibration. Do not exceed 100 ft-lb.

Process connection

Procedure

1. Hand tighten the appropriate sized impulse piping into the process connection.
2. ⚠ Using a wrench on the hex flat at the impulse piping connection, apply enough torque to prevent the process fluid from leaking. Do not exceed 100 ft-lb.

Note

⚠ Apply torque only to the hex flat located at the process end of the transmitter. Do not apply torque to the transmitter body or electrical connection - severe damage could result. Do not exceed 100 ft-lb.

Note

Integral conduit seal meets the requirements of NEC® 2002 section 501:5 (A) and 501.5 (B). No additional conduit seal is required.

Note

The Rosemount™ 4600 Oil & Gas Pressure Transmitter features a reliable dual process seal design which meets the requirements of NEC 2002 section 501:5 (F)(3) and API 14F 6.8.2.2. No additional process sealing is required.

Impulse piping

The piping between the process and the transmitter must accurately transfer the pressure to obtain accurate measurements. There are five possible sources of error: pressure transfer, leaks, friction loss (particularly if purging is used), trapped gas in a liquid line and liquid in a gas line.

The best location for the transmitter in relation to the process pipe depends on the process itself. Use the following guidelines to determine transmitter location and placement of impulse piping:

- Keep impulse piping as short as possible.
- For liquid service, slope the impulse piping at least 1-in. per foot (8 cm per m) upward from the transmitter toward the process connection.
- For gas service, slope the impulse piping at least 1-in per foot (8 cm per m) downward from the transmitter toward the process connection.

- Avoid high points in liquid lines and low points in gas lines.
- Use impulse piping large enough to avoid friction effects and blockage.
- Vent all gas from liquid piping legs.
- When purging, make the purge connection close to the process taps and purge through equal lengths of the same size pipe. Avoid purging through the transmitter.
- Keep corrosive or hot (above 200 °F [93.3 °C]) process material out of direct contact with the transmitter.
- Prevent sediment deposits in the impulse piping.
- Avoid conditions that might allow process fluid to freeze within the process connector.

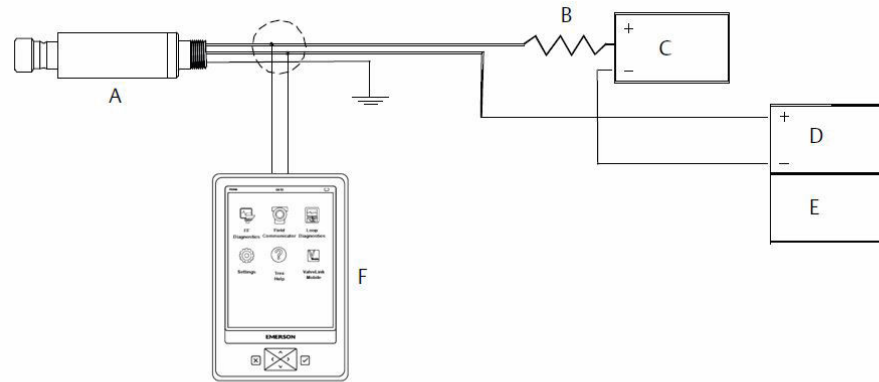
3.5.2 Connect wiring and power up

Wiring

To make connections, connect the red lead to the positive terminal of the power supply and the black lead to the positive terminal of the I/O card on the PLC. Connect the green wire to panel ground. Keep green ground wire as short as possible to minimize the effects of Radio Frequency Interference (RFI).

Inductive-based transient protectors with more than 3 mH of inductance can adversely affect the output of the Rosemount 4600. If your application requires transient protection, it is recommended that you order a transmitter with the transient protection option specified.

Figure 3-2: Field Wiring



- A Rosemount 4600
- B $RL > 250$ ohm
- C Power supply
- D I/O card
- E PLC
- F Field Communicator

Signal wiring grounding

Do not run signal wiring in conduit or open trays with power wiring, or near heavy electrical equipment.

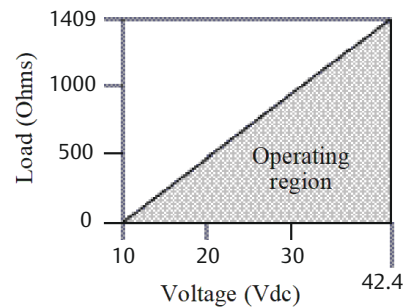
Power supply 4–20 mA transmitters

The DC power supply should provide power with less than two percent ripple. Total resistance load is the sum of resistance from signal leads and the load resistance of the controller, indicator, and related pieces. Note that the resistance of intrinsic safety barriers, if used, must be included.

Note

A minimum loop resistance of 250 ohms is required to communicate with a Field Communicator. If a single power supply is used to power more than one Rosemount 4600, the power supply and circuitry common to the transmitter, should not have more than 20 ohms of impedance at 1200 Hz.

Figure 3-3: Power Supply Load Limitations, 4–20 mA Transmitters



Maximum field loop resistance = $43.5 \times (\text{power supply voltage} - 10)$

Note

Communication requires a minimum loop resistance of 250 ohms.

Surges/transients

The transmitter will withstand electrical transients of the energy level usually encountered in static discharges or induced switching transients. However, high-energy transients, such as those induced in wiring from nearby lightning strikes, can damage the transmitter.

Optional transient protection

Transient protection can be ordered as a factory installed option (option code T1 in the transmitter model number). Transient protection can not be added to units ordered without the T1 option.

3.5.3 Zero the transmitter

Performing a zero adjustment is a recommended step for sealed gauge transmitters.

Note

Do not re-zero absolute transmitters.

Re-zeroing the transmitter allows for a single point adjustment to compensate for any mounting position and sealed gauge effects. This can be done with a zero trim (See [Sensor trim](#)), 4–20 mA rerange or with the zero and span adjustments.

3.5.4 Re-zeroing

Field Communicator

4 mA rerange

Procedure

1. Vent the transmitter.
2. Follow the HART Fast Key sequence shown.
3. Select **OK** after the control is set to manual (see [Setting the loop to manual](#)).

4. Select **1** to set the 4 mA point.
5. Select **OK** to set the new 4 mA point.
6. Select **1** to set the vented pressure as the new 4 mA point.
7. Select **3** to exit the screen.
8. Select **OK** to acknowledge that the loop can be returned to automatic control.

3.6 Hazardous locations

The Rosemount 4600 Transmitter has an explosion-proof housing. Individual transmitters are clearly marked with a tag indicating the certifications they carry. See [Specification and Reference Data](#) for additional information.

Note

Once a device labeled with multiple approvals is installed, it should not be reinstalled using any other approval type(s). Permanently mark the certification label to distinguish the installed approval type from unused approval types.

3.7 Grounding the transmitter case

Always ground the transmitter case in accordance with national and local electrical codes. The most effective transmitter case grounding method is a direct connection to earth ground with minimal impedance. Methods for grounding the transmitter case include:

- **Internal ground connection:** The green lead provides the internal ground connection, and is standard on all Rosemount 4600 Transmitters.
- **External ground assembly:** This assembly is included with the optional transient protection (option code T1). The external ground assembly can also be ordered with the transmitter (option code D4), or as a spare part ([4600-0113-0001](#)).

CAUTION

Grounding the transmitter case using the threaded electrical or process connections may not provide a sufficient ground. The transient protection (option code T1) will not provide transient protection unless the transmitter case is properly grounded. Use the above guidelines to ground the transmitter case. Do not run transient protection ground wire with signal wiring; the ground wire may carry excessive current if a lightning strike occurs.

4 Operation and Maintenance

4.1 Overview

This section contains information on operation and maintenance of the Rosemount™ 4600 Oil & Gas Pressure Transmitter.

Field Communicator and AMS Device Manager instructions are given to perform maintenance functions. For convenience, Field Communicator Fast Key sequences are labeled “Fast Keys” for each software function below the appropriate headings.

4.2 Calibration for HART® Protocol

Calibrating a transmitter may include the following procedures:

- **Rerange:** Sets the 4 and 20 mA points at required pressures.
- **Sensor Trim:** Adjusts the position of the factory characterization curve to optimize performance over a specified pressure range, or to adjust for mounting effects.
- **Analog Output Trim:** Adjusts the analog output to match the plant standard or the control loop.

The Rosemount 4600 uses a microprocessor that contains information about the sensor’s specific characteristics in response to pressure and temperature inputs. A smart transmitter compensates for these sensor variations. The process of generating the sensor performance profile is called factory characterization. Factory characterization also provides the ability to readjust the 4 and 20 mA points without applying pressure to the transmitter.

Trim and rerange functions differ significantly. Reranging sets analog output to the selected upper and lower range points and can be done with or without an applied pressure. Reranging does not change the factory characterization curve stored in the microprocessor. Sensor trimming requires an accurate pressure input and adds additional compensation that adjusts the position of the factory characterization curve to optimize performance over a specific pressure range.

Note

Sensor trimming adjusts the position of the factory characterization curve. It is possible to degrade performance of the transmitter if the trim is done improperly or with inaccurate equipment.

Table 4-1: Recommended Calibration Tasks

Transmitter	Bench calibration tasks	Field calibration tasks
Rosemount 4600G Rosemount 4600A	<ol style="list-style-type: none"> 1. Set output configuration parameters: <ol style="list-style-type: none"> a. Set the range points. b. Set the output units. c. Set the output type. d. Set the damping value. 2. Optional: Perform a full sensor trim if equipment available (accurate absolute pressure source required), otherwise perform the low trim value section of the full sensor trim procedure. 3. Optional: Perform an analog output trim (Accurate multimeter required). 	<ol style="list-style-type: none"> 1. Reconfigure parameters if necessary. 2. Perform low trim value section of the full sensor trim procedure to correct for mounting position effects.

4.2.1 Calibration overview

Complete calibration of the Rosemount 4600 involves the following tasks:

Configure the output parameters

- Set process variable units ([Process variables](#))
- Rerange ([Rerange](#))
- Set damping ([Damping](#))

Calibrate the sensor

- Full trim ([Full trim](#))
- Zero trim ([Zero Trim](#))

Calibrate the 4–20 mA output

- 4–20 mA output trim ([Digital-to-analog trim](#)); or
- 4–20 mA output trim using other scale ([Digital-to-analog trim using alternate scale](#))

[Figure 4-1](#) illustrates Rosemount 4600 data flow. Data flow can be summarized in four major steps:

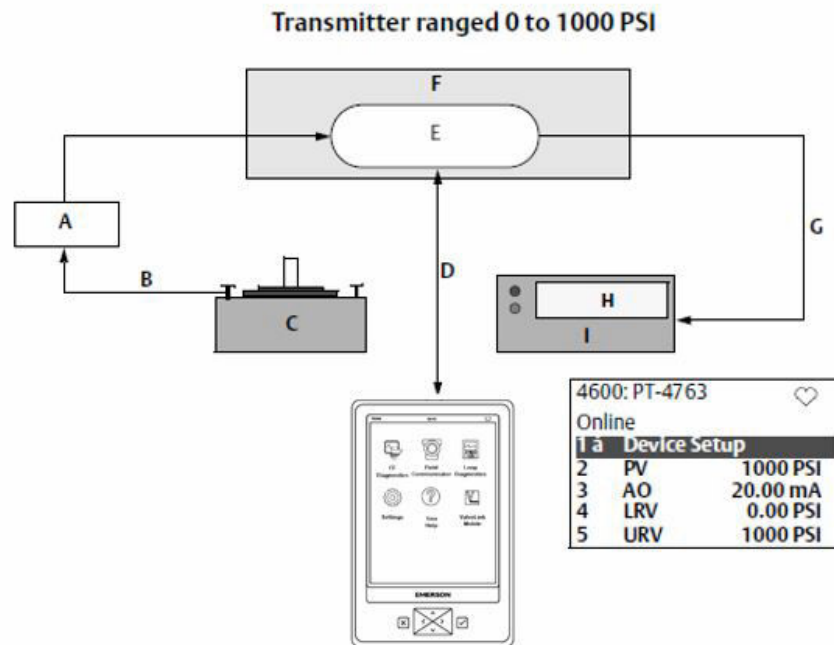
Procedure

1. A change in pressure is measured by a change in the sensor output (sensor signal).
2. The sensor signal is converted to a digital format that is understood by the microprocessor (analog-to-digital signal conversion).
3. Corrections are performed in the microprocessor to obtain a digital representation of the process input (digital PV).
4. The Digital PV is converted to an analog value (digital-to-analog signal conversion).

Figure 4-1 also identifies the approximate transmitter location for each calibration task. Data flows from left to right, and a parameter change affects all values to the right of the changed parameter.

Not all calibration procedures should be performed for each Rosemount 4600. Some procedures are appropriate for bench calibration, but should not be performed during field calibration. Table 4-1 identifies the recommended calibration procedures for each type of Rosemount 4600 transmitter for bench or field calibration.

Figure 4-1: Transmitter Data Flow with Calibration Options

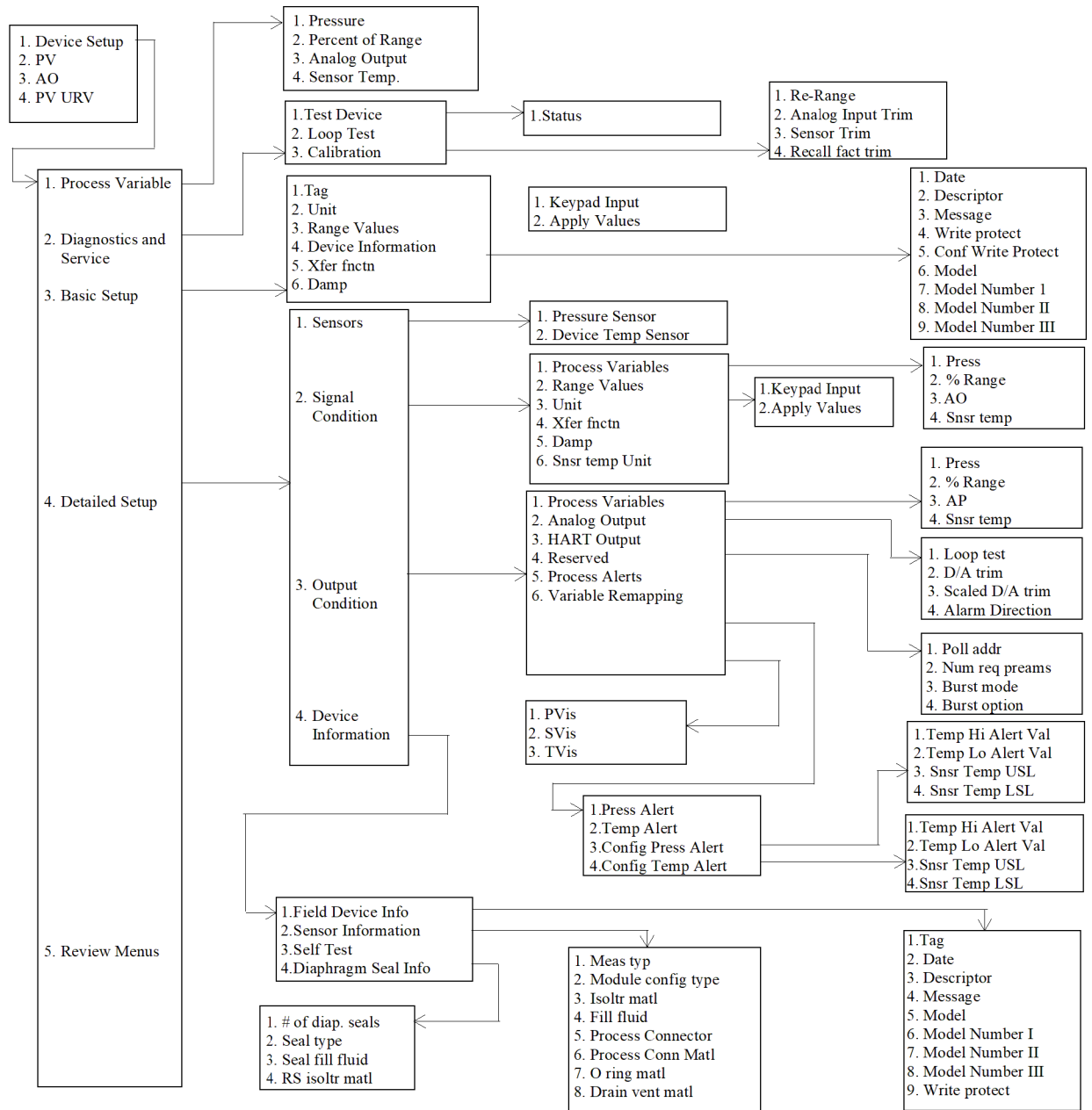


- | | |
|------------------------------------|---|
| A Sensor | F Transmitter electronics module |
| B Input pressure | G Analog output |
| C Input device | H 20 mA |
| D Field Communicator | I Output device |
| E Microprocessor digital PV | |

Note

Value on PV line should equal the input pressure. Value on AO line should equal the output device reading.

Figure 4-2: HART Menu Tree



4.2.2 Determining calibration frequency

Calibration frequency can vary greatly depending on the application, performance requirements, and process conditions. Use the following procedure to determine calibration frequency that meets the needs of your application.

Procedure

1. Determine the performance required for your application.
2. Determine the operating conditions.
3. Calculate the Total Probable Error (TPE).
4. Calculate the stability per month.
5. Calculate the calibration frequency.

Sample calculation

Procedure

1. Determine the performance required for your application.

Required Performance: 1.1% of span

2. Determine the operating conditions.

Transmitter: Rosemount 4600G, Range 4

Calibrated Span: 4000 psig

Ambient Temperature Change: 50 °F

3. Calculate total probable error (TPE).

$$\text{TPE} = \sqrt{(\text{ReferenceAccuracy})^2 + (\text{TemperatureEffect})^2} = 0.572\% \text{ of span}$$

Where:

Reference Accuracy = ± 0.25% of span

Ambient Temperature Effect =

$$\pm \left(\frac{0.03 \times \text{URL}}{\text{Span}} + 1.0 \right) \frac{\text{per } 100^\circ\text{F}}{2} = \pm 0.515\% \text{ of span}$$

Note

Temperature Effect is specified per 100 °F, divide by 2 for 50 °F temperature change.

4. Calculate the stability per month.

Stability = ±0.1% of URL for 5 years = ±0.0021% of span per month

5. Calculate calibration frequency.

$$\text{Cal. Freq.} = \frac{(\text{Req. Performance} - \text{TPE})}{\text{Stability per Month}} = \frac{(1.1\% - 0.57\%)}{0.0021\%} = 252 \text{ months}$$

4.2.3 Selecting a trim procedure

To decide which trim procedure to use, you must first determine whether the analog-to-digital section or the digital-to-analog section of the transmitter electronics need calibration. Refer to [Table 4-1](#) and perform the following procedure:

Procedure

1. Connect a pressure source, a Field Communicator or AMS Device Manager, and a digital readout device to the transmitter.
2. Establish communication between the transmitter and the Field Communicator.
3. Apply pressure equal to the upper range point pressure.
4. Compare the applied pressure to the Process Variable (PV) line on the Field Communicator Online Menu or the Primary Variables screen in AMS Device Manager.
 - a) If the PV reading does not match the applied pressure (with high-accuracy test equipment), perform a sensor trim.
5. Compare the Analog Output (AO) line, on the Field Communicator or AMS Device Manager, to the digital readout device.
 - a) If the AO reading does not match the digital readout device (with high-accuracy test equipment), perform an output trim.

4.3 Sensor trim

Trim the sensor using either full or zero trim functions. Trim functions vary in complexity and are application-dependent. Both trim functions alter the transmitter's interpretation of the input signal.

Zero trim is a single-point adjustment. It is useful for compensating for mounting position and sealed gauge effects. Since this correction maintains the slope of the characterization curve, it should not be used in place of a full trim over the full sensor range.

When performing a zero trim, ensure that the transmitter is vented to atmosphere.

Note

Do not perform a zero trim on Rosemount 4600 Absolute Pressure Transmitters. Zero trim is zero based, and absolute pressure transmitters reference absolute zero. To correct mounting position effects on a Rosemount 4600 Oil and Gas Transmitter, perform a low trim within the full sensor trim function. The low trim function provides a "zero" correction similar to the zero trim function, but it does not require zero-based input.

Full trim is a two-point sensor calibration where two end-point pressures are applied, and all output is linearized between them. Always adjust the low trim value first to establish the correct offset. Adjustment of the high trim value provides a slope correction to the characterization curve based on the low trim value. The factory-established

characterization curve is not changed by this procedure. The trim values allow you to optimize performance over your specified measuring range at the calibration temperature.

4.3.1 Zero Trim

Note

The transmitter must be within three percent of the span away from zero (for zero-based spans) in order to calibrate with zero trim function. If the zero reading is not within three percent of the true zero, the transmitter will require iterative trims to move the zero within trimmable range.

Field Communicator

Calibrate the sensor with a Field Communicator using the zero trim function as follows:

Procedure

1. Vent the transmitter and attach a Field Communicator to the measurement loop.
2. From the *Home* screen, follow the Fast Key sequence shown.
3. Follow the commands provided by the Field Communicator to complete the zero trim adjustment.

AMS Device Manager

Procedure

1. Right click on the device and select **Calibrate**, Select **Zero trim** from the menu.
2. Select **Next** after setting the control loop to manual.
3. Select **Next** to acknowledge warning.
4. Select **Next** after applying appropriate pressure to sensor.
5. Select **Next** to acknowledge the loop can be returned to automatic control.
6. Select **Finish** to acknowledge the method is complete.

4.3.2 Full trim

Note

Use a pressure input source that is at least three times more accurate than the transmitter, and allow the input pressure to stabilize for ten seconds before entering any values.

Field Communicator

To calibrate the sensor with a Field Communicator using the full trim function, perform the following procedure:

Procedure

1. Assemble and power the entire calibration system including a transmitter, Field Communicator, power supply, pressure input source, and readout device.
2. From the *Home* screen, enter the Fast Key sequence shown.

3. Select **2: Lower sensor trim**.

Note

Select pressure input values so that low and high values are equal to or outside the 4 and 20 mA points. Do not attempt to obtain reverse output by reversing the high and low points. The transmitter allows approximately five percent URL deviation from the characterized curve established at the factory.

4. Follow the commands provided by the Field Communicator to complete the adjustment of the lower value.
5. Repeat the procedure for the upper value, replacing **2: Lower sensor trim** with **3: Upper sensor trim** in [Step 3](#).

AMS Device Manager

Procedure

1. Right click on the device and select **Calibrate**, then **Sensor trim** from the menu.
2. Select **Lower sensor trim**.
3. Select **Next** after setting the control loop to manual.
4. Select **Next** after applying appropriate pressure to sensor.
5. Select **Next** to acknowledge the loop can be returned to automatic control.
6. Select **Finish** to acknowledge the method is complete.
7. Right click on the device and select **Calibrate**. Select **Sensor trim** from the menu.
8. Select **Upper sensor trim** and repeat [Step 2-Step 5](#).

4.4 Recall factory trim

The recall factory trim commands allow the restoration of the as shipped factory settings of the sensor trim and analog output trim.

4.4.1 Recall factory trim—sensor trim

This command resets the transmitter sensor trim to the “as shipped” factory settings. The recall factory trim—sensor trim command can be useful for recovering from an inadvertent zero trim of an absolute pressure unit or inaccurate pressure source.

AMS Device Manager

Procedure

1. Right click on the device and select **Calibrate**, then **Recall Factory Trim** from the menu.
2. Select **Next** after setting the control loop to manual.
3. Select **Sensor trim** under **Trim to recall** and select **Next**.
4. Select **Next** to acknowledge restoration of trim values is complete.
5. Select **Next** to acknowledge the loop can be returned to automatic control.

6. Select **Finish** to acknowledge the method is complete.

4.4.2 Recall factory trim—*analog output*

This command resets the transmitter analog output trim to the “as shipped” factory settings. The recall factory trim—*analog output* command can be useful for recovering from an inadvertent trim, incorrect Plant Standard or faulty meter.

AMS Device Manager

Procedure

1. Right click on the device and select **Calibrate**, then **Recall Factory Trim** from the menu.
2. Select **Next** after setting the control loop to manual.
3. Select **Analog output trim** under *Trim to recall* and select **Next**.
4. Select **Next** to acknowledge restoration of trim values is complete.
5. Select **Next** to acknowledge the loop can be returned to automatic control.
6. Select **Finish** to acknowledge the method is complete.

4.5 Analog output trim

The Analog Output Trim commands allow you to adjust the transmitter’s current output at the 4 and 20 mA points to match the plant standards. This command adjusts the digital to analog signal conversion (see [Figure 4-1](#)).

4.5.1 Digital-to-analog trim

Field Communicator

To perform a digital-to-analog trim with a Field Communicator, perform the following procedure.

Procedure

1. From the **Home** screen, enter the Fast Key sequence shown. Select **OK** after setting the control loop to manual, see [Setting the loop to manual](#).
2. Connect an accurate reference ammeter to the transmitter at the *Connect Reference Meter* prompt. Connect in series with the signal loop, or shunt power through the reference meter at some point.
3. Select **OK** after connecting the reference meter.
4. Select **OK** at the *Setting fld dev* output to 4 mA prompt. The transmitter outputs 4.0 mA.
5. Record the actual value from the reference meter, and enter it at the *Enter meter value* prompt. The Field Communicator prompts you to verify whether or not the output value equals the value on the reference meter.

6. Select **1: Yes**, if the reference meter value equals the transmitter output value, or **2: No** if it does not.
 - a) If **1** is selected: **Yes**, proceed to [Step 7](#).
 - b) If **2** is selected: **No**, repeat [Step 5](#).
7. Select **OK** at the *Setting fld dev output to 20 mA* prompt, and repeat [Step 5](#) and [Step 6](#) until the reference meter value equals the transmitter output value.
8. Select **OK** after the control loop is returned to automatic control.

AMS Device Manager

Procedure

1. Right click on the device and select **Calibrate**, then **D/A Trim** from the menu.
2. Select **Next** after setting the control loop to manual.
3. Select **Next** after connecting the reference meter.
4. Select **Next** at the *Setting fld dev output to 4mA* screen.
5. Record the actual value from the reference meter, and enter it at the *Enter meter value* screen and select **Next**.
6. Select **Yes**, if the reference meter value equals the transmitter output value, or **No** if it does not. Select **Next**.
 - a) If **Yes** is selected, proceed to [Step 7](#).
 - b) If **No** is selected, repeat [Step 5](#).
7. Select **Next** at the *Setting fld dev output to 20 mA* screen.
8. Repeat [Step 5](#) - [Step 6](#) until the reference meter equals the transmitter output value.
9. Select **Next** to acknowledge the loop can be returned to automatic control.
10. Select **Finish** to acknowledge the method is complete.

4.5.2 Digital-to-analog trim using alternate scale

The scaled D/A trim command matches the 4 and 20 mA points to a user selectable reference scale other than 4 and 20 mA (e.g. 1 to 5 volts if measuring across a 250 ohm load, or 0 to 100 percent if measuring from a Distributed Control System [DCS]). To perform a scaled D/A trim, connect an accurate reference meter to the transmitter and trim the output signal to scale, as outlined in the output trim procedure.

Note

Use a precision resistor for optimum accuracy. If you add a resistor to the loop, ensure the power supply is sufficient to power the transmitter to a 20 mA output with additional loop resistance.

AMS Device Manager

Right click on the device and choose **Calibrate** then **Scaled D/A trim** from the menu.

Procedure

1. Select **Next** after setting the control loop to manual.
2. Select **Change to change scale**, select **Next**.
3. Enter **Set scale-Lo output value**, select **Next**.
4. Enter **Set scale-Hi output value**, select **Next**.
5. Select **Next** to proceed with Trim.
6. Select **Next** after connecting the reference meter.
7. Select **Next** at the *Setting fld dev output to 4 mA* screen.
8. Record the actual value from the reference meter, and enter it at the *Enter meter value* screen and select **Next**.
9. Select **Yes**, if the reference meter value equals the transmitter output value, or **No** if it does not. Select **Next**.
 - a) If **Yes** is selected, proceed to [Step 10](#).
 - b) If **No** is selected, repeat [Step 8](#).
10. Select **Next** at the *Setting fld dev output to 20 mA* screen.
11. Repeat [Step 8](#) - [Step 9](#) until the reference meter equals the transmitter output value.
12. Select **Next** to acknowledge the loop can be returned to automatic control.
13. Select **Finish** to acknowledge the method is complete.

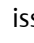
5 Troubleshooting

5.1 Overview

Table 5-1 provides summarized maintenance and troubleshooting suggestions for the most common operating problems.

If you suspect malfunction despite the absence of any diagnostic messages on the Field Communicator display, follow the procedures described here to verify that transmitter hardware and process connections are in good working order. Always deal with the most likely checkpoints first.

5.2 Safety messages

Procedures and instructions in this section may require special precautions to ensure the safety of the personnel performing the operations. Information that raises potential safety issues is indicated by a warning symbol (). Refer to the following safety messages before performing an operation preceded by this symbol.

WARNING

Transmitters located in hazardous areas should be installed in accordance with local codes and requirements for that area.

Use appropriately rated Ex adapters, blanking elements, and glands during installation.

Keep process insulation at least 1-in. (25 mm) from transmitter connection.

CAUTION

Static electricity can damage sensitive components.

Observe safe handling precautions for static-sensitive components.

Table 5-1: Troubleshooting

Symptom	Corrective actions
Transmitter milliamp reading is zero	Verify power is applied to signal terminals.
	Check power wires for reversed polarity.
	Verify terminal voltage is 10 to 42.4 VDC.
Transmitter Not Communicating with Field Communicator	Verify the output is between 4 and 20 mA or saturation levels.
	Verify clean dc Power to transmitter (max ac noise 0.2 volts peak to peak).
	Check loop resistance, 250 Ω minimum (PS voltage -transmitter voltage/ loop current).
	Check if unit is addressed properly.

Table 5-1: Troubleshooting (continued)

Symptom	Corrective actions
Transmitter milliamp reading is low or high	Verify applied pressure.
	Verify 4 and 20 mA range points.
	Verify output is not in alarm condition.
	Verify if 4–20 mA output trim is required.
Transmitter will not respond to changes in applied pressure	Check test equipment.
	Check impulse piping or manifold for blockage.
	Verify applied pressure is between the 4 and 20 mA set points.
	Verify output is not in alarm condition.
	Verify transmitter is not in Loop Test mode.
Digital Pressure Variable reading is low or high	Check test equipment (verify accuracy).
	Check impulse piping for blockage or low fill in wet leg.
	Verify transmitter is calibrated properly.
	Verify pressure calculations for application.
Digital Pressure Variable reading is erratic	Check application for faulty equipment in pressure line.
	Verify transmitter is not reacting directly to equipment turning on/off.
	Verify damping is set properly for application.
Milliamp reading is erratic	Verify power source to transmitter has adequate voltage and current.
	Check for external electrical interference.
	Verify transmitter is properly grounded.
	Verify shield for twisted pair is only grounded at one end.
HART® message reading: “Brown-out condition detected.”	Verify power source to transmitter has adequate voltage and current.
	Check loop resistance, 250 Ω minimum (PS voltage -transmitter voltage/ loop current).
HART message reading: “Configuration not update due to brown-out.”	Cycle power and repeat configuration change.

5.2.1 Service support

To expedite the return process outside of the United States, contact the nearest Emerson representative.

Within the United States, call the Rosemount™ National Response Center using the 1-800-654-RSMT (7768) toll-free number. This center, available 24 hours a day, will assist you with any needed information or materials.

The center will ask for product model and serial numbers, and will provide a Return Material Authorization (RMA) number. The center will also ask for the process material to which the product was last exposed.

⚠ CAUTION

Individuals who handle products exposed to a hazardous substance can avoid injury if they are informed of and understand the hazard. If the product being returned was exposed to a hazardous substance as defined by OSHA, a copy of the required Material Safety Data Sheet (MSDS) for each hazardous substance identified must be included with the returned goods.

Rosemount National Response Center representatives will explain the additional information and procedures necessary to return goods exposed to hazardous substances.

A Specification and Reference Data

A.1 Product certifications

To view current Rosemount™ 4600 Product Certifications, follow these steps:

Procedure

1. Go to Emerson.com/Rosemount/Rosemount-4600.
2. Scroll as needed to the green menu bar and click **Documents & Drawings**.
3. Click **Manuals & Guides**.
4. Select the appropriate Quick Start Guide.

A.2 Ordering Information, Specifications, and Drawings

To view current Rosemount 4600 Ordering Information, Specifications, and Drawings, follow these steps:

Procedure

1. Go to Emerson.com/Rosemount/Rosemount-4600.
2. Scroll as needed to the green menu bar and click **Documents & Drawings**.
3. For installation drawings, click **Drawings & Schematics** and select the appropriate document.
4. For ordering information, specifications, and dimensional drawings, click **Data Sheets & Bulletins** and select the appropriate Product Data Sheet.

For more information: www.emerson.com

©2022 Emerson. All rights reserved.

Emerson Terms and Conditions of Sale are available upon request. The Emerson logo is a trademark and service mark of Emerson Electric Co. Rosemount is a mark of one of the Emerson family of companies. All other marks are the property of their respective owners.

ROSEMOUNT™

