

Instructions to printer

DO NOT PRINT THIS PAGE

This document is intended to be printed in **color** as a 5.5 (width) x 6.5 inch (length) booklet with stapled binding.

Use high-quality, glossy 20lb (75 g/m²) paper.

Print double-sided. Fold sheet of 8.5" x 11" in two, trim length and staple spine.

European version can use A4 in place of 8.5" x 11".

RXi HMI Quick Start Guide

GFK-3233A

Jan 2022



Contents

Contents	ii
Regulatory Information	1
Intended Use	1
Connecting Your Device	2
RXi HMI Connectors.....	2
Step 1: Connect the Input Power (24V DC-in)	2
Step 2: Connect Your Display	3
Step 3: Connect Your Network Devices	4
Step 4: Connect Your Mouse and Keyboard	4
Step 5: Connect Your Serial Devices (UART)	5
RXi HMI Initial Start Up	6
RXi HMI Windows Activation.....	12
Additional Information	15
General Contact Information	16

Regulatory Information

The FCC requires the following note to be published according to the FCC guidelines:

NOTE: *This device complies with part 15 of the FCC Rules. Operation is subject to the following two conditions: (1) This device may not cause harmful interference, and (2) this device must accept any interference received, including interference that may cause undesired operation.*

CAUTION

Changes or modifications not expressly approved by the party responsible for compliance could void the user's authority to operate the equipment.

Industry Canada requires the following to be published: CAN ICES-3 (A)/NMB-3 (A).

Intended Use

The RXi HMI is intended for use in industrial environments only. Adherence to supplied documentation is part of the intended use. Installation, commissioning, and maintenance shall be carried out by qualified personnel. For more information, please consult GFK-3163, *RXi Installation and Maintenance Requirements*.

Connecting Your Device

The rear panel I/O port arrangement consists of the following:

RXi HMI Connectors

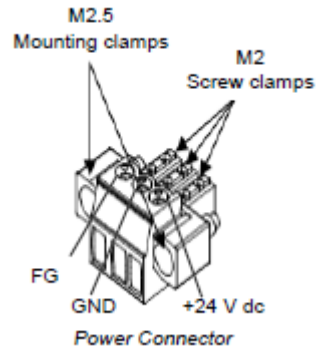
Figure 1: Rear Panel Arrangement



Step 1: Connect the Input Power (24V DC-in)

To connect to power, follow these steps:

1. Verify that the power cable is not energized.
2. Loosen the screw clamps on the mating power connector.
3. Strip the insulation from the power cables.
4. Secure the power cable to the mating connector, noting polarity, and tighten the screw clamps. The torque for the attaching screws is 0.3 Nm (2.26 in-lb).



5. Apply dc power to the unit. During normal startup and operation, the LED status indicator displays as follows:
 - Solid amber while the RXi HMI unit is starting up
 - Solid green during normal operation

Be sure to connect a DC power cord to this 3-pin power connector. Using a voltage out of the range may fail to boot the system or cause damage to the system board. The recommended connector is *Dinkle EC350VM-03P*.

Step 2: Connect Your Display

The RXi HMI uses a DisplayPort to connect to a display device such as a computer monitor. The DisplayPort connection will be used to transmit both audio and video. If additional configuration is required, visit the Chipset menu in the device BIOS on startup.

Operation Status LEDs (Screen)

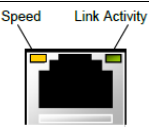
RXi HMI has a tri-color LED built into the screen that provides visual indication of the operation status.

LED State	System State
Amber, Solid	Operating system starting
Green, Solid	Normal operating state
Green, Blinking	Backlight off
Red, Blinking	Backlight failure
Off	Power not applied to the unit

Step 3: Connect Your Network Devices

The RXi HMI has Four Base-T Ethernet Ports. Use the LAN ports to connect to a local area network through a network hub or router. If additional configuration is required, visit the Wakeup Configuration menu in the device BIOS on startup.

Ethernet Port Operation LEDs

	LED	LED State	Operating State
	Speed	Yellow, ON	10/100/1000
	Link Activity	Green, ON	Link Status

Step 4: Connect Your Mouse and Keyboard

The RXi HMI features two USB 2.0 (Type-A) ports for mouse and keyboard. (There are also two USB 3.0 (Type-A) ports for external storage devices.) If configure the device to wake on keyboard/mouse function visit the Wakeup Configuration menu in the device BIOS on startup.

Step 5: Connect Your Serial Devices (UART)

The RXi HMI features two serial port connections. Connect these devices using the pin-out configuration seen in

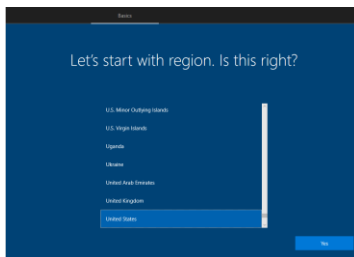
Table 1: Serial Pin-Out Configuration

Serial Connection	Pin	Function
RS232	1	TXD
	2	RXD
	3	RTS
	4	CTS
	5	GND
RS485	6	TX+
	7	TX-
	8	RX+
	9	RX-
	10	GND

RXi HMI Initial Start Up

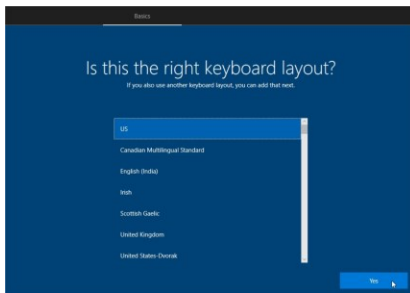
1. Select the region and then click **Yes**.

Figure 2: Region Selection



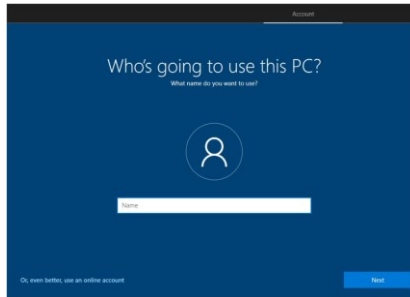
2. Select the keyboard layout desired and click **Yes**. If desired, the next screen will prompt the user for a second keyboard layout.

Figure 3: Keyboard Layout Selection



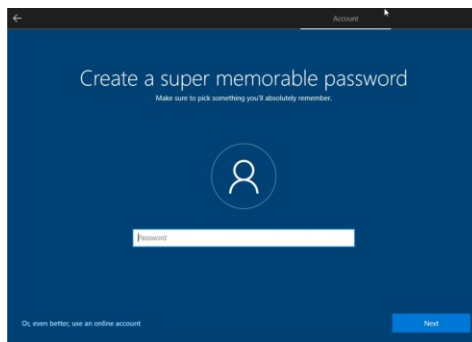
3. Enter the username for this account and click **Next**.

Figure 4: Local User Account Creation Screen



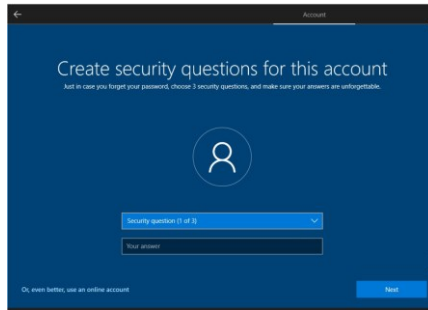
4. Create a password for this user account. The next screen will ask the user to confirm their entered password.

Figure 5: Create Password



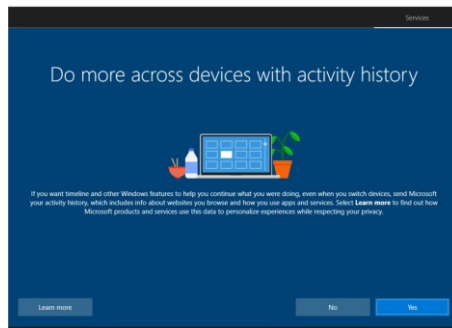
5. Select and answer three security questions. Click **Next** to proceed.

Figure 6: Security Questions Setup



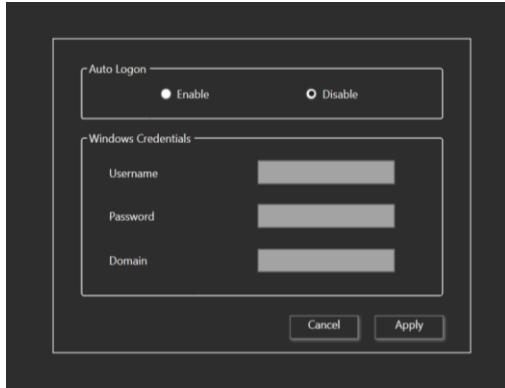
6. The setup wizard will prompt the user to enable Activity History. Select Yes and proceed with Windows configuration. **This may take several minutes.**

Figure 7: Activity History



7. Once RXi HMI is configured and ready to use, the **RXi Auto Logon** tool will run automatically in full-screen mode as shown in .

Figure 8: RXi HMI Auto Logon Tool

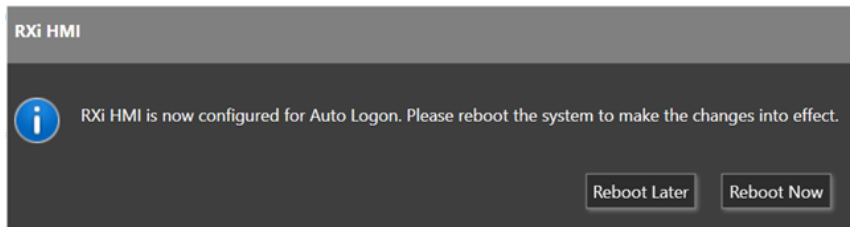


8. The following steps need to be performed to enable the Auto logon process for the current user:
 - a) Select **Enable** option to login into RXi HMI without credentials on every reboot.
 - b) Enter Username, Password and Domain (if available) and click **Apply** button. If the entered credentials are valid, then Auto Logon will be enabled for the specific user. The user will be prompted to either Reboot Now or defer to later as shown in .
 - c) If the entered credentials are not valid , appropriate failure message will be shown to the user.
-

Tip

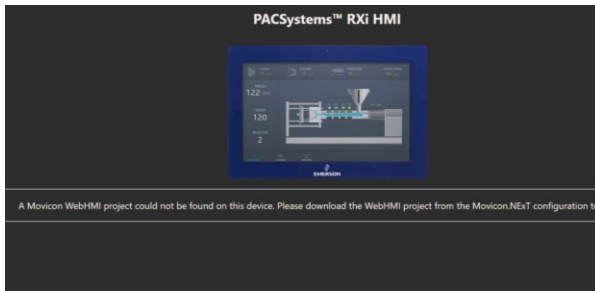
The Auto Logon feature can be enabled or disabled after subsequent startups by launching the **RXi HMI OI Utilities** from the desktop icon and navigating to the **Auto Logon** page after application startup.

Figure 9: RXi HMI Reboot Prompt Message



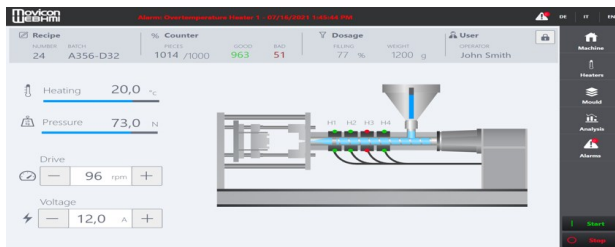
- Once login process is complete, a web browser will run automatically to display the message that a Movicon WebHMI project could not be found on the device. Download the WebHMI project from the Movicon.NEXt configuration tool.

Figure 10: Default Startup Behavior Screen on RXi HMI



The WebHMI screen will display automatically in chrome browser with full-screen mode after every reboot if the project is already present.

Figure 11: WebHMI Screen



RXi HMI Windows Activation

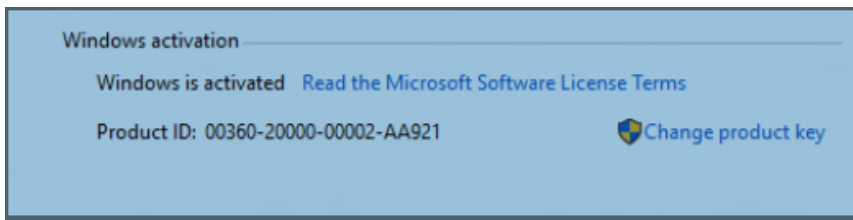
The preloaded Windows 10 IOT Enterprise image on RXi HMI is activated by **Default**. The product key is embedded with the Windows.

By default, the user must enable each device for activation.

Each device is subject to one of three potential states :

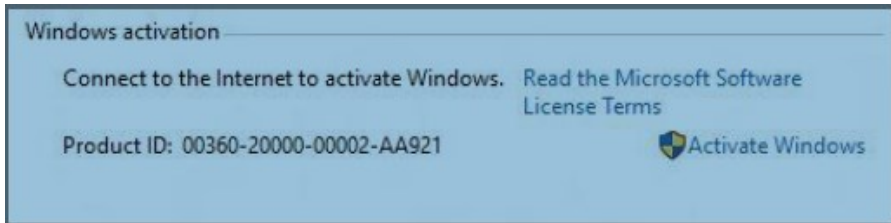
- **Activated state** : If the device is connected to the Internet, the device will automatically activate over the Internet (Figure 12).

Figure 12: Activated State



- **Deferred activation state** : If the device is not connected to the Internet, it will remain in a **deferred activation state** (Figure 13).

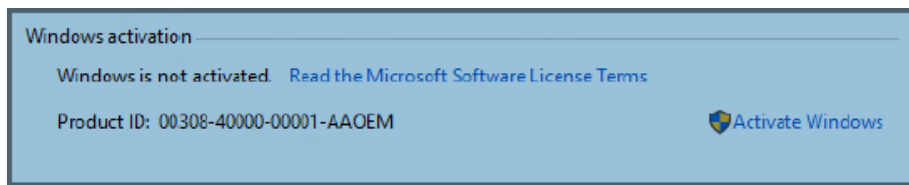
Figure 13: Deferred Activation state



Note : The Windows Activation dialog box will display **Connect to the Internet to Activate Windows**, but it may not display the **Activate Windows** icon nor reduce functionality.

Not Activated State : If the device connects to the Internet and the activation attempt fails due to an invalid licensing key or one that has exceeded its activation allotment, it will enter a Not Activated state.

Figure 14: Not Activated State



After a device has been activated, it will remain activated unless a significant change triggers a need to reactivate the device, such as a motherboard replacement or completely reimaging the device.

Additional Information

GFK-3231

GFK-3232

GFK-3233

RXi HMI User Manual

RXi HMI Secure Deployment Guide

RXi HMI Quick Start Guide

General Contact Information

Website

<http://www.emerson.com/industrial-automation-controls/>

Technical Support

<http://www.emerson.com/industrial-automation-controls/support>

All Rights Reserved.

We reserve the right to modify or improve the designs or specifications of the products mentioned in this manual at any time without notice. Emerson does not assume responsibility for the selection, use or maintenance of any product. Responsibility for proper selection, use and maintenance of any Emerson product remains solely with the purchaser.

©2022 Emerson Electric Co.

