

# RHTEMP1000IS

## INTRINSICALLY SAFE HUMIDITY & TEMPERATURE DATA LOGGER



### Features

- Software Battery Life Indicator
- Intrinsically Safe Certified
- 316 Stainless Steel Enclosure
- Small, Sleek Design
- Fast Response Time
- Engraved Label
- NIST Traceable
- CE Compliant

### Benefits

- Faster Downloads (1 min. full memory)
- Docking Station Communication
- Easily Identify Low Battery Voltage

### Applications

- EtO Sterilization
- Environmental Studies
- Hostile Environment Monitoring
- Medical & Pharmaceutical

The new RHTemp1000IS is an Intrinsically Safe humidity and temperature data logger. The RHTemp1000IS is FM Approvals certified as Intrinsically Safe for Class 1, Division 1, groups A, B, C, and D and non-incendive for Class 1, Division 2 groups A, B, C, D and hazardous environments. This certification makes the device ideal for EtO Sterilization, environmental studies, and numerous other hostile environment applications.

One of the enhancements to the RHTemp1000IS is the stainless steel enclosure with engraved serial number and device name. The device interfaces with the IFC400 or the IFC406 (sold separately) docking station and can be placed directly into the dock for full communications. No more removal of end-caps to download data! The small size of the RHTemp1000IS, allows it to be placed in remote or hard to reach locations. The device now features a battery life indicator allowing users to easily identify low voltage and change batteries when required. This feature maximizes the use of your battery life and is a cost saving efficiency. The RHTemp1000IS can hold up 16,350 humidity and temperature measurements. Its real time clock ensures that all the data is time and date stamped.

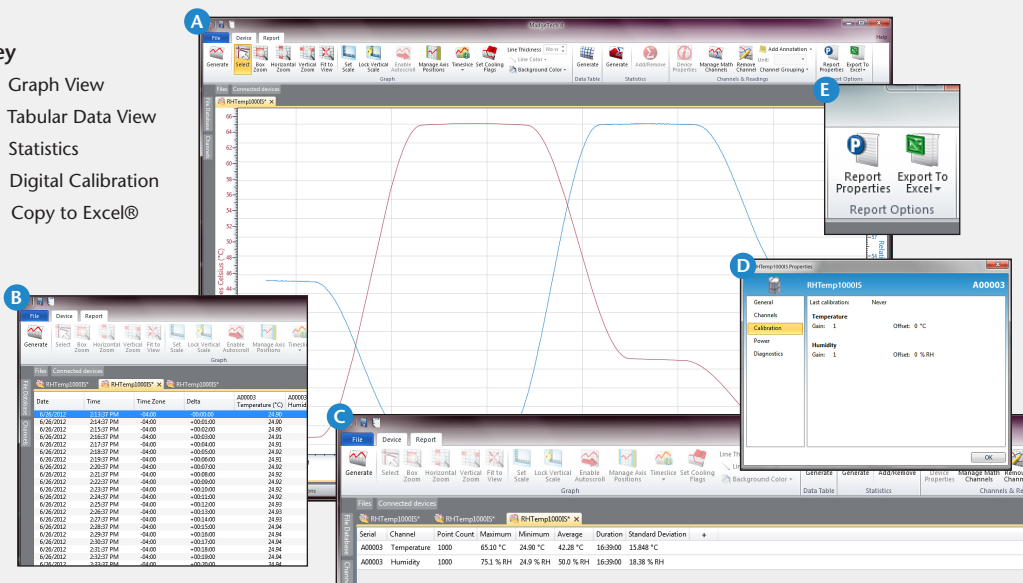
The MadgeTech Software is a powerful, analytic tool, available to download for free from our website [www.madgetech.com](http://www.madgetech.com). Data can be viewed in graphical or tabular formats and summary and statistics views are available for further analysis.



## MADGETECH DATA LOGGER SOFTWARE

### Key

- A** Graph View
- B** Tabular Data View
- C** Statistics
- D** Digital Calibration
- E** Copy to Excel®



### Software Features:

- Multiple graph overlay
- Statistics
- Digital calibration
- Zoom in/ zoom out
- Lethality equations (F0, PU)
- Mean Kinetic Temperature
- Full time zone support
- Data annotation
- Min./Max./Average lines
- Data table view
- Automatic report generation
- Summary view
- Multilingual

# RHTEMP1000IS SPECIFICATIONS\*

## Temperature

<b>Temperature Sensor:</b>	Resistance Temperature Detector (RTD)
<b>Temperature Range:</b>	-40 °C to +80 °C (-40 °F to +176 °F)
<b>Temperature Resolution:</b>	0.01 °C
<b>Temperature Response Time in Air:</b>	t <sub>63</sub> - 8 minutes to 63% of change t <sub>90</sub> - 68 minutes to 90% of change
<b>Calibrated Accuracy:</b>	±0.5 °C (0 °C to 55 °C)

## Humidity

<b>Humidity Sensor:</b>	Capacitive Polymer
<b>Humidity Range:</b>	0 %RH to 100 %RH (non-condensing)
<b>Humidity Resolution:</b>	0.1 %RH
<b>Humidity Response Time in Air:</b>	t <sub>63</sub> - 30 seconds to 63% of change t <sub>90</sub> - 2 minutes to 90% of change
<b>Calibrated Accuracy:</b>	±3.0 %RH maximum

## General

<b>Start Modes:</b>	Software programmable immediate start or delay start up to 24 months in advance
<b>Real Time Recording:</b>	May be used with PC to monitor and record data in real time
<b>Memory:</b>	16,350 readings per channel
<b>Password Protection:</b>	Yes
<b>Reading Rate:</b>	1 reading every second up to 1 reading every 24 hours

\*SPECIFICATIONS ARE SUBJECT TO CHANGE WITHOUT NOTICE. SPECIFIC WARRANTY REMEDY LIMITATIONS APPLY. CALL 1-603-456-2011 OR GO TO WWW.MADGETECH.COM FOR DETAILS.

<b>Calibration:</b>	Digital calibration through software
<b>Calibration Date:</b>	Automatically recorded within device
<b>Memory Wrap:</b>	Yes
<b>Data Format:</b>	Date and time stamped °C, °F, K, °R; %RH, mg/mL, Dew Point
<b>Battery Life:</b>	2 years typical at 25 °C (15 minute reading rate)
<b>Battery Type:</b>	3.6V lithium battery included, <b>user replaceable</b>
<b>Time Accuracy:</b>	±1 minute/month at 25 °C
<b>Required Interface Package:</b>	IFC400 or IFC406
<b>Computer Interface:</b>	USB (interface cable required); 125,000 baud
<b>Operating System Compatibility:</b>	Windows XP SP3/Vista/Windows 7/Windows 8
<b>MadgeTech Software Compatibility:</b>	<ul style="list-style-type: none"> <li>Standard Software version 4.1.0.2 or later</li> <li>Secure Software version 4.1.3.0 or later</li> </ul>
<b>Operating Environment:</b>	-40 °C to +80 °C (-40 °F to +176 °F), 0 %RH to 100 %RH (non-condensing)
<b>Dimensions:</b>	1.7 in x 0.97 in x 0.97 in (42 mm x 24.6 mm x 24.6 mm)
<b>Weight:</b>	2.3 oz (65 g)
<b>Material:</b>	316 Stainless Steel/PEEK
<b>Approvals:</b>	CE; Intrinsically Safe for Class I, Div 1, groups ABCD; Non-incendive for Class I, Division 2, groups ABCD Hazardous (Classified) Locations

**BATTERY WARNING: FIRE, EXPLOSION AND SEVERE BURN HAZARD. DO NOT RECHARGE, DISASSEMBLE, HEAT ABOVE 100 °C (212 °F), INCINERATE, CRUSH, OR EXPOSE CONTENTS TO WATER.**

## ORDERING INFORMATION

MODEL	DESCRIPTION	PRICE (U.S.)
RHTEMP1000IS	Intrinsically Safe Humidity and Temperature Data logger	\$399.00
IFC400	Docking station with USB cable, software, and manual	\$120.00
IFC406	6 Port, Multiplexer docking station with USB cable, software and manual	\$549.00
*NIST	NIST Traceable Calibration Certificate	\$90.00
TL-2150/S	Replacement battery for RHTemp1000IS	\$10.00

**ASK ABOUT OUR OTHER DATA LOGGERS**

- Temperature
- Humidity
- Pressure
- pH
- Level
- Shock
- LCD Display
- Pulse/Event/State
- Current
- Voltage
- Wireless
- Intrinsically Safe
- Spectral Vibration
- Motion

For Quantity Discounts call 603-456-2011 or email [sales@madgetech.com](mailto:sales@madgetech.com)

\*To order the product with the NIST certificate add *-CERT* to the end of the part number and add \$90.00 to the price.