

# RHTemp1000IS

## INTRINSICALLY SAFE HUMIDITY & TEMPERATURE DATA LOGGER



### Features

- Software Battery Life Indicator
- Intrinsically Safe Certified
- 316 Stainless Steel Enclosure
- Small, Sleek Design
- Fast Response Time
- Engraved Label
- CE Compliant

### Benefits

- Faster Downloads (1 min. full memory)
- Docking Station Communication
- Easily Identify Low Battery Voltage

### Applications

- EtO Sterilization
- Environmental Studies
- Hostile Environment Monitoring
- Medical & Pharmaceutical

The new RHTemp1000IS is an Intrinsically Safe humidity and temperature data logger. The RHTemp1000IS is FM Approvals certified as Intrinsically Safe for Class 1, Division 1, groups A, B, C, and D and non-incendive for Class 1, Division 2 groups A, B, C, D and hazardous environments. This certification makes the device ideal for EtO Sterilization, environmental studies, and numerous other hostile environment applications.



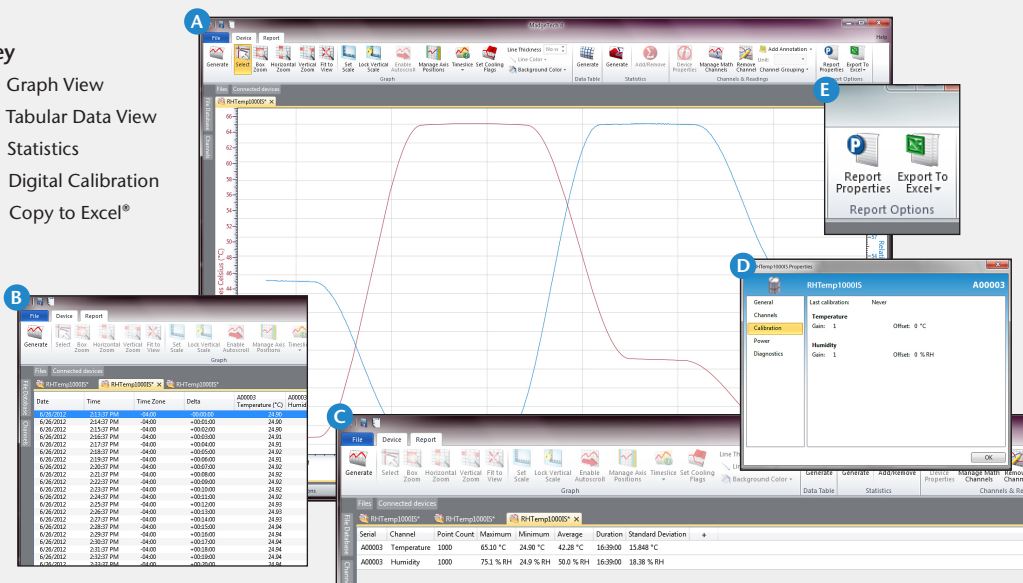
One of the enhancements to the RHTemp1000IS is the stainless steel enclosure with engraved serial number and device name. The device can be started and stopped directly from your computer and its small, sleek size allows it to fit almost anywhere. The RHTemp1000IS makes data retrieval quick and easy. Simply insert the device into the IFC400 or the IFC406 USB docking station (sold separately) and our user-friendly software does the rest. The small size of the RHTemp1000IS, allows it to be placed in remote or hard to reach locations. The device now features a battery life indicator allowing users to easily identify low voltage and change batteries when required. This feature maximizes the use of your battery life and is a cost saving efficiency. The RHTemp1000IS can hold up 16,384 humidity and temperature measurements. Its real time clock ensures that all the data is time and date stamped.

The MadgeTech Software is a powerful, analytic tool, available to download for free from our website [madgetech.com](http://madgetech.com). Data can be viewed in graphical or tabular formats and summary and statistics views are available for further analysis.

## MADGETECH DATA LOGGER SOFTWARE

### Key

- A** Graph View
- B** Tabular Data View
- C** Statistics
- D** Digital Calibration
- E** Copy to Excel®



### Software Features:

- Multiple graph overlay
- Statistics
- Digital calibration
- Zoom in/ zoom out
- Lethality equations (F0, PU)
- Mean Kinetic Temperature
- Full time zone support
- Data annotation
- Min./Max./Average lines
- Data table view
- Automatic report generation
- Summary view
- Multilingual

# RHTEMP1000IS SPECIFICATIONS\*

\*Specifications are subject to change without notice. Specific warranty remedy limitations apply. Call (603) 456-2011 or go to [madgetech.com](http://madgetech.com) for details.

## Temperature

<b>Temperature Sensor:</b>	Resistance Temperature Detector (RTD)
<b>Temperature Range:</b>	-40 °C to +80 °C (-40 °F to +176 °F)
<b>Temperature Resolution:</b>	0.01 °C
<b>Temperature Response Time in Air:</b>	t <sub>63</sub> - 8 minutes to 63% of change t <sub>90</sub> - 68 minutes to 90% of change
<b>Calibrated Accuracy:</b>	±0.5 °C (0 °C to 55 °C)

## Humidity

<b>Humidity Sensor:</b>	Capacitive Polymer
<b>Humidity Range:</b>	0 %RH to 100 %RH (non-condensing)
<b>Humidity Resolution:</b>	0.1 %RH
<b>Humidity Response Time in Air:</b>	t <sub>90</sub> - 2 minutes to 90% of change
<b>Calibrated Accuracy:</b>	±3.0 %RH maximum
<b>Specified Accuracy Range:</b>	25 %RH to 75 %RH +20 °C to +40 °C Hysteresis Error 1 % Typical, 3% Maximum

## General

<b>Start Modes:</b>	Software programmable immediate start or delay start up to 24 months in advance
<b>Real Time Recording:</b>	May be used with PC to monitor and record data in real time
<b>Memory:</b>	16,384 readings per channel
<b>Password Protection:</b>	Yes
<b>Reading Rate:</b>	1 reading every second up to 1 reading every 24 hours

<b>Calibration:</b>	Digital calibration through software
<b>Calibration Date:</b>	Automatically recorded within device
<b>Memory Wrap:</b>	Yes
<b>Data Format:</b>	Date and time stamped °C, °F, K, °R ; %RH, mg/mL, Dew Point
<b>Battery Life:</b>	2 years typical at 25 °C (15 minute reading rate)
<b>Battery Type:</b>	3.6V lithium battery included, <b>user replaceable</b>
<b>Time Accuracy:</b>	±1 minute/month at 25 °C
<b>Required Interface Package:</b>	IFC400 or IFC406
<b>Computer Interface:</b>	USB (interface cable required); 125,000 baud
<b>Operating System Compatibility:</b>	Windows XP SP3 or later
<b>MadgeTech Software Compatibility:</b>	<ul style="list-style-type: none"> <li>Standard Software version 4.1.0.2 or later</li> <li>Secure Software version 4.1.3.0 or later</li> </ul>
<b>Operating Environment:</b>	-40 °C to +80 °C (-40 °F to +176 °F), 0 %RH to 100 %RH (non-condensing)
<b>Dimensions:</b>	1.7 in x 0.97 in x 0.97 in (42 mm x 24.6 mm x 24.6 mm)
<b>Weight:</b>	2.3 oz (65 g)
<b>Material:</b>	316 Stainless Steel/Radel
<b>Approvals:</b>	CE; Intrinsically Safe for Class I, Div 1, groups ABCD; Non-incendive for Class I, Division 2, groups ABCD Hazardous (Classified) Locations

**BATTERY WARNING: FIRE, EXPLOSION AND SEVERE BURN HAZARD. DO NOT RECHARGE, DISASSEMBLE, HEAT ABOVE 100 °C (212 °F), INCINERATE, CRUSH, OR EXPOSE CONTENTS TO WATER.**

## ORDERING INFORMATION

MODEL	PART NUMBER	DESCRIPTION
RHTEMP1000IS	901747-00	Intrinsically Safe Humidity and Temperature Data logger
IFC400	900319-00	Docking station with USB cable
IFC406	900325-00	6 Port, Multiplexer docking station with USB cable
TL-2150/S	901745-00	Replacement battery for RHTemp1000IS

ASK ABOUT  
OUR OTHER  
DATA  
LOGGERS

Temperature  
Humidity  
Pressure  
pH  
Level  
Shock  
LCD Display  
Pulse/Event/State  
Current  
Voltage  
Wireless  
Intrinsically Safe  
Spectral Vibration  
Motion

For Quantity Discounts call (603) 456-2011 or email [sales@madgetech.com](mailto:sales@madgetech.com)