

# OCTVOLT V2

## 8-CHANNEL VOLTAGE DATA LOGGER



### Features

- Real-time operation
- Programmable engineering units
- Up to 4 Hz Reading Rate
- Compact
- External Power or User Replaceable Battery
- Pushbutton or Programmable Start Time
- Title Channels
- Calibration Certificate included

### Applications

- Low level signal monitoring
- Medical/Pharmaceutical
- Battery studies
- Power supply monitoring
- Process plants
- Environmental studies
- Research and development
- Replace costly strip chart recorders



The OctVolt V2 is an 8-channel, battery powered, DC voltage data logger with reading rate up to 4 Hz reading rate. It can measure and record up to 174,592 readings per channel. To maximize memory capacity, users can enable or disable channels. For easy identification, each channel can be named with up to a ten digit title.

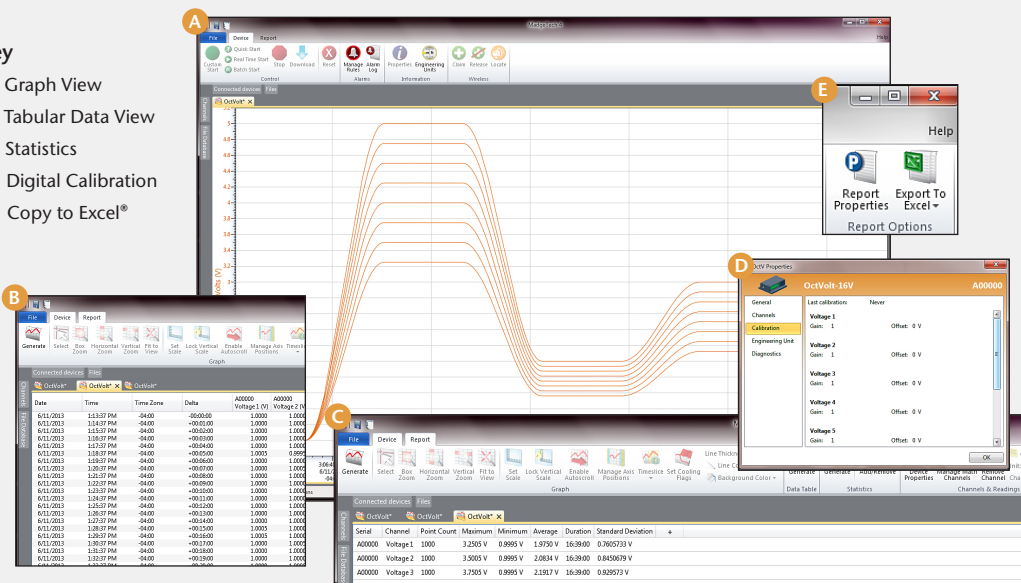
This easy to use device features a 1 year battery life, user replaceable battery and programmable engineering units. The storage medium is non-volatile solid state memory, providing maximum data security even if the battery becomes discharged.

Using the MadgeTech Software, starting, stopping and downloading from the OctVolt V2 is simple and easy. Graphical, tabular and summary data is provided for analysis and data can be viewed in multiple units, using the Engineering Units function. The data can also be automatically exported to Excel® for further calculations.

## MADGETECH DATA LOGGER SOFTWARE

### Key

- A** Graph View
- B** Tabular Data View
- C** Statistics
- D** Digital Calibration
- E** Copy to Excel®



### Software Features:

- Multiple graph overlay
- Statistics
- Digital calibration
- Zoom in/ zoom out
- Lethality equations (F0, PU)
- Mean Kinetic Temperature
- Full time zone support
- Data annotation
- Min./Max./Average lines
- Data table view
- Automatic report generation
- Summary view
- Multilingual

# OCTVOLT2 SPECIFICATIONS\*

\*Specifications are subject to change without notice. Specific warranty remedy limitations apply. Call (603) 456-2011 or go to [madgetech.com](http://madgetech.com) for details.

<b>Input Connection:</b>	8 removable screw terminals		
<b>Model:</b>	<b>160 mV</b>	<b>3.2 V</b>	<b>32 V</b>
<b>Voltage Range:</b>	±160 mV	±3.2 V	-8 V to +32 V
<b>Voltage Resolution:</b>	0.15 µV	0.004 mV	0.004 mV
<b>Calibrated Accuracy:</b>	±0.05 %FSR	±0.05 %FSR	±0.05 %FSR
<b>Input Impedance:</b>	1 MΩ	125 kΩ	125 kΩ
<b>Overload Protection:</b>	±3.5 V for 10 seconds	±50 V	±50 V
<b>Temperature Coefficient:</b>	25 ppm/°C	25 ppm/°C	25 ppm/°C
<b>Analog Conversion Time:</b>	150 ms		
<b>Frequency Rejection:</b>	50 Hz - 60 Hz		
<b>Specified Accuracy Range:</b>	Nominal range @ 25 °C		
<b>Engineering Units:</b>	Native Measurement units can be scaled to display measurement units of another type. This is useful when monitoring voltage outputs from different types of sensors such as temperature, CO2, flow rate and more.		
<b>Start Modes:</b>	Software programmable immediate start or delay start up to six months in advance		

<b>Memory:</b> (all 8 channels enabled)	174,592 readings per channel
<b>Reading Rate:</b>	4 Hz up to 1 reading every 24 hours
<b>Real Time Recording:</b>	May be used with PC to monitor and record data in real time
<b>Calibration:</b>	Digital calibration through software
<b>Calibration Date:</b>	Automatically recorded within device
<b>Battery Type:</b>	9V lithium or alkaline battery included; <b>user replaceable</b>
<b>Battery Life:</b>	1 year typical
<b>Data Format:</b>	Date and time stamped V, mV, µV, engineering units specified through software
<b>Time Accuracy:</b>	±1 minute/month
<b>Computer Interface:</b>	USB (Interface cable required); 115,200 baud
<b>Software:</b>	Windows XP SP3 or later MadgeTech 4 software, version 4.2.12.0 or later
<b>Operating Environment:</b>	-20 °C to +60 °C, 0 %RH to 95 %RH non-condensing
<b>Dimensions:</b>	2.7 in x 7.2 in x 1.3 in (69 mm x 184 mm x 32 mm)
<b>Weight:</b>	17 oz (490 g)

**BATTERY WARNING:** BATTERY MAY LEAK, FLAME OR EXPLODE IF DISASSEMBLED, SHORTED, CHARGED, CONNECTED TOGETHER, MIXED WITH USED OR OTHER BATTERIES, EXPOSED TO FIRE OR HIGH TEMPERATURE. DISCARD USED BATTERY PROMPTLY. KEEP OUT OF REACH OF CHILDREN.

## ORDERING INFORMATION

MODEL	PART NUMBER	DESCRIPTION
OCTVOLT2-160MV	902075-00	±160 mV 8-Channel Voltage Data Logger
OCTVOLT2-3.2V	902077-00	±3.2 V 8-Channel Voltage Data Logger
OCTVOLT2-32V	902079-00	-8 V to +32 V 8-Channel Voltage Data Logger
IFC200	900298-00	Software, manual and USB interface cable
U9VL-J	901804-00	Replacement battery for OctVolt2

ASK ABOUT  
OUR OTHER  
DATA  
LOGGERS

Temperature

Humidity

Pressure

pH

Level

Shock

LCD Display

Pulse/Event/State

Current

Voltage

Wireless

Intrinsically Safe

Spectral Vibration

Motion

For Quantity Discounts call (603) 456-2011 or email [sales@madgetech.com](mailto:sales@madgetech.com)