



# **Handheld LPC Data Retrieval Software for Windows MODEL S388-70**

## **Operation Manual**

Read this manual carefully and understand the warnings described in this manual before operating the product.  
Keep this manual handy for ready reference.

**Kanomax Japan, Inc.**



02001

2007.01

**NOTICE:**

1. The copyright of this software belongs to Kanomax Instrument (Shenyang) Ltd.
2. Any unauthorized duplication of the product, in whole or in part, without written consent from Kanomax Inc. is strictly prohibited.
3. Purchase of one set of software per computer is required.
4. Contents of the Operation Manual are subject to change without notice.

# Table of Contents

---

1. Connecting the Handheld LPC with a Computer .....	4
1.1 Handheld LPC Settings .....	4
1.2 Connecting with a Computer .....	6
1.3 Software Operating Requirements .....	6
2. Software Installation .....	7
3. Operation .....	9
3.1 Program Startup .....	9
3.2 Transferring Data from the Handheld LPC.....	10
3.3 Saving Data.....	11
3.4 Printing Data.....	13
3.5 Setting Time/Date of the Handheld LPC.....	14
3.6 A change of an Handheld LPC type .....	15
3.7 Closing the Software Program.....	15
4. Warranty and After Service .....	17
5. Contact Information .....	18

# 1. Connecting the Handheld LPC with a Computer

This software Operation Manual describes the method of transferring the data stored in the Handheld Laser Particle Counter (LPC) Model 3887 to a personal computer (hereinafter “computer”), and storing the data in a CSV format.

## 1.1 Handheld LPC Settings

### 1) UPLINK Mode Setting

To transfer the data stored in the Handheld LPC to a computer by using the software, the Handheld LPC must be set to the UPLINK Mode.

Display Screen	Key Operation	Description
<div style="border: 1px solid black; padding: 5px; text-align: center;">           &lt;MENU&gt;            1. MEASURE MODE            2. DATA PROCESSING            3. OPTIONS         </div> <div style="text-align: center; margin: 5px 0;">↓</div>	POWER	Turn on the power by pressing the <b>POWER</b> key.
	ENTER	Proceed to the <MENU> screen by pressing the <b>ENTER</b> key.
<div style="border: 1px solid black; padding: 5px; text-align: center;">           &lt; DATA PROCESSING &gt;            RECORDS 00139            1.DISPLAY 3.PRINT            2.UPLINK 4.CLEAR         </div> <div style="text-align: center; margin: 5px 0;">↓</div>	▲ ▼	Select “2. DATA PROCESSING”.
	ENTER	Proceed to the <DATA PROCESSING> screen by pressing the <b>ENTER</b> key.
<div style="border: 1px solid black; padding: 5px; text-align: center;">           DATA UPLINK 09:23             WAIT...         </div>	▲ ▼	Select “2. UPLINK”.
	ENTER	Read in data by using the software.

Fig. 1-1 Instrument Setting

## 2) Confirm the Handheld LPC Communication Address

Confirm the Handheld LPC communication address by the following procedures.

Display Screen	Key Operation	Description
<p style="text-align: center;">&lt;MENU&gt;</p> <p>1. MEASURE MODE 2. DATA PROCESSING 3. OPTIONS</p> <p style="text-align: center;">↓</p>	POWER	Turn on the power by pressing the <b>POWER</b> key.
	ENTER	Proceed to the <MENU> screen by pressing the <b>ENTER</b> key.
<p style="text-align: center;">&lt;OPTIONS&gt;</p> <p>1.ALARM 4.HOTKEY 2.UNIT 5.AUTOSTAR. 3.UTILITY</p> <p style="text-align: center;">↓</p>	▲▼	Select “3. OPTIONS”.
	ENTER	Proceed to the <OPTIONS> screen by pressing the <b>ENTER</b> key.
<p style="text-align: center;">&lt;SYSTEM&gt;</p> <p>1.DATE 2005/03/28 2.TIME 14:25 3. ID 05</p> <p style="text-align: center;">↓</p>	▲▼	Select “3. UTILITY”.
	ENTER	Confirm that the “3. ID” is set to “00”. If it is set to any other value, change the value to “00” by using the ▲▼ key.
<p style="text-align: center;">&lt;UTILITIES&gt;</p> <p>4.COMMUNICATION RS232C</p>		Confirm that the “4. Communication” is set to “RS232C”. If “RS485” is selected, change it to “RS232C” by using the ▲▼ key.  Press the <b>PREV</b> key to return to the <MENU> screen.

## 1.2 Connecting with a Computer

Connect the instrument with a 9 pin COM port of the Computer.

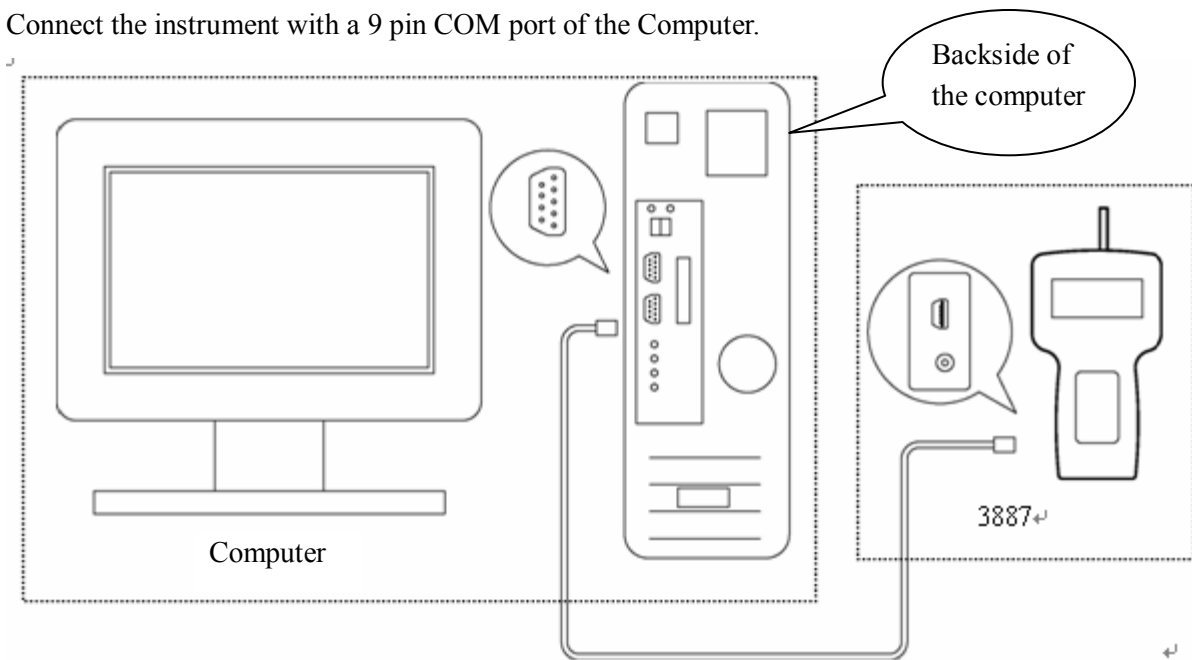


Fig. 1-2 Hardware Connection Diagram

## 1.3 Software Operating Requirements

Item	Condition	
OS	Microsoft Windows 2000 Professional Microsoft Windows XP Home Edition Microsoft Windows XP Professional	
Language	English or Japanese	
Communication Setting	Item	Condition
	COM port	COM1 to COM8

### Operating Requirements:


CPU	Pentium-4 300MHz or higher
Interface	COM port × 1
Operating System	Microsoft Windows 2000 Professional, Microsoft Windows XP Home Edition, or Microsoft Windows XP Professional
Memory Capacity	128MB or more
Required HDD Capacity	50MB or more
Display	Resolution of 800*600 or higher, 32 colors

### **[Caution]**

Please note that this software is provided exclusively for the Handheld LPC. It cannot be used for any other model.

## 2. Software Installation

1) Before installing the software, shut down (exit) all operating application programs.

Insert the installation CD into the CD-ROM drive, select the “Handheld LPC Data Retrieval Software” folder, and double click the installation icon  “Setup.exe”.

(Note: If an old version of this software is already installed in the computer, please make sure to uninstall the old version before installing the new version.)

2) After a few seconds, the installation will start automatically, and the window shown in . 2-1 will be displayed.

Click the “OK” button to proceed to the installation window shown in Fig. 2-2.

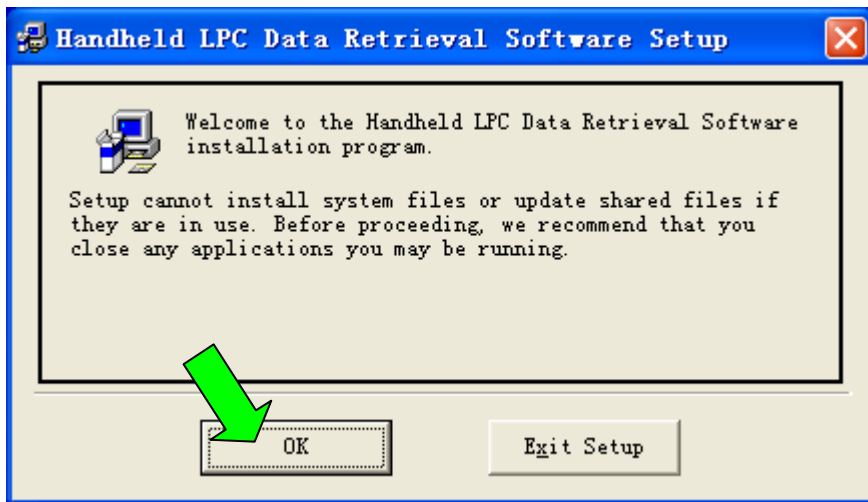


Fig. 2-1

3) The following window is to confirm the destination directory to save the software. To proceed with the default directory, click the installation starting icon.

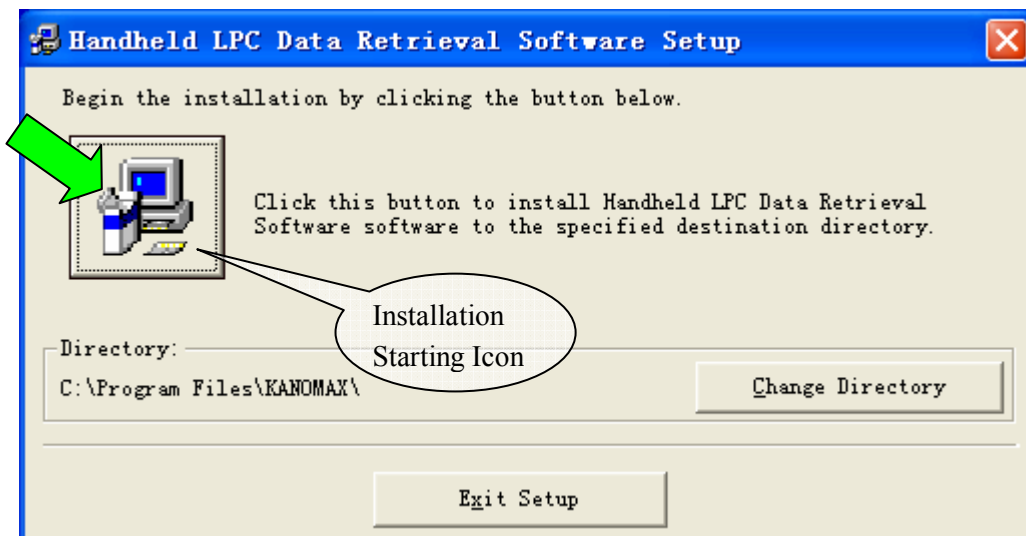


Fig. 2-2

4) Select the Program Group for installing the software. By default, a program group called “Kanomax” will be created. To proceed with the default setting, click the “Continue” button, and the installation will start.

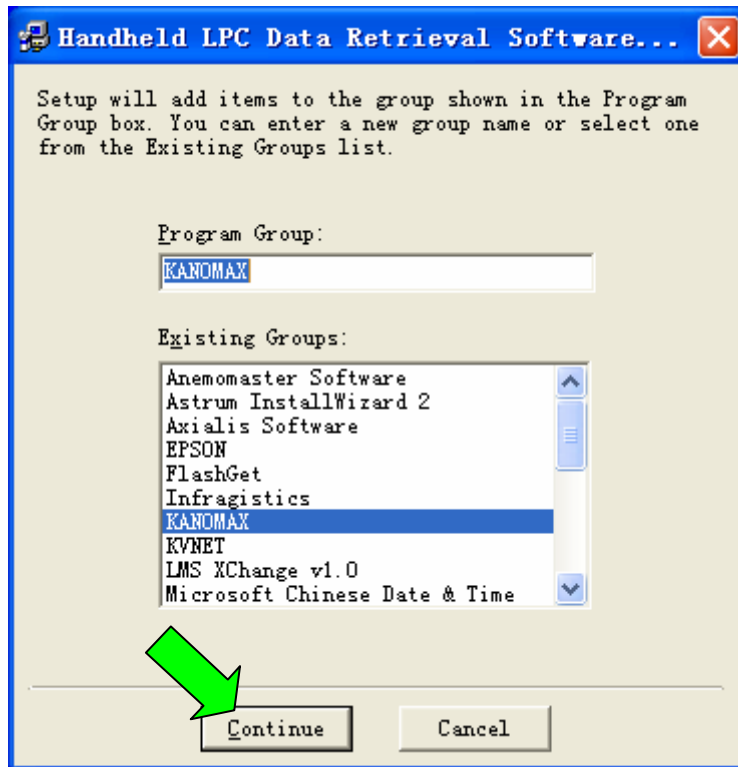


Fig. 2-3

5) The following window will be displayed while the installation is in progress.

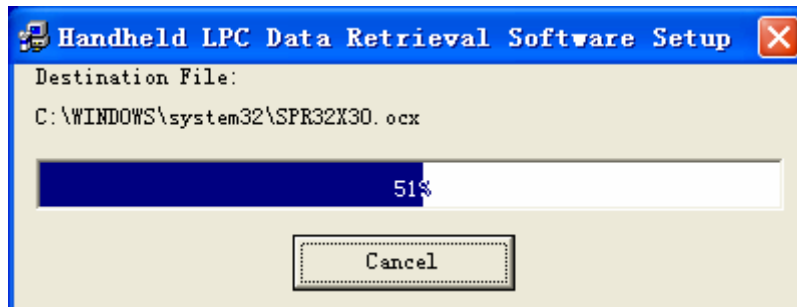


Fig. 2-4

6) When installation is completed properly, the following window will be displayed. Click the “OK” button to close the window.

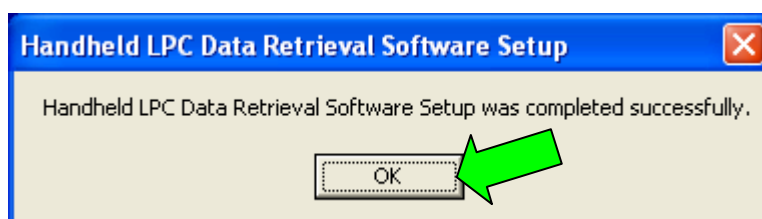


Fig. 2-5

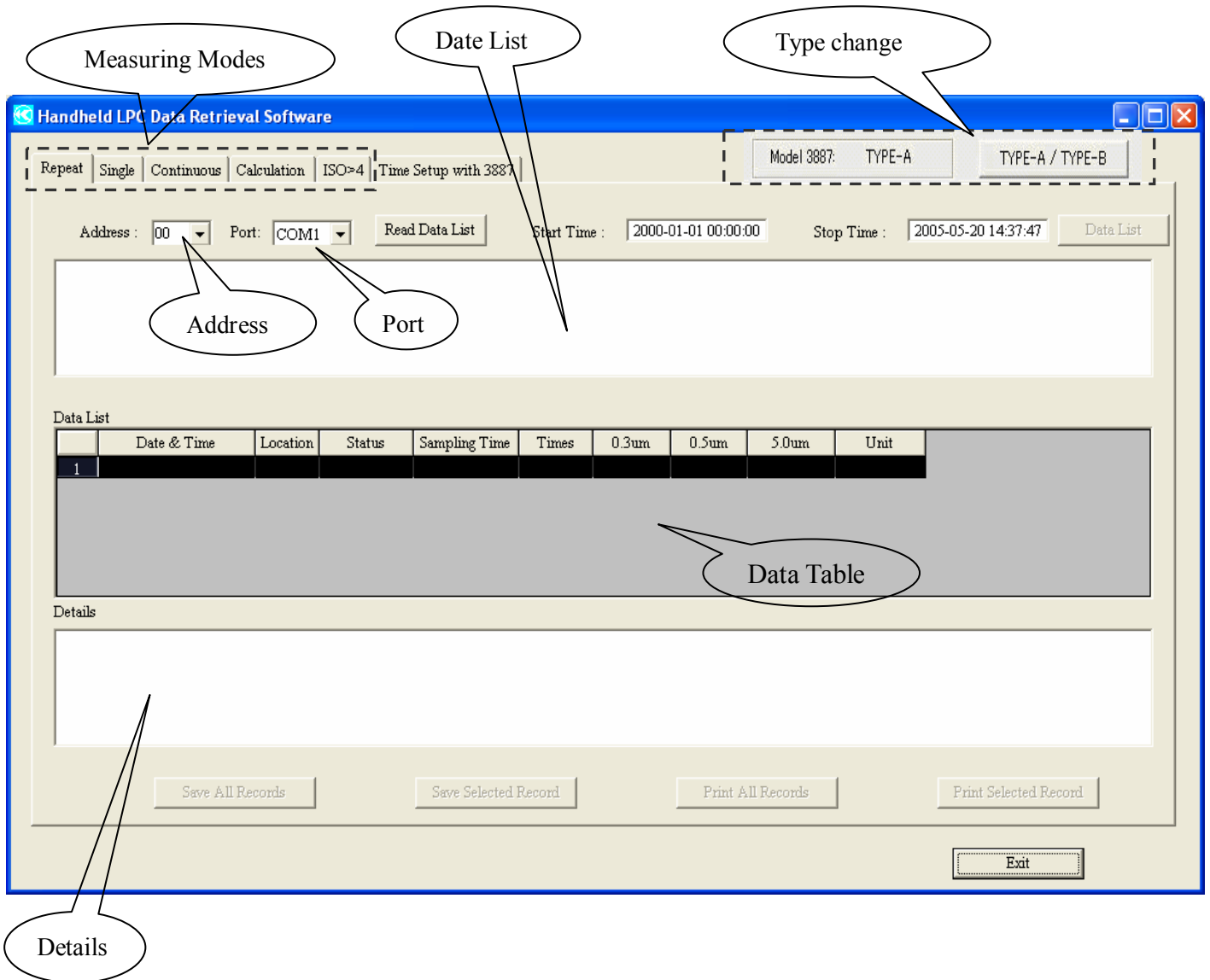


### 3. Operation

#### 3.1 Program Startup

To start the program, select: [Start] → [All Programs] → [KANOMAX] → [Handheld LPC Retrieval Software]. The program will start on clicking the [Handheld LPC Retrieval Software].

< Start-up Menu >



Item	Range
Instrument Address	00 to 99
COM Port	COM1 to COM8

### 3.2 Transferring Data from the Handheld LPC

Data stored in the Handheld LPC can be transferred to the computer by the following procedures.

1) Select the measurement mode of the data to be transferred.

Measurement Modes: REPEAT, SINGLE, CONTINUOUS, CALCULATION, ISO>4

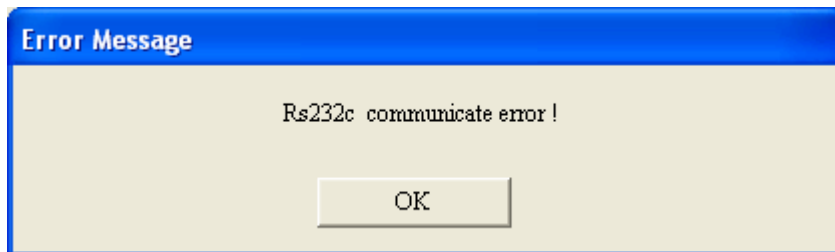
2) Set the instrument Address to match the ID number set for the Handheld LPC.

3) Set the computer Port number.

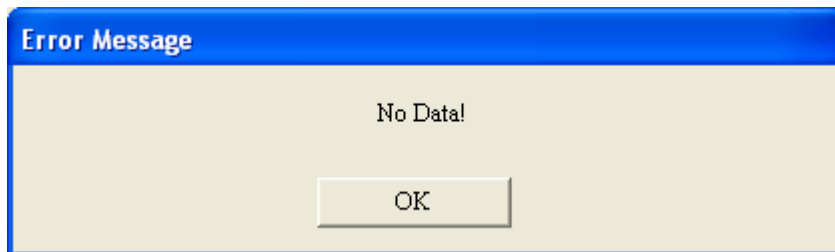
4) Click the  to read in and display the data stored in the Handheld LPC on the Data List section.

Error Messages:

When having a communication error, the following message will be displayed. (Confirm the instrument and cable connections.)



When there is no data stored in the Handheld LPC, the following message will be displayed.



5) Input the Start Time and Stop Time.

- Direct input, or

- Click the Sampling Time displayed in the Data List.

6) When the time range of the sampling data is set, click  button.

Read in data will be displayed on the Data Table section.

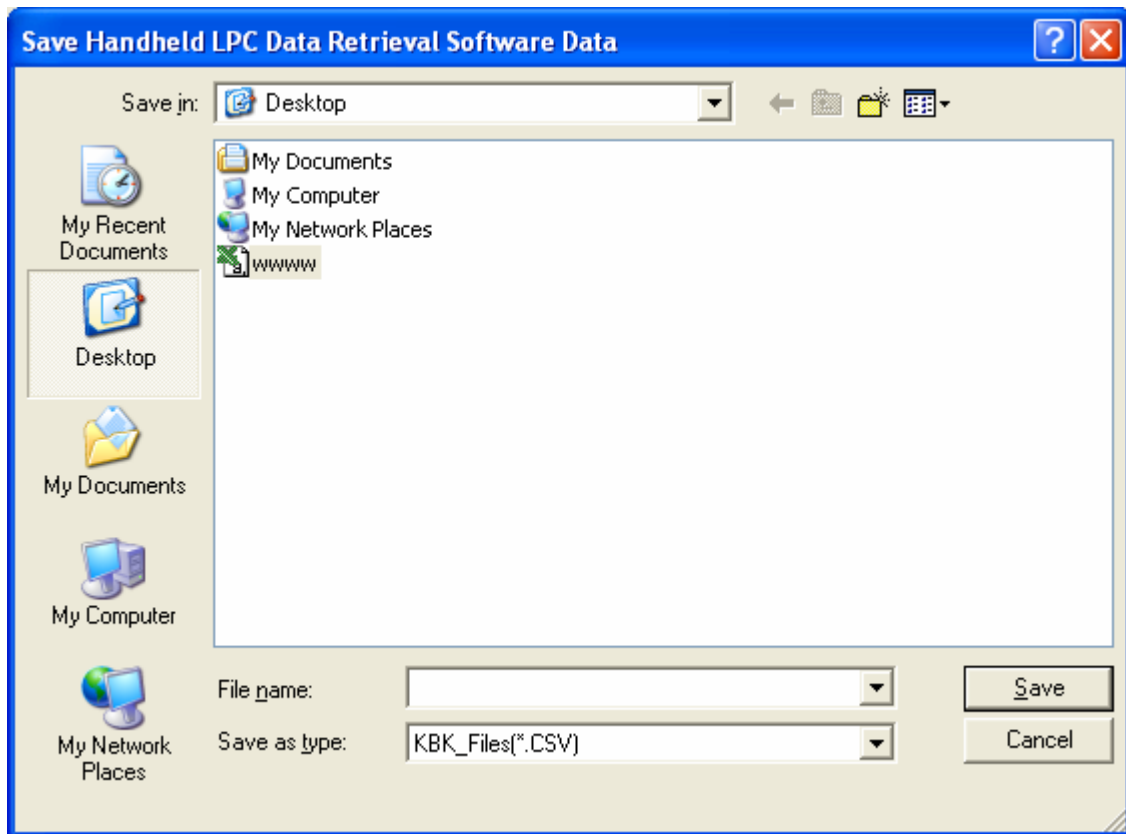
7) By clicking the data number on the Data Table, details of the relevant data will be displayed.

### 3.3 Saving Data

To save all data, click:

To save selected data, click the data number of the desired data, and click:

When either  or  is clicked, the following window will be displayed for saving the data.



**Note:** File type “CSV” must be selected.

- |                                       |   |
|---------------------------------------|---|
| <input type="button" value="Save"/>   | : To save the data file.                |
| <input type="button" value="Cancel"/> | : To exit without saving the data file. |

The following is an example of an Excel sheet, which is displayed when the saved data is opened.

The screenshot shows a Microsoft Excel window titled 'Microsoft Excel - www'. The spreadsheet contains data from a handheld LPC data retrieval software. The data is organized into a table with the following structure:

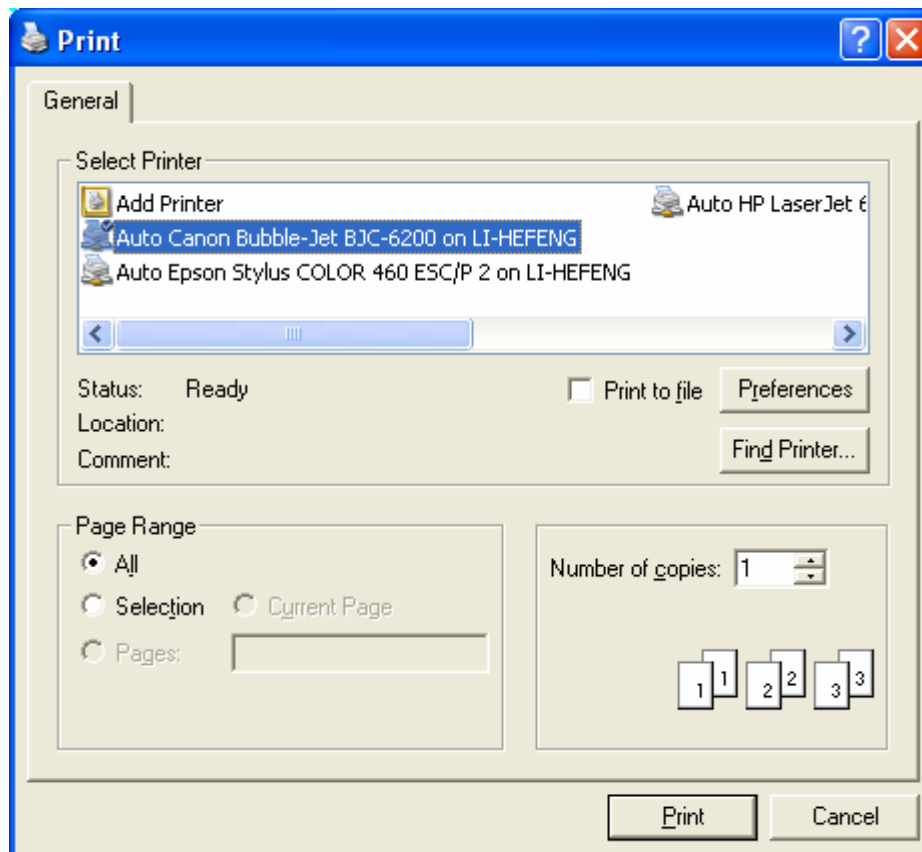
	A	B	C	D	E	F	G	H	I
1	Handheld LPC Data Retrieval Software								
2	Mode: Repeat								
3	Start Time:2005-05-19 10:05:44								
4	End Time:2005-05-19 11:04:10								
5									
6	Date & Time	Location	Status	Sampling Times		0.3um	0.5um	5.0um	Unit
7	5/19/2005 10:05	1	OK	5	0	1.52E+06	6.51E+05	7.20E+02	/cf
8	5/19/2005 10:05	1	OK	5	1	1.49E+06	6.27E+05	2.40E+02	/cf
9	5/19/2005 10:06	1	OK	5	0	1.49E+06	6.12E+05	1.20E+03	/cf
10	5/19/2005 10:06	1	OK	5	1	1.51E+06	6.30E+05	1.44E+03	/cf
11	5/19/2005 10:06	1	OK	5	0	1.50E+06	6.28E+05	7.20E+02	/cf
12	5/19/2005 10:06	1	OK	5	1	1.51E+06	6.27E+05	3.60E+02	/cf
13	5/19/2005 10:07	1	OK	5	0	1.49E+06	6.25E+05	7.20E+02	/cf
14	5/19/2005 10:07	1	OK	5	1	1.50E+06	6.17E+05	1.08E+03	/cf
15	5/19/2005 10:57	1	OK	5	0	1.51E+06	7.18E+05	7.20E+02	/cf
16	5/19/2005 10:58	1	OK	5	1	1.50E+06	7.08E+05	9.60E+02	/cf
17	5/19/2005 10:58	1	OK	5	0	1.51E+06	7.05E+05	6.00E+02	/cf
18	5/19/2005 10:58	1	OK	5	1	1.49E+06	7.09E+05	1.20E+03	/cf
19	5/19/2005 10:58	1	OK	5	0	1.52E+06	7.12E+05	6.00E+02	/cf
20	5/19/2005 10:58	1	OK	5	1	1.52E+06	7.06E+05	3.60E+02	/cf
21	5/19/2005 10:59	1	OK	5	0	1.47E+06	7.03E+05	1.08E+03	/cf
22	5/19/2005 10:59	1	OK	5	1	1.49E+06	6.98E+05	8.40E+02	/cf
23	5/19/2005 10:59	1	OK	5	0	1.50E+06	7.10E+05	7.20E+02	/cf
24	5/19/2005 10:59	1	OK	5	1	1.46E+06	6.92E+05	8.40E+02	/cf
25	5/19/2005 11:03	1	OK	5	0	1.51E+06	7.05E+05	1.32E+03	/cf
26	5/19/2005 11:03	1	OK	5	1	1.49E+06	6.87E+05	1.44E+03	/cf
27	5/19/2005 11:03	1	OK	5	0	1.48E+06	6.84E+05	1.32E+03	/cf
28	5/19/2005 11:03	1	OK	5	1	1.49E+06	6.75E+05	1.68E+03	/cf
29	5/19/2005 11:04	1	OK	5	0	1.48E+06	6.89E+05	1.08E+03	/cf

### 3.4 Printing Data

To print all data, click: **Print All Record**

To print selected data, click the data number of the desired data, and click: **Print Selected Record**

When either **Print All Record** or **Print Selected Record** is clicked, the following window will be displayed for printing the data.

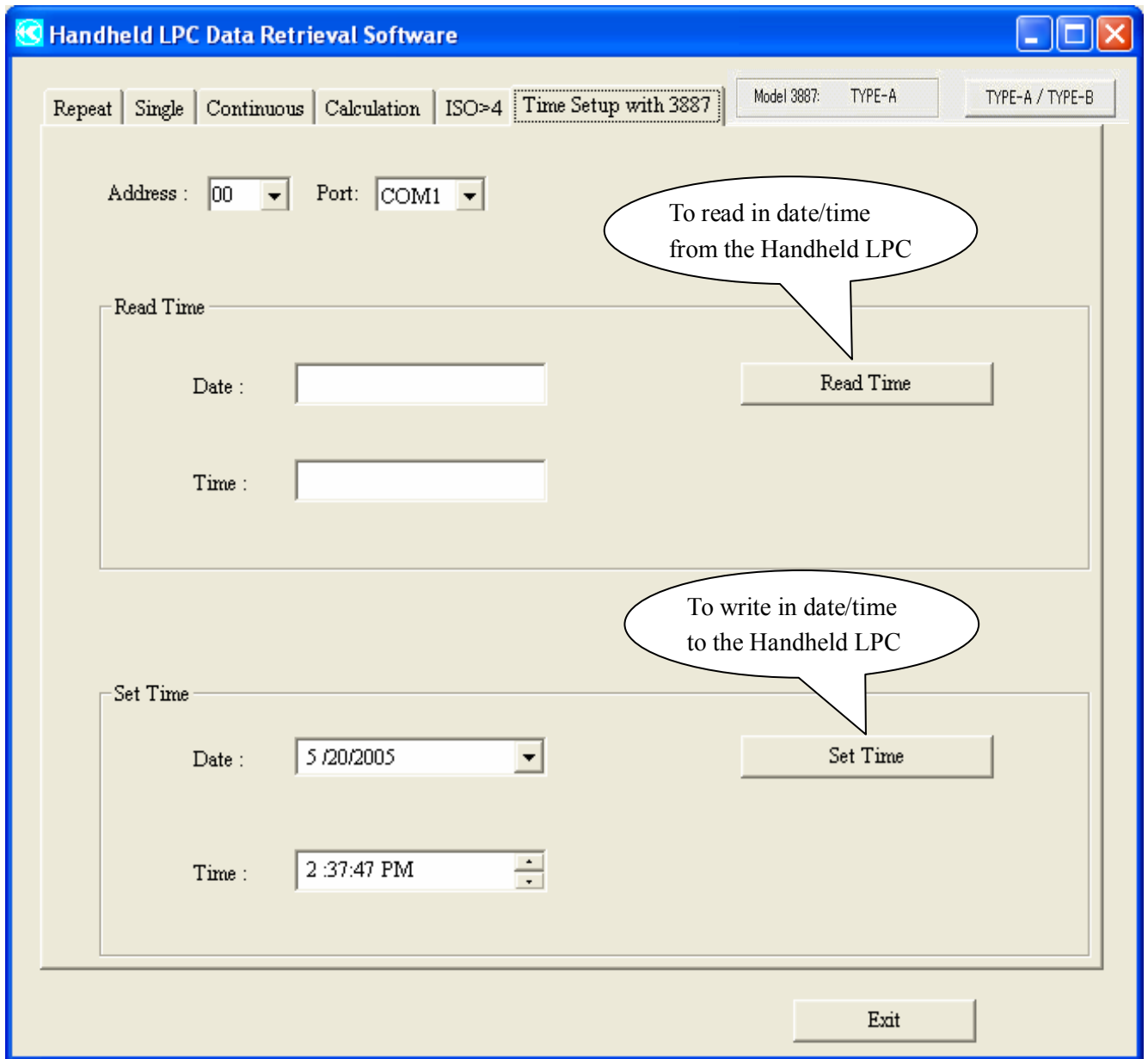


**Print** : To print a data file.

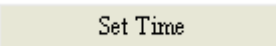
**Cancel** : To exit without printing a data file.

### 3.5 Setting Time/Date of the Handheld LPC

Click the “Time Setup with 3887” tab to display the following dialog box.



To read in the date/time of the Handheld LPC, click: 

To set the date/time of the Handheld LPC, input the data/time, and click: 

### 3.6 A change of an Handheld LPC type



It is written on the back of the main body of Handheld LPC whether it is "A-Type" or "B-TYPE".

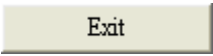
As for the initial setting of this software, it is typed "A".

I set it with this change button, and, in the case of "B" type use, please use it.



To set the Type of the Handheld LPC, select the Type, and click:[OK]

### 3.7 Closing the Software Program

Click the  button to close the software program.



## 4. Warranty and After Service

---

### Warranty

- A warranty card is not included in this product.
- The instrument (excluding consumables such as batteries) is warranted against defects in materials and workmanship under normal use for a period of one year from the date of original purchase.

### After Service

- When you have a problem with your unit, please check out the “Troubleshooting” section first.
- If that does not help, please contact your local distributor, or call our service center (See last page for contact information).
- During the warranty period, we will repair at no charge a product that proves to be defective due to material or workmanship under normal use. The limited warranty covers all defects encountered in normal use of the product, and does not apply in cases such as; loss or damage to the product due to abuse, mishandling, or alternation by the customer, or natural disaster. All return shipping charges are the responsibility of the customer.
- Repair after warranty expiration:  
Upon request, we will repair the instrument at the customer’s expense, if the instrument’s performance is found to be recoverable by providing the repair.
- Replacement parts are available for a minimum period of five (5) years after termination of production. This storage period of replacement parts is considered as the period during which we can provide repair service. For further information, please contact our service center.

When making an inquiry, please provide the following information.

- \* Product Name: Handheld Laser Particle Counter
- \* Model Number: 3887
- \* Serial Number: xxxxxx
- \* Date of Purchase: Day, Month and Year
- \* Description of Symptom in Detail:

## 5. Contact Information

---



### U.S.A.

#### **KANOMAX USA, INC.**

PO Box 372, 219 Route 206, Andover, NJ 07821 U.S.A.

**TEL:** (800)-247-8887 / (973)-786-6386 **FAX:** (973)-786-7586

**URL:** <http://www.kanomax-usa.com/>

**E-Mail:** [info@kanomax-usa.com](mailto:info@kanomax-usa.com)

### JAPAN

#### **KANOMAX JAPAN, INC.**

2-1 Shimizu Suita City, Osaka 565-0805, Japan

**TEL:** 81-6-6877-0183 **FAX:** 81-6-6879-2080

**URL:** <http://www.kanomax.co.jp/>

**E-Mail:** [sales@kanomax.co.jp](mailto:sales@kanomax.co.jp)

### CHINA

#### **Shenyang Kano Scientific Instrument Co., Ltd**

No. 12, 4 Jia Wencui Road Heping District

Shenyang City PRC

**TEL:** 86-24-23845309 **FAX:** 86-24-23898417

**URL:** <http://www.kanomax.com.cn/>

**E-mail:** [sales@kanomax.com.cn](mailto:sales@kanomax.com.cn)