

6000 PSI Flow Meters

For A.P.I. Oil / Caustic and Corrosive Liquids

- Direct reading
- Install in any position
- 360° rotatable guard/scale
- Easier-to-read linear scale
- No flow straighteners or special piping required
- Relatively insensitive to shock and vibration
- Good viscosity stability
- Temperature up to 240 °F
- Accuracy $\pm 2\%$ full scale
- Repeatability $\pm 1\%$
- Special scales available

SPECIFICATIONS:

MATERIALS:

T316 Stainless body, piston and cone

COMMON PARTS:	Retaining Ring: T316 SS
Spider Plate: T316 SS	Retaining Spring: T316 SS
Spring: T316 SS	Indicator and Internal Magnet: PPS / Ceramic
Fasteners: T316 SS	Guard Seal / Bumper: Buna N
Pressure Seals: Viton®	Scale Support: 6063 - T6 Aluminum
Guard: Polycarbonate	End Caps: Nylon ST

THREADS: NPTF ANSI B2.2, BSPP ISO1179

TEMPERATURE RANGE: -20 to +240 °F (-29 to +116 °C) for higher temperatures consult factory

PRESSURE RATING:

Oil / Liquids Operating: 6,000 psi/414 bar max. (5,000 psi/345 bar max. for 3/4" to 1-1/2" Series) with a 3:1 safety factor.

For High Cycle Applications: See page 7

PRESSURE DROP: See Ordering Information Table, page 32.

For detailed differential pressure charts, see page 59 for API Oil, and page 58 for Liquids.

ACCURACY: $\pm 2\%$ of full scale

REPEATABILITY: $\pm 1\%$

HOSTILE ENVIRONMENT OPTION SPECIFICATIONS:

MATERIALS:

T316 Stainless body, piston and cone

COMMON PARTS:	Retaining Ring: T316 SS
Spider Plate: T316 SS	Retaining Spring: T316 SS
Spring: T316 SS	Indicator: T416 SS
Fasteners: T316 SS	Bumper: T316 SS
Seals: Viton®	Scale Support: T316 SS
End Caps: T316 SS	Guard: Cylindrical Pyrex® glass
Internal Magnet: Teflon® Coated Alnico 8	

TEMPERATURE RANGE: -20 to +400 °F (-29 to +205 °C) Continuous

+400 to +500 °F (+205 to +260 °C) Intermittent

For detailed "Pressure vs. Temperature" correlation information, see page 32.

NOTE: See page 29 for dimensions and similar photo illustration.



DIMENSIONS:

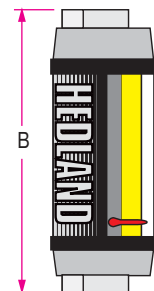
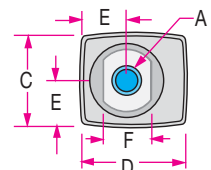
A	B	C	D	E	F
NOMINAL PORT SIZE	LENGTH in (mm)	WIDTH in (mm)	DEPTH in (mm)	OFFSET in (mm)	FLATS in (mm)
1/4	4.8 (122)	1.68 (43)	1.90 (48)	.84 (21)	.88 (22)
1/2	6.6 (168)	2.07 (53)	2.40 (61)	1.04 (26)	1.25 (32)
3/4	7.2 (183)	2.48 (63)	2.85 (72)	1.24 (32)	1.50 (38)
1	7.2 (183)	2.48 (63)	2.85 (72)	1.24 (32)	1.75 (44)
1-1/4	12.2 (310)	4.12 (105)	4.72 (120)	2.06 (52)	2.75 (70)
1-1/2	12.2 (310)	4.12 (105)	4.72 (120)	2.06 (52)	2.75 (70)

NOTE: Weights for all sizes can be found on page 73.

Pyrex is a registered trademark of Corning, Inc.

Teflon is a registered trademark of E.I. DuPont de Nemours & Co.

Viton is a registered trademark of DuPont Dow Elastomers



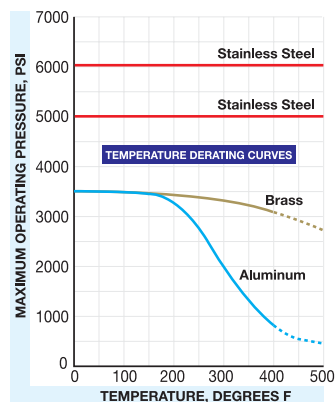
6000 PSI Flow Meters

For A.P.I. Oil / Caustic and Corrosive Liquids

ORDERING INFORMATION:

NOMINAL PORT SIZE	FLOW RANGE		PRESSURE DROP		MODEL NUMBER <i>(see example below)</i>				HOSTILE ENVIRONMENT OPTION
	GPM	LPM	50% FLOW PSI (BAR)	100% FLOW PSI (BAR)	API - OIL .876 (S.G.)		LIQUIDS 1.0 (S.G.)		
					NPTF	BSPP	NPTF	BSPP	
1/4"	0.1 - 1.0	0.5 - 3.75	4.0 (.28)	9.0 (.62)	6000 PSI		6000 PSI		HE
	0.2 - 2.0	1 - 7.5	6.0 (.41)	13.0 (.90)	H231X - 010 - †	H232X - 010 - †	H234X - 010 - †	H235X - 010 - †	
1/2"	0.2 - 2.0	1 - 7.5	2.0 (.14)	3.0 (.21)	6000 PSI		6000 PSI		HE
	0.5 - 5.0	2 - 19	3.0 (.21)	6.0 (.41)	H631X - 002 - †	H632X - 002 - †	H634X - 002 - †	H635X - 002 - †	
3/4"	0.2 - 2.0	1 - 7.5	1.0 (.07)	2.0 (.14)	5000 PSI		5000 PSI		HE
	0.5 - 5.0	2 - 19	2.5 (.17)	3.5 (.24)	H731X - 002 - †	H732X - 002 - †	H734X - 002 - †	H735X - 002 - †	
1"	0.2 - 2.0	1 - 7.5	1.0 (.07)	2.0 (.14)	5000 PSI		5000 PSI		HE
	0.5 - 5.0	2 - 19	2.5 (.17)	3.5 (.24)	H741X - 002 - †	H742X - 002 - †	H744X - 002 - †	H745X - 002 - †	
1-1/4"	3 - 30	10 - 110	3.0 (.21)	4.0 (.28)	5000 PSI		5000 PSI		HE
	5 - 50	20 - 190	3.5 (.24)	7.0 (.48)	H831X - 030 - †	H832X - 030 - †	H834X - 030 - †	H835X - 030 - †	
1-1/2"	3 - 30	10 - 110	3.0 (.21)	4.0 (.28)	5000 PSI		5000 PSI		HE
	5 - 50	20 - 190	3.5 (.24)	7.0 (.48)	H841X - 030 - †	H842X - 030 - †	H844X - 030 - †	H845X - 030 - †	

NOTE: Consult factory for availability.



(example) H731X - 030 - HE

PETROLEUM FLUIDS
PAGE 9



WATER AND OTHER LIQUIDS
PAGE 27



FLOW-ALERT FLOW SWITCHES
PAGES 39 and 41



FLOW TRANSMITTERS
PAGE 43

