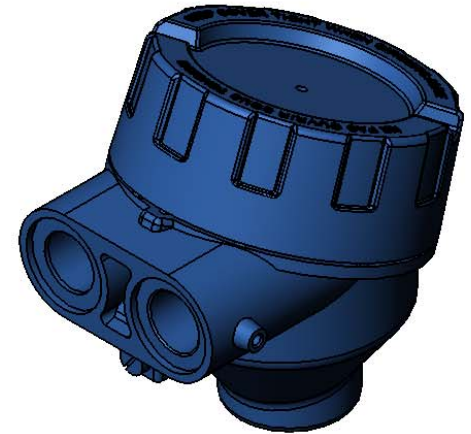
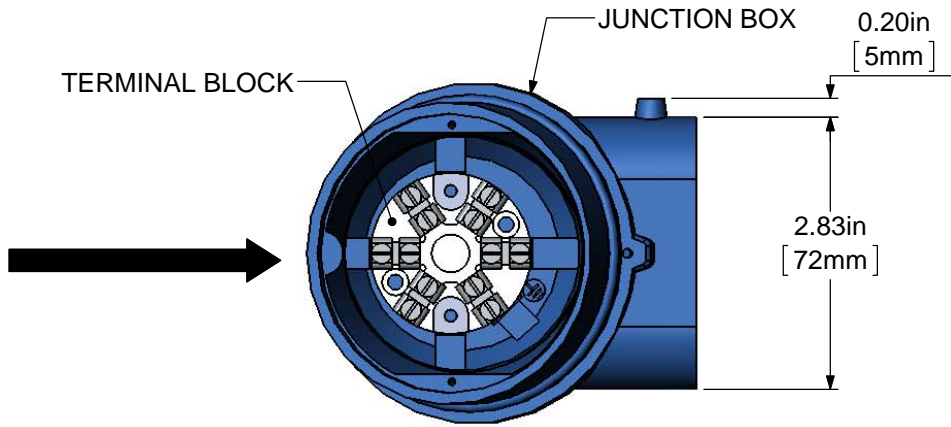
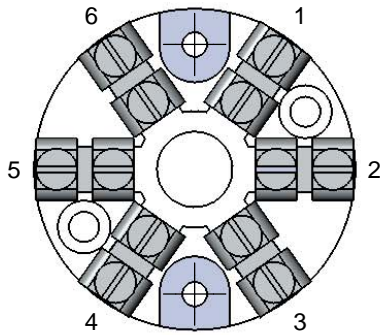
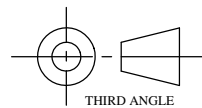
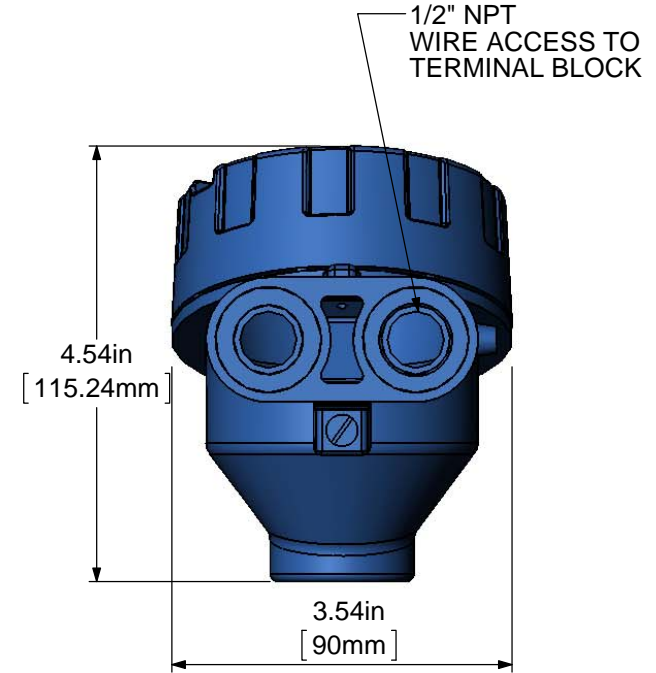
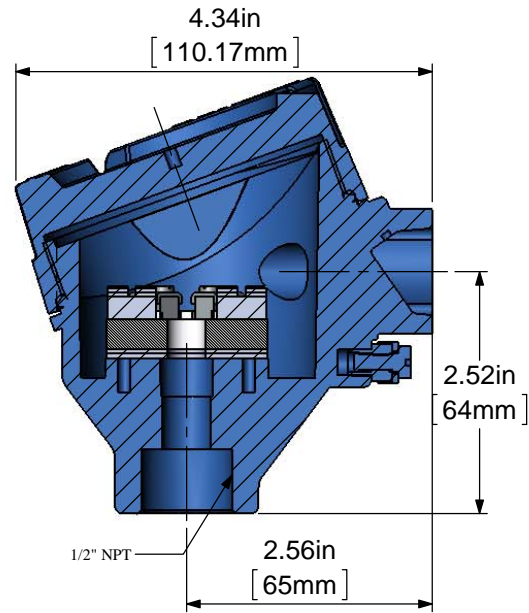



# HUB-40-Ex ASSEMBLY

## 6 POSITION TERMINAL BLOCK

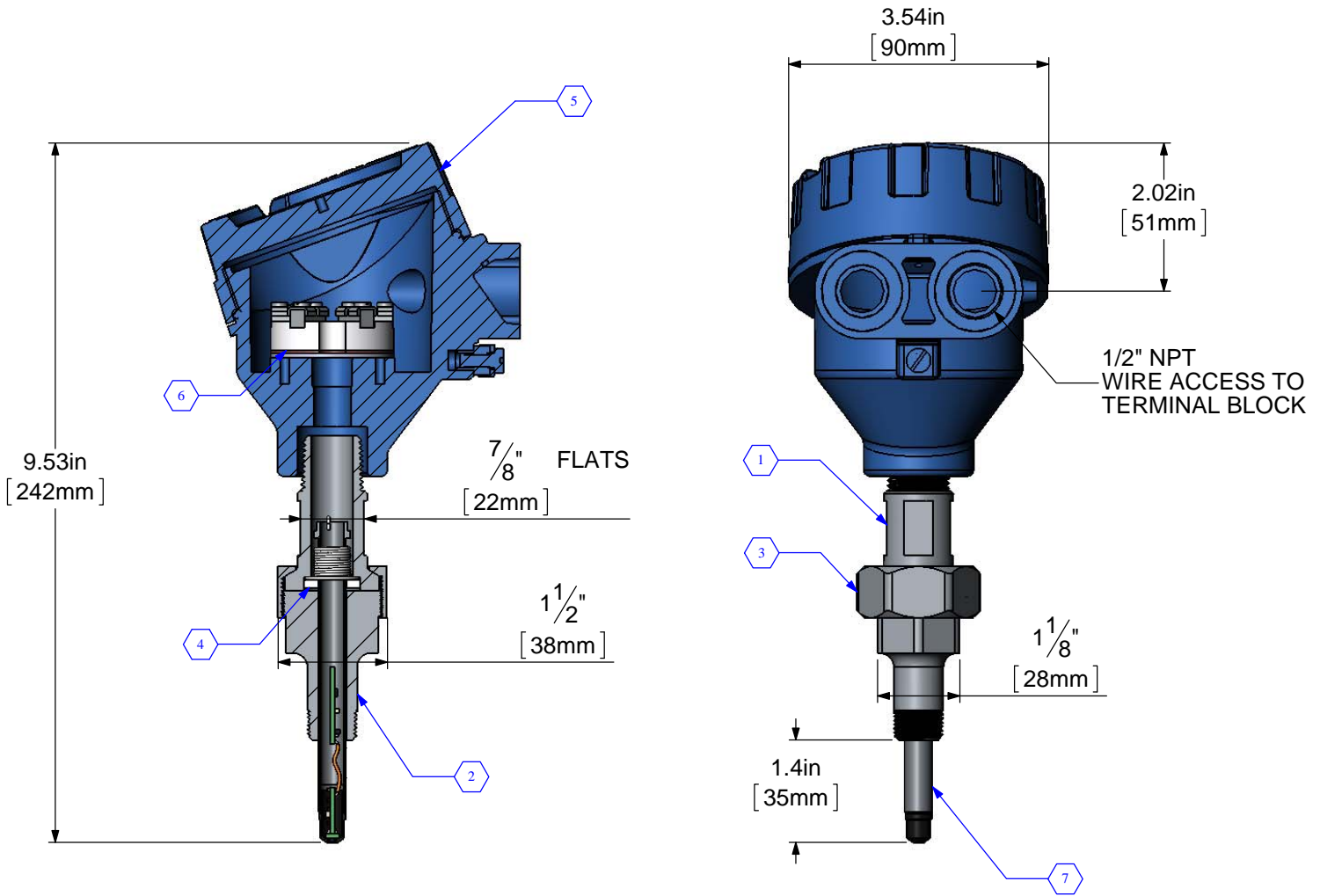


- TERMINAL 1: NO CONNECTION
- TERMINAL 2: GROUND
- TERMINAL 3: SUPPLY -
- TERMINAL 4: SIGNAL (FREQ. PULSE)
- TERMINAL 5: SUPPLY +
- TERMINAL 6: NO CONNECTION



AW-LAKE COMPANY USE ONLY PURCHASED PART  THIS PRINT, INCLUDING THE INFORMATION CONTAINED IN IT IS THE PROPERTY OF AW-LAKE COMPANY. IT IS CONSIDERED PROPRIETARY IN NATURE AND MAY NOT BE USED OR DISCLOSED OUTSIDE OF AW-LAKE COMPANY, EXCEPT UNDER PRIOR WRITTEN AGREEMENT. ANY MODIFICATIONS MADE TO OR COMMENTS WRITTEN ON THIS DRAWING BY UNAUTHORIZED PERSONNEL WILL VOID THIS DRAWING. ALL DIMENSIONS SHOWN ARE SUBJECT TO CHANGE WITHOUT NOTICE.		TOLERANCES UNLESS NOTED ENGLISH		PROJECT NAME: HUB-40-Ex		 <b>AW-LAKE COMPANY</b> A TABI GROUP COMPANY
				PART DESCRIPTION: HUB-40-Ex with Junction Box and Terminal Block		
REVISIONS		MATERIAL: N/A		FINISH: N/A		DRAWING NUMBER: HUB-40 Assembly    REV: A
REV.    DESCRIPTION    DATE    APPROVED		HARDENING: N/A		DRAWING NUMBER: HUB-40 Assembly    REV: A		
		DRAWING NUMBER: HUB-40 Assembly    REV: A		PART NUMBER: AW HUB-40EX		SCALE: 1:2
		DRAWING NUMBER: HUB-40 Assembly    REV: A		DRAWN BY: R. SHOOK		
		DRAWING NUMBER: HUB-40 Assembly    REV: A		PAGE: 1 OF 2		

# HUB-40-Ex ASSEMBLY



BOM Table			
ITEM NO.	AW-LAKE PART #	DESCRIPTION	QTY.
1	ENC-SS001S	SWIVEL UNION TOP	1
2	ENC-SS002S	SWIVEL UNION BOTTOM	1
3	ENC-SS003S	SWIVEL UNION COLLAR	1
4	FAS-WU001	RETAINING RING	1
5	ENC-AL001X	EX JUNCTION BOX ENCLOSURE	1
6	CON-TB002	6 POSITION TERMINAL BLOCK	1
7	HALL-EX3.75-ASM	HALL PICKUP ASSEMBLY	1

<p style="text-align: center;">AW-LAKE COMPANY USE ONLY PURCHASED PART</p> <p style="font-size: small;">THIS PRINT, INCLUDING THE INFORMATION CONTAINED IN IT IS THE PROPERTY OF AW-LAKE COMPANY. IT IS CONSIDERED PROPRIETARY IN NATURE AND MAY NOT BE USED OR DISCLOSED OUTSIDE OF AW-LAKE COMPANY, EXCEPT UNDER PRIOR WRITTEN AGREEMENT. ANY MODIFICATIONS MADE TO OR COMMENTS WRITTEN ON THIS DRAWING BY UNAUTHORIZED PERSONNEL WILL VOID THIS DRAWING. ALL DIMENSIONS SHOWN ARE SUBJECT TO CHANGE WITHOUT NOTICE.</p>	<p style="font-size: small;">TOLERANCES UNLESS NOTED ENGLISH</p>	<p><b>PROJECT NAME:</b> HUB-40-Ex</p> <p><b>PART DESCRIPTION:</b> HUB-40-Ex with Junction Box and Terminal Block</p> <p><b>MATERIAL:</b> N/A</p> <p><b>FINISH:</b> N/A</p> <p><b>HARDENING:</b> N/A</p> <p><b>DRAWING NUMBER:</b> HUB-40 Assembly    <b>REV:</b> A</p> <p><b>PART NUMBER:</b> AW HUB-40EX    <b>DATE:</b> 10/24/11</p> <p><b>DRAWN BY:</b> R. SHOOK</p> <p><b>PAGE:</b> 2 OF 2    <b>SCALE:</b> 1:2</p>	<p style="font-weight: bold; font-size: small;">AW-LAKE COMPANY</p> <p style="font-size: x-small;">A TASI GROUP COMPANY</p> <p style="font-size: x-small;">8809 INDUSTRIAL DR. FRANKSVILLE, WI 53126 TEL. # (262) 884-9800 FAX. # (262) 884-9810</p>
--	--	---	--