

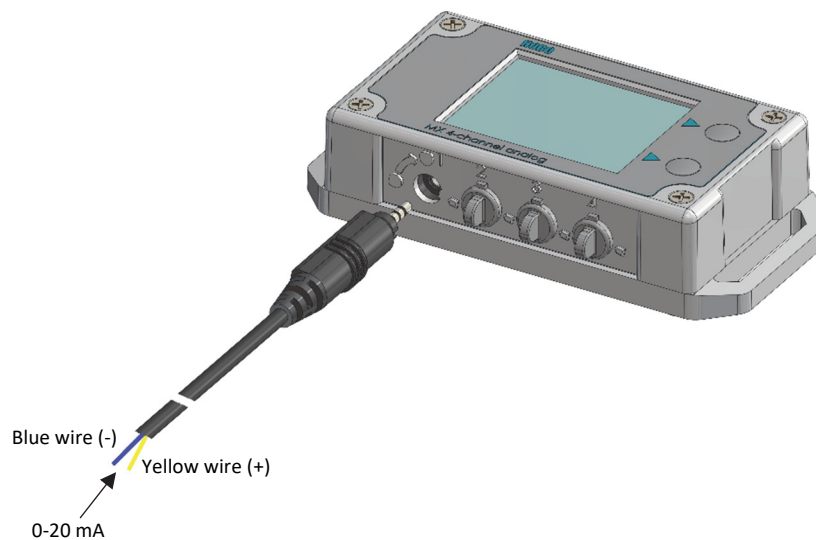
Self-Describing 4-20 mA Input Sensor (SD-MA-420) Manual

For use with HOBO® MX1104 and MX1105 data loggers

Specifications

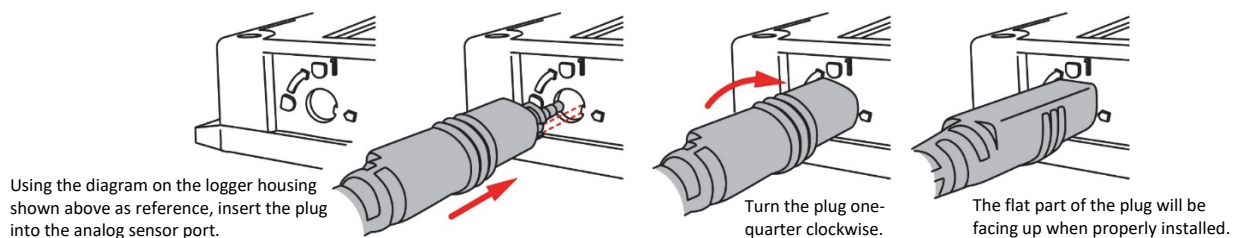
Measurement Range	0 to 20.1 mA
Accuracy	±0.001 mA ±0.2.% of absolute current
Resolution	0.002% of full scale
Cable Length	47 cm (18.5 inches)

This cable measures currents from 0 to 20.1 mA and must be connected so that the current flows through, and with the proper polarity, as shown below. Do not expose to current above 20 mA or negative current. Do not cut off the end of the black cable where it connects to the blue and yellow wires as that contains the precision resistor required for current measurements.



Using the Sensor with the HOBO MX Analog/Temp/RH/Light (MX1104) or HOBO MX 4-Channel Analog (MX1105) Data Logger

1. Insert the plug into an analog sensor port on the logger. Turn the sensor plug one-quarter clockwise until it stops.



2. In HOBOMobile, connect to the logger and tap Configure. The sensor type will be selected automatically. Set any other logger settings and tap Start. See the HOBOMobile User's Guide at <https://www.onsetcomp.com/manuals/17841-hobomobile-users-guide> for details on configuring the logger.