

DIGITAL TIMER INSTRUCTIONS (T5)

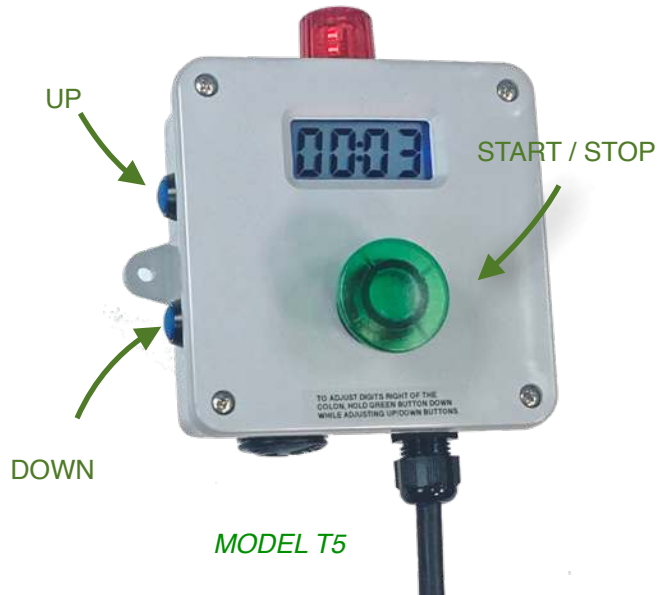
1. CONNECT POWER

2. SETTING THE TIME

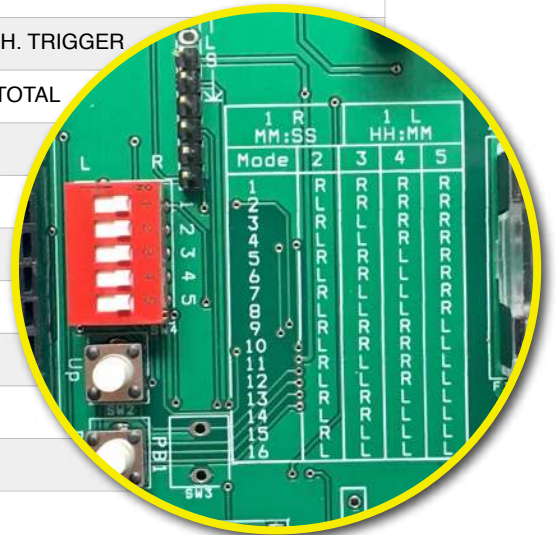
- The blue buttons on the side adjust the time up and down left of the colon.
- To program the digits right-of the colon, (usually seconds) hold down the green “stop/start” button then adjust the blue buttons.

3. SELECTING PROGRAM

- Switch #1 selects minutes /seconds in every case. For minutes/seconds the switch will be to the RIGHT.
- Switches 2,3,4,5, select other behaviors according to this table below. See detailed “mode chart” on our website for further detail on the behaviors.



MODE	SWITCH POSITION					DESCRIPTION
	1	2	3	4	5	
1	L / R	R	R	R	R	EARLY WARNING ON LED1 (DEFAULT)
2	L / R	L	R	R	R	MANUAL STOP - CANNOT CANCEL CYCLE
3	L / R	R	L	R	R	MECHANICAL TRIGGER WITH EARLY WARNING
4	L / R	L	L	R	R	PAUSING (ACCUMULATES TIME AFTER STOPPING)
5	L / R	R	R	L	R	AUTOMATIC CYCLE STOP (WITH CANCEL)
6	L / R	L	R	L	R	EARLY WARNING ON LED2
7	L / R	R	L	L	R	GUARD DUTY
8	L / R	L	L	L	R	SRAY RINSE - MECH. TRIGGER
9	L / R	R	R	R	L	MACHINE HOURS TOTAL
10	L / R	L	R	R	L	ON-DELAY
11	L / R	R	L	R	L	REPEAT
12	L / R	L	L	R	L	FUTURE USE
13	L / R	R	R	L	L	FUTURE USE
14	L / R	L	R	L	L	FUTURE USE
15	L / R	R	L	L	L	FUTURE USE
16	L / R	L	L	L	L	FUTURE USE



FIRMWARE V. 51_510_01X

SWITCHES FOR SELECTING MODES

DIGITAL TIMER INSTRUCTIONS (T5)

4. EARLY WARNING FEATURE

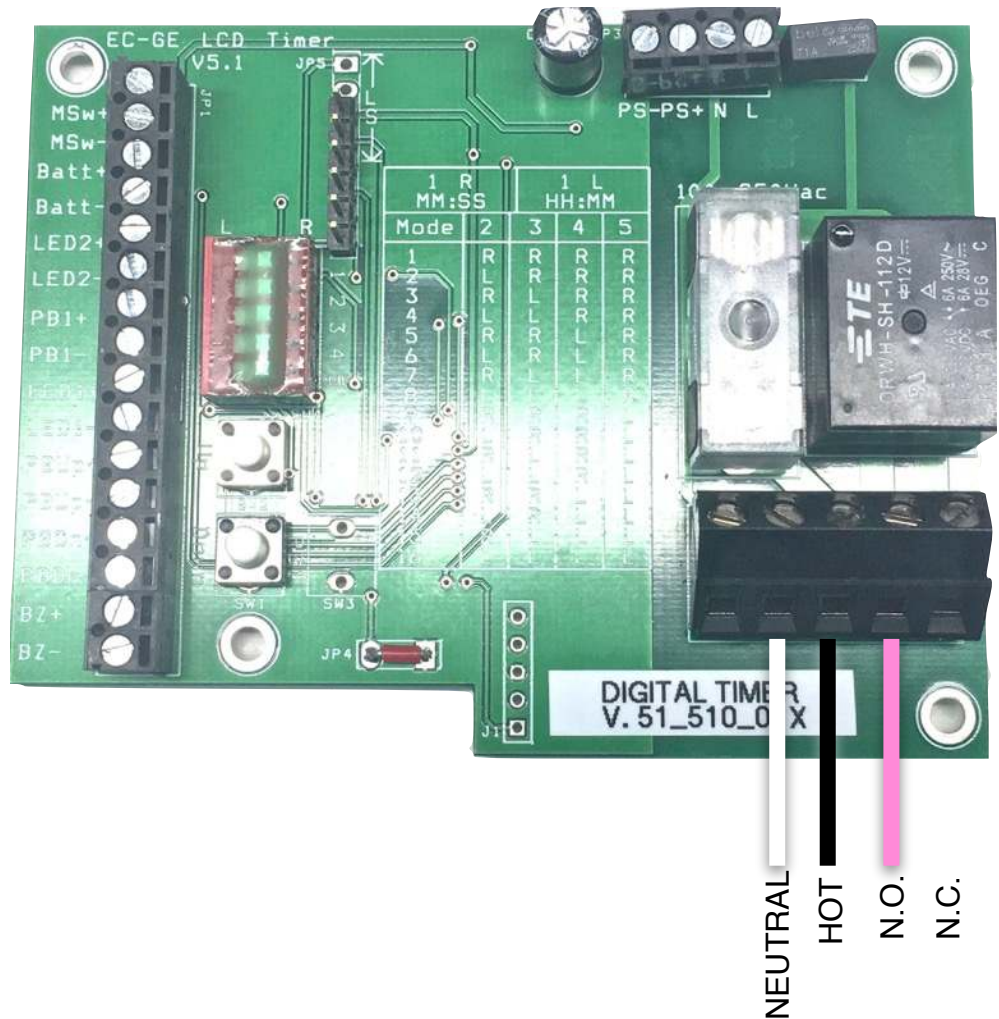
- Modes 1,3,8 have an “early warning” whereby one of the LEDs illuminates before the end of the countdown. To activate this feature, press all 3 buttons simultaneously and wait for the time to flash. (should take 5 seconds)
- When flashing, program the desired early warning time. (if setting seconds then you will hold down the front button and the UP button simultaneously)
- When you have the desired “early warning” time, let the buttons go and wait for 3 seconds. The display will flash to let you know you have exited the “early warning” setting mode.
- Time is now ready to set the cycle time, or run a cycle.

5. REPEAT CYCLE

- Mode 11 you set the interval time by holding all 3 buttons simultaneously.

6. OTHER NOTES

- Settings will be kept in memory when power turned off.
- Pressing both blue buttons resets display to zero time.
- Holding down blue buttons for a few seconds advances the time quickly.
- Relay output is set to N.O. Can be changed to N.C. by landing the “HOT” wire on the N.C. terminal. (see diagram)



Dec 11, 2018