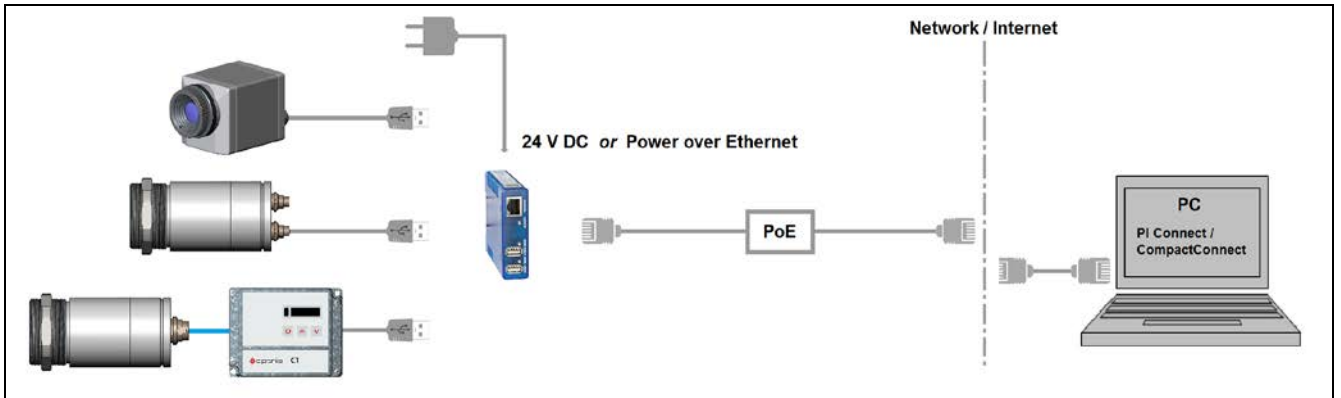


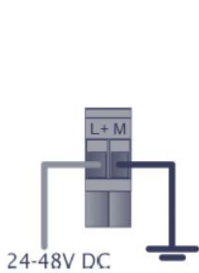
USB Server Gigabit – Quick Start Guide

1. Connection USB Server Gigabit [ACPIUSBSGB] via Network

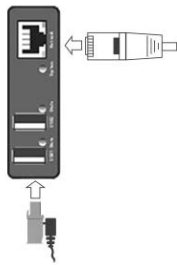
Installation



Power supply



24V power supply



or



Power over Ethernet [part#: ACPIPOE]

System-LED (green/ orange)

- GREEN ON** Power supply and system OK
- GREEN flashing** System start
- ORANGE flashing** Current firmware update or reset to factory settings
- ORANGE ON** Reset to factory settings finished; Restart required

State-LEDs (green/ red)

- GREEN ON** USB port in use
- RED ON** The USB Server has been disconnected the power supply of the port e.g. due to overload or temporary disconnecting of the USB device

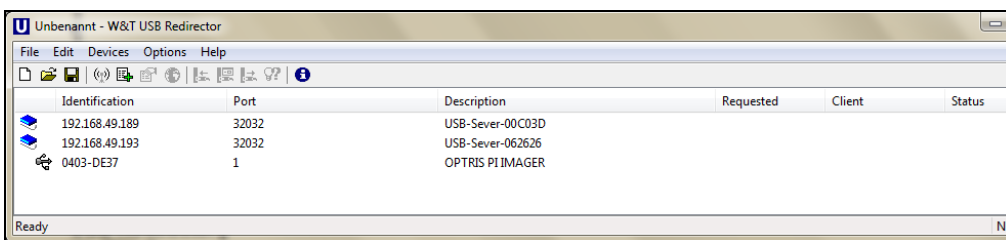
Software

Install the software programs from the Software-CD (folder: **USB-Server**):

- **USB Redirector**
- **WuTility**

Starting the USB redirection

Start the **USB Redirector**. The local network will be automatically scanned for available USB-Servers (if not, refresh the current view with **File/ New**).



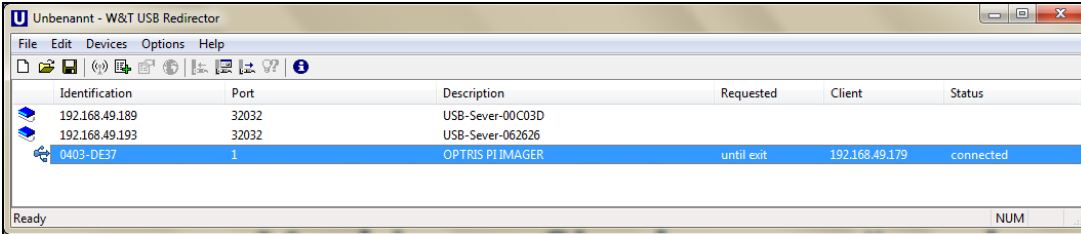
If several USB-Servers are in your network you can identify your own by the number you find in the overview of **Redirector** (under *Description*) as well as on the serial number label of your device (e.g.: USB-Server-**062626**).

USB Server Gigabit – Quick Start Guide

You see in the **Redirector** the connected USB device. Mark it and press the **Claim** button.



The status is changing now to **Connected**. You can see the IP address of your local PC under **Client**:



The device (IR camera PI, CTvideo or CSvideo) can now be used in the same way as it would be connected directly to a local USB port of your PC.

The program **Redirector** can be minimized – the redirection will be determined if you close the window.

Automated USB redirection

Open the **Redirector** and mark the connected device.
Then press **Claim, Advanced**:



Select **permanently**:



The USB redirection is now kept also if the program **Redirector** will be closed. If the PC and/ or the USB-Server are restarted, the redirection will be recovered automatically.

Stopping the USB redirection

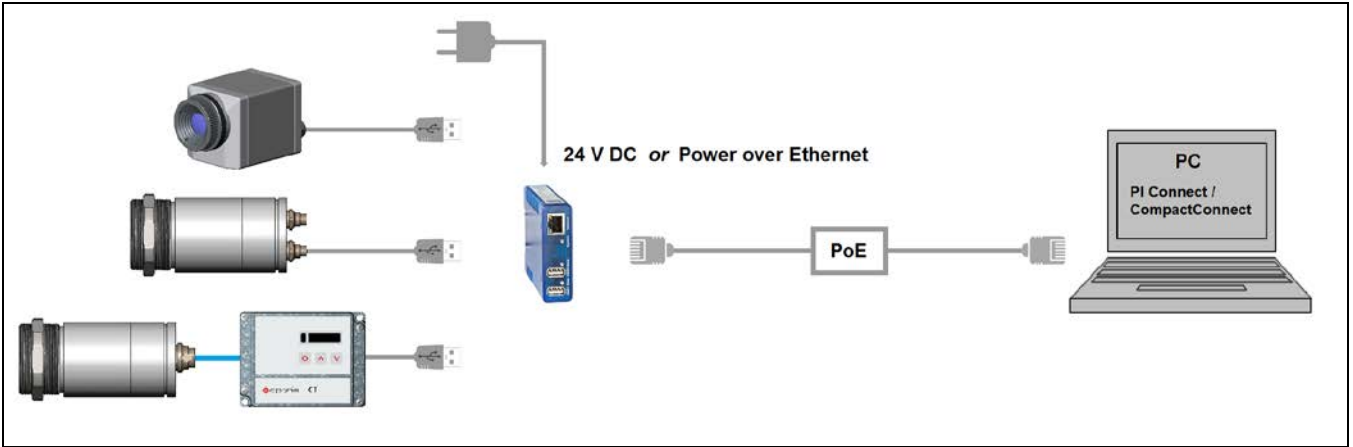
To stop the permanent USB redirection, start the **Redirector** and press the **Release** button:



USB Server Gigabit – Quick Start Guide

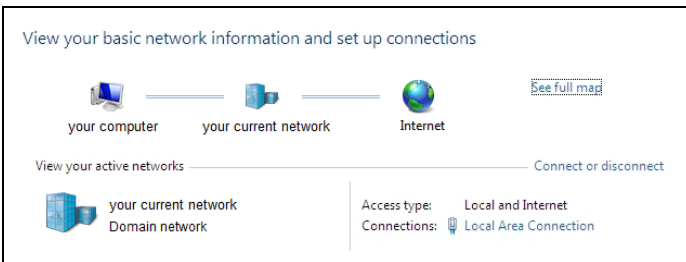
2. Direct Connection (Point-to-Point-Network)

Installation



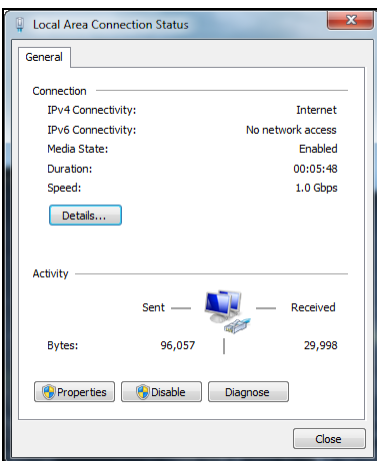
On a direct connection to a PC both, the USB-Server as well as the PC must use a fixed IP address. No DHCP server is available here. Accomplish the following settings on your PC once (depending on the operating system the procedure can differ from the here shown – the following description refers to a Windows 7 system).

1. Go to **System controls**; open **Network and Sharing Center**.

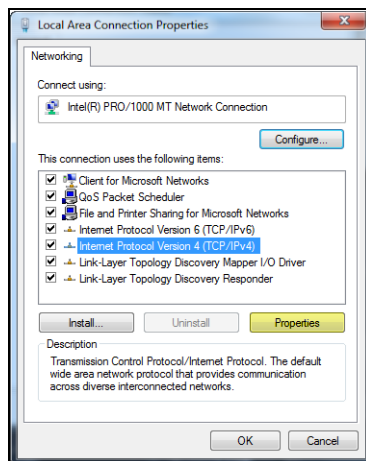


2. Enter **Local Area Connection** – status screen [1] is shown and subsequently **Properties**.

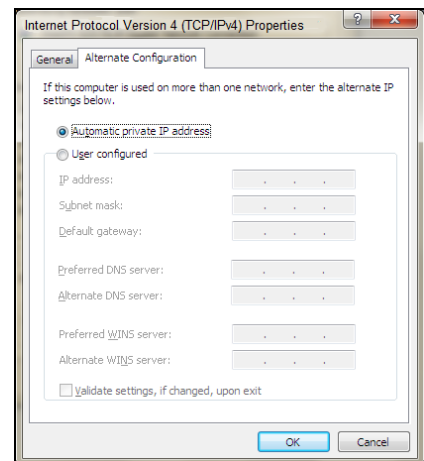
3. Mark **Internet protocol version 4 (TCP/IPv4)** [2] and go to **Properties** again.



[1]



[2]

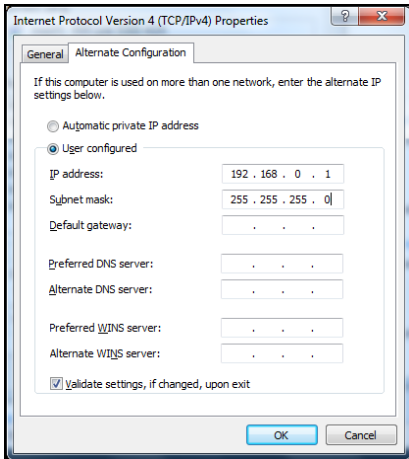


[3]

4. Open register **Alternate Configuration** in window [3] and enable the checkbox **User configured**.

5. Now enter a user defined IP address for your PC, for example **192.168.0.1**.

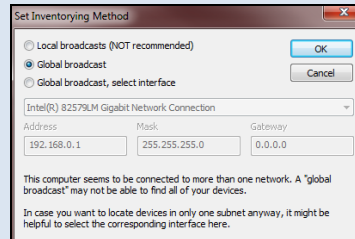
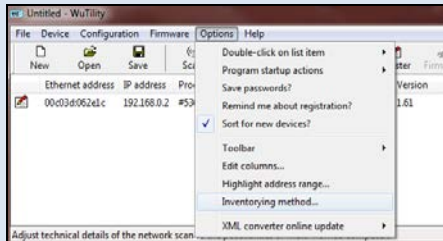
USB Server Gigabit – Quick Start Guide



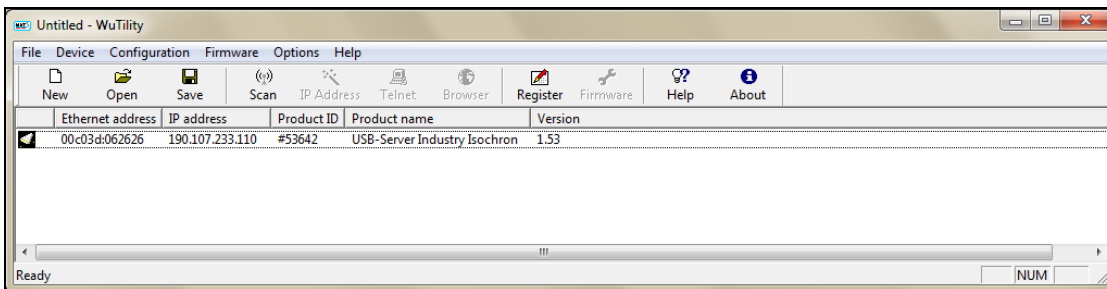
6. To change the network settings of the USB-Server start the **WuTility** program:



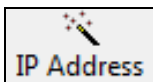
If there is any problem in the **WuTility** software with the detection of connected USB Server, check the following setting:



1. Go to **Options/Inventorying method** and choose **Global broadcast**.

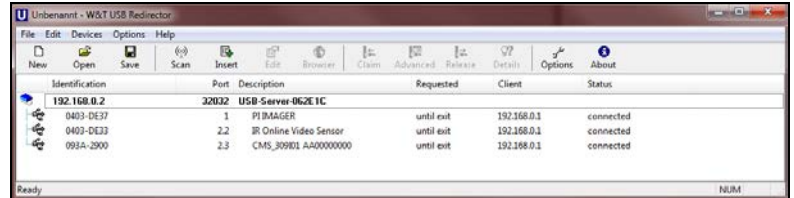
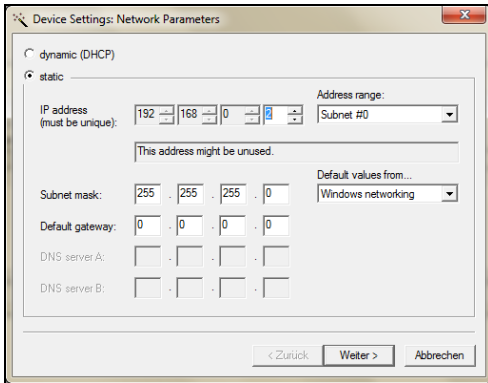


Independent on the current network settings of the USB-Server the device is displayed now. Mark the USB-Server and then press **IP Address**:



7. The standard setting of the USB-Server is DHCP. On a direct connection to a PC set a static IP address to the device. Take care that the network part of the address is identical to the network part of the IP address of the connected PC (therefore: **192.168.0**):

USB Server Gigabit – Quick Start Guide



8. Now press **Next** and then **Finish**. The network connection between PC and USB-Server will be established and you can perform the USB redirection as described previously. Close the **WuTility** software.

Scope of Supply

- USB Server Gigabit
- 24 V power supply
- Ethernet cable, 1m
- Quick Start Guide