

Pneumatically Actuated Lug Style Butterfly Valve Type 244



General

The Type 244 series pneumatically actuated lug style butterfly valve from Georg Fischer is the ultimate choice for the high demands of the industrial world. The unique double eccentric design means the disc is not in contact with the seal when the valve is being operated. The result is less component wear and decreased required operating torques when compared to traditional boot-style designs. Better chemical compatibility is achieved because the inner body is the same material as the pipe. The unique Q ring design insures a superior seal with virtually any type of flange without the need for additional gaskets. Additionally, the electro-pneumatic positioner, stroke limiter, and feed back switches give flexibility for integration into a wide variety of applications.

Features

- Size: 2"–12"
- Outer body: Glass-filled PP with overmolded SS316 lugs
- Body materials: PVC, CPVC, PP and PVDF
- Stem: 316 stainless steel
- Seal: EPDM or FPM; PTFE seals available upon request
- Movement: Fail open, fail closed, and double acting
- Mechanical: Namur compliant air connection and mounting console for accessories such as positioner and feedback switches
- Visual position indicator
- Stroke limiter

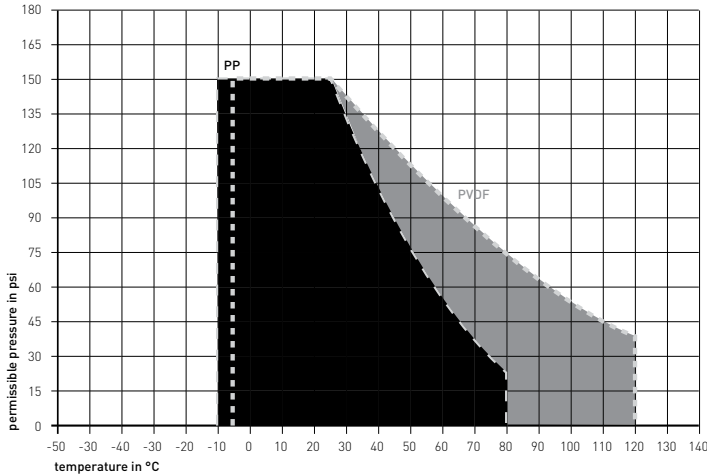
Optional Features

- Solenoid air control valve
- Limit switches
- Declutchable manual override
- Electro-pneumatic positioner

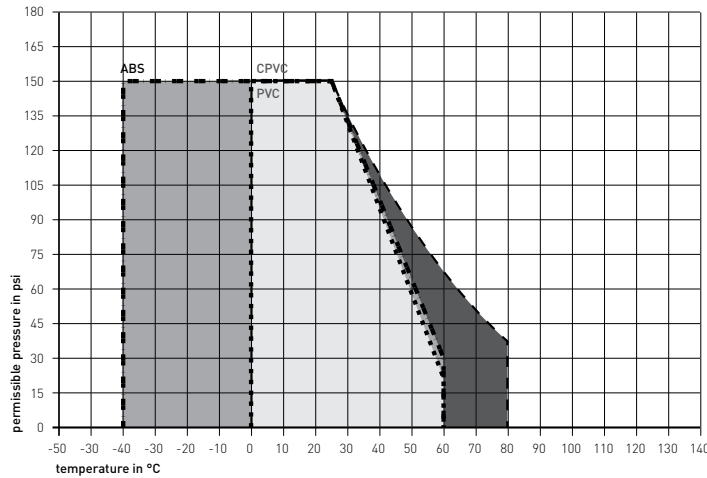
Technical Data

Pressure-temperature diagrams

PP, PVDF (useful life 25 years; medium water)



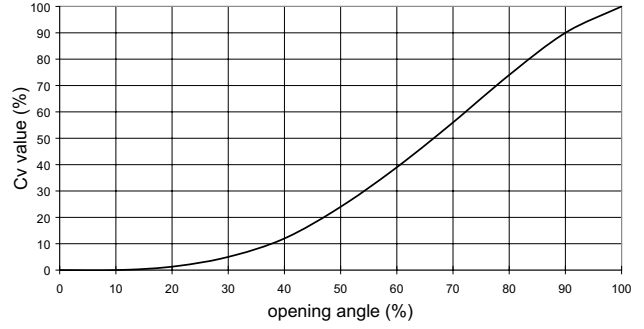
ABS, PVC, CPVC (useful life 25 years; medium water)



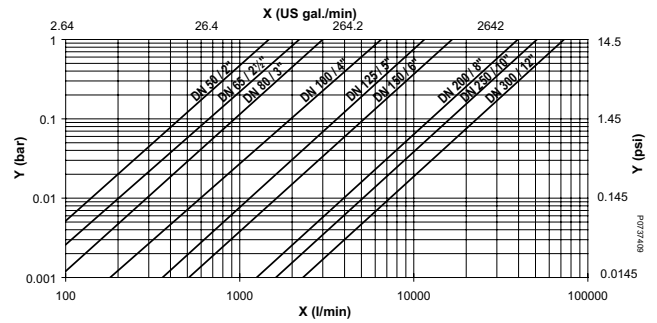
Cv values

DN mm	Inch	d mm	Cv 100 gal/min ($\Delta p = 1$ psi)
50	2	63	103
65	2½	75	154
80	3	90	210
100	4	110	455
125	5	140	805
150	6	160	1162
200	8	225	2772
250	10	280	3570
300	12	315	5110

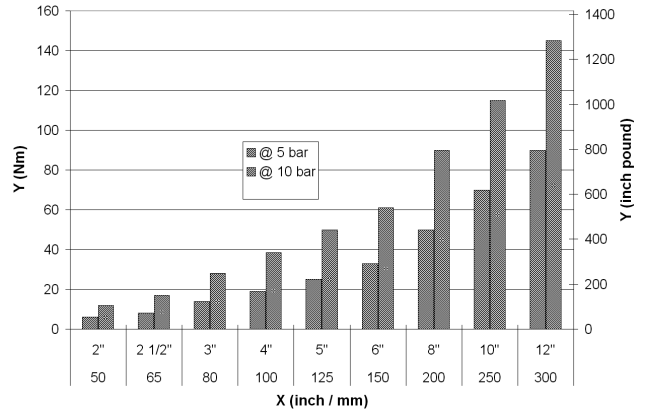
Flow characteristics



Pressure loss



Operating torque



For non-GF actuators, breakaway torques 2.5 to 4 times the value of the moving torque must be taken into consideration, depending on the application conditions (e.g. control time, medium, temperature, etc.).

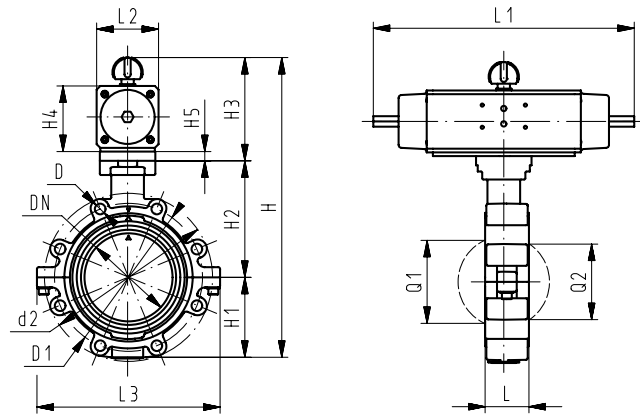
Technical specifications

PA 30-70	
Control medium	neutral, non aggressive gases (max. 104°F)
Operating pressure	40–100 psi (Depending on valve size and line pressure)
Max. allowable operating pressure	100 psi
Air connection	1/8" BSP (2"–8" FC/FO) 1/4" BSP (10" and 12" FC/FO) 1/8" BSP (2"–12" DA) NPT adapter included with assembled valves Namur compliant
Actuation time	1–4 seconds
Actuation angle	90°F
Mode of operation	<ul style="list-style-type: none"> • Fail-safe close (FC) • Fail-safe open (FO) • Double acting (DA)
Operating temperature	14°F–176°F
Permissible humidity	0–95%
Position indicator	visual
Housing material	aluminium hard anodized

Actuator size

	2	2½	3	4	5	6	8	10	12
Fail-safe close (FC)	PA 30	PA 30	PA 35	PA 40	PA 45	PA50	PA55	PA65	PA70
Fail-safe open (FO)	PA 30	PA 30	PA 35	PA 40	PA 45	PA50	PA55	PA65	PA70
Double acting (DA)	PA 35	PA 35	PA 40	PA 45	PA 45	PA55	PA55	PA65	PA70

Dimensions



Type 244 pneumatically actuated

d [inch]	DN [mm]	d2 [mm]	D	D1 [mm]	H [mm]	H1 [mm]	H2 [mm]	H3 [mm]	H4 [mm]	H5 [mm]	L [mm]	L1 [mm]	L2 [mm]	L3 [mm]	Q1 [mm]	Q2 [mm]
2	50	160	UNC 5/8	120.6	328	77	134	117	70	15	45	276	65	165	40	-
2½	65	180	UNC 5/8	139.7	340	83	140	117	70	15	46	276	65	182	54	35
3	80	195	UNC 5/8	152.4	361	89	146	126	78	15	49	326	72	210	67	50
4	100	226	UNC 5/8	190.5	402	106	167	129	86	-	56	370	80	240	88	74
5	125	258	UNC 3/4	215.9	441	121	181	139	96	-	64	411	90	272	113	97
6	150	284	UNC 3/4	241.3	471	133	189	149	106	-	72	423	100	300	139	123
8	200	341	UNC 3/4	298.4	530	159	210	161	118	-	73	452	112	360	178	169
10	250	412	UNC 7/8	362.0	660	205	264	191	148	-	113	648	137	440	210	207
12	300	482	UNC 7/8	431.8	715	234	285	196	157	-	113	663	145	510	256	253

GF Piping Systems

Tel. (714) 731-8800, Toll Free (800) 854-4090, Fax (714) 731-6201

us.ps@georgfischer.com, www.gfpiping.com

