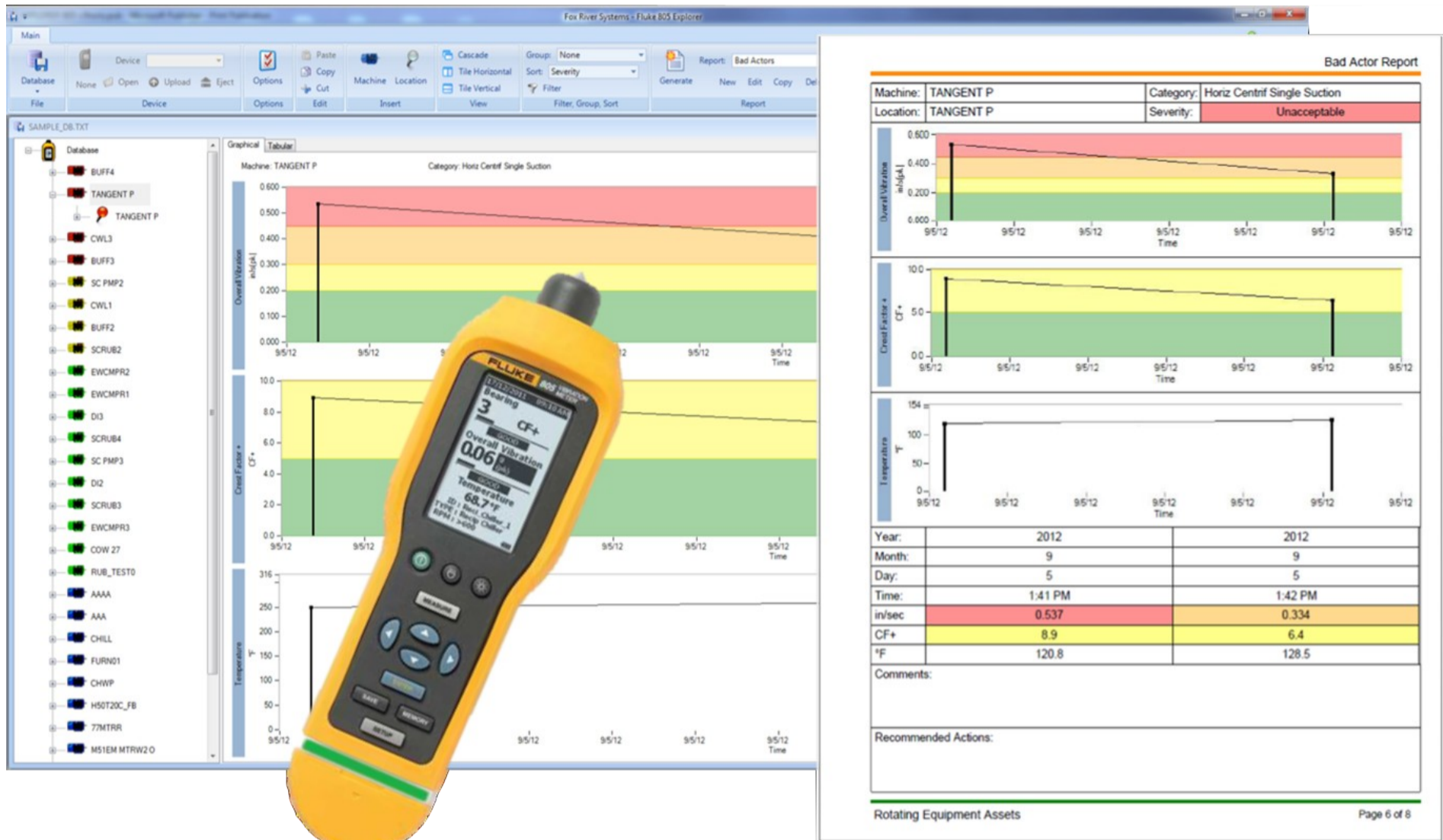


# Explorer 805 Professional Edition Software

## Unlock the Potential of Fluke 805 & 805FC Vibration Meters



Explorer 805 software from Fox River Systems enables Fluke 805 Vibration Meters to be used in support of small to large scale vibration screening programs for rotating equipment assets. Explorer 805 was created to address capabilities required by in-house maintenance personnel and service provider organizations with hundreds to thousands of assets under management across one or more sites. The software is offered in a Professional Edition, Standard Edition, and Starter Kit Edition allowing investment in software capabilities to match your needs.



Explorer 805 unlocks the potential of the Fluke Vibration Meters by enabling:

### Rapid Configuration of Fluke 805 Vibration Meters

Explorer 805 feature a Setups Editor which eliminates the need for manual entry of machine names, measurement locations, and machine types into Fluke 805 Vibration Meters. The Setups Editor incorporates time saving features like copy and paste to accelerate creation of setups for all of your equipment. Explorer 805 can be used to reload a Fluke Vibration Meter that experiences memory loss.

***Improve Uptime & Reliability  
Without Being a Vibration Testing  
Professional***

### Measurement and Trend Reporting

Explorer 805 Professional Edition includes the ability to generate reports that are actionable, easy to understand, and focused on the assets that meet your custom filtering criteria. Standard reports are included with the software to serve as a starting point for customization of reports to meet your needs. For example, a standard "Bad Actors" report includes only those machines that exhibit overall vibration levels or Crest Factor+ ratings that are SEVERE or EXTREME. Reports can be tailored to include trend graphs or measurement data tables and customized report titles and logos. The machine assets that appear in a report can be tailored using a custom filter that specifies which machine types and severity levels are to be included. The sequence that machine assets appear in a report is controlled by a sort order specification with the following options: Severity (most severe to least sever), Machine Name (alphabetical), Machine Category (numeric machine categories as specified by Fluke), or by Route Sequence (default route sequence is the order machines were added to the database).

**Measurement Routes**, along with the database capabilities of the Professional Edition, enable scaling your vibration testing program across multiple sites and a virtually unlimited number of machine assets. Databases and routes are used to segregate and help you manage groups of equipment when you have multiple sites, multiple customers, or large number of equipment assets in the scope of your vibration screening program. Measurement routes represent an ordered list of machine assets that a technician can be assigned to make measurements on.

**Data Protection: Backup & Recovery** of Setup files is possible with Explorer 805. And backup and recovery of measurement history is only possible with the database functionality that is built into the Professional Edition. In the Professional Edition, the memory of the Fluke 805 or 805FC meter only stores a measurement route (collection of assets to make measurements on) and the most recent measurements made on assets in the route. Once the Fluke Vibration Meter is attached to a PC running Explorer 805 Professional Edition, measurement data is copied from the meter and added to a database which contains the measurement history.

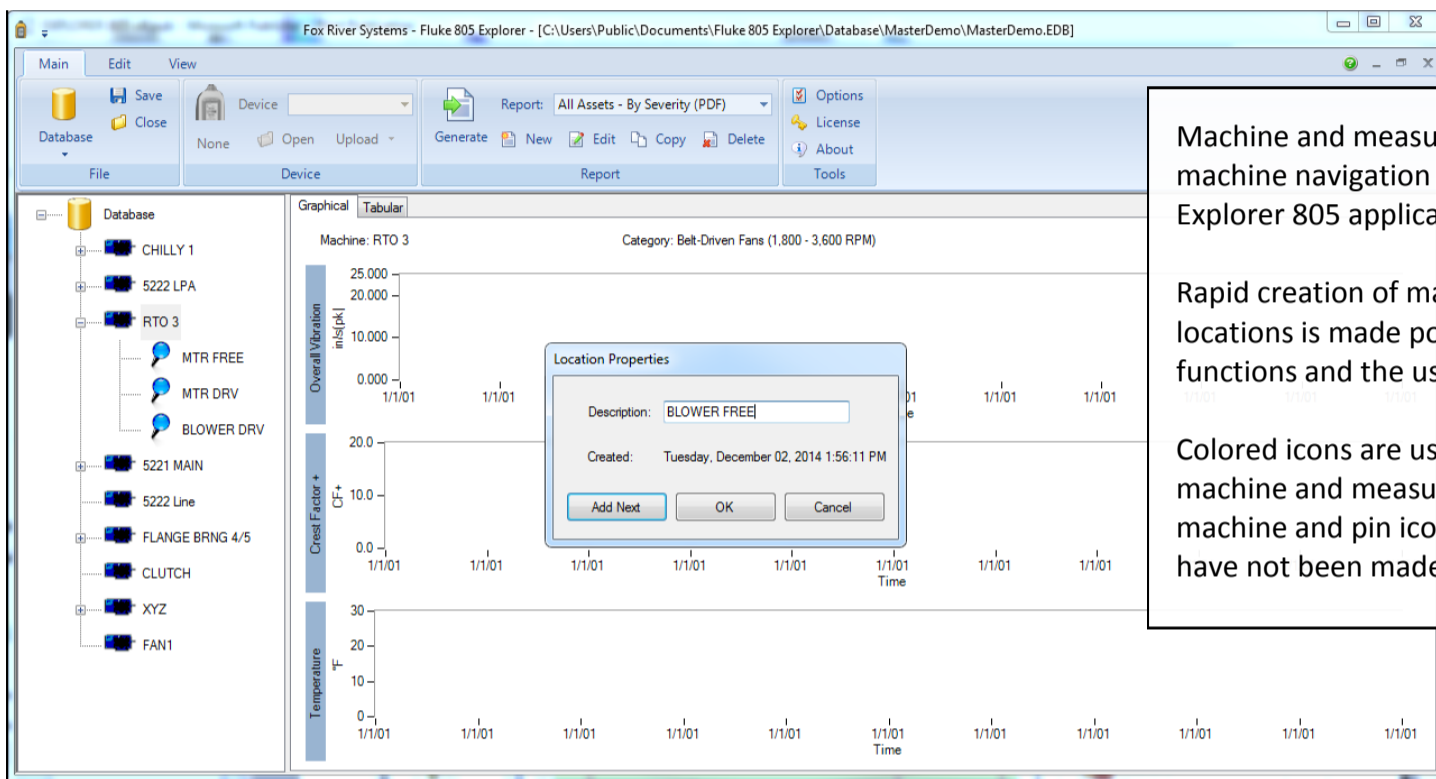
## Produce Actionable Results With Ease!

Fox River Systems designed Explorer 805 with an intense focus on the user experience. Our design objective was to create an application that presents asset condition information in an actionable and easy to understand format. We sought to make the application straight forward to use and requiring minimal training to access all of the capabilities of

**Produce Actionable Results  
Without Being a Vibration Testing  
Professional**

## Create Fluke 805 and 805FC Setup & Route/Database Files on Your PC

One of the first steps associated with starting up a vibration screening program using a Fluke Vibration Meter involves entering information about each the equipment assets that measurements will be taken on: Equipment name, each measurement location on the equipment, the type of equipment (equipment category), and running speed of the machine. Save time and minimize error prone manual data entry into a Fluke 805 meter by using Explorer 805 with your PC keyboard. Add, modify, or delete machine assets and measurement locations into a setup file that can be uploaded to a Fluke meter to configure it to make measurements. With Explorer 805 Professional Edition, the same tools used to create a setup file are employed to create measurement routes and database entries.



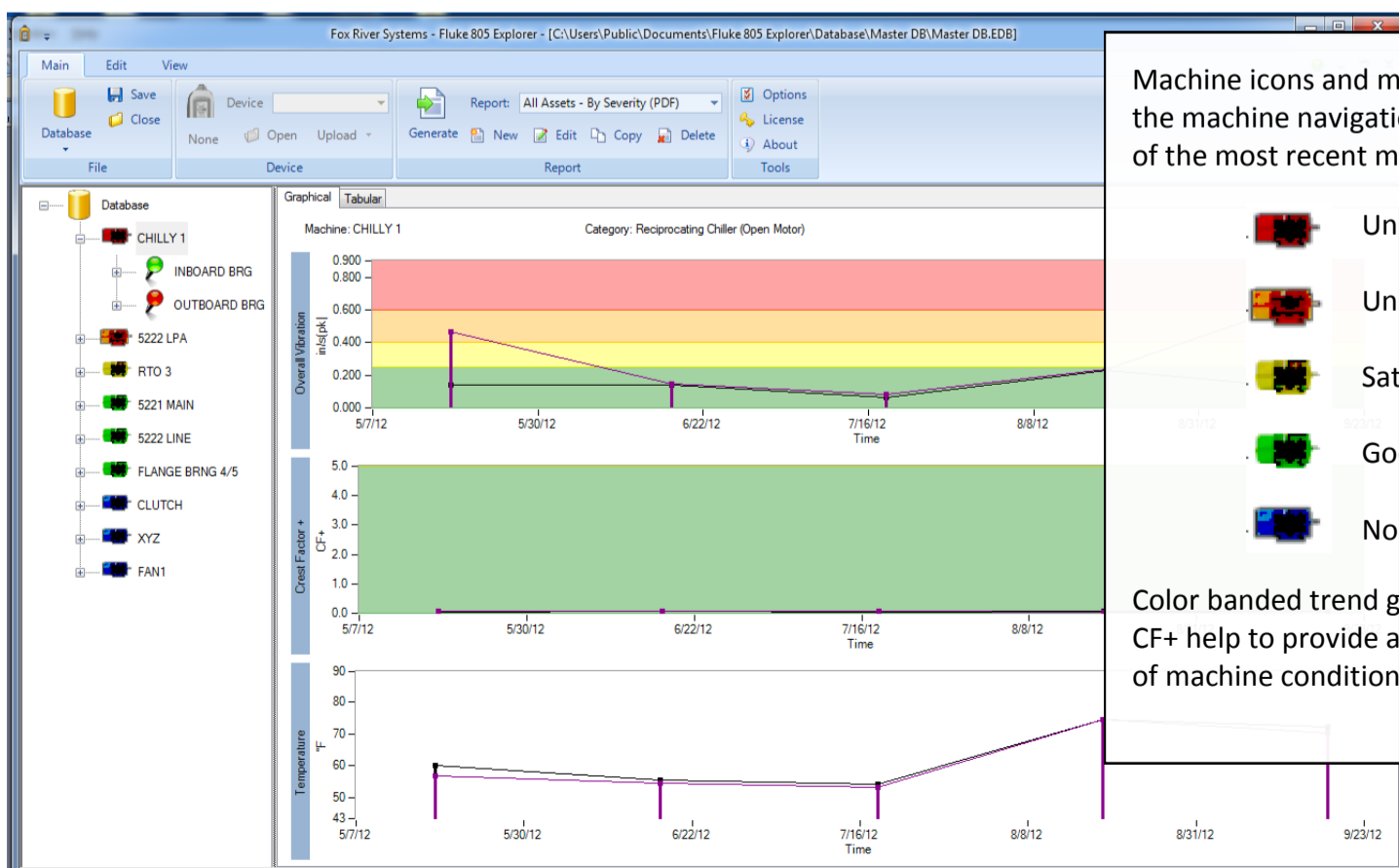
Machine and measurement locations appear in the machine navigation pane on the left most side of the Explorer 805 application.

Rapid creation of machine and measurement locations is made possible with copy and paste functions and the use of your PC keyboard.






Colored icons are used to represent condition of each machine and measurement location. Blue colored machine and pin icons indicate that measurements have not been made.

## Gain Insight on Current and Historical Machine Condition with Measurement Trend Graphs

With Explorer 805 Professional Editions, measurement data from the Fluke 805 vibration meter is plotted and graded including: Overall Vibration, Crest Factor+ (bearing condition), and Temperature. Graphs from one or all measurement locations can be displayed.



Machine icons and measurement location pin icons in the machine navigation pane communicate the severity of the most recent measurements using color coding:

-  Unacceptable
-  Unsatisfactory
-  Satisfactory
-  Good
-  No Measurement Data Available

Color banded trend graphs for Overall Vibration and CF+ help to provide a immediate sense of the severity of machine condition measurements over time.

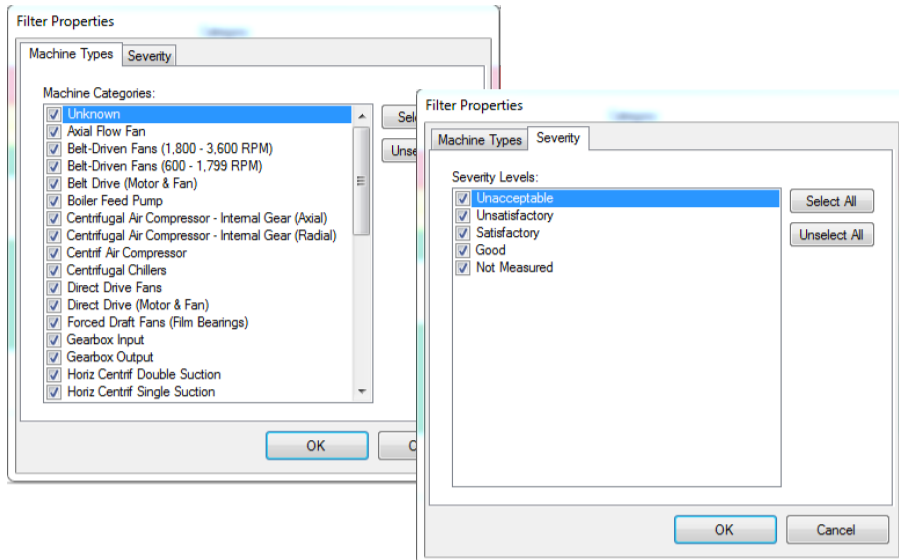
## Find Needles in the Proverbial Haystack

### Inspire Action Through Control of Information Presentation Using Filtering, Grouping, and Sorting

Explorer 805 supports the use of Filters, Grouping Options, and Sort

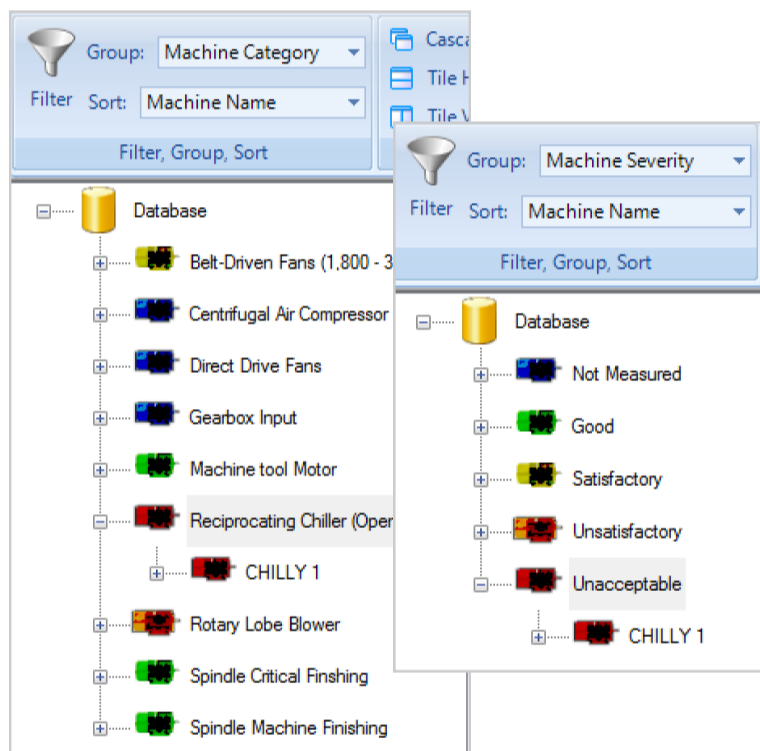
Order to help you find answers to your pressing questions such as: Which machines are your “bad actors”? Which categories of machines types are problematic? Which machines in your vibration screening program haven’t been measured yet?

#### FILTERING



The filtering tool provides a straight forward means of narrowing the focus of an investigation into machine performance. With filtering, you can limit the machines that are presented in the machine navigation pane to those that match your criteria for the Machine Category (type of machine) and Severity Levels of the most recent measurements made.

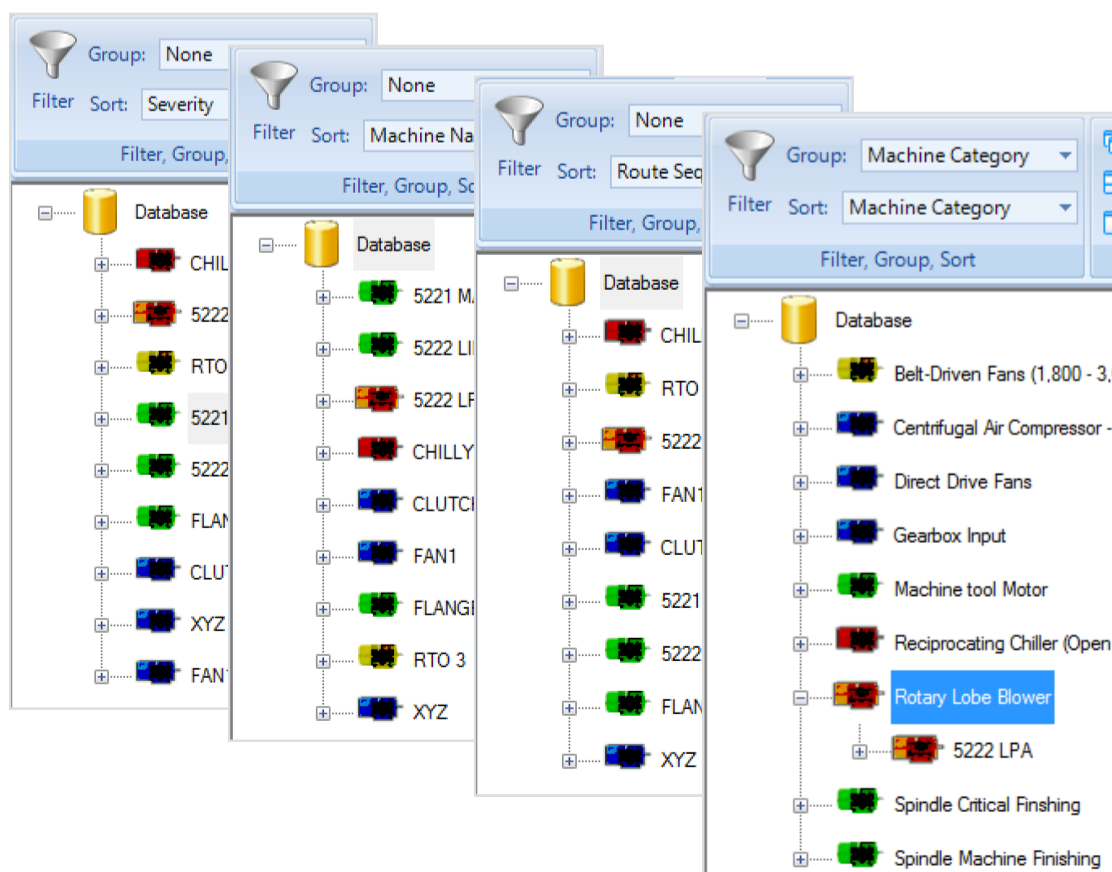
#### GROUPING



The Group tool complements the filtering tool by offering an additional method for managing the presentation of machine assets in the machine navigation pane. Equipment assets that are of the same Machine Category or machines that have the same Severity level for the most recent vibration measurements can be grouped together. Notice at left how the group tool setting impacts how asset CHILLY 1 is presented.

When grouping by Machine Category, the color of machine category icon tells you the highest severity level measured among all machines of the category.

#### SORTING



There are 4 ways that machine assets can be sorted in the machine navigation pane:

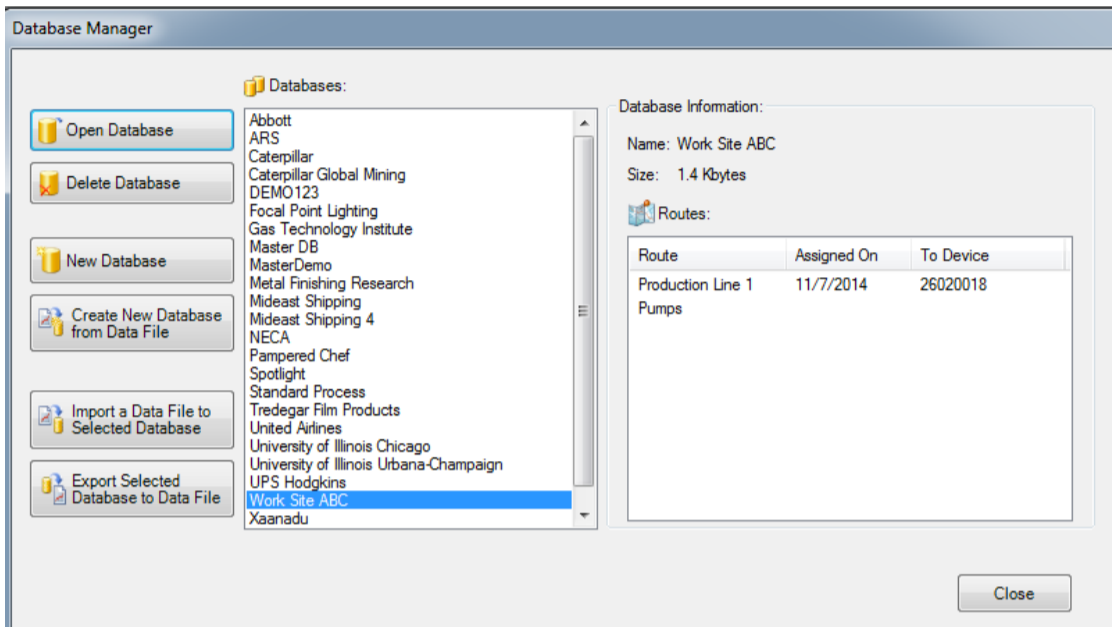
- 1) Severity—useful for finding machines with specific severity levels or where no measurements have been made
- 2) Machine Name —useful when having an alphabetized machine list helps you quickly find the asset you want.
- 3) Route Sequence— this matches the order that machines are listed in your Fluke 805.
- 4) Machine Category—perhaps most useful when combined with grouping by Machine Category for identifying differences in measurement severity across machines of the same type.

Explorer 805 Professional Edition was developed to extend the capabilities and practical use model of Fluke 805 Vibration Meters to programs of nearly unlimited scale through support of PC/network based databases and the ability to assign measurement routes to each of your Fluke 805 meters. These features are basis for supporting vibration condition monitoring programs that span multiple sites, thousands of equipment assets, and one or more technicians each with a Fluke 805 Vibration Meter.

## **Scale Your Vibration Testing Program to Multiple Sites and Thousands of Assets**

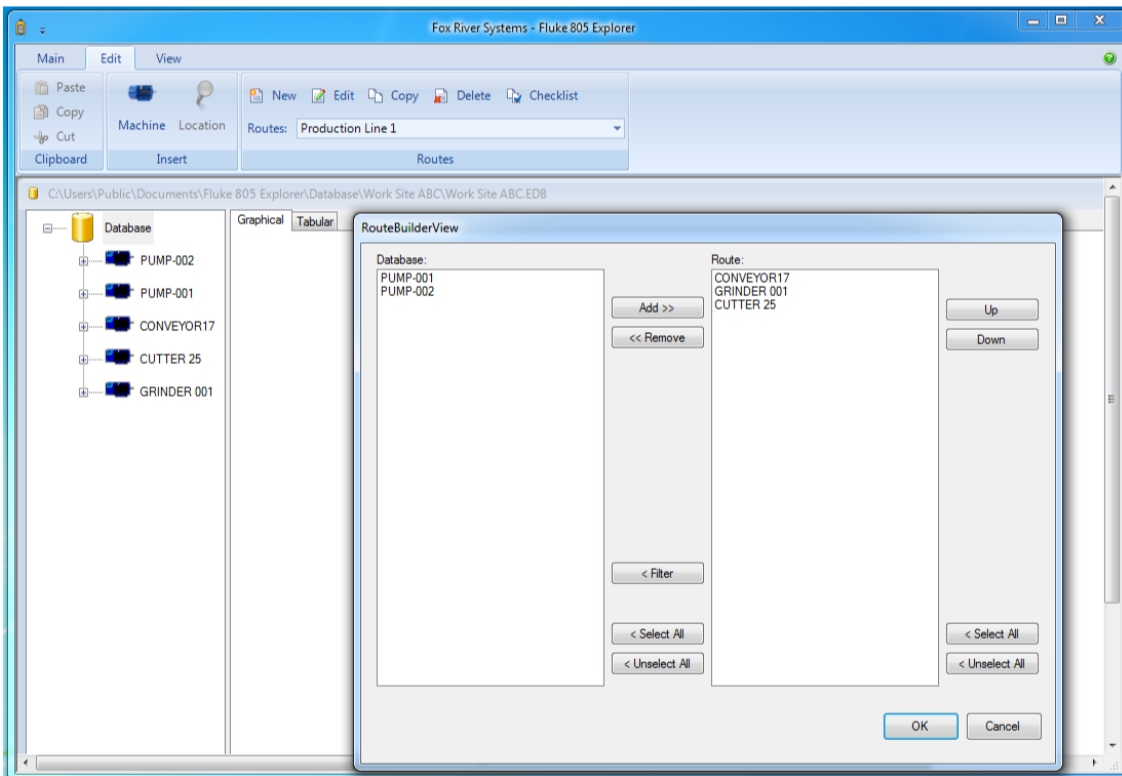
Each database represents a collection of machine assets which you use to segregate and organize assets that are located, for example, at different work sites or companies. Measurement routes represent a subset of those machine assets that make logical sense to assign to a technician. Measurement routes can be assigned to a specific Fluke 805 serial number to help with tracking assignments made to each technician.

### **DATABASES**



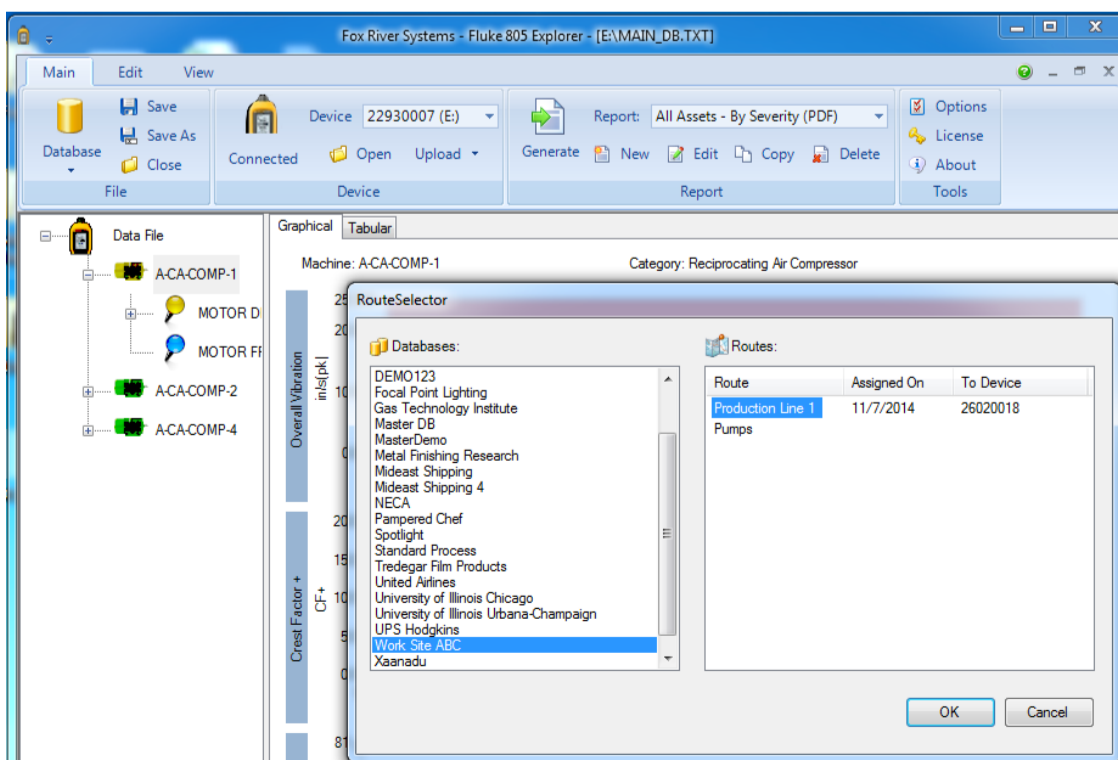
Databases offer a simple method of organizing measurements and machine assets located at one or more. If Measurement Routes have been created for a selected database, they are listed along with information to help you track work assignments.

### **ROUTES**



A Measurement Route represents a collection of equipment assets that a technician will be assigned to make vibration measurements on. Routes are often set to include machines assets that are:

- part of the same process or production line OR
- related by criticality or frequency you plan to make measurements OR
- Organized using some principle that makes sense to you.



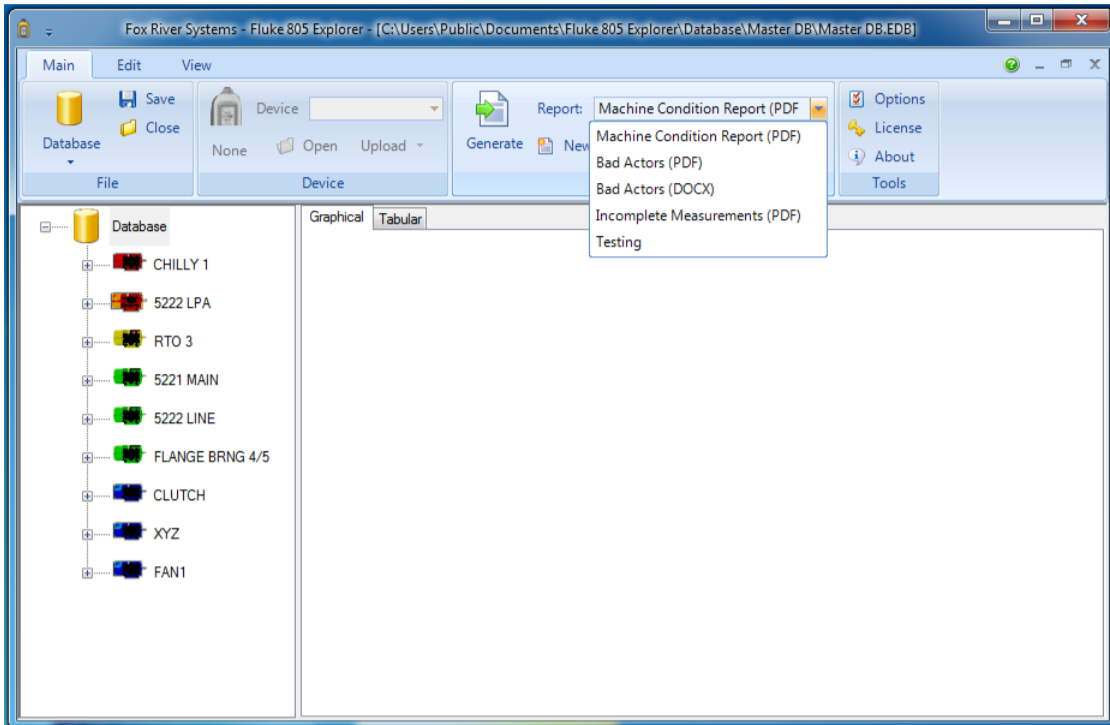
Upload a measurement route to a Fluke Vibration Meter using Explorer 805. Routes get loaded onto the meter using a USB cable. After uploading a route, the Fluke 805 meter is disconnected and begins an configures itself to make measurements. 805FC meters are instantly ready to go!



## Reports Communicate Where Action Needs to be Taken

The purpose of periodically collecting vibration measurements on equipment assets is to monitor for the declining health of machines so that corrective action can take place prior to catastrophic breakdown. Explorer 805 employs trend graphs and reports with a host of options to optimize the presentation of the information you need to make fact-based maintenance decisions.

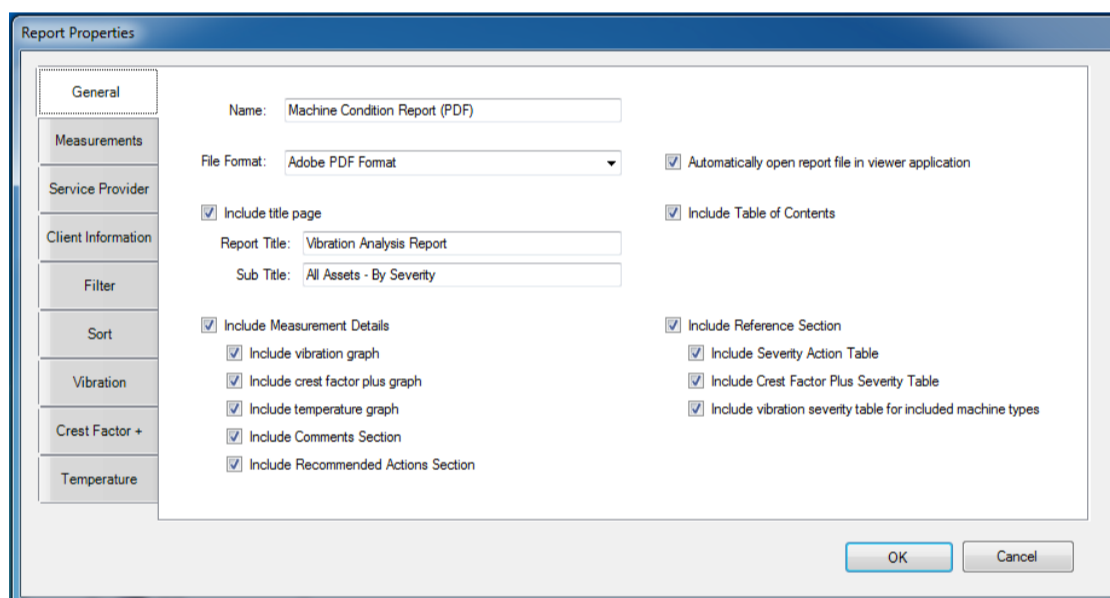
## Standard & Customized Reports Help Communicate Problems and Direct Actions



Reports are crucial to communicating about machine health and guiding maintenance actions, so report creation and customization are a key capabilities built into Explorer 805 Professional Edition. Standard Reports include:

- Machine Condition Report — depicts the condition of every machine
- Bad Actors Report — highlighting machine assets with the worst severity levels
- Incomplete Measurements Report—listing machines that have no vibration measurements made on them

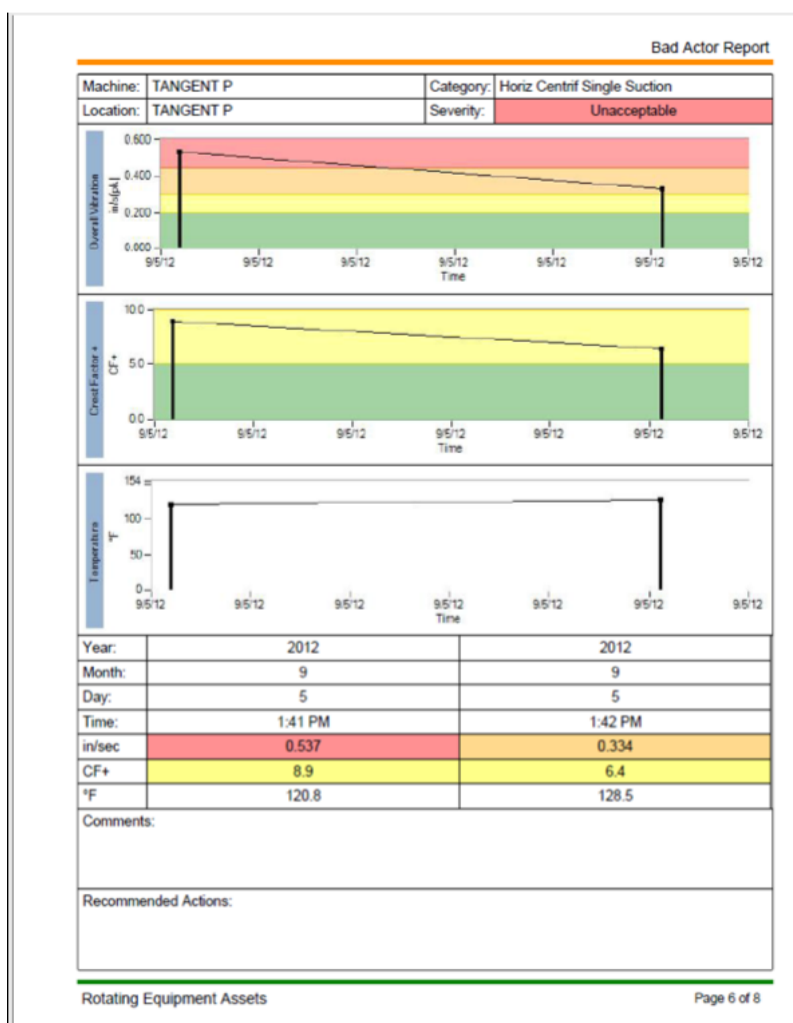
Standard Reports can be copied and modified to meet specific requirements



Report Properties can be edited to change the contents as well as look and feel of your report.

“Less is more” is a saying that oftentimes applies to reports that otherwise confuse the recipient because of too much irrelevant information being included. With Explorer 805, you can tailor reports to ensure that the critical information you need to communicate is there...and nothing more.

A report that you need to create regularly can be saved as a standard report and generated with a click of your mouse.



The standard reports included with Explorer 805 contain information similar to what is presented in the on-screen trend graphs and include areas to add your Comments and Recommended Actions.

Reports can be generated in any of 3 formats:

- Microsoft Word (.DOCX)
- Microsoft XPS (.XPS)
- Adobe PDF (.PDF)

## Get the Software, Support, and Training Needed for Your Success

Not all companies have the same needs, so Fox River Systems provides Explorer 805 software, training and support options to fit your requirements. Contact us to discuss your requirements.

**Products and Services Aligned with Your Needs and Budget from a Leader in Uptime & Reliability**

## Software Edition Selection Tool—Capabilities Matrix

Use the software capabilities matrix below to help select the proper edition of Explorer 805 software you need.

	Professional Edition	Notes
<b>Productivity Features</b>		
Ability to create/edit Setup files on your PC and upload to a Fluke 805 meter	YES	This feature helps expedite setup of your Fluke 805 to be ready to make measurements by eliminating manual entry of machine names and measurement locations.
Ability to view measurement data in trend graphs or tabular data	YES	This feature provides visibility to trend graphs made using measurement data stored in the Fluke 805 meter or measurement data located in a Data File on your PC [Standard Edition or Professional Edition only]. Viewing measurement data in a Database can only be performed with the Professional Edition.
Ability to create and edit Databases as centralized repositories of measurement data for a collection of machines	YES	This feature enables you to control the logical segmentation of assets and measurement data as you prefer e.g. by site, building, client, or other asset collection.
Ability to create/edit machine measurement routes and assign them to one or more Fluke 805 meters	YES	
<b>Data Protection Features</b>		
Ability to backup and reload a Fluke 805 machine names and measurement locations (but no measurement data)	YES	Eliminates manual entry of machine names and measurement locations on a Fluke 805 meter
Ability to save measurement data from a Fluke 805 to a data file on a PC	YES	While measurement data may be saved as a file on a PC, it is not possible to ever load a Fluke 805 meter with measurement data.
Protection and recoverability of Machine/ Location Data Files as well as measurement data (backup & restore ability)	YES	With the Professional Edition, the location of database and measurement data is on your PC or a network. With the Starter Kit and Standard Editions, the database and measurement data is retained on the Fluke 805 meter only.

## Training & Support

Training, support, and consultation are all available as a combination of free and fee based offerings from Fox River Systems.

	Professional Edition	Notes
<b>Training &amp; Start-Up Assistance</b>		
Online Operational Readiness Training	FREE	Web based training to acquaint new users with the functionality of Explorer 805
Onsite Operational Readiness Training on Fluke 805 and Explorer 805 operation	REQUEST QUOTE	Fox River Systems provides guidance to organizations putting machine condition health programs in place with emphasis on how to apply Explorer 805 to maximum benefit. Key topics include determining which equipment assets to include in the program, frequency of measurements, how to organize assets into databases and routes, integrating the use of Explorer 805 with existing work order management systems, and assistance with custom reporting requirements.
Vibration Screening Program Start-Up Assistance	REQUEST QUOTE	
<b>Technical Support</b>		
1 Year Unlimited Email Support for bug fixes and “how to” questions	FREE	
Enhancement Requests	REQUEST QUOTE	

**For more information, contact Fox River Systems: [info@FoxRiverSystems.com](mailto:info@FoxRiverSystems.com) USA (630) 365-4030**