

USER GUIDE

EE576 - Very Low Air Velocity Probe

CAUTION

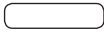


- Accurate measurement results are conditioned by the correct positioning of the sensing probe in the air stream.
- Best accuracy is achieved in laminar flow.
- Avoid mechanical stress onto the probe and mainly onto the sensing head.
- Observe the humidity working range 10...95% RH, non-condensing.
- Avoid installation in corrosive environment, as this may lead to sensor destruction.

SCOPE OF SUPPLY

- EE576 according to ordering guide
- Mounting flange
- User Guide

WIRING

Cable PVC 3 x 0,25mm² with cable end sleeves.

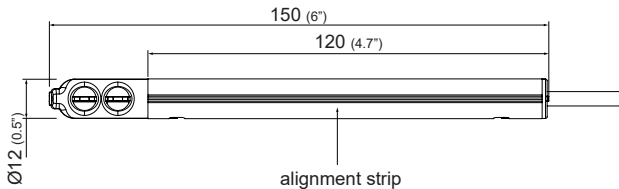
1		white	V+
2		brown	GND
3		green	output signal

PLEASE NOTE:

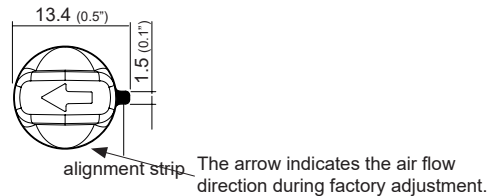
The EE576 is not reverse voltage- and short-circuit proof.

DIMENSIONS IN MM (INCH)

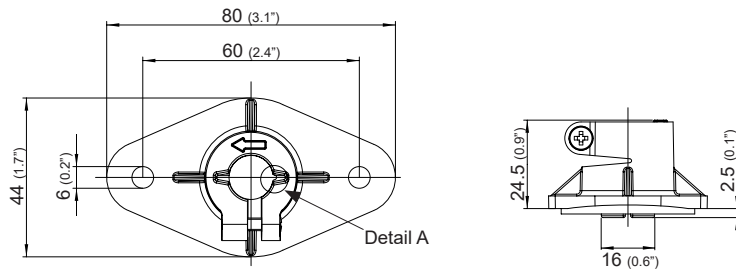
Probe:



Front sensor head:



Mounting Flange:



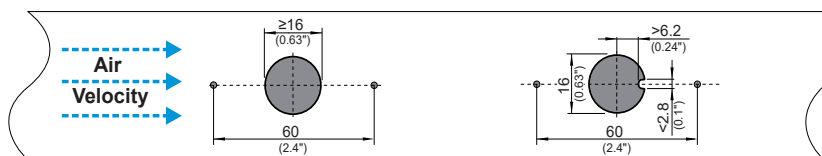
Detail A:



Bore hole for mounting:

drilling in the wall of the duct:

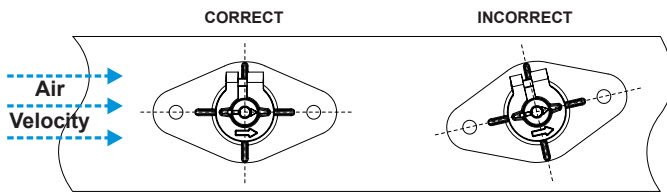
optional (laser cutting):
hole in the wall of the duct:



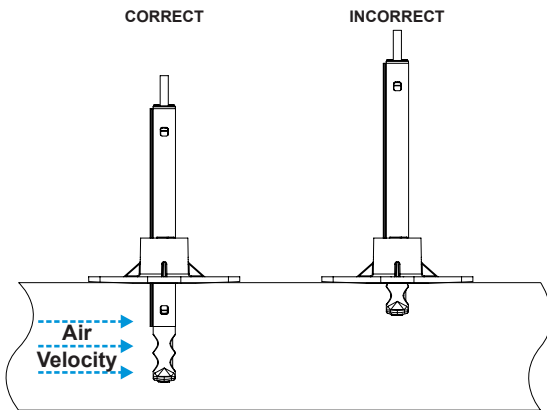
By leaving a key notch in the hole in the wall of the duct, the flange can be mounted in the correct direction of the air stream.

INSTALLATION

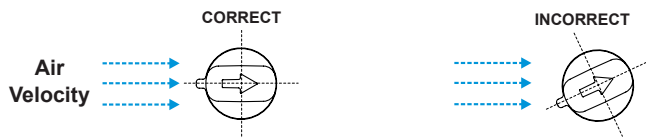
The alignment strip along the probe's tube and the matching mounting flange determine the orientation of the sensor probe. The arrow on the tip of the sensor probe and on the mounting flange marks the direction of the air stream. Install the mounting flange in such a way that the alignment is parallel to the air stream.



The mounting flange allows for an infinitely variation of the immersion depth of the sensor probe. Attention should be paid to that both sensor slots are in the air stream.



If the sensor probe is installed without a mounting flange make sure the air velocity sensor is aligned in parallel with the air stream.



USA FCC NOTICE:

This equipment has been tested and found to comply with the limits for a Class B digital device, pursuant to part 15 of the FCC Rules. These limits are designed to provide reasonable protection against harmful interference in a residential installation. This equipment generates, uses and can radiate radio frequency energy and, if not installed and used in accordance with the installation manual, may cause harmful interference to radio communications. However, there is no guarantee that interference will not occur in a particular installation. If this equipment does cause harmful interference to radio or television reception, which can be determined by turning the equipment off and on, the user is encouraged to try to correct the interference by one or more of the following measures:

- Reorient or relocate the receiving antenna.
- Increase the separation between the equipment and receiver.
- Connect the equipment into an outlet on a circuit different from that to which the receiver is connected.
- Consult the dealer or an experienced radio/TV technician for help.

CANADIAN ICES-003 ISSUE 5:

CAN ICES-3 B / NMB-3 B

INFORMATION

+43 7235 605 0 / info@epluse.com

Langwiesen 7 • A-4209 Engerwitzdorf
Tel: +43 7235 605-0 • Fax: +43 7235 605-8
info@epluse.com • www.epluse.com

LG Linz Fn 165761 t • UID-Nr. ATU44043101
Place of Jurisdiction: A-4020 Linz • DVR0962759

