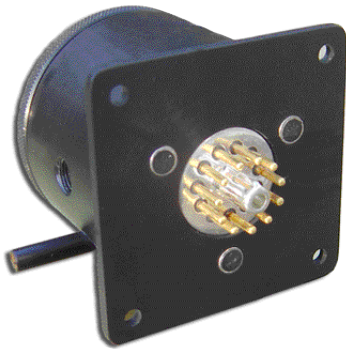


CHILLED MIRROR SENSOR SELECTION

EdgeTech's family of chilled mirror (optical dew point) sensors use a fundamental principle when measuring a dew point and have excellent accuracy, stability and repeatability characteristics. They are NIST traceable and each system can perform an Automatic Balance Control (ABC) function which nulls the contaminants without effecting the continuous operation. EdgeTech sensors are known as the preferred dew point transfer standard in calibration labs.

Model type		S1	S2	S2SC	S3	DS1	DS2
Com.Air	CA-C1	X	X	X	X		
DEWMASTER	DM-C1	X	X	X	X	X	X
DPM-99	DPM-99	X	X	X	X		
DPS	DPS	X	X				
VIGILANT	V-C1	X	X	X	X	X	X
1500-DC	1500-C1	X	X	X		X	X
1500-AC	1500-C2	X	X	X	X	X	X
Model type		A1	A3				
137 AIRCRAFT	137-C1	X	X				
Model type		D1	D2				
DEWTRAK	200-C1	X	X				
200M DEWTRAK	200M-C1	X	X				



S Series Sensor
Standard Chassis Mount
(Remote Mount Optional)

S Series Chilled Mirror Dew Point Sensors		
S-Type		Depression @25°C (77°F)
S1	Single-Stage Thermo Electric Cooler (TEC), flow through sensor	45°C (81°F)
S1P	High pressure (900PSIA) single stage (TEC), flow through sensor	45°C (81°F)
S2	Two-Stage (TEC), flow through sensor	65°C (117°F)
S2P	High Pressure (900PSIA) two stage (TEC), flow through sensor	65°C (117°F)
S2SC	Two-Stage (TEC), self cooling (fans), flow through sensor	65°C (117°F)
S3	Three-Stage (TEC), flow through sensor	95°C (171°F)

D Series Chilled Mirror Dew Point Sensors		
DS-Type		Depression @25°C (77°F)
DS1	Single-Stage (TEC), Insertion probe sensor includes a 10ft cable	45°C (81°F)
DS2	Two-Stage (TEC), Insertion probe sensor includes a 10ft cable	60°C (108°F)
D1	single stage probe sensor - 45degc depression	45°C (81°F)
D2	two stage probe sensor - 60degc depression	60°C (108°F)



D Series Sensor
Probe style

Specifications for S, D and A Series Sensors	
Dew Point/Frost Point Accuracy	±0.2°C (0.36°F) Standard, ±0.15°C (0.27°F) Optional
Sensitivity	>0.03°C (0.05°F)
Sample Flow	0.5 to 5.0 SCFH (0.25 to 2.5L/min)
Pressure Rating	Vacuum to 300 PSIA for S Series sensor, Vacuum to 50 PSIA for D Series sensor (using pressure fitting) (900 PSIA optional for S1 & S2 sensor)
Cooling Stages	Single-Stage (S1, D1, S1P & A1), Two-Stage (S2, D2, S2SC & S2P), Three-Stage (S3 & A3), of thermoelectric cooling
Dew Point Measurement Range	-75°C to 100°C (-103 to 212°F)
Mirror Material	Chrome plated
Operating Temperature	-25° to 105°C (-13 to 221°F)
Repeatability	± 0.05°C (0.9°F)
Functionality	Requires EdgeTech monitor to function